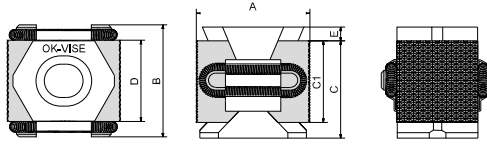


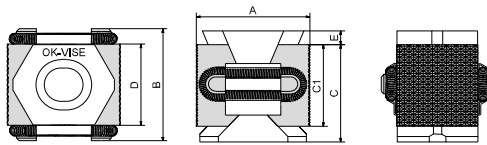
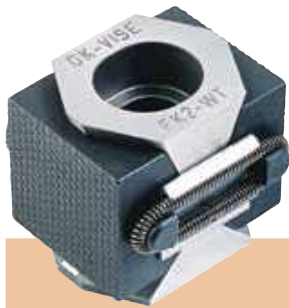
## DOUBLE-WEDGE PULL-DOWN, SERRATED



max 9 tons!

DK2-WTI measures given in inches and ounces.

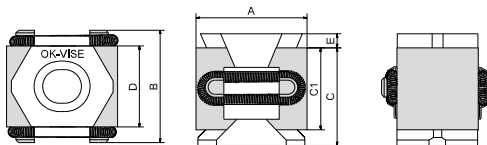
Type	A			B	C max	C1	D	E	Socket Head Screw DIN 912	Pressing force of Jaws, kN max	Tightening torque, Nm max	Weight in g (*oz) approx.	Hardness of jaws HRC
	min	optimum	max										
<b>DK2-WT</b>	42	46	49	41	36	30	30	5	M12x40	90	145	275	48-52
<b>DK2-WTI</b>	1.65	1.81	1.92	1.61	1.41	1.18	1.18	0.19	1/2-1 3/4	90	145	9.70*	48-52



max 15 tons!

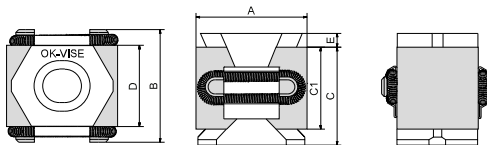
Type	A			B	C max	C1	D	E	Socket Head Screw DIN 912	Pressing force of Jaws, kN max	Tightening torque, Nm max	Weight in g (*oz) approx.	Hardness of jaws HRC
	min	optimum	max										
<b>FK2-WT</b>	58	61	66	56	50	42	52	5	M16x60	150	360	730	48-52

## DOUBLE-WEDGE PULL-DOWN, SMOOTH



DK2-WTI-S measures given in inches and ounces.

Type	A			B	C max	C1	D	E	Socket Head Screw DIN 912	Pressing force of Jaws, kN max	Tightening torque, Nm max	Weight in g (*oz) approx.	Hardness of jaws HRC
	min	optimum	max										
<b>DK2-WT-S</b>	41	45	48	41	36	30	30	5	M12x40	90	145	275	48-52
<b>DK2-WTI-S</b>	1.61	1.77	1.88	1.61	1.41	1.18	1.18	0.19	1/2-1 3/4	90	145	9.70*	48-52



Type	A			B	C max	C1	D	E	Socket Head Screw DIN 912	Pressing force of Jaws, kN max	Tightening torque, Nm max	Weight in g (*oz) approx.	Hardness of jaws HRC
	min	optimum	max										
<b>FK2-WT-S</b>	58	61	66	56	50	42	52	5	M16x60	150	360	730	48-52