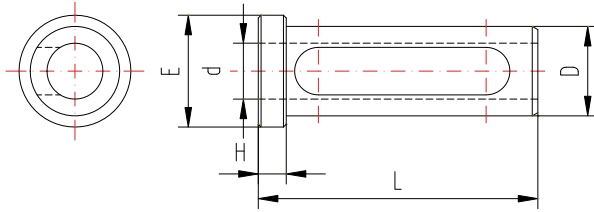


9.1 Bussole cilindriche

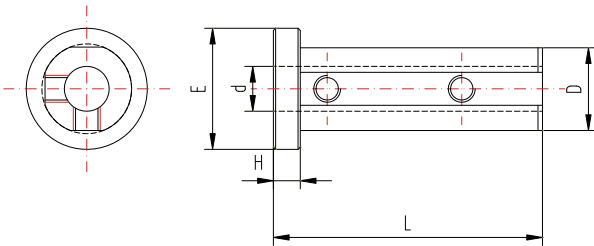
Cylindrical bushes

D=16 mm.

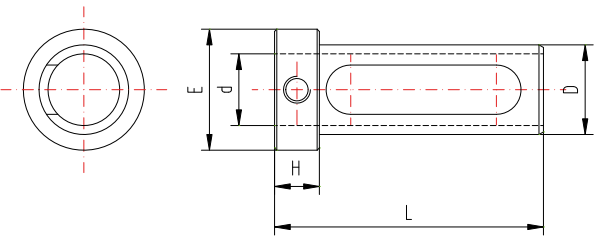


ARTICOLO-ITEM	D h7	d H8	L	H	E
B-16-6-50	16	6	50	5	20
B-16-8-50	16	8	50	5	20
B-16-10-50	16	10	50	5	20
B-16-12-50	16	12	50	5	20

D=19,5 mm. (3/4")

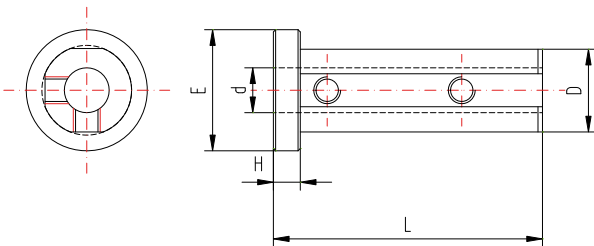


ARTICOLO-ITEM	D h7	d H8	L	H	E
B19,05-6-60	19,05	6	60	6	27
B19,05-8-60	19,05	8	60	6	27

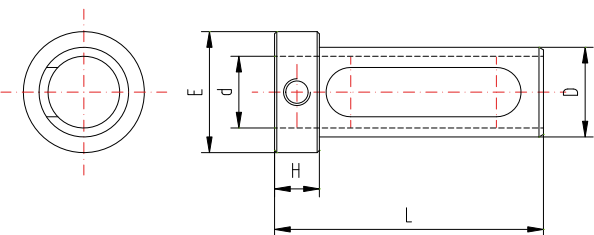


ARTICOLO-ITEM	D h7	d H8	L	H	E
B19,05-10-60	19,05	10	60	6	27
B19,05-12-60	19,05	12	60	10	27
B19,05-14-60	19,05	14	60	10	27
B19,05-16-60	19,05	16	60	10	27

D=20 mm.



ARTICOLO-ITEM	D h7	d H8	L	H	E
B20-6-60	20	6	60	6	27
B20-8-60	20	8	60	6	27
B20-10-60	20	10	60	6	27



ARTICOLO-ITEM	D h7	d H8	L	H	E
B20-12-60	20	12	60	10	27
B20-14-60	20	14	60	10	27
B20-16-60	20	16	60	10	27