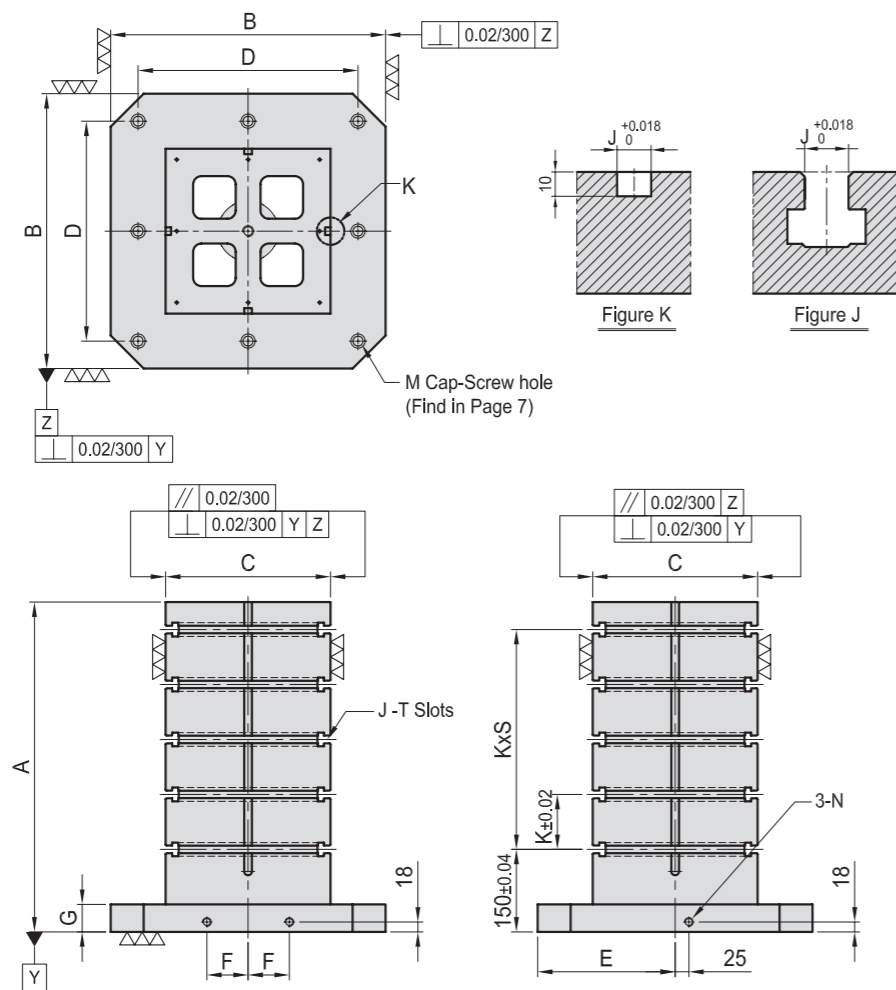




BP09

SQUARE TOOLING COLUMN

- Material: Cast Iron FC300(JIS) / GG30(DIN)
- Heat treated (Normalized)
- Application: Horizontal Machining Center.
- Features: T-Slots running horizontally, key-way running vertically, easily adapts to standardized jig components.
- Eye bolt & top cover included.



MODEL NO.	A	B	C	D	E	F	G	M	N	K	S	J	Mounting holes	kg
BP09-400400-0500-14	500													
BP09-400400-0650-14	650	400	250	320	200	55	50	M16	M16	100	3	14	4	160
BP09-500500-0600-14	600													
BP09-500500-0750-14	750	500	300	400	250	75	50	M16	M16	100	4	14	8	270
BP09-630630-0700-14	700													
BP09-630630-0850-14	850	630	350	500	315	100	50	M16	M16	125	4	14	8	375
BP09-800800-0800-14	800													
BP09-800800-1000-14	1000	800	500	640	400	135	50	M16	M16	150	4	14	8	655
BP09-10001000-1000-14	1000													
BP09-10001000-1250-14	1250	1000	600	800	500	165	55	M20	M16	160	5	14	8	1146
BP09-400400-0500-18	500													
BP09-400400-0650-18	650	400	250	320	200	55	50	M16	M16	100	3	18	4	155
BP09-500500-0600-18	600													
BP09-500500-0750-18	750	500	300	400	250	75	50	M16	M16	100	4	18	8	265
BP09-630630-0700-18	700													
BP09-630630-0850-18	850	630	350	500	315	100	50	M16	M16	125	4	18	8	365
BP09-800800-0800-18	800													
BP09-800800-1000-18	1000	800	500	640	400	135	50	M16	M16	150	4	18	8	638
BP09-10001000-1000-18	1000													
BP09-10001000-1250-18	1250	1000	600	800	500	165	55	M20	M16	160	5	18	8	1146

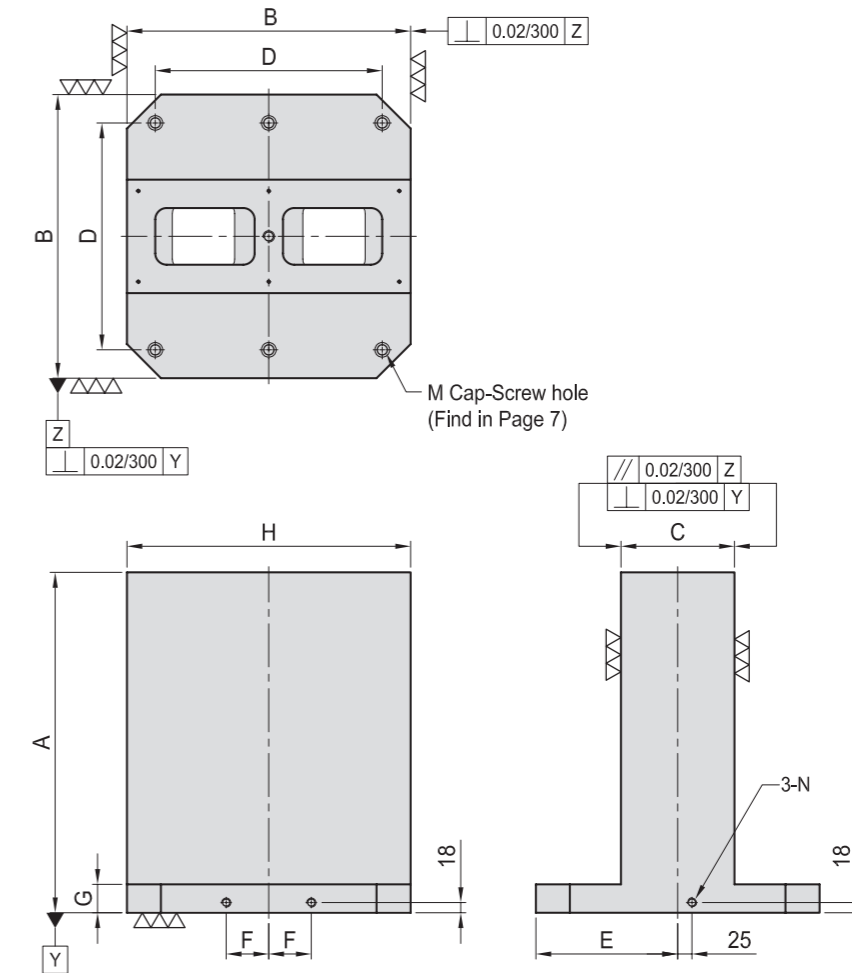
*Special Design Welcome !



BP10

DOUBLE SIDED TOOLING COLUMN

- Material: Cast Iron FC300(JIS) / GG30(DIN)
- Heat treated (Normalized)
- Application: Horizontal Machining Center.
- Features: Ready to accept a hole pattern for your special jig.
- Eye bolt & top cover included.



MODEL NO.	A	B	C	D	E	F	G	H	M	N	Mounting holes	kg
BP10-300300-0500	500	300	80	250	150	40	50	300	M12	M12	4	115
BP10-400400-0500	500											
BP10-400400-0650	650	400	150	320	200	55	50	400	M16	M16	4	170
BP10-500500-0600	600											
BP10-500500-0750	750	500	200	400	250	75	50	500	M16	M16	6	215
BP10-630630-0700	700											
BP10-630630-0850	850	630	250	500	315	100	50	630	M16	M16	6	270
BP10-800800-0800	800											
BP10-800800-1000	1000	800	300	640	400	135	50	800	M16	M16	6	350
BP10-10001000-1000	1000											
BP10-10001000-1250	1250	1000	350	800	500	165	55	1000	M20	M16	6	445

*Special Design Welcome !