

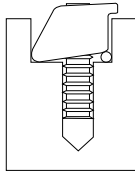
# Machinable Pitbull® Clamps



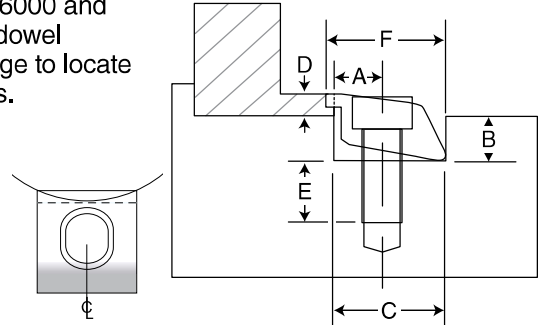
The popular Pitbull® Fixture Clamp is now available in a machinable version. The clamp has positive down force and a very low gripping profile, reducing material cost and number of operations.

The Machinable Pitbull® Clamp is made of A2 tool steel and heat treated to about 43RC for long life, yet still machinable. There is additional material on the clamping face to allow for machining a radius. It is available in two sizes with 6,000 and 12,000 lbs. (26000 and 50000 N) of holding force. A dowel pin is included in each package to locate clamp while machining radius.

Tighten clamp on dowel pin for proper location for machining clamp. Remove pin and install o-ring to clamp workpiece.



Maximum recommended stock removal from centerline of clamp:  
 26077 = .060      26088 = .180  
 (56077 = 1.5mm)      (56088 = 4.5mm)



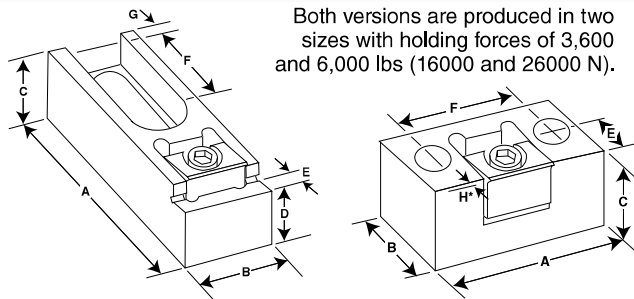
Part Number	Description	A	B	C	D*	E	F	Slot Width	Screw Size	Max. Torque	Total Holding Force	Total Throw	Dowel Pin	Clamps Per Package
INCH	26077 Tool Steel, Machinable	.400	.450	1.00	.250	.710	1.075	1.00	3/8-16	30.0 (Ft/Lbs)	6,000 (Lbs)	.050	1/8	4
	26088 Tool Steel, Machinable	.600	.640	1.50	.375	.770	1.70	1.50	1/2-13	108.3 (Ft/Lbs)	12,000 (Lbs)	.075	1/4	2
METRIC	56077 Tool Steel, Machinable	10.16	11.43	25.4	6.35	18.0	26.9	25.4	M10	40.6 (N.m.)	26,000 (N.)	1.27	3.18	4
	56088 Tool Steel, Machinable	15.24	16.26	38.1	9.52	19.6	42.6	38.1	M12	145.0 (N.m.)	50,000 (N.)	1.90	6.35	2

D\* - Minimum clamping height

# Modular Pitbull® Clamps



Both versions are produced in two sizes with holding forces of 3,600 and 6,000 lbs (16000 and 26000 N).



The Pitbull® Fixture Clamp is very well known for its low profile and positive down force. It is now available as a modular clamp in two styles.

The slotted Modular Pitbull® Clamp with a step offers increased versatility through its unique riser design. This clamp supports the workpiece off the machine table for through milling and drilling. The hardened and ground clamps are designed for use on work cubes, as well as machined tables with tapped holes or T-slot configurations.

The compact Modular Pitbull® Clamp is ideal for clamping workpieces in series by using the back surface of a clamp to locate the next workpiece. The back of the clamp is ground square to the bottom for precise location of parts. The height of the clamp can be adjusted by the depth of the milled slot used to locate the clamp.

- Part Number -		Description	A	B	C	D +.0000 -.0005	E	F	G	H*	Max. Torque (Ft/Lbs)	Holding Force (Lbs)	Mounting Screw	Slot	
Knife Edge	Blunt Edge														
INCH	26220	26225 Medium/Compact	2.25	1.23	.98	NA	.62	1.50	-	.024	14.5	3,600	5/16	-	
	26230	26235 Large/Compact	2.70	1.48	1.24	NA	.74	1.86	-	.050	30.0	6,000	3/8	-	
	26240	26245 Medium/Slotted	4.08	1.25	.99	.7300	.36	1.70	.50	.024	14.5	3,600	1/2	Closed	
	26250	26255 Large/Slotted	4.20	1.50	1.61	1.3780	.36	1.52	.43	.050	30.0	6,000	5/8	Closed	
												(N.m.)	(N.)		
METRIC	56220	56225 Medium/Compact	57.1	31.242	25.1	NA	15.7	38.1	-	.61	22.5	16000	M8	-	
	56230	56235 Large/Compact	68.6	37.592	31.5	NA	18.8	47.0	-	1.27	40.6	26000	M10	-	
	56240	56245 Medium/Slotted	103.6	31.700	25.1	18.542	9.1	43.2	12.7	.61	22.5	16000	M12	Closed	
	56250	56255 Large/Slotted	107.0	38.100	40.9	35.000	9.1	38.6	10.9	1.27	40.6	26000	M16	Closed	

H\* - Clamp travel

PATENT NO. 6435496