

Series-9 Clamps



This adjustable low profile, cam action clamp provides clamping of different size workpieces merely by rotating the clamp to one of its other edges. The clamps are .394 (10mm) high and use a 1/2-13 (M12) cam screw. Each of the six clamping surfaces is a different distance from the centerline as shown in the chart. Therefore, one Series-9 Clamp can hold parts that vary up to .240 (9.4mm) simply by rotating the clamp to a different clamping surface.

- ▶ Serrated or smooth edges
- ▶ Heat treated and plated
- ▶ 4,000 lbs. (17800 N.m.) holding force



TORQUE VALUES AND HOLDING FORCE

	Part Numbers	Use Screw Size	Max.Torque/ Holding Force	Replacement Cam Screw
INCH	90110 - 90145	1/2 - 13	65 Ft Lbs / 4000 Lbs	10374
METRIC	95110 - 95145	M12	88 N.m. / 17,800 N.	50371

Part Number		Description	Face Number	Distance from ϕ (metric)	
Inch	Metric				
90110	95110	1-6 Smooth	1	.4724 (12mm)	
90115	95115			1-6 Serrated	.5118 (13mm)
					.5512 (14mm)
					.5906 (15mm)
					.6299 (16mm)
					.6693 (17mm)
90120	95120	7-12 Smooth	7	.7086 (18mm)	
90125	95125			7-12 Serrated	.7480 (19mm)
					.7874 (20mm)
					.8268 (21mm)
					.8661 (22mm)
					.9055 (23mm)

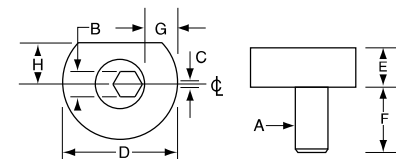
Part Number		Description	Face Number	Distance from ϕ (metric)	
Inch	Metric				
90130	95130	13-18 Smooth	13	.9449 (24mm)	
90135	95135			13-18 Serrated	.9842 (25mm)
					1.0236 (26mm)
					1.0630 (27mm)
					1.1024 (28mm)
					1.1417 (29mm)
90140	95140	19-24 Smooth	19	1.1811 (30mm)	
90145	95145			19-24 Serrated	1.2205 (31mm)
					1.2598 (32mm)
					1.2992 (33mm)
					1.3386 (34mm)
					1.3780 (35mm)

Machinable Fixture Clamps



These clamps, with the machinable steel washers, provide more flexibility for holding round or unusual shaped parts. Parts can be held directly to the fixture plate surface or elevated for through drilling. A special screw is provided with each package to hold the washer in the proper place during machining.

The flat edge is the same location as our original fixture clamps. It can be used where a stronger clamping surface is required.



- ▶ Low profile
- ▶ Made of mild steel for machinability



Part Number	A	B	C	D	E	F	G*	H†	Max. Torque (Ft/Lbs)	Holding Force (Lbs)	Number of Clamps Per Pack	Replacement Cam Screw	Washer
INCH													
10504	1/4 - 20	1/8	.040	.980	.250	.470	.250	.312	6.2	800	4	10365	10604
10506	3/8 - 16	3/16	.050	1.230	.350	.710	.275	.406	20.8	2,000	4	10371	10606
10508	1/2 - 13	5/16	.100	1.480	.450	.900	.300	.500	65.0	4,000	4	10373	10608
10510	5/8 - 11	3/8	.100	1.730	.550	1.125	.350	.593	100.0	6,000	4	10375	10610
									(N.m.)	(N.)			
METRIC													
50506	M6	4M	1.01	24.9	6.4	11.9	6.4	7.8	8.5	3358	4	50365	10604
50510	M10	7M	1.52	31.2	8.9	18.0	7.0	10.2	28.0	8900	4	50369	10606
50512	M12	8M	2.03	37.6	11.4	22.9	7.6	12.7	88.0	17800	4	50371	10612
50516	M16	12M	2.54	43.9	14.0	28.6	8.9	15.0	135.0	26700	4	50373	10610

G* - Amount of machinable stock H† - The distance to drill & tap hole from edge of workpiece to use flat face.
Every package includes one machining screw