

PT12

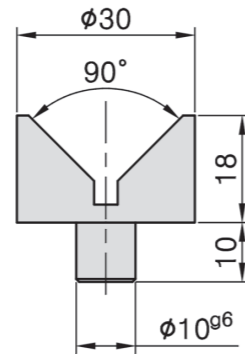
JACK SCREW TIP

- Material : SCM440(JIS) / 42CrMo4(DIN)
- Heat treated : HRC 60°
- Surface finish : Black Oxide.
- Application : Multipurpose support tip, use with SU11.

PT12A-3028



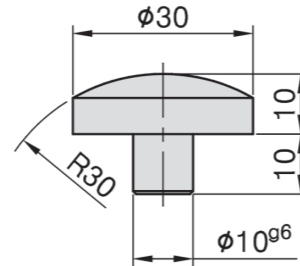
NW : 70g



PT12B-3020



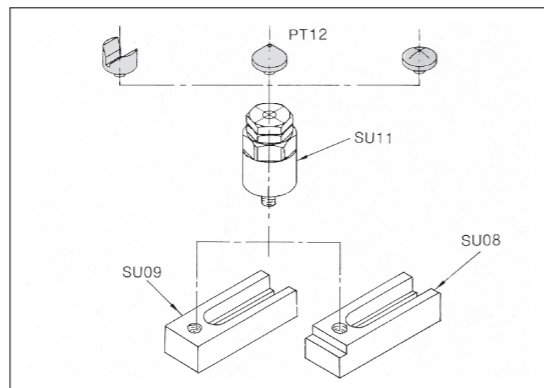
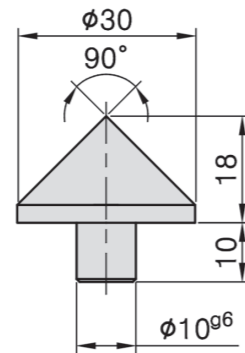
NW : 50g



PT12C-3028



NW : 60g



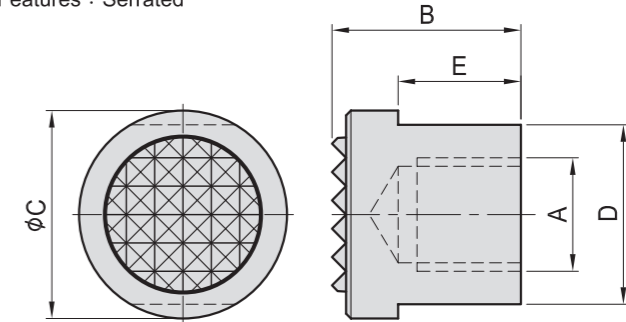
PT13 SERRATED END



PT13-15

GRIPPER NUT

- Material : S45C(JIS)
- Surface finish : Black Oxide.
- Application : Use for supporting workpiece.
- Features : Serrated



Tooth plate

- Material : SKH9(JIS)S18-1-2-5(DIN)
- Heat treated : HRC 60°
- Surface finish : Black Oxide.

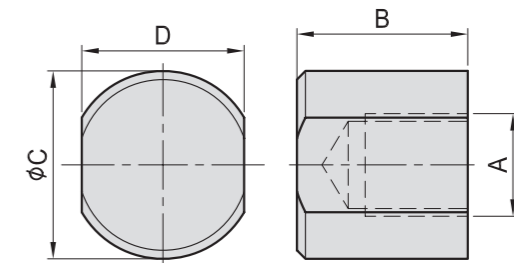
MODEL NO.	A	B	C	D	E	kg
PT13-1220	M12	20	22	19	13	0.043
PT13-1625	M16	25	28	24	16	0.080

Tooth plate

- Material : Extremely hard.
- Surface finish : Black Oxide.

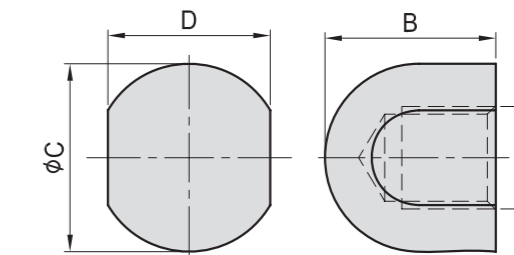
MODEL NO.	A	B	C	D	E	kg
PT13-1220-K	M12	20	22	19	13	0.043
PT13-1625-K	M16	25	28	24	16	0.080

PT14 FLAT END



MODEL NO.	A	B	C	D	kg
PT14-1220	M12	20	22	19	0.043
PT14-1625	M16	25	28	24	0.076

PT15 ROUND END



MODEL NO.	A	B	C	D	kg
PT15-1220	M12	20	22	19	0.042
PT15-1625	M16	25	28	24	0.063

BP

BPA

BC

CP

SU

PT

SVF

ALV

OK-
VISE

OTHER

Column
for
Technical
Data