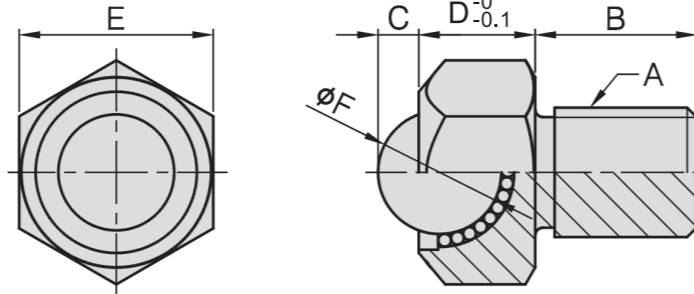


# PT47-49

## BALL ROLLERS

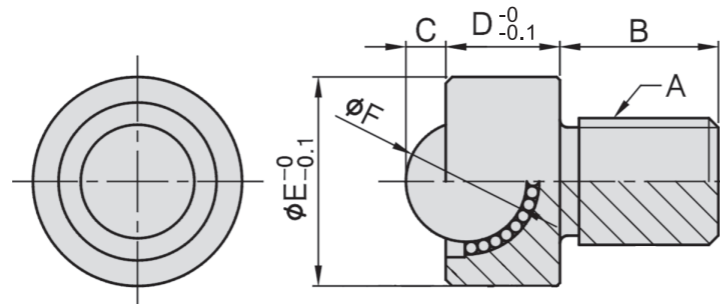
• Material : SUS304(JIS)

PT47



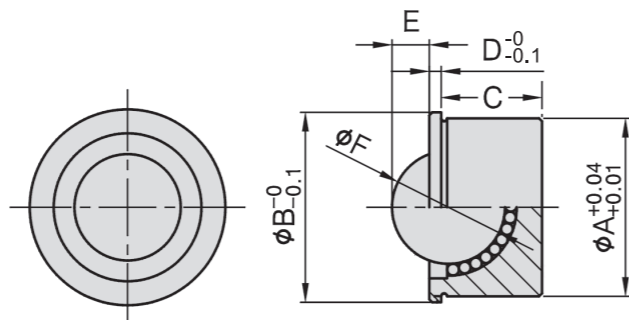
MODEL NO.	A	B	C	D	E	F	N(kgf)
PT47-1615	M16	20	3.3	16	24	15.87	343(35)
PT47-2018	M20	25	5.3	19	30	19.05	412(42)

PT48



MODEL NO.	A	B	C	D	E	F	G	N(kgf)
PT48-1615	M16	20	3.3	16	27	15.87	23	343(35)
PT48-2018	M20	25	5.3	19	33	19.05	29	412(42)

PT49



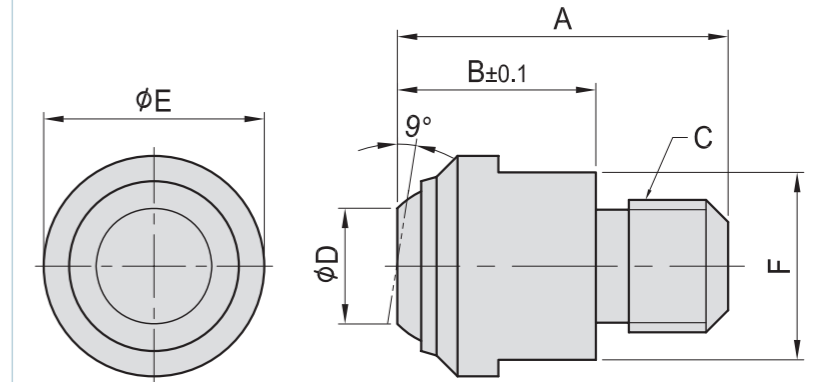
MODEL NO.	A	B	C	D	E	F	N(kgf)
PT49-2614	24	26	14	1.5	5.3	15.87	343(35)
PT49-3217	30	32	17	2	6.3	19.05	412(42)



- Material :  
Bolt : S45C(JIS) / CK45(DIN)  
Ball : SUJ2(JIS) / 100Cr6(DIN)
- Heat treated :  
Bolt : HRC 28°~32°  
Ball : HRC 62°
- Surface finish : Black Oxide.
- Application : Precision swivel ball that can be used either as a contact bolt or as a rest pad. As contact bolts, these swivel-ball units are ideal for evenly distributing clamping pressure on sloped or uneven surfaces.
- Features : Precision ground top surface.

# PT50

## SMOOTH BALL END BOLT



MODEL NO.	A	B	C	D	E	F	max (KN)	g
PT50-0613	21	13	M6x1.00	7.2	13	11	10	12
PT50-0813	21	13	M8x1.25	7.2	13	11	10	13
PT50-0818	28	18	M8x1.25	10.5	20	17	25	38
PT50-1018	28	18	M10x1.50	10.5	20	17	25	40
PT50-1218	30	18	M12x1.75	10.5	20	17	25	40
PT50-1627	43	27	M16x2.00	20.0	30	27	90	150
PT50-2035	55	35	M20x2.50	34.5	50	41	165	520

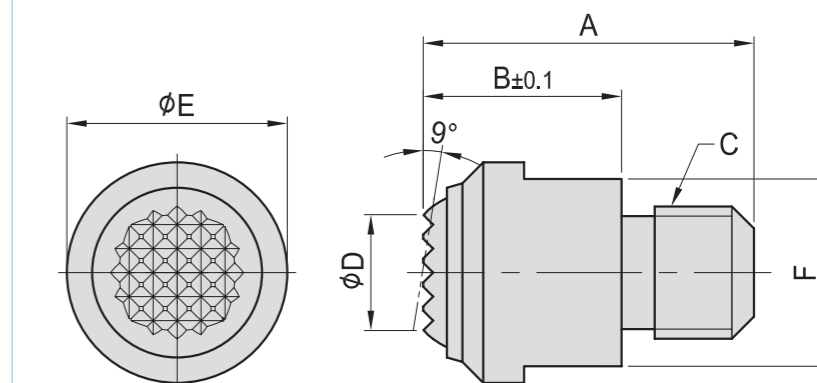
\*Applies only when the minimum bore depth is kept to.



- Material :  
Bolt : S45C(JIS) / CK45(DIN)  
Ball : SUJ2(JIS) / 100Cr6(DIN)
- Heat treated :  
Bolt : HRC 28°~32°  
Ball : HRC 62°
- Surface finish : Black Oxide.
- Application : Precision swivel ball that can be used either as a contact bolt or as a rest pad. As contact bolts, these swivel-ball units are ideal for evenly distributing clamping pressure on sloped or uneven surfaces.
- Features : serrated gripper is ideal for rough surfaces.

# PT51

## SMOOTH BALL END BOLT



MODEL NO.	A	B	C	D	E	F	max (KN)	g
PT51-0613	21	13	M6x1.00	7.2	13	11	10	12
PT51-0813	21	13	M8x1.25	7.2	13	11	10	13
PT51-0818	28	18	M8x1.25	10.5	20	17	25	38
PT51-1018	28	18	M10x1.50	10.5	20	17	25	40
PT51-1218	30	18	M12x1.75	10.5	20	17	25	40
PT51-1627	43	27	M16x2.00	20.0	30	27	90	150
PT51-2035	55	35	M20x2.50	34.5	50	41	165	520

\*Applies only when the minimum bore depth is kept to.

BP

BPA

BC

CP

SU

PT

SVF

ALV

OK-  
VISE

OTHER

Column  
for  
Technical  
Data