

OK-VISE®

FIXTURING CONCEPT

Combo-Rail



GENERIC FIXTURING COMPONENTS

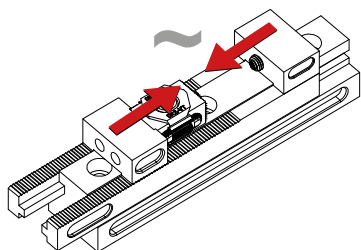
ALL BASED ON
ORIGINAL
OK-VISE®
Clamping Method



OK-VISE COMBO-RAIL

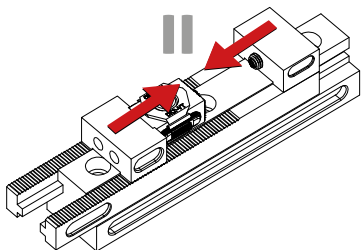
OK-VISE Combo-Rail is a unique patent-pending design from us.

There are several operating modes available:



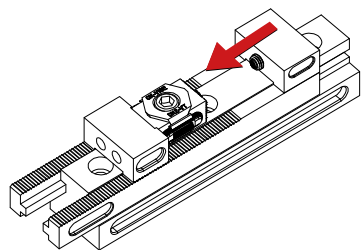
Floating mode

- This is the most fascinating operating mode of the Combo-Rail. Here the fixture adjusts to the place of the workpiece.
- This is often needed while clamping inaccurate workpieces like castings, forgings or flame cut work pieces.
- Therefore floating mode installation normally needs positioning with some other means, like two Multi-Rail units, positioning pins, positioning by a robot etc.



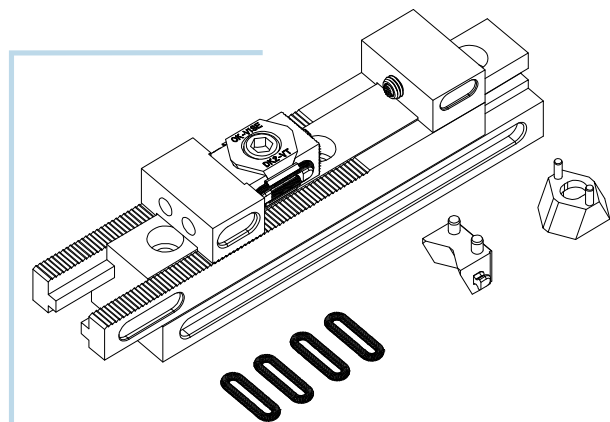
Centralising mode

- The jaws move synchronously. The centre line of a casting or similar workpiece remains in the same place even if the outer dimensions of the workpiece changes.



Machine vise mode

- In this mode the other jaw is fixed to the base. Compared to traditional Vises, in this method the ergonomics are radically improved in vertical machining centres.



CRH-K250

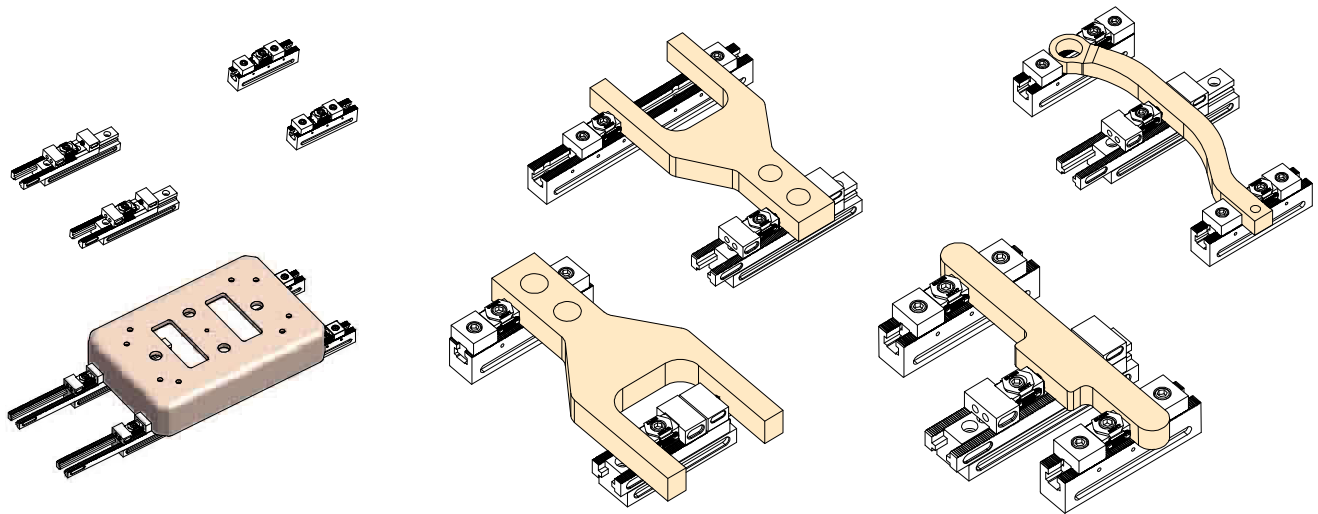
CRH-K250 is a Combo-Rail unit that can be set in all three modes as mentioned before, operating modes by changing the jaw or wedge components (all included). All workpieces from 0 to 120 mm size can be clamped. The base height is 50 mm and total length is 250 mm.



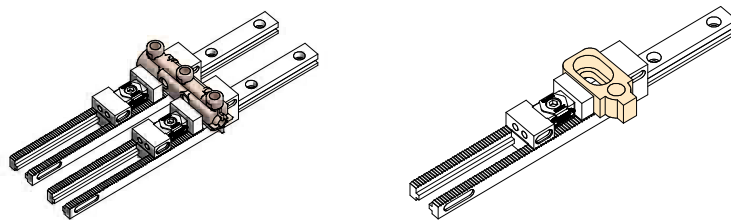
COMBO-RAIL APPLICATIONS

Please notice that the Combo-Rail units can be combined with most of OK-VISE Fixturing Concept components. Especially combining Combo-Rail units with OK-VISE Multi-Rail has been proven to be a brilliant combination. Special versions are also available, please do not hesitate to ask for price and delivery time from our local dealer.

Floating mode

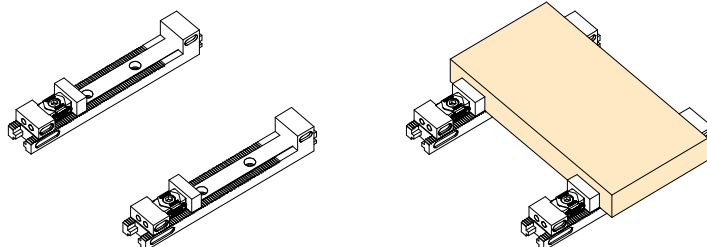


Centralising mode



There are several adapter sets available for various platforms.

Machine vise mode



OK-VISE FIXTURING CONCEPT

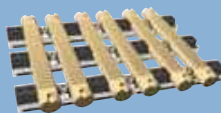
All platforms, All workpieces

GENERIC FIXTURING CONCEPTS

Multi-Rail RM System



Multi-Rail RH System



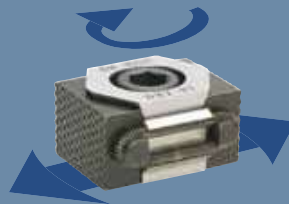
Grid Fixturing System



Combo-Rail



LOW-PROFILE CLAMPS



OK-VISE®
Clamping Method

COMPONENTS FOR DEDICATED FIXTURING

Blank Fixturing System



The original OK-VISE low-profile clamps are known worldwide as a core component of any modern workholding system. In the machining industry, the OK-VISE name means quality.



The mother company of OK-VISE OY is Kytola Instruments. The company is known for manufacturing precision instruments.

www.kytola.com



MANUFACTURER

OK-VISE®

OK-Vise Oy, P.O.Box 5
40951 Muurame, Finland
Tel. +358 20 7790 699, Fax +358 14 631 419
Technical questions: support@ok-vise.com
www.ok-vise.com

DISTRIBUTOR