

THE INFORMATION CONTAINED IN THIS DRAWING IS THE SOLE PROPERTY OF ABBOTT WORKHOLDING PRODUCTS. ANY REPRODUCTION IN PART OR WHOLE WITHOUT THE WRITTEN PERMISSION OF ABBOTT WORKHOLDING PRODUCTS IS PROHIBITED.

.275  
.250  
TYP.  
Slot Depth

8"  
MIN

1"  
C'Bore Wall

1°  
TYP.

(8 21/32")

Machined On Narrow  
Side of Draft

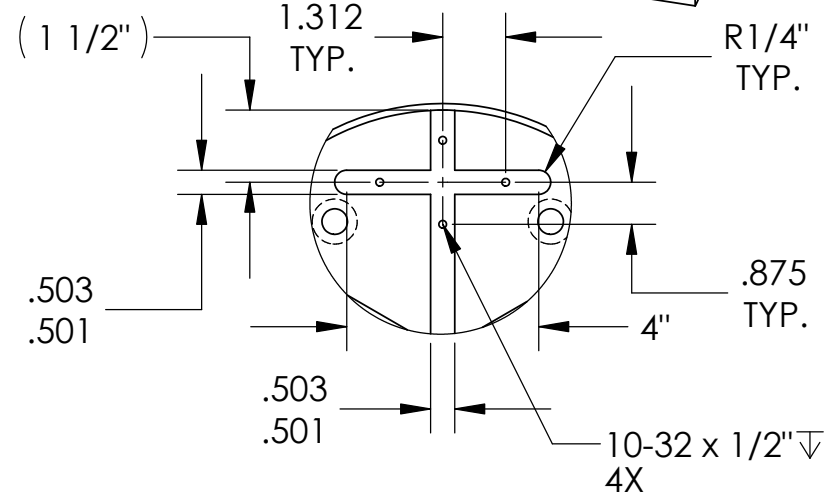
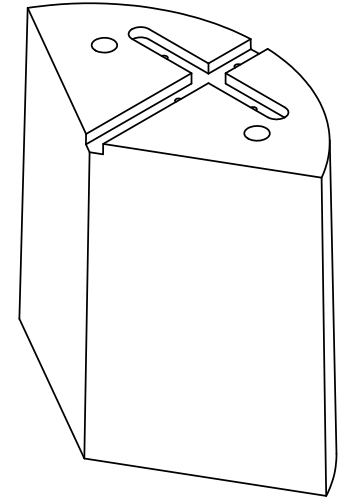
.819  
TYP.

2.249  
TYP.

(3 1/2")

Hole Pattern "L"

R5"  
30°  
Ø 17/32" Thru Holes  
Ø 15/16" C'Bore Holes  
2X



DETAIL A

UNLESS OTHERWISE SPECIFIED DIMENSIONS ARE IN INCHES TOLERANCES ARE: FRACTIONS DECIMALS ANGLES ±1/32 .XX±.015 ±5° .XXX±.005 .XXXX±.0005	
DRAWN DSW	DATE 11/20/00
MATERIAL 319	WEIGHT (POUNDS) 21.2
STYLE O	DISPOSITION Released

**Abbott Workholding Products**

430 McCall Road  
Manhattan, KS 66502  
785-776-8555  
785-587-0004 Fax  
800-528-6459  
www.abbottworkholding.com  
engineering@abbottworkholding.com

CUSTOMER: Stock	SIZE A	Part Name 10SP8	REV. B
--------------------	-----------	--------------------	-----------