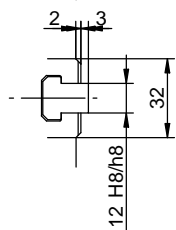


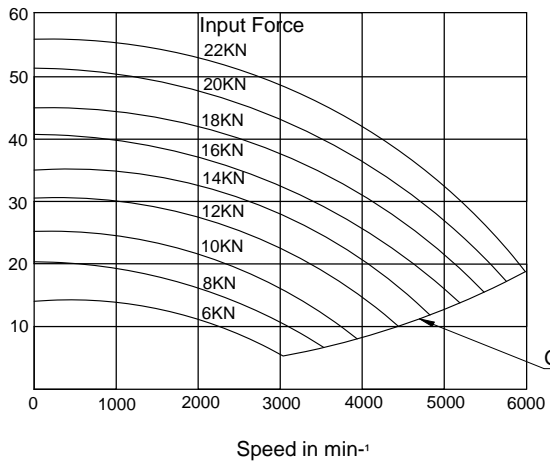
Specifications

SPINDLE NOSE SIZE	A2-5
THROUGH HOLE	45mm
MAX. GRIPPING RANGE	169mm
MIN. GRIPPING RANGE	16mm
JAW STROKE	5.5mm
PLUNGER STROKE	12mm
MAX. DRAW BAR PULL FORCE	22kN
MAX. GRIPPING FORCE	57kN
MAX. SPEED	6000min <sup>-1</sup>
TOTAL GRIPPING FORCE AT MAX. SPEED	19kN
NET WEIGHT WITH SOFT TOP JAWS	13.7kg
MOMENT OF INERTIA	0.063kg.m <sup>2</sup>
MATCHING CYLINDER	S1246
MAX. PRESSURE	2.80MPa
MATCHING HARD TOP JAW	HB06B1
MATCHING SOFT TOP JAW	SB06L1A/KSJ-206



Total Gripping Force in KN

Gripping Characteristic Graph For B-206A5



KITAGAWA EUROPE LIMITED  
 TITLE : B206A5 POWER CHUCK  
 www.kitagawaeurope.com