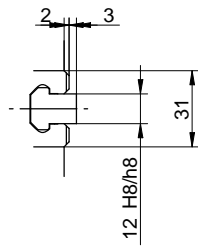
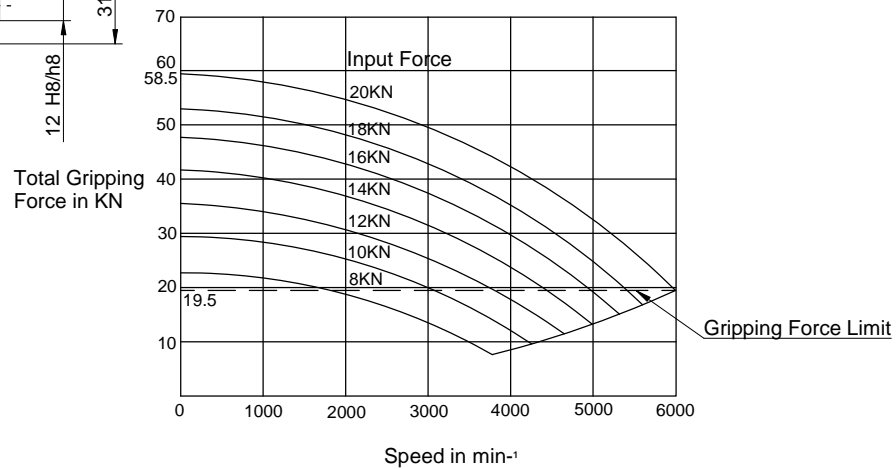


Specifications

SPINDLE NOSE SIZE	A2-5
THROUGH HOLE	53mm
MAX. GRIPPING RANGE	170mm
MIN. GRIPPING RANGE	19mm
JAW STROKE	5.5mm
PLUNGER STROKE	12mm
MAX. PERMISSIBLE INPUT FORCE	20kN
MAX. STATIC GRIPPING FORCE	58.5kN
MAX. PERMISSIBLE SPEED	6000min <sup>-1</sup>
TOTAL GRIPPING FORCE AT MAX. SPEED	19.5kN
MASS WITH STANDARD SOFT TOP JAWS	12.7kg
MOMENT OF INERTIA	0.051kg.m <sup>2</sup>
MATCHING CYLINDER	SS1453K
MAX. PERMISSIBLE OIL PRESSURE	1.88MPa
MATCHING HARD TOP JAW	HB06B1
MATCHING SOFT TOP JAW	SB06B1



Gripping Characteristic Graph For BB206A5



KITAGAWA EUROPE LIMITED  
 TITLE : BB206A5 POWER CHUCK  
 www.kitagawaeurope.com