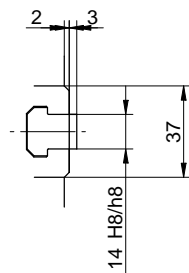
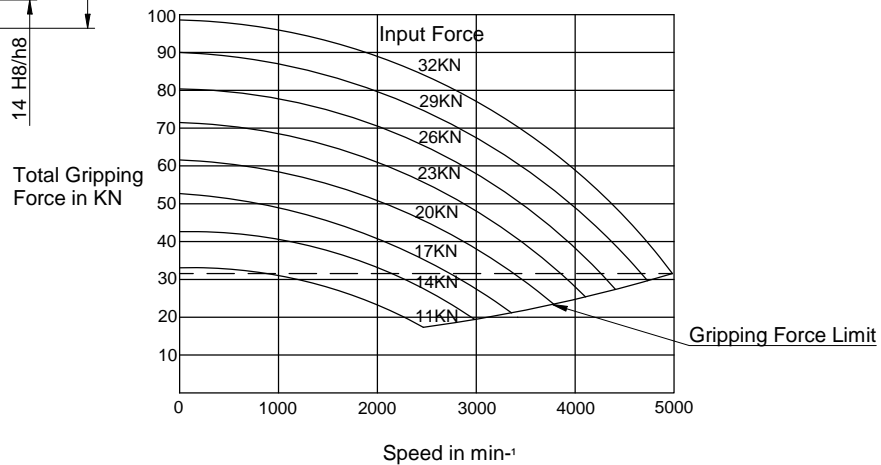


Specifications

SPINDLE NOSE SIZE	A2-6
THROUGH HOLE	66mm
MAX. GRIPPING RANGE	210mm
MIN. GRIPPING RANGE	23mm
JAW STROKE	7.4mm
PLUNGER STROKE	16mm
MAX. PERMISSIBLE INPUT FORCE	32kN
MAX. STATIC GRIPPING FORCE	99kN
MAX. PERMISSIBLE SPEED	5000min ⁻¹
TOTAL GRIPPING FORCE AT MAX. SPEED	33kN
MASS WITH STANDARD SOFT TOP JAWS	25kg
MOMENT OF INERTIA	0.143kg.m ²
MATCHING CYLINDER	SS1666K
MAX. PERMISSIBLE OIL PRESSURE	2.34MPa
MATCHING HARD TOP JAW	HB08B1
MATCHING SOFT TOP JAW	SB08B1



Gripping Characteristic Graph For BB208A6



KITAGAWA EUROPE LIMITED
 TITLE : BB208A6 POWER CHUCK
 www.kitagawaeurope.com