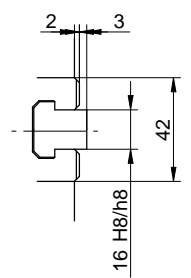


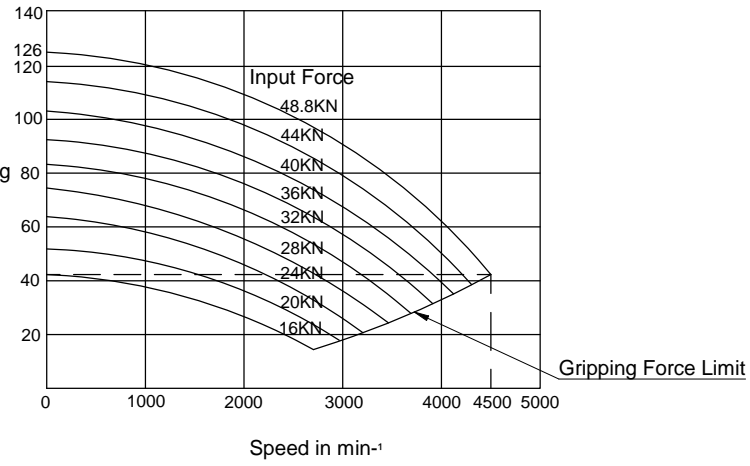
Specifications

SPINDLE NOSE SIZE	A2-6
THROUGH HOLE	81mm
MAX. GRIPPING RANGE	254mm
MIN. GRIPPING RANGE	41mm
JAW STROKE	8.8mm
PLUNGER STROKE	19mm
MAX. PERMISSIBLE INPUT FORCE	48.8kN
MAX. STATIC GRIPPING FORCE	126kN
MAX. PERMISSIBLE SPEED	4500min <sup>-1</sup>
TOTAL GRIPPING FORCE AT MAX. SPEED	42kN
NET WEIGHT WITH SOFT TOP JAWS	37.6kg
MOMENT OF INERTIA	0.355kg.m <sup>2</sup>
MATCHING CYLINDER	SS1881K
MAX. PERMISSIBLE OIL PRESSURE	3.09MPa
MATCHING HARD TOP JAW	HB10AA1
MATCHING SOFT TOP JAW	SB10B1



Total Gripping Force in KN

Gripping Characteristic Graph For BB210A6



KITAGAWA EUROPE LIMITED  
 TITLE : BB210A6 POWER CHUCK  
 www.kitagawaeurope.com