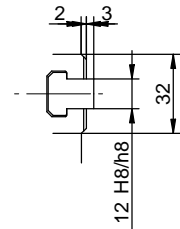


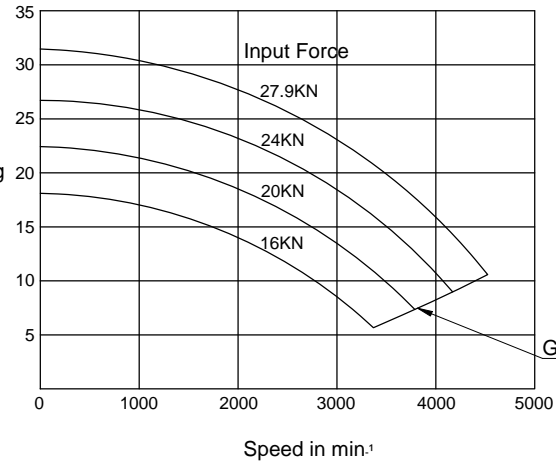
Specifications

SPINDLE NOSE SIZE	A2-5
THROUGH HOLE	28mm
MAX. GRIPPING RANGE	165mm
MIN. GRIPPING RANGE	28mm
JAW STROKE	20mm
PLUNGER STROKE	15mm
MAX. DRAW BAR PULL FORCE	27.9kN
MAX. GRIPPING FORCE	31.2kN
MAX. SPEED	4500min ⁻¹
TOTAL GRIPPING FORCE AT MAX. SPEED	10.4kN
NET WEIGHT WITH SOFT TOP JAWS	15.2kg
MOMENT OF INERTIA	0.048kg.m ²
MATCHING CYLINDER	S1246
MAX. PRESSURE	3.40MPa
MATCHING HARD TOP JAW	HB06B1
MATCHING SOFT TOP JAW	SB06L1A



Gripping Characteristic Graph For BL-206A5

Total Gripping Force in kN



KITAGAWA EUROPE LIMITED
 TITLE : BL206A5 POWER CHUCK
 www.kitagawaeurope.com