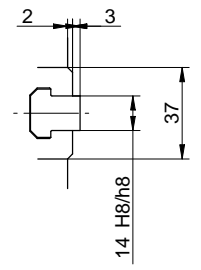
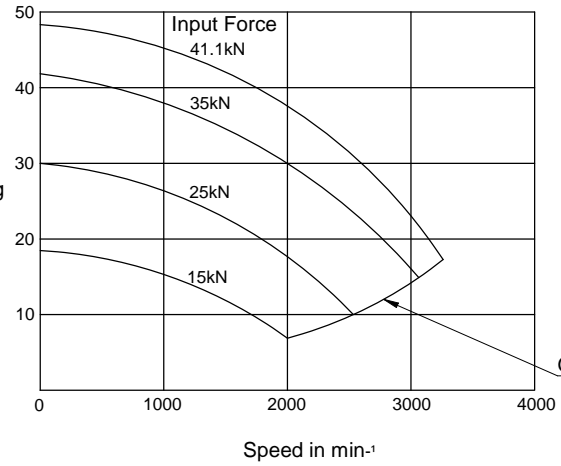


Specifications

SPINDLE NOSE SIZE	A2-6
THROUGH HOLE	45mm
MAX. GRIPPING RANGE	215mm
MIN. GRIPPING RANGE	32mm
JAW STROKE	25mm
PLUNGER STROKE	19mm
MAX. DRAW BAR PULL FORCE	41.1kN
MAX. GRIPPING FORCE	49.0kN
MAX. SPEED	3300min <sup>-1</sup>
TOTAL GRIPPING FORCE AT MAX. SPEED	16.3kN
NET WEIGHT WITH SOFT TOP JAWS	26kg
MOMENT OF INERTIA	0.208kg.m <sup>2</sup>
MATCHING CYLINDER	S1552
MAX. PRESSURE	2.99MPa
MATCHING HARD TOP JAW	HB08A1
MATCHING SOFT TOP JAW	SB08B1



Gripping Characteristic Graph For BL-208A6



KITAGAWA EUROPE LIMITED  
 TITLE : BL208A6 POWER CHUCK  
 www.kitagawaeurope.com