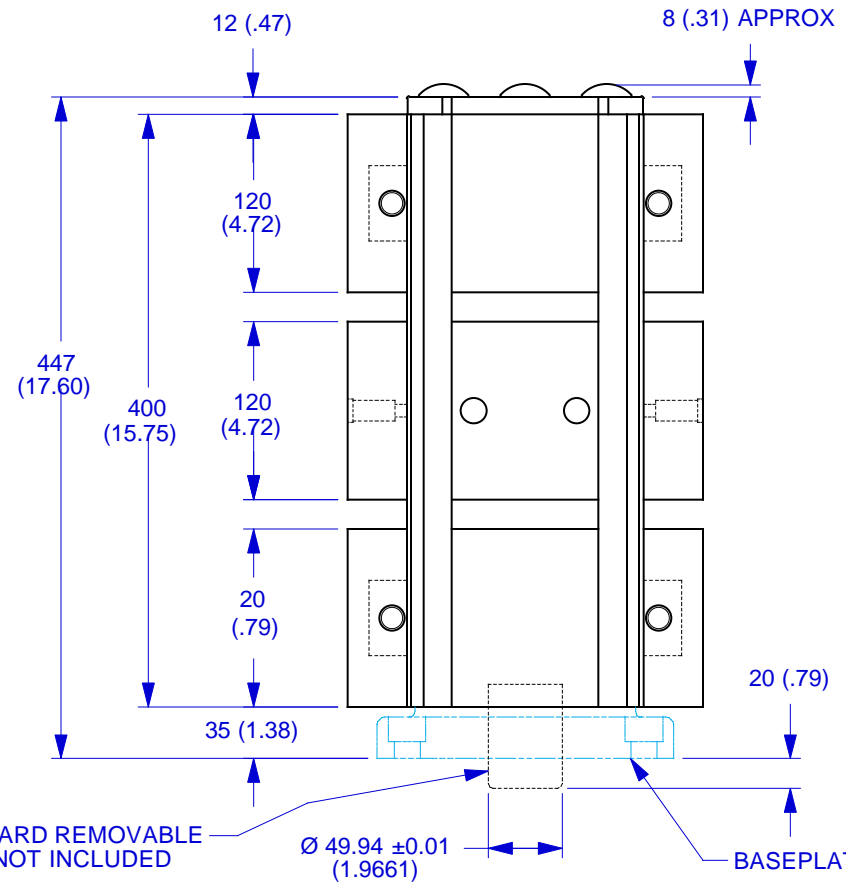
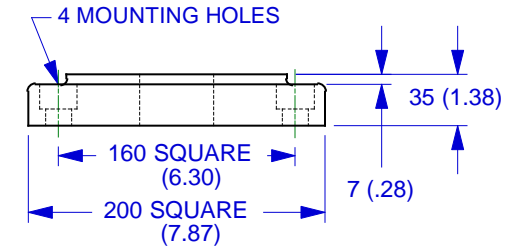
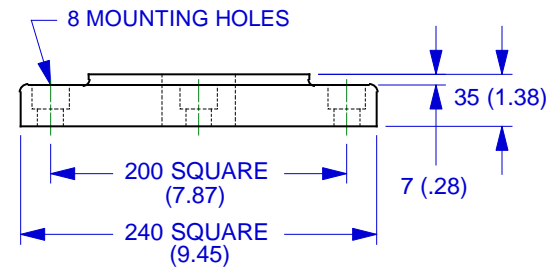


**STANDARD BASEPLATES
(NOT INCLUDED WITH MULTI-LOK)**

FOR 80mm X 80mm HOLE PATTERN
MBP10-08M12 HAS HOLES FOR M12 MOUNTING SCREWS
MBP10-08M16 HAS HOLES FOR M16 MOUNTING SCREWS



FOR 100mm X 100mm HOLE PATTERN
MBP10-10M12 HAS HOLES FOR M12 MOUNTING SCREWS
MBP10-10M16 HAS HOLES FOR M16 MOUNTING SCREWS



SEE DRAWING 025-1504 FOR COMPLETE JAW DIMENSIONS.

SEE DRAWING 025-1604 FOR CLAMPING CAPACITIES.

DIMENSIONS ARE IN mm AND (INCHES)

STANDARD REMOVABLE PILOT NOT INCLUDED

BASEPLATE NOT INCLUDED

CHICK 500 Keystone Drive
Warrendale, PA USA
(800) 33-CHICK • (724) 772-1644
www.chick-workholding.com

**MULTI-LOK MML1040
DIMENSIONS**

JKR	1 OF 1	027-1004 B
17JAN 95		