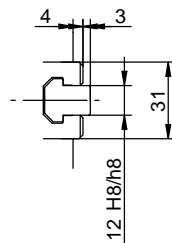


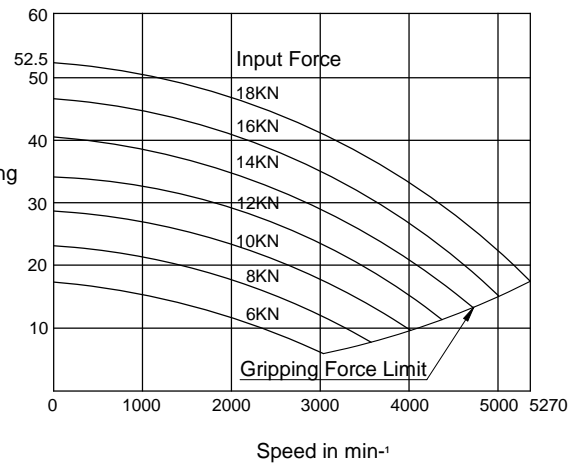
Specifications

SPINDLE NOSE SIZE	A2-5
MAX. GRIPPING RANGE	165mm
MIN. GRIPPING RANGE	19mm
JAW STROKE	8.5mm
PLUNGER STROKE	20mm
MAX. DRAW BAR PULL FORCE	18kN
MAX. GRIPPING FORCE	52.5kN
MAX. SPEED	5270min <sup>-1</sup>
TOTAL GRIPPING FORCE AT MAX. SPEED	17.5kN
NET WEIGHT WITH SOFT TOP JAWS	14kg
MOMENT OF INERTIA	0.050kg.m <sup>2</sup>
MATCHING CYLINDER (HYDRAULIC)	Y1020R
MATCHING CYLINDER (AIR)	AY1720R
MAX. PRESSURE	2.60MPa
MATCHING HARD TOP JAW	HB06B1
MATCHING SOFT TOP JAW	SB06B1



Total Gripping Force in KN

Gripping Characteristic Graph For N-06A5



KITAGAWA EUROPE LIMITED  
 TITLE : N-06A5 POWER CHUCK  
 www.kitagawaeurope.com