

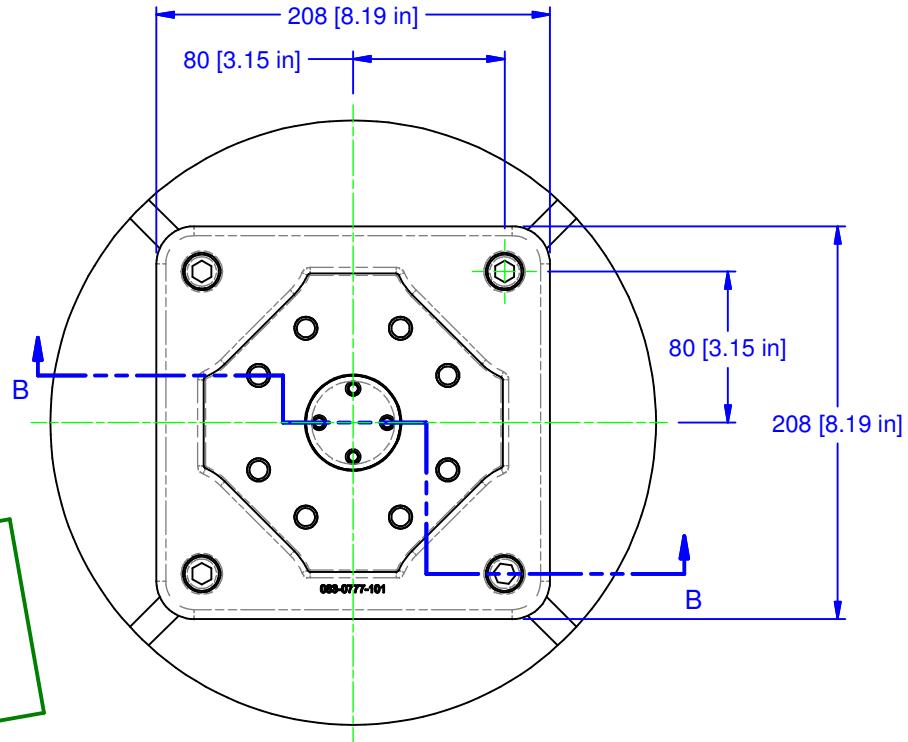
VERIFICATION DRAWING

SHIPPING ARRANGEMENT

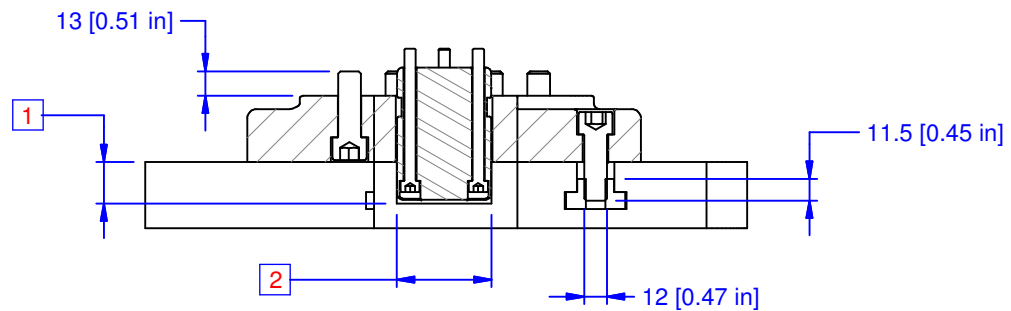
CHICK (800) 332-4425
 (724) 772-1644
www.ChickWorkholding.com

**WORK PKG - 5-AXIS
 HERMLE C12 (14mm T-SLOTS)
 5ML05-41
 208 SQ BASE X 285 TALL**

JGA	1 OF 4	5AP-HERM-00022 V	REV 1
2/24/2016			



REVIEWED BY:
DATE:



SECTION B-B

NOTES:

- 1 CUSTOMER TO VERIFY PALLET CENTER HOLE DIAMETER
- 2 CUSTOMER TO VERIFY PALLET CENTER HOLE DEPTH

VERIFICATION DRAWING

PALLET FIT CHECK

CHICK (800) 332-4425
(724) 772-1644
www.ChickWorkholding.com

WORK PKG - 5-AXIS
HERMLE C12 (14mm T-SLOTS)
5ML05-41
208 SQ BASE X 285 TALL

JGA	2 OF 4	5AP-HERM-00022 V	REV
2/24/2016			1

Ø320 [Ø12.60 in]
MAXIMUM
WORKPIECE
SWING

220 [8.66 in]

440 [17.32 in]
Y-TRAVEL

175 [6.89 in]

350 [13.78 in]
X-TRAVEL

REVIEWED BY:

DATE:

330 [12.99 in]
Z-TRAVEL

285 [11.22 in]

265 [10.43 in]
MAXIMUM
WORKPIECE
HEIGHT

100 [3.94 in]

35 [1.38 in]

Ø320 [Ø12.60 in]

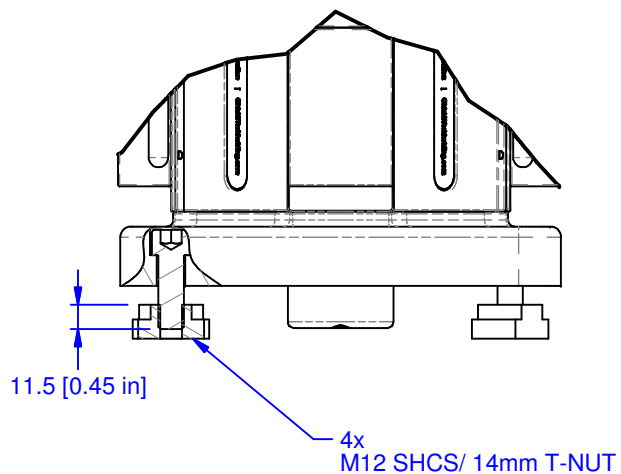
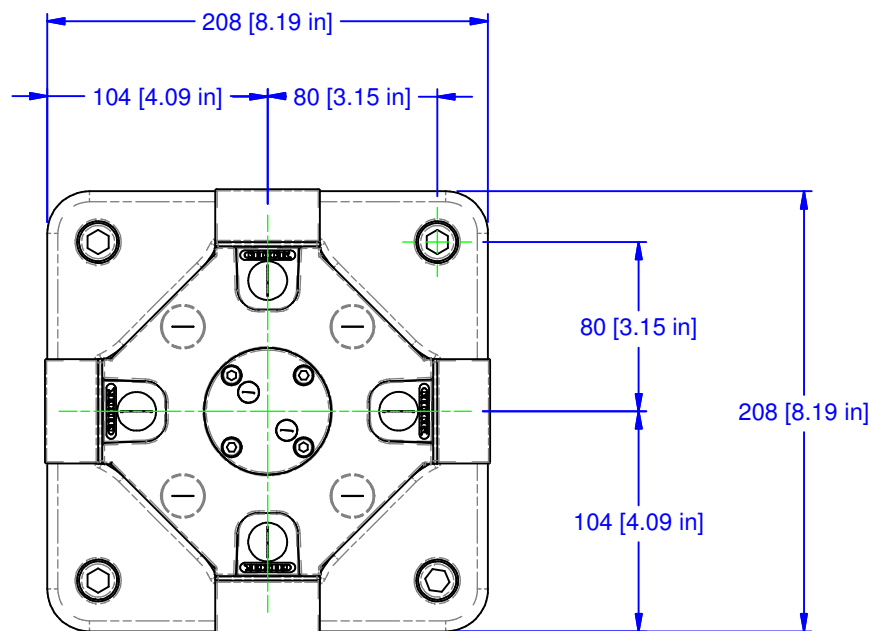
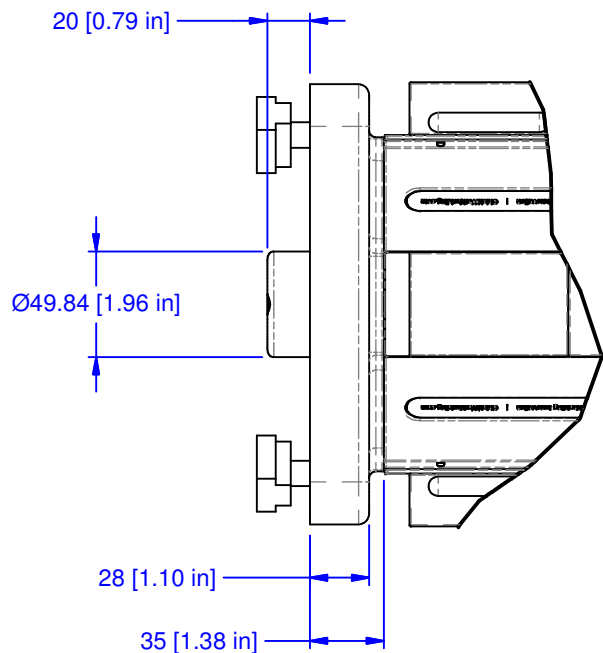
VERIFICATION DRAWING

WORK ENVELOPE

CHICK (800) 332-4425
(724) 772-1644
www.ChickWorkholding.com

WORK PKG - 5-AXIS
HERMLE C12 (14mm T-SLOTS)
5ML05-41
208 SQ BASE X 285 TALL

JGA	3 OF 4	5AP-HERM-00022 V	REV
2/24/2016			1



REVIEWED BY:

DATE:

PALLET INTERFACE

CHICK (800) 332-4425
(724) 772-1644
www.ChickWorkholding.com

WORK PKG - 5-AXIS
HERMLE C12 (14mm T-SLOTS)
5ML05-41
208 SQ BASE X 285 TALL

JGA	4 OF 4	5AP-HERM-00022 V	REV
2/24/2016			1

VERIFICATION DRAWING