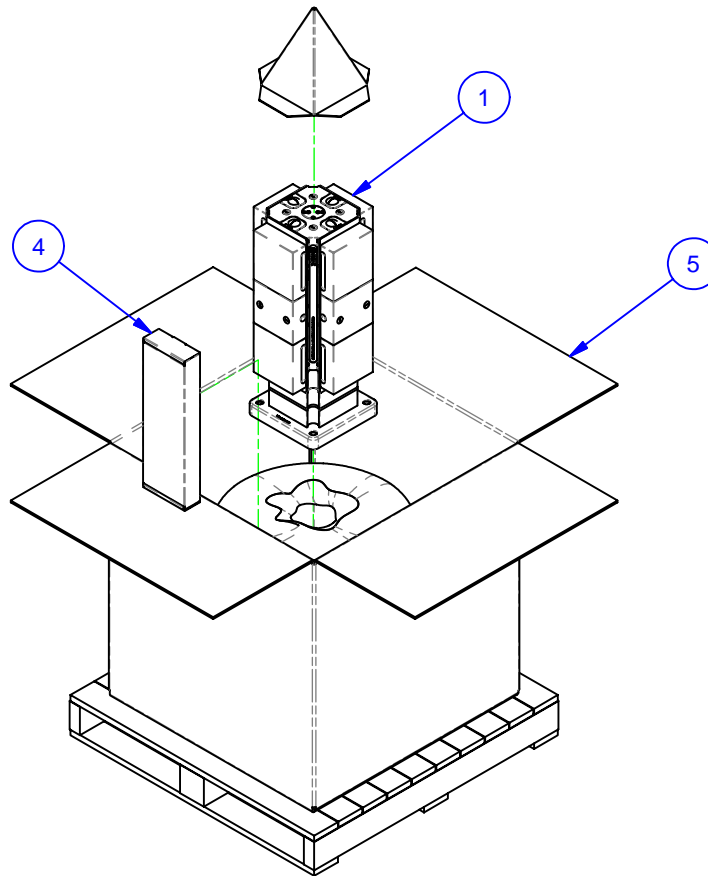

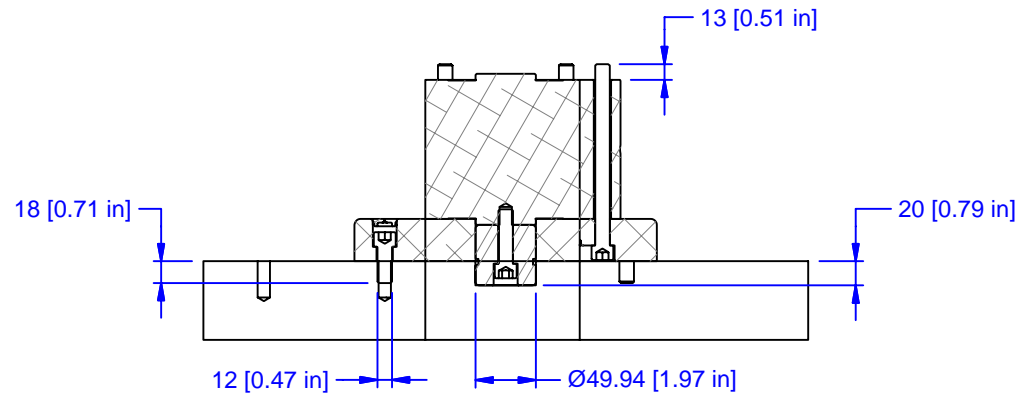
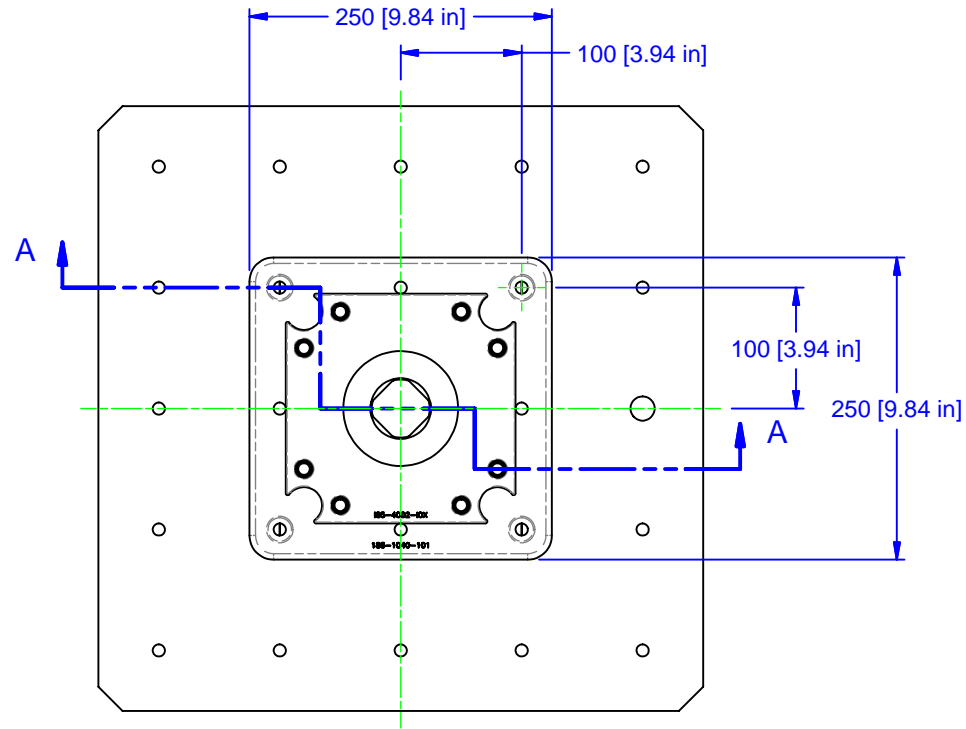


PARTS LIST						
No	QTY	PN	ITEM	TYPE	FAM	STYLE
1	1	186-1-10828	MULTI-LOK ASSEMBLY	DIN M12 TAP - 50mm GRID	5ML1550-41	115mm TALL RISER
2	1	185-2-10037	HARDWARE KIT	PALLET PLATE TO PALLET	MOD BP	(4) M12X30 SHCS W/ PLUGS
4	1	185-0-10002	KIT	TOOLS	5ML15-41	STANDARD
5	1	185-0-10006	PACKAGING	SHIPPING CONTAINER	HMC WORK PKG.	36x36x30 [M16 W/8" BOLTS]
6	1	185-2-10028	KIT	PILOT PLUG	MODULAR BASEPLATE	CUSTOM 50mm, 50mm LONG



MATERIAL: NA	UNSPECIFIED TOLERANCES: X ±0.2 X.X ±0.1 X.XX ±0.05 ANGLES ±0.5° ALL DIMENSIONS ARE MILLIMETERS.	 (800) 332-4425 (724) 772-1644 www.ChickWorkholding.com	ITEM: WORK PKG - HMC		REV A
HARDNESS: NA			TYPE: DECKEL MAHO DMC 70H duoBLOCK_M-C		
COATING: NA			FAM: 5ML1550-41		
WEIGHT: 140400 g			STYLE: 250 SQ BASE X 650 TALL		
COMMENTS:			UNSPECIFIED EDGES: BREAK 0.3 TO 0.8 UNSPECIFIED FILLETS: RADIUS 0.3 MAX		



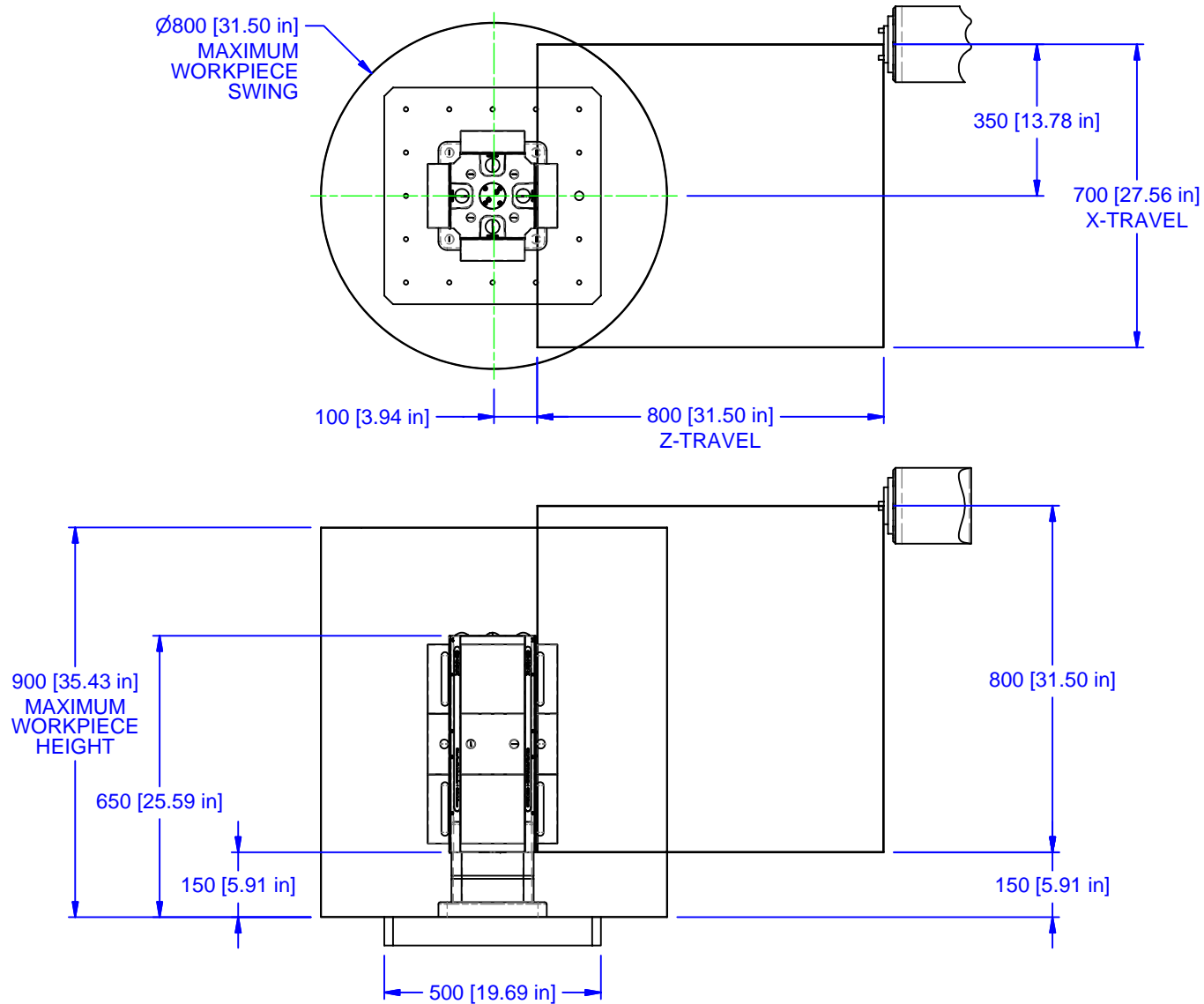
SECTION A-A


MATERIAL:	NA
HARDNESS:	NA
COATING:	NA
WEIGHT:	140400 g
COMMENTS:	

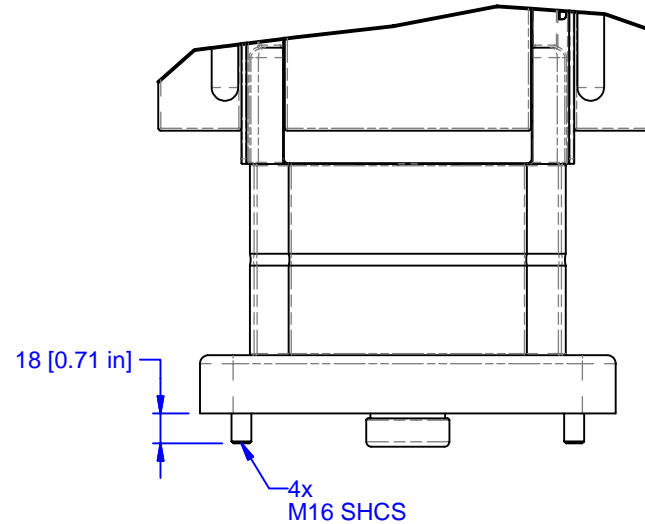
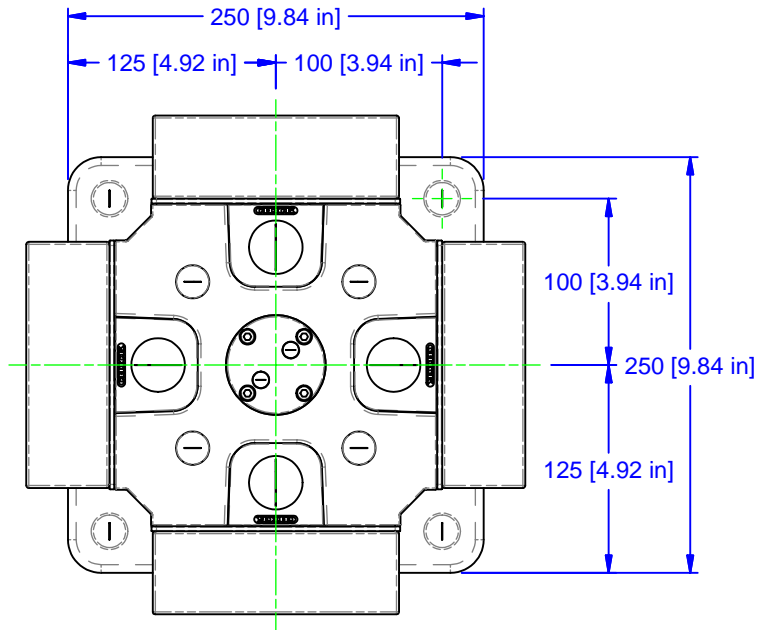
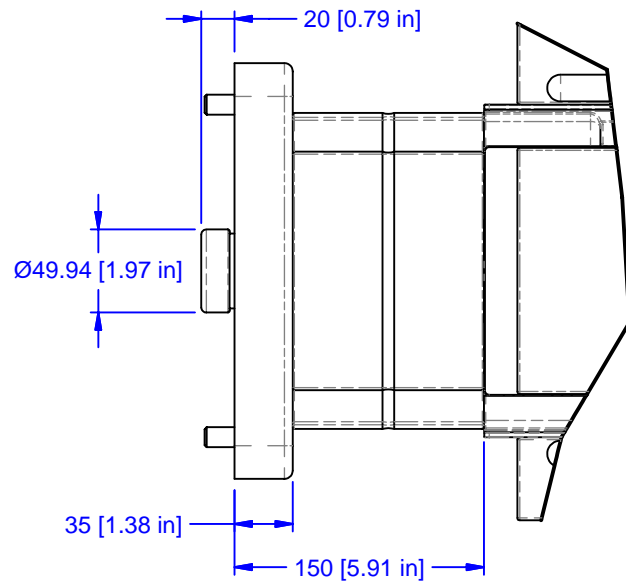
UNSPECIFIED TOLERANCES:	
X	±0.2
X.X	±0.1
X.XX	±0.05
ANGLES	±0.5°
ALL DIMENSIONS ARE MILLIMETERS.	


 (800) 332-4425
 (724) 772-1644
www.ChickWorkholding.com
 UNSPECIFIED EDGES: BREAK 0.3 TO 0.8
 UNSPECIFIED FILLETS: RADIUS 0.3 MAX

ITEM:	WORK PKG - HMC		
TYPE:	DECKEL MAHO DMC 70H duoBLOCK_M-C		
FAM:	5ML1550-41		
STYLE:	250 SQ BASE X 650 TALL		
BCE	2 OF 4	5HP-DECK-00031	REV A
3/18/2008			



MATERIAL: NA	UNSPECIFIED TOLERANCES: X ±0.2 X.X ±0.1 X.XX ±0.05 ANGLES ±0.5° ALL DIMENSIONS ARE MILLIMETERS.	 (800) 332-4425 (724) 772-1644 www.ChickWorkholding.com	ITEM: WORK PKG - HMC				
HARDNESS: NA			TYPE: DECKEL MAHO DMC 70H duoBLOCK_M-C				
COATING: NA			FAM: 5ML1550-41				
WEIGHT: 140400 g			STYLE: 250 SQ BASE X 650 TALL				
COMMENTS:							
		UNSPECIFIED EDGES: BREAK 0.3 TO 0.8		BCE	3 OF 4	5HP-DECK-00031	REV
		UNSPECIFIED FILLETS: RADIUS 0.3 MAX		3/18/2008			A



MATERIAL:	NA
HARDNESS:	NA
COATING:	NA
WEIGHT:	140400 g
COMMENTS:	

UNSPECIFIED TOLERANCES:	
X	±0.2
X.X	±0.1
X.XX	±0.05
ANGLES	±0.5°
ALL DIMENSIONS ARE MILLIMETERS.	


 (800) 332-4425
 (724) 772-1644
www.ChickWorkholding.com

UNSPECIFIED EDGES: BREAK 0.3 TO 0.8
 UNSPECIFIED FILLETS: RADIUS 0.3 MAX

ITEM:		WORK PKG - HMC	
TYPE:		DECKEL MAHO DMC 70H duoBLOCK_M-C	
FAM:		5ML1550-41	
STYLE:		250 SQ BASE X 650 TALL	
BCE	4 OF 4	5HP-DECK-00031	REV
3/18/2008			A