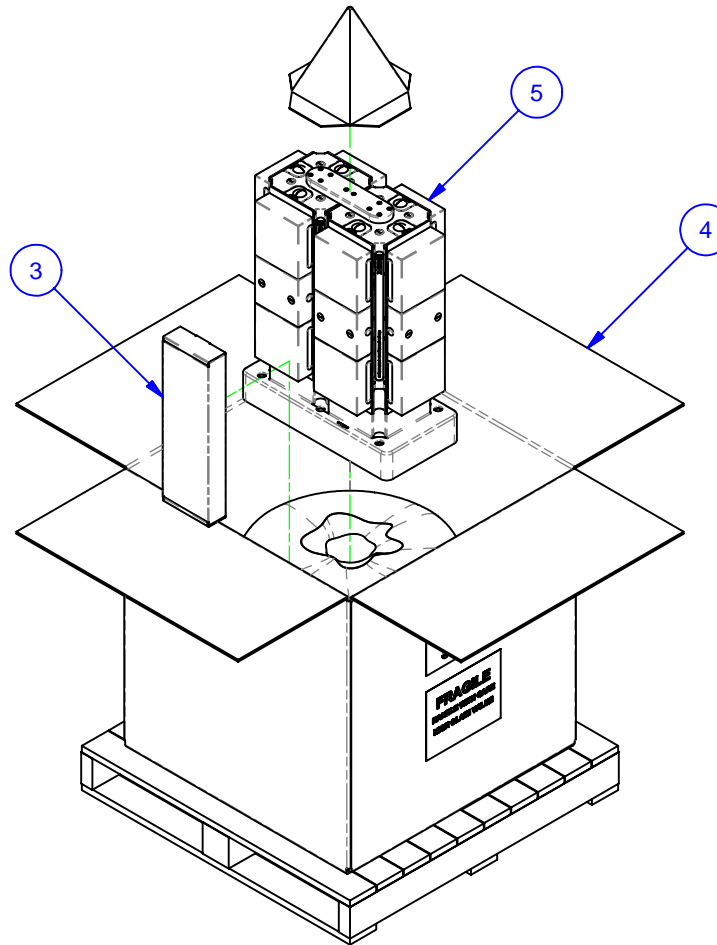


PARTS LIST						
No	QTY	PN	ITEM	TYPE	FAM	STYLE
1	1	058-2-10019	KIT	BASEPLATE PILOT	5 & M	STANDARD 50mm
2	1	058-2-10077	KIT	BASEPLATE MOUNTING	14mm T-SLOT	(6) M12 X 80 SHCS
3	1	185-0-10002	KIT	TOOLS	5ML15-41	STANDARD
4	1	185-0-10005	PACKAGING	SHIPPING CONTAINER	HMC WORK PKG.	36x36x30 [M12 W/8" BOLTS]
5	1	188-1-10092	MULTI-LOK ASSEMBLY	DECKEL MAHO DMC 80 U (METRIC)	5ML1550-41-12	500 X 250 BASE X 650 TALL

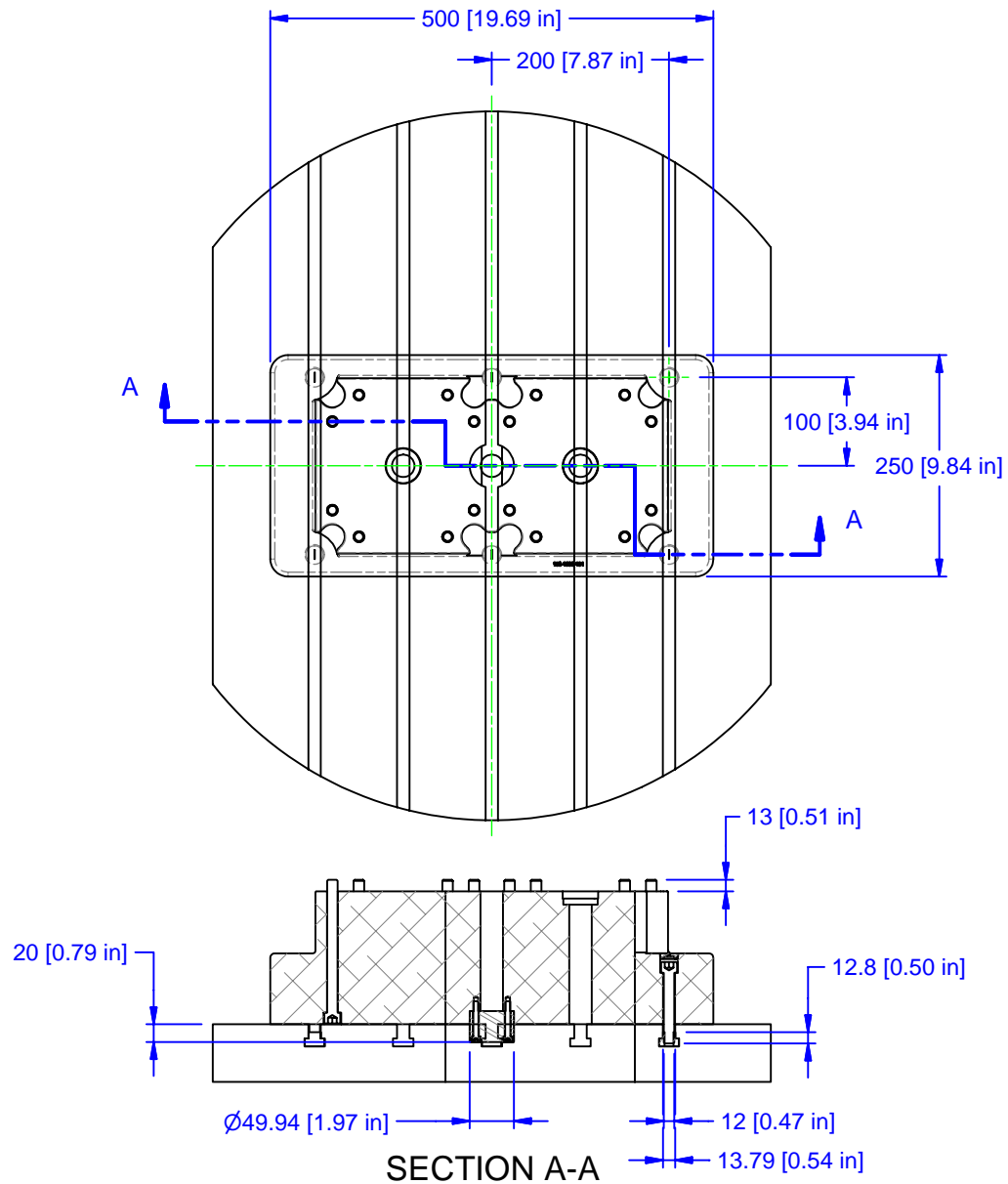


MATERIAL: NA
HARDNESS: NA
COATING: NA
WEIGHT: 234726 g
COMMENTS:

UNSPECIFIED TOLERANCES:
 X ±0.2
 X.X ±0.1
 X.XX ±0.05
 ANGLES ±0.5°
 ALL DIMENSIONS ARE MILLIMETERS.

CHICK (800) 332-4425
 (724) 772-1644
www.ChickWorkholding.com
 UNSPECIFIED EDGES: BREAK 0.3 TO 0.8
 UNSPECIFIED FILLETS: RADIUS 0.3 MAX

ITEM: WORK PKG - HMC			
TYPE: DECKEL MAHO DMC 80 U_T			
FAM: 5ML1550-41-12			
STYLE: 500 X 250 BASE X 650 TALL			
TDD	1 OF 4	5HP-DECK-00120	REV
8/7/2009			A



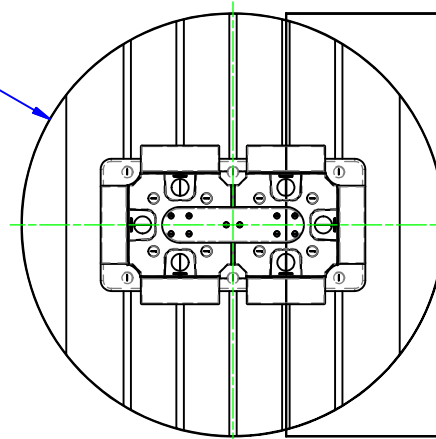
MATERIAL:	NA
HARDNESS:	NA
COATING:	NA
WEIGHT:	234726 g
COMMENTS:	

UNSPECIFIED TOLERANCES:
 X ±0.2
 X.X ±0.1
 X.XX ±0.05
 ANGLES ±0.5°
 ALL DIMENSIONS ARE MILLIMETERS.

CHICK (800) 332-4425
 (724) 772-1644
www.ChickWorkholding.com
 UNSPECIFIED EDGES: BREAK 0.3 TO 0.8
 UNSPECIFIED FILLETS: RADIUS 0.3 MAX

ITEM: WORK PKG - HMC			
TYPE: DECKEL MAHO DMC 80 U_T			
FAM: 5ML1550-41-12			
STYLE: 500 X 250 BASE X 650 TALL			
TDD	2 OF 4	5HP-DECK-00120	REV A
8/7/2009			

Ø800 [31.50 in]
MAXIMUM
WORKPIECE
SWING



400 [15.75 in]

800 [31.50 in]
X-TRAVEL

100 [3.94 in]

800 [31.50 in]
Z-TRAVEL

890 [35.04 in]
MAXIMUM
WORKPIECE
HEIGHT

650 [25.59 in]

150 [5.91 in]

799 [31.46 in]
Y-TRAVEL

90 [3.54 in]

630 [24.80 in]

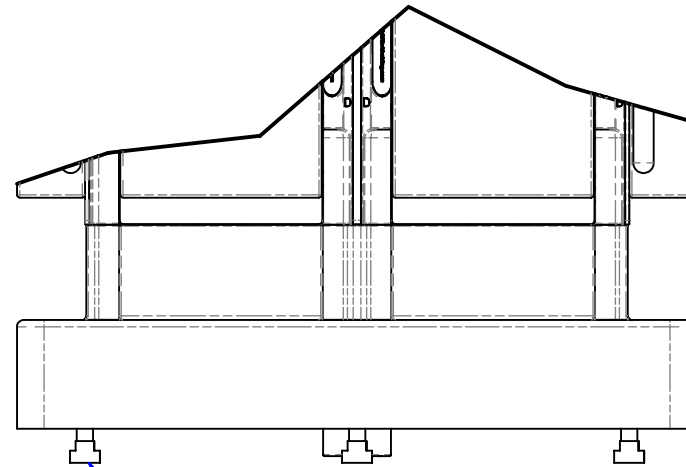
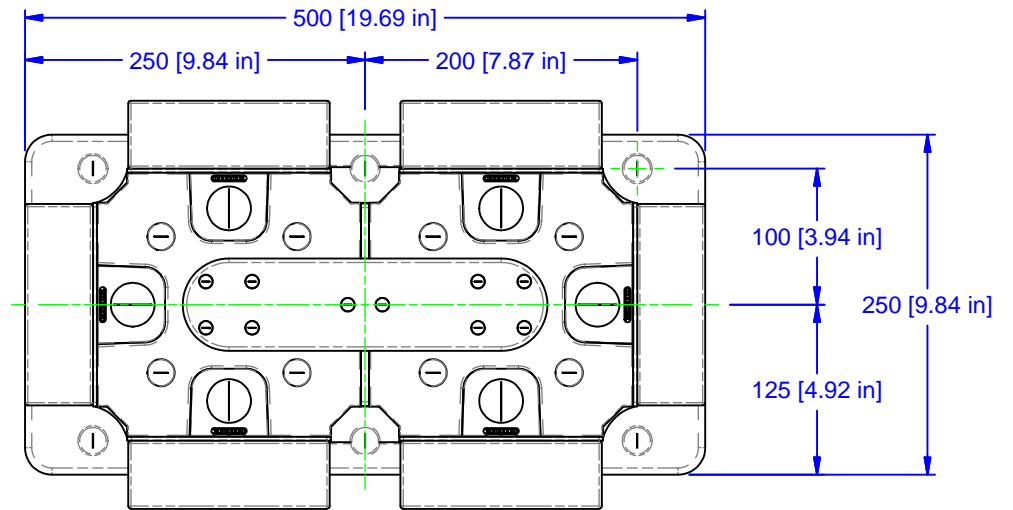
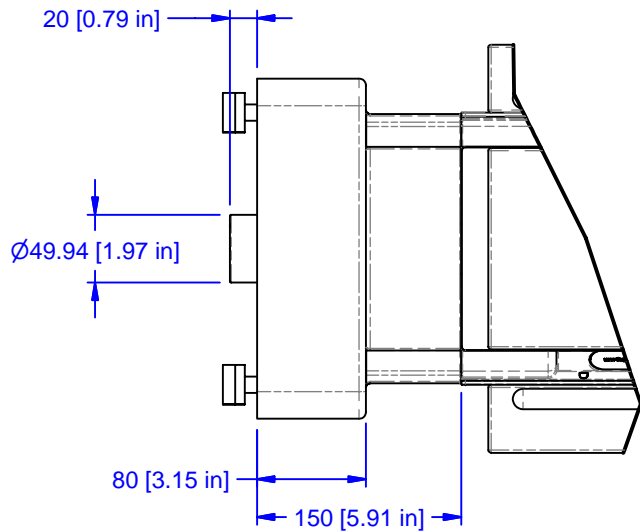
MATERIAL:	NA
HARDNESS:	NA
COATING:	NA
WEIGHT:	234726 g
COMMENTS:	

UNSPECIFIED TOLERANCES:
 X ±0.2
 X.X ±0.1
 X.XX ±0.05
 ANGLES ±0.5°
 ALL DIMENSIONS ARE MILLIMETERS.

CHICK (800) 332-4425
 (724) 772-1644
www.ChickWorkholding.com

UNSPECIFIED EDGES: BREAK 0.3 TO 0.8
 UNSPECIFIED FILLETS: RADIUS 0.3 MAX

ITEM: WORK PKG - HMC			
TYPE: DECKEL MAHO DMC 80 U_T			
FAM: 5ML1550-41-12			
STYLE: 500 X 250 BASE X 650 TALL			
TDD	3 OF 4	5HP-DECK-00120	REV
8/7/2009			A



6x
M12 SHCS / 14mm T-NUT

MATERIAL: NA
HARDNESS: NA
COATING: NA
WEIGHT: 234726 g
COMMENTS:

UNSPECIFIED TOLERANCES:
 X ±0.2
 X.X ±0.1
 X.XX ±0.05
 ANGLES ±0.5°
 ALL DIMENSIONS ARE MILLIMETERS.

CHICK (800) 332-4425
 (724) 772-1644
www.ChickWorkholding.com

UNSPECIFIED EDGES: BREAK 0.3 TO 0.8
 UNSPECIFIED FILLETS: RADIUS 0.3 MAX

ITEM: WORK PKG - HMC		REV A
TYPE: DECKEL MAHO DMC 80 U_T		
FAM: 5ML1550-41-12		5HP-DECK-00120
STYLE: 500 X 250 BASE X 650 TALL		
TDD 8/7/2009	4 OF 4	