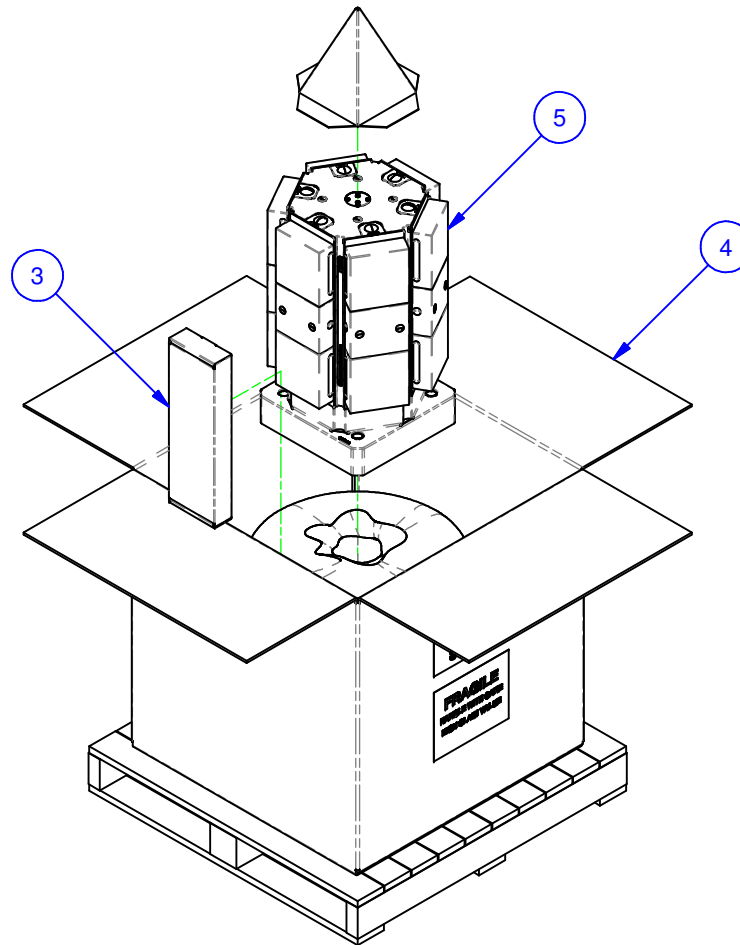

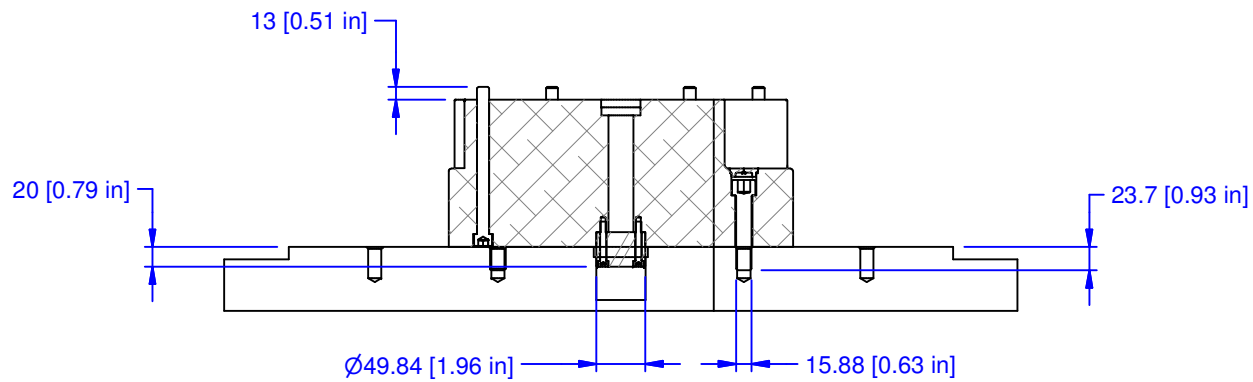
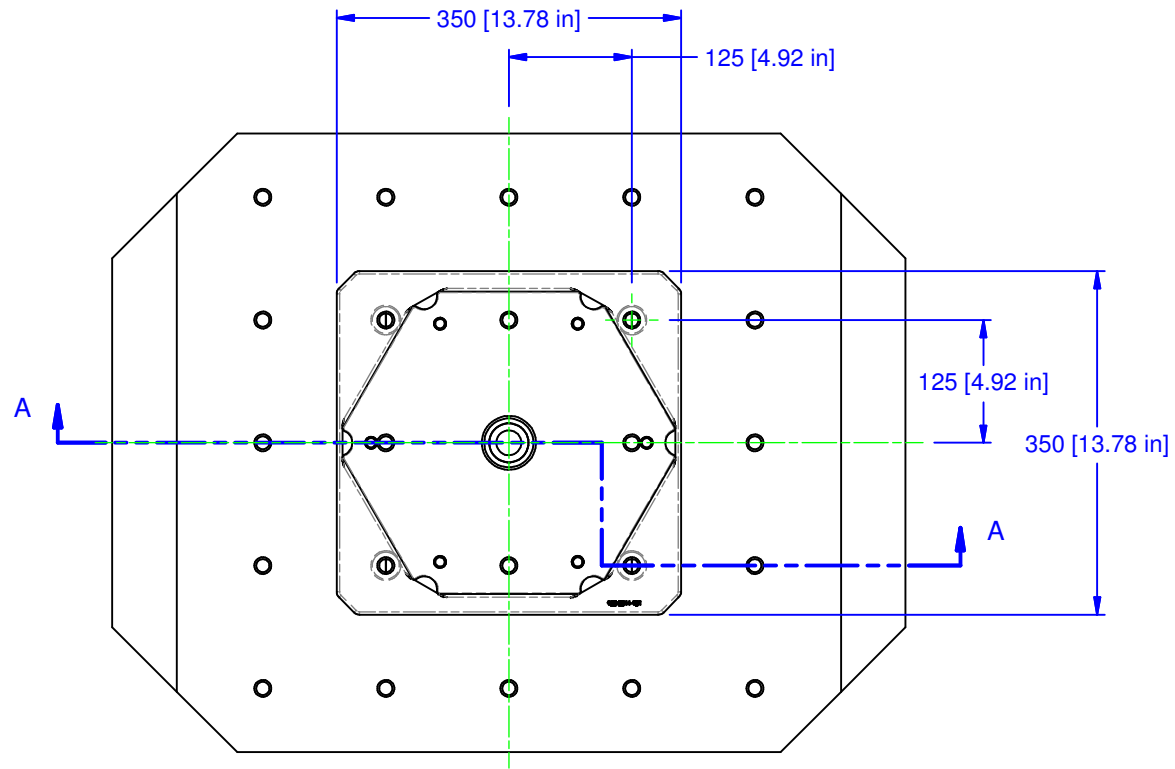


PARTS LIST						
No	QTY	PN	ITEM	TYPE	FAM	STYLE
1	1	058-2-10019	KIT	BASEPLATE PILOT	5 & M	STANDARD 50mm
2	1	058-2-10209	KIT	BASEPLATE MOUNTING	5/8-11 TAPPED HOLE	(4) 5/8-11 SHCS / 28mm PLUGS
3	1	185-0-10002	KIT	TOOLS	5ML15-41	STANDARD
4	1	185-0-10006	PACKAGING	SHIPPING CONTAINER	HMC WORK PKG.	36x36x30 [M16 W/8" BOLTS]
5	1	188-1-10105	MULTI-LOK ASSEMBLY	HAAS EC-630_I-(C)	5ML1550-61	350 SQ BASE X 650 TALL



MATERIAL: NA	UNSPECIFIED TOLERANCES: X ±0.2 X.X ±0.1 X.XX ±0.05 ANGLES ±0.5° ALL DIMENSIONS ARE MILLIMETERS.	 (800) 332-4425 (724) 772-1644 www.ChickWorkholding.com	ITEM: WORK PKG - HMC	TDD 1 OF 4 REV 10/15/2010 SHP-HAAS-00248 A
HARDNESS: NA			TYPE: HAAS EC-630_I-(C)	
COATING: NA			FAM: 5ML1550-61	
WEIGHT: 249249 g			STYLE: 350 SQ BASE X 650 TALL	
COMMENTS:	UNSPECIFIED EDGES: BREAK 0.3 TO 0.8 UNSPECIFIED FILLETS: RADIUS 0.3 MAX			



SECTION A-A

MATERIAL: NA
HARDNESS: NA
COATING: NA
WEIGHT: 249249 g
COMMENTS:

UNSPECIFIED TOLERANCES:

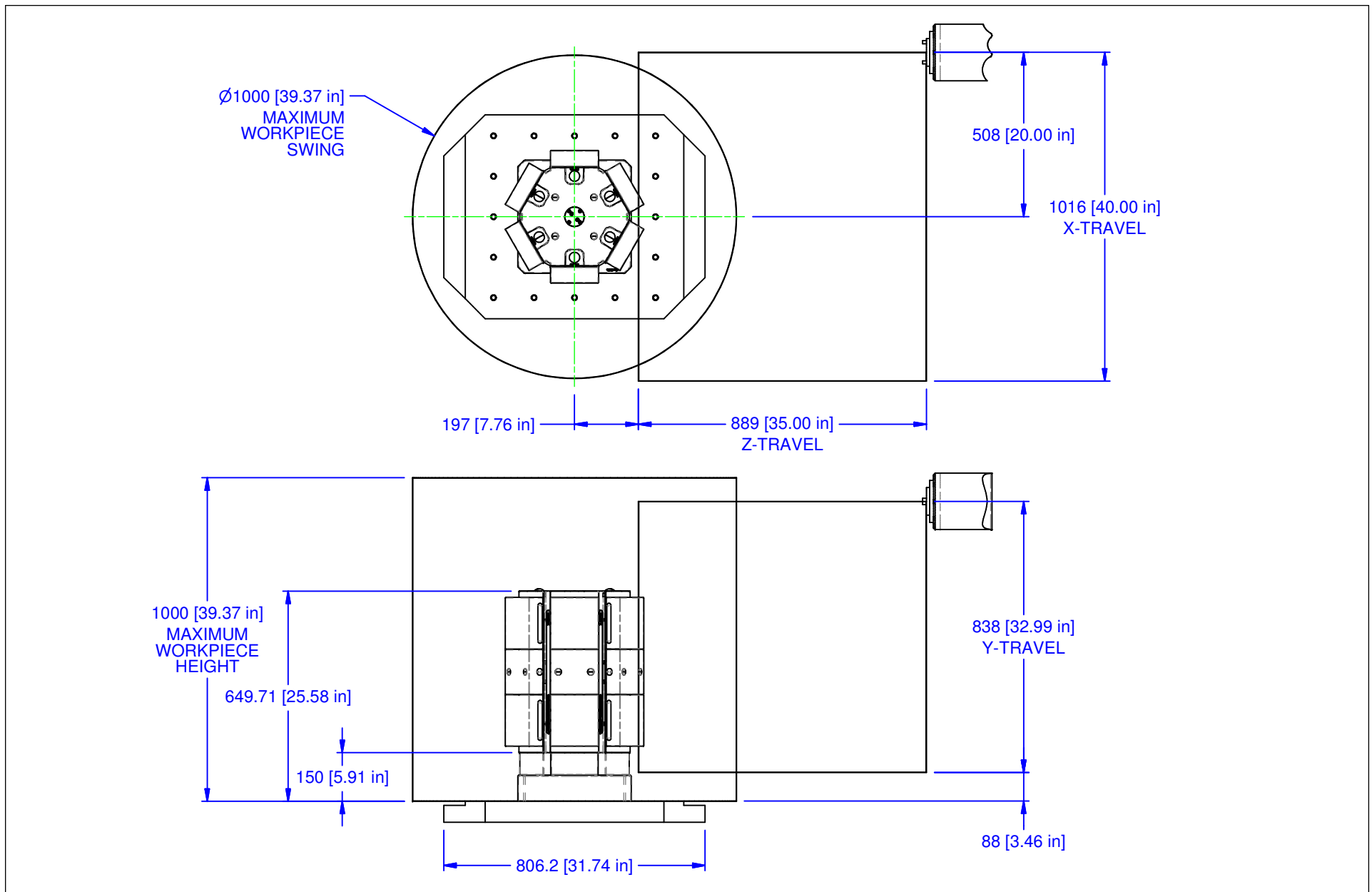
X	±0.2
X.X	±0.1
X.XX	±0.05
ANGLES	±0.5°


ALL DIMENSIONS ARE MILLIMETERS.

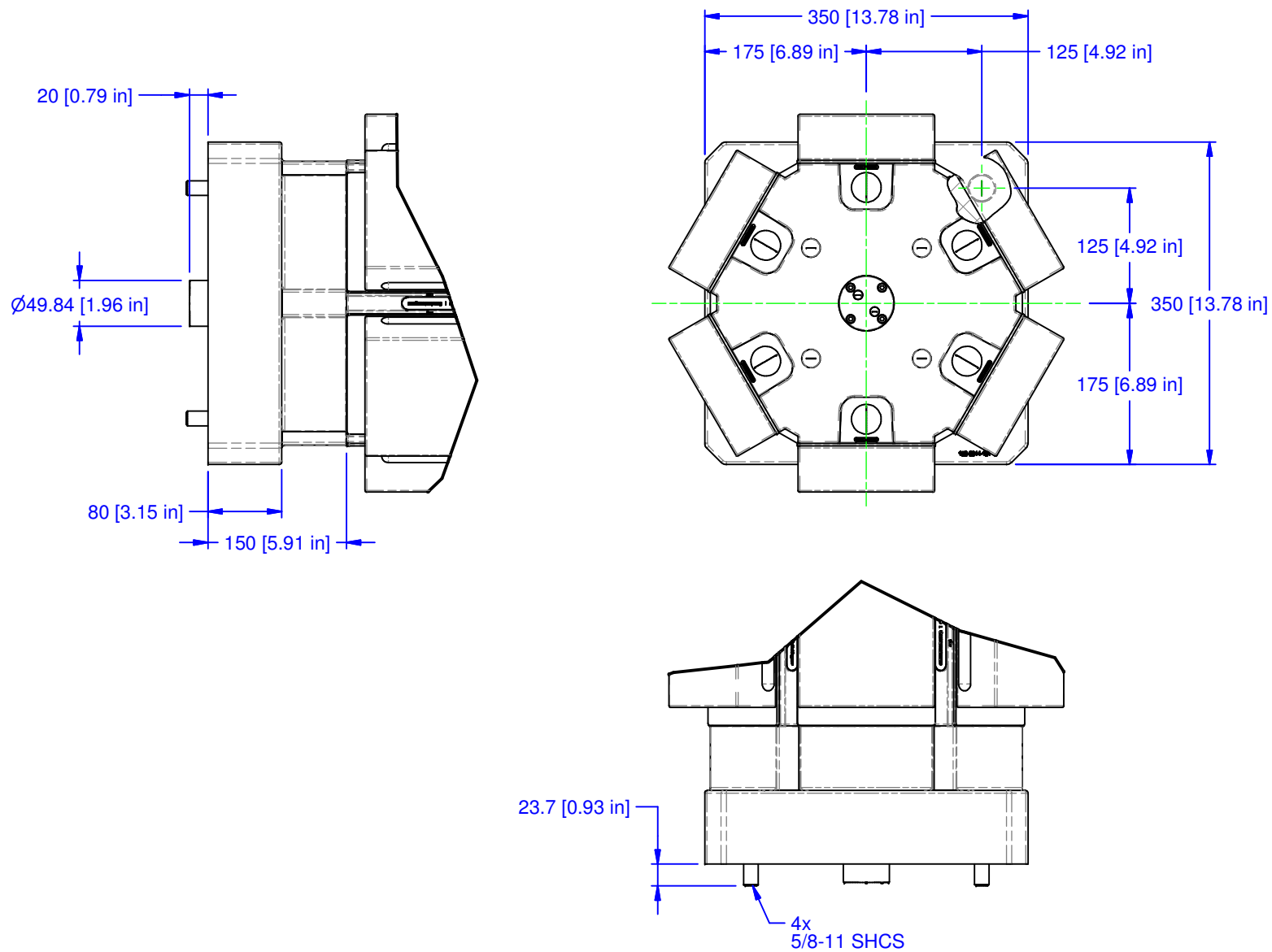
CHICK (800) 332-4425
 (724) 772-1644
www.ChickWorkholding.com


UNSPECIFIED EDGES: BREAK 0.3 TO 0.8
 UNSPECIFIED FILLETS: RADIUS 0.3 MAX

ITEM: WORK PKG - HMC		REV A
TYPE: HAAS EC-630_I-(C)		
FAM: 5ML1550-61		SHP-HAAS-00248
STYLE: 350 SQ BASE X 650 TALL		
TDD	2 OF 4	
10/15/2010		



MATERIAL: NA	UNSPECIFIED TOLERANCES: X ±0.2 X.X ±0.1 X.XX ±0.05 ANGLES ±0.5° ALL DIMENSIONS ARE MILLIMETERS.	 CHICK (800) 332-4425 (724) 772-1644 www.ChickWorkholding.com	ITEM: WORK PKG - HMC			
HARDNESS: NA			TYPE: HAAS EC-630_I-(C)			
COATING: NA			FAM: 5ML1550-61			
WEIGHT: 249249 g			STYLE: 350 SQ BASE X 650 TALL			
COMMENTS:			TDD	3 OF 4	SHP-HAAS-00248	REV A
			10/15/2010			



MATERIAL: NA	UNSPECIFIED TOLERANCES: X ± 0.2 X.X ± 0.1 X.XX ± 0.05 ANGLES $\pm 0.5^\circ$ ALL DIMENSIONS ARE MILLIMETERS.	 (800) 332-4425 (724) 772-1644 www.ChickWorkholding.com	ITEM: WORK PKG - HMC	TDD 4 OF 4 10/15/2010	REV A
HARDNESS: NA			TYPE: HAAS EC-630_I-(C)		
COATING: NA			FAM: 5ML1550-61		
WEIGHT: 249249 g			STYLE: 350 SQ BASE X 650 TALL		
COMMENTS:	UNSPECIFIED EDGES: BREAK 0.3 TO 0.8	UNSPECIFIED FILLETS: RADIUS 0.3 MAX	SHP-HAAS-00248		