

5HP-HAAS-00298

This workholding package is designed for your HAAS EC-500 machining center.



Workholding package



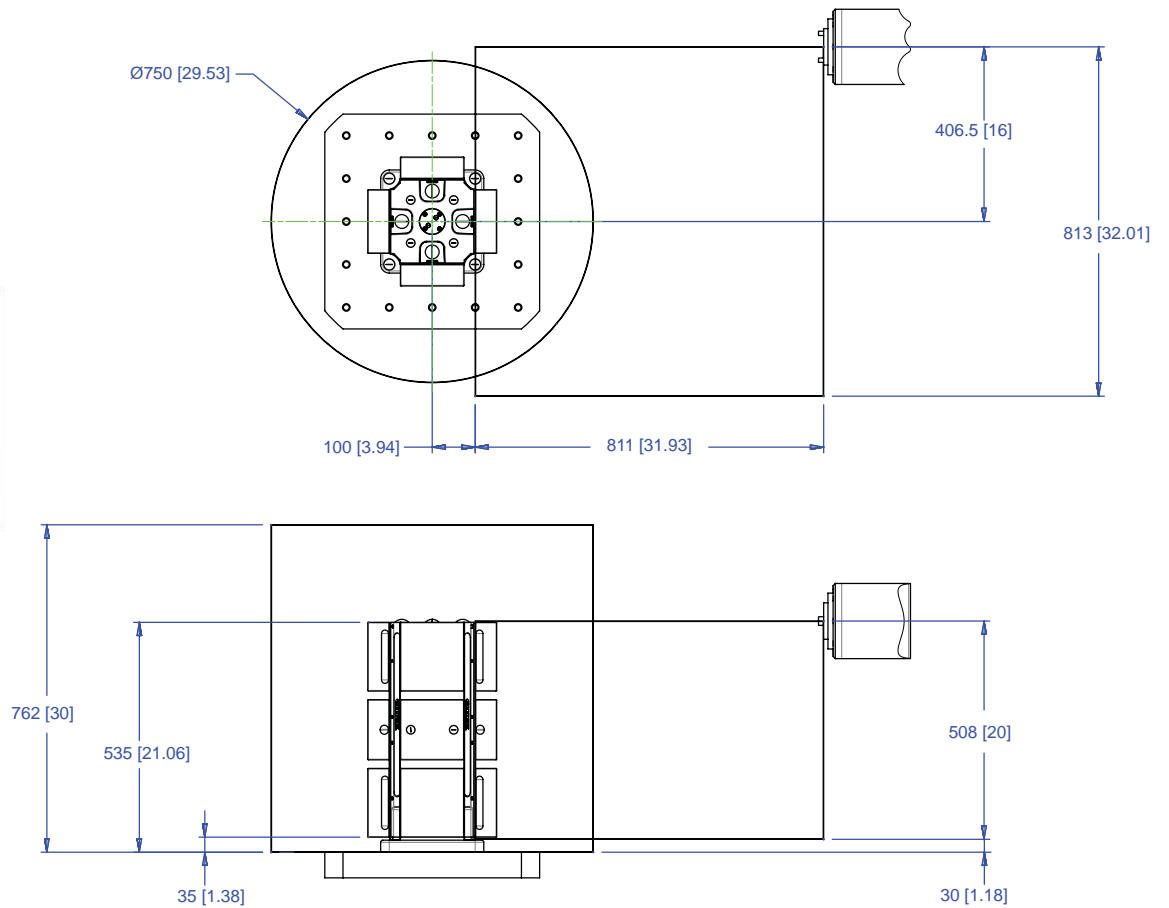
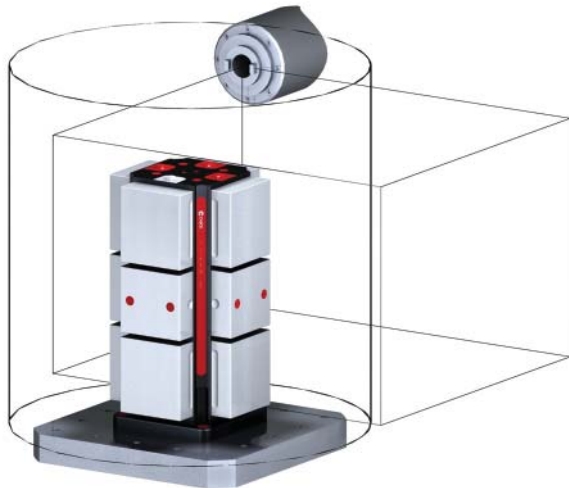
Workholding package
in machine envelope

Notes

CHICK WORKHOLDING SOLUTIONS, INC.
500 Keystone Drive • Warrendale, PA 15086 USA
Phone: (724) 772-1644 • Fax: (724) 772-1633
www.ChickWorkholding.com

5HP-HAAS-00298

This workholding package is designed for your HAAS EC-500 machining center.



Notes

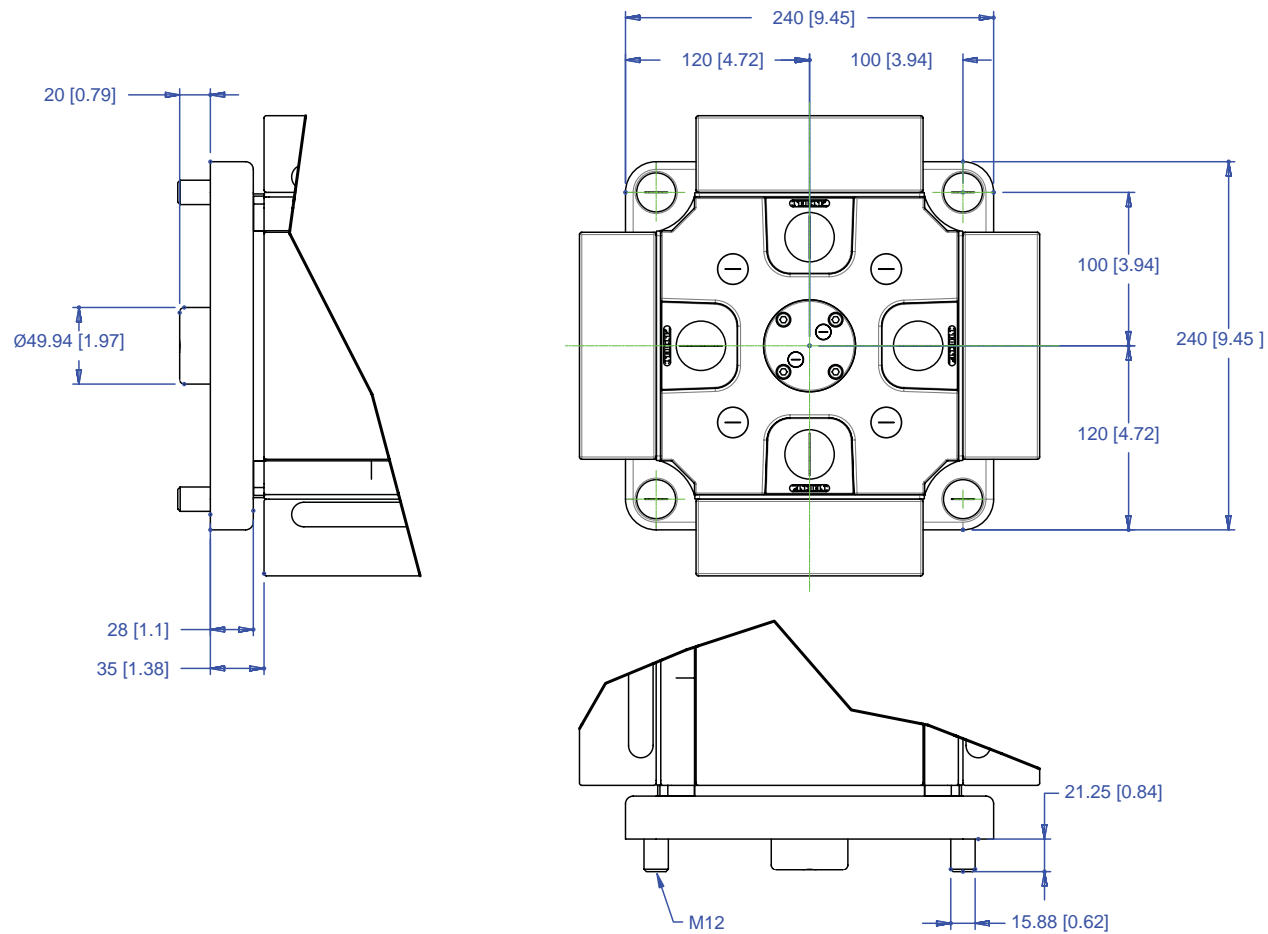
Machine travel may be limited by mechanical interference and/or machine safety zones. Please consult your machine's operating instructions for more information.

All dimensions are MM [IN]

CHICK WORKHOLDING SOLUTIONS, INC.
 500 Keystone Drive • Warrendale, PA 15086 USA
 Phone: (724) 772-1644 • Fax: (724) 772-1633
www.ChickWorkholding.com

5HP-HAAS-00298

This workholding package is designed for your HAAS EC-500 machining center.



Notes

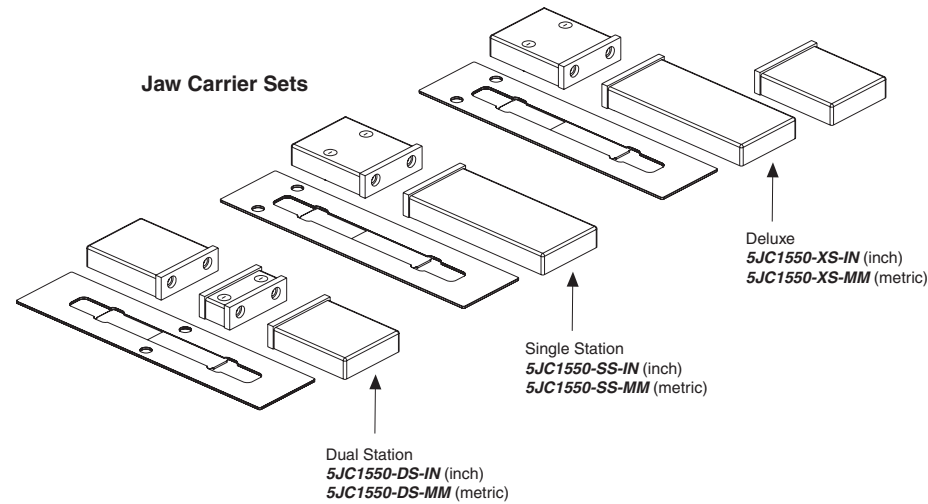
All dimensions are MM [IN]

CHICK WORKHOLDING SOLUTIONS, INC.
 500 Keystone Drive • Warrendale, PA 15086 USA
 Phone: (724) 772-1644 • Fax: (724) 772-1633
www.ChickWorkholding.com

One-Off Workholding

Jaw carriers broaden your modern workholding flexibility by offering vise-like fixturing.

Simply QwikChange™ the jaws and your modern workholding is ready for one-off workholding needs.



Notes

CHICK WORKHOLDING SOLUTIONS, INC.
 500 Keystone Drive • Warrendale, PA 15086 USA
 Phone: (724) 772-1644 • Fax: (724) 772-1633
www.ChickWorkholding.com

Batch Production

Machinable accessories are the optimal solution for batch production. They offer QwikChange™ and accurate repeat set ups to optimize the productivity of the machine center.



Notes

Grey item is included with a standard system

CHICK WORKHOLDING SOLUTIONS, INC.
 500 Keystone Drive • Warrendale, PA 15086 USA
 Phone: (724) 772-1644 • Fax: (724) 772-1633
www.ChickWorkholding.com

Dedicated Fixturing

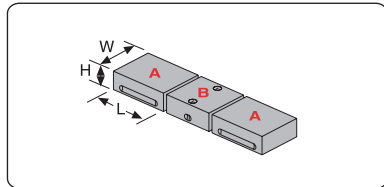
Machinable Faceplates provide QwikChange™ dedicated fixturing and are optimal for awkward or hard to hold parts. A mini pallet changer can be created by utilizing two Faceplates in tandem.



Notes

CHICK WORKHOLDING SOLUTIONS, INC.
 500 Keystone Drive • Warrendale, PA 15086 USA
 Phone: (724) 772-1644 • Fax: (724) 772-1633
www.ChickWorkholding.com

QwikChange Machinable Dual Station Jaws



Individual Dual Station Jaws

Standard

- A** Moveable Jaw **5MJ1550-15-50**
(W148mm, H50mm, L160mm)
- B** Fixed Jaw **5FJ1550-15-50**
(W148mm, H50mm, L120mm)

Wide

- A** Moveable Jaw **5MJ1550-20-50**
(W198mm, H50mm, L160mm)
- B** Fixed Jaw **5FJ1550-20-50**
(W198mm, H50mm, L120mm)

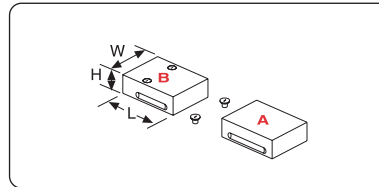
High

- A** Moveable Jaw **5MJ1550-15-70**
(W148mm, H70mm, L160mm)
- B** Fixed Jaw **5FJ1550-15-70**
(W148mm, H70mm, L120mm)

Oversized

- A** Moveable Jaw **5MJ1550-20-70**
(W198mm, H70mm, L160mm)
- B** Fixed Jaw **5FJ1550-20-70**
(W198mm, H70mm, L120mm)

QwikChange Machinable Single Station Jaws



Individual Single Station Jaws

Standard

- A** Moveable Jaw **5MJ1550-15-50**
(W148mm, H50mm, L160mm)
- B** Fixed Jaw **5SJ1550-15-50**
(W148mm, H50mm, L160mm)

Wide

- A** Moveable Jaw **5MJ1550-20-50**
(W198mm, H50mm, L160mm)
- B** Fixed Jaw **5SJ1550-20-50**
(W198mm, H50mm, L160mm)

High

- A** Moveable Jaw **5MJ1550-15-70**
(W148mm, H70mm, L160mm)
- B** Fixed Jaw **5SJ1550-15-70**
(W148mm, H70mm, L160mm)

Oversized

- A** Moveable Jaw **5MJ1550-20-70**
(W198mm, H70mm, L160mm)
- B** Fixed Jaw **5SJ1550-20-70**
(W198mm, H70mm, L160mm)

QwikChange Jaw Carriers



Jaw Carriers (Inch)

- A** 5JC1550-FC-IN
- B** 5JC1550-MC-IN
- C** 5JC1550-SC-IN
- D** 5JC1550-LM-IN
- E** 5JC1550-SM-IN

Jaw Carriers (Metric)

- A** 5JC1550-FC-MM
- B** 5JC1550-MC-MM
- C** 5JC1550-SC-MM
- D** 5JC1550-LM-MM
- E** 5JC1550-SM-MM

- A** Dual Station Fixed
- B** Dual Station Moveable

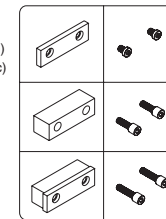
- C** Single Station Fixed
- D** Single Station Long Moveable

- E** Single Station Short Moveable

Jaw Plates

- Standard (Set of 4)
JH6STD (Inch)
MJH15 (Metric)

HARD JAW PLATES



- Standard Mounting Screws: 1/2-13x5/8"
LHCS-500-063-008 (Inch)
LHCS-M10-012-008 (Metric)

- Thick (Set of 2)
JH6THK

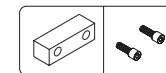
- Thick Mounting Screws: 1/2-13x1.25"
SHCS-500-125-008

- Both Sizes
JH6STD &
JH6THK

- Both Sizes Mounting Screws: 1/2-13x1.75"
SHCS-500-175-008

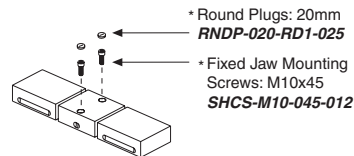
- Standard (Set of 4)
JS6AL

SOFT JAW PLATES



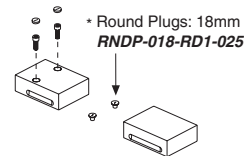
- Soft Mounting Screws: 1/2-13x1.25"
SHCS-500-125-012

Screws and Plugs



* Round Plugs: 20mm
RNDP-020-RD1-025

* Fixed Jaw Mounting Screws: M10x45
SHCS-M10-045-012



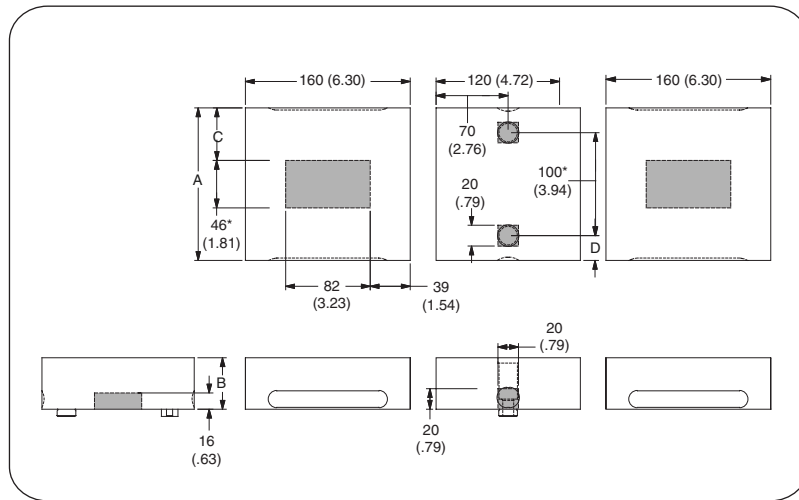
* Round Plugs: 18mm
RNDP-018-RD1-025

Notes

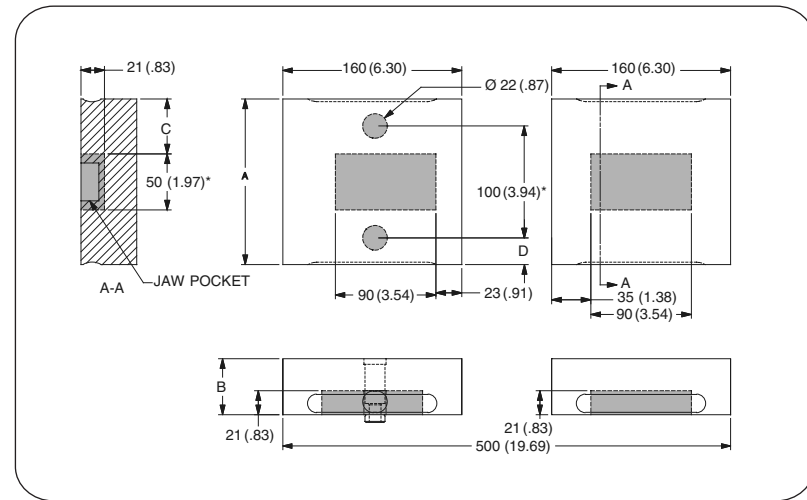
Grey or * item is included with a standard system

CHICK WORKHOLDING SOLUTIONS, INC.
500 Keystone Drive • Warrendale, PA 15086 USA
Phone: (724) 772-1644 • Fax: (724) 772-1633
www.ChickWorkholding.com

Dual Station



Single Station



Item Number	Description	A	B	C	D
5DS1550-15-50	Standard	148 [5.83]	50 [1.97]	51 [2.01]	24 [.94]
5DS1550-15-70	High	148 [5.83]	70 [2.76]	51 [2.01]	24 [.94]
5DS1550-20-50	Wide	198 [7.80]	50 [1.97]	76 [2.99]	49 [1.93]
5DS1550-20-70	Oversized	198 [7.80]	70 [2.76]	76 [2.99]	49 [1.93]

Item Number	Description	A	B	C	D
5SS1550-15-50	Standard	148 [5.83]	50 [1.97]	49 [1.93]	24 [.94]
5SS1550-15-70	High	148 [5.83]	70 [2.76]	49 [1.93]	24 [.94]
5SS1550-20-50	Wide	198 [7.80]	50 [1.97]	74 [2.91]	49 [1.93]
5SS1550-20-70	Oversized	198 [7.80]	70 [2.76]	74 [2.91]	49 [1.93]

Notes

Grey area indicates no cut zone
 All dimensions are MM [IN]
 Dimensions centered on the "A" dimension.

CHICK WORKHOLDING SOLUTIONS, INC.
 500 Keystone Drive • Warrendale, PA 15086 USA
 Phone: (724) 772-1644 • Fax: (724) 772-1633
www.ChickWorkholding.com

Dual Station

Single Station



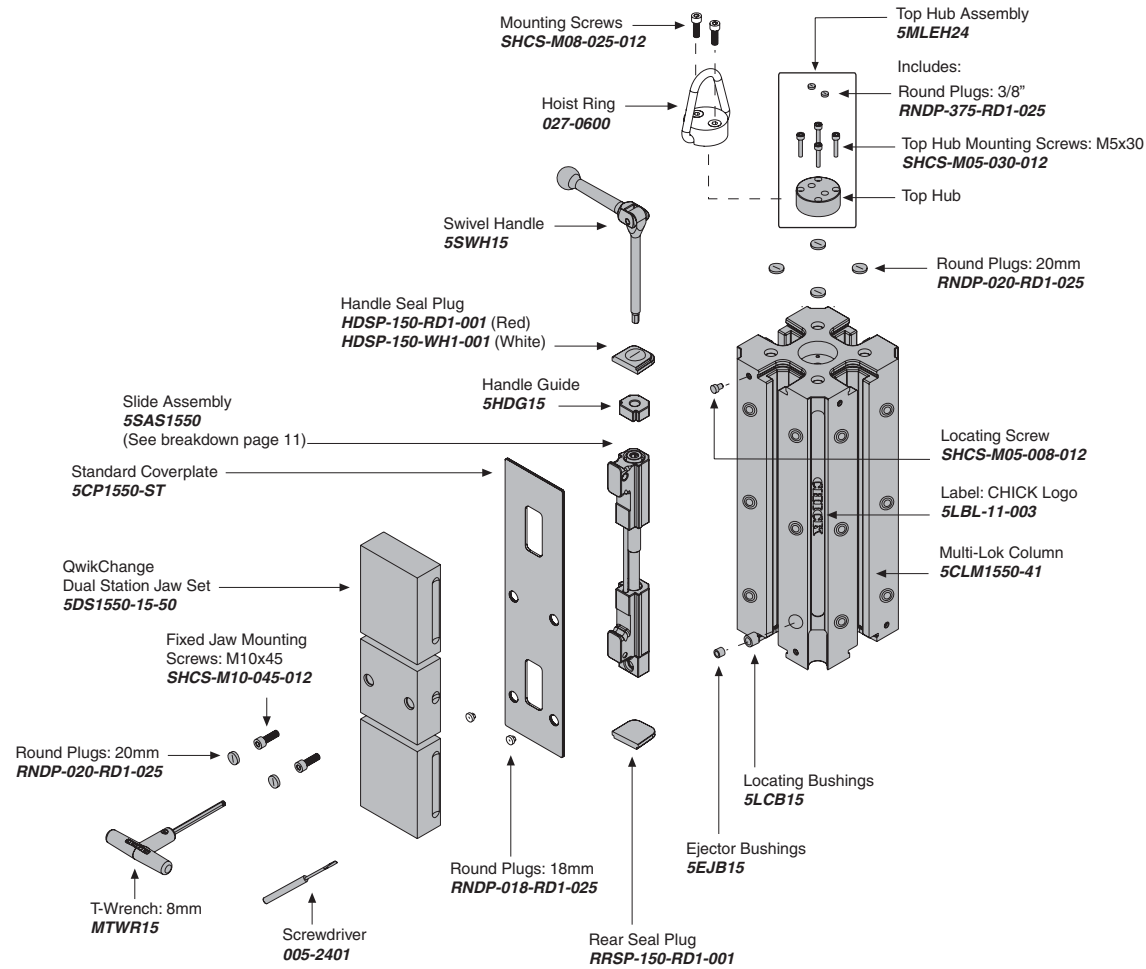
Item Number	Description	A	Jaw Width
5DS1550-15-50	Standard	32 [1.26]	148 [5.83]
5DS1550-15-70	High	52 [2.05]	148 [5.83]
5DS1550-20-50	Wide	32 [1.26]	198 [7.80]
5DS1550-20-70	Oversized	52 [2.05]	198 [7.80]

Item Number	Description	A	Jaw Width
5SS1550-15-50	Standard	29 [1.14]	148 [5.83]
5SS1550-15-70	High	49 [1.93]	148 [5.83]
5SS1550-20-50	Wide	29 [1.14]	198 [7.80]
5SS1550-20-70	Oversized	49 [1.93]	198 [7.80]

Notes

All dimensions are MM [IN]
 Additional closure is available with an Extended Travel Coverplate.
 Contact CHICK for details.

CHICK WORKHOLDING SOLUTIONS, INC.
 500 Keystone Drive • Warrendale, PA 15086 USA
 Phone: (724) 772-1644 • Fax: (724) 772-1633
www.ChickWorkholding.com



Notes

Grey items are included with a standard system
 For QwikChange™ Jaw accessories, see pages 4-7

CHICK WORKHOLDING SOLUTIONS, INC.
 500 Keystone Drive • Warrendale, PA 15086 USA
 Phone: (724) 772-1644 • Fax: (724) 772-1633
 www.ChickWorkholding.com



Notes

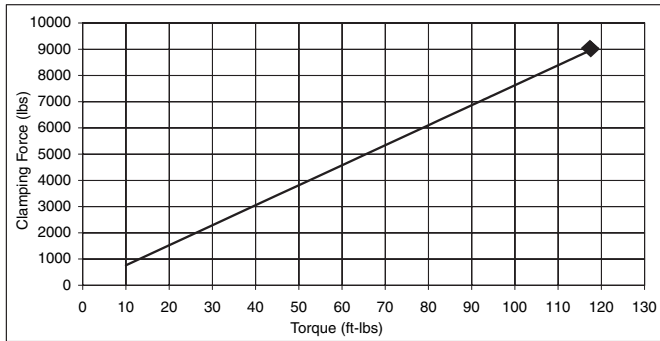
Grey items are included with a standard system

CHICK WORKHOLDING SOLUTIONS, INC.
 500 Keystone Drive • Warrendale, PA 15086 USA
 Phone: (724) 772-1644 • Fax: (724) 772-1633
www.ChickWorkholding.com

Pounds (lbs)

Force	=	Torque	X	Slope
lbs	=	in-lb	x	6.4
lbs	=	ft-lbs	x	76.3

Torque (ft-lb)	Force (lbs)
0	0
10	763
20	1525
30	2288
40	3051
50	3814
60	4576
70	5339
80	6102
90	6864
95	7246
100	7627
105	8008
110	8390
115	8771
118	9000

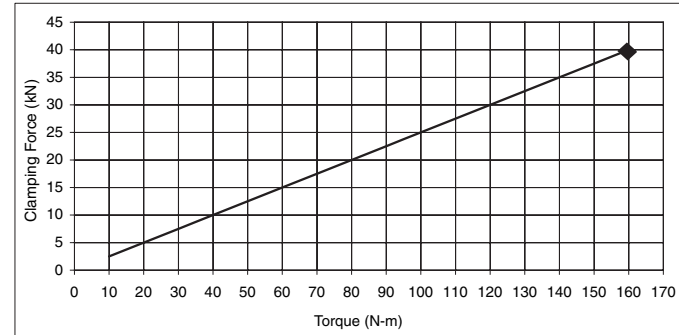


Note: **◆** Maximum Recommended Torque. Actual results may vary.

Kilonewtons (kN)

Force	=	Torque	X	Slope
N	=	N-m	x	250
kN	=	N-m	x	0.25

Torque (N-m)	Force (kN)
0	0.0
10	2.5
20	5.0
30	7.5
40	10.0
50	12.5
60	15.0
70	17.5
80	20.0
90	22.5
100	25.0
110	27.5
120	30.0
130	32.5
140	35.0
150	37.5
160	40.0



Note: **◆** Maximum Recommended Torque. Actual results may vary.

Notes

CHICK WORKHOLDING SOLUTIONS, INC.
 500 Keystone Drive • Warrendale, PA 15086 USA
 Phone: (724) 772-1644 • Fax: (724) 772-1633
www.ChickWorkholding.com