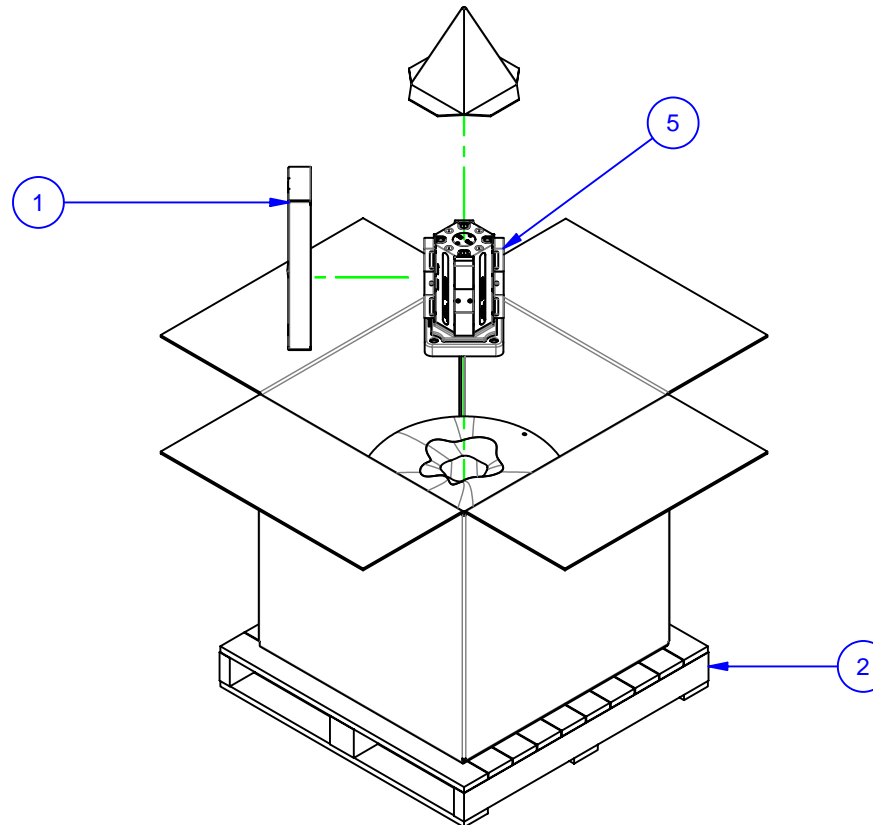
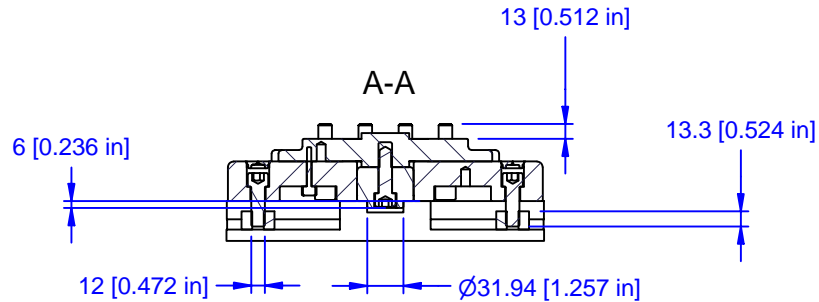
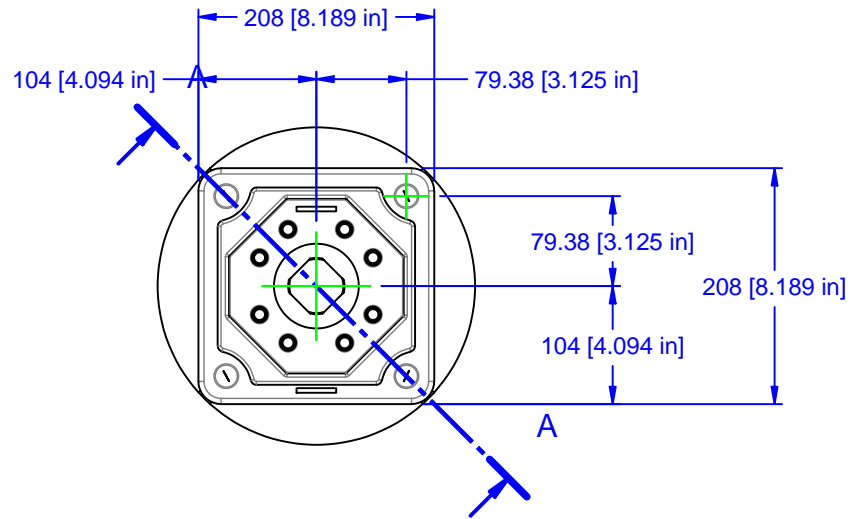


PARTS LIST

No	QTY	PN	ITEM	TYPE	FAM	STYLE
1	1	185-0-10004	KIT	TOOLS	5ML05-41	STANDARD
2	1	185-0-10006	PACKAGING	SHIPPING CONTAINER	HMC WORK PKG.	36" X 36" X 30" - (M12)
3	1	185-2-10026	KIT	PP TO PALLET - MOD BP	MODULAR BASEPLATE	CUSTOM
4	1	185-2-10062	KIT	PILOT	MODULAR BASEPLATE	STANDARD 32mm
5	1	186-1-10067	MULTI-LOK ASSEMBLY	400mm I PARTIAL PALLET	082-4201	20mm TALL RISER



MATERIAL:	UNSPECIFIED TOLERANCES: X ±0.2 X.X ±0.1 X.XX ±0.05 ANGLES ±0.5° ALL DIMENSIONS ARE MILLIMETERS.	CHICK 500 Keystone Drive Warrendale, PA USA (800) 33-CHICK • (724) 772-1644 www.chick-workholding.com	ITEM: WORK PKG - HMC	
HARDNESS: NA			TYPE: HERMLE C20U	
COATING: NA			FAM: 082-4201	
WEIGHT: 48420 g			STYLE: 208 SQ BASE x 305 TALL	
COMMENTS:			TTK 1 OF 4 9/29/2006	5HP-HERM-00006 REV A1



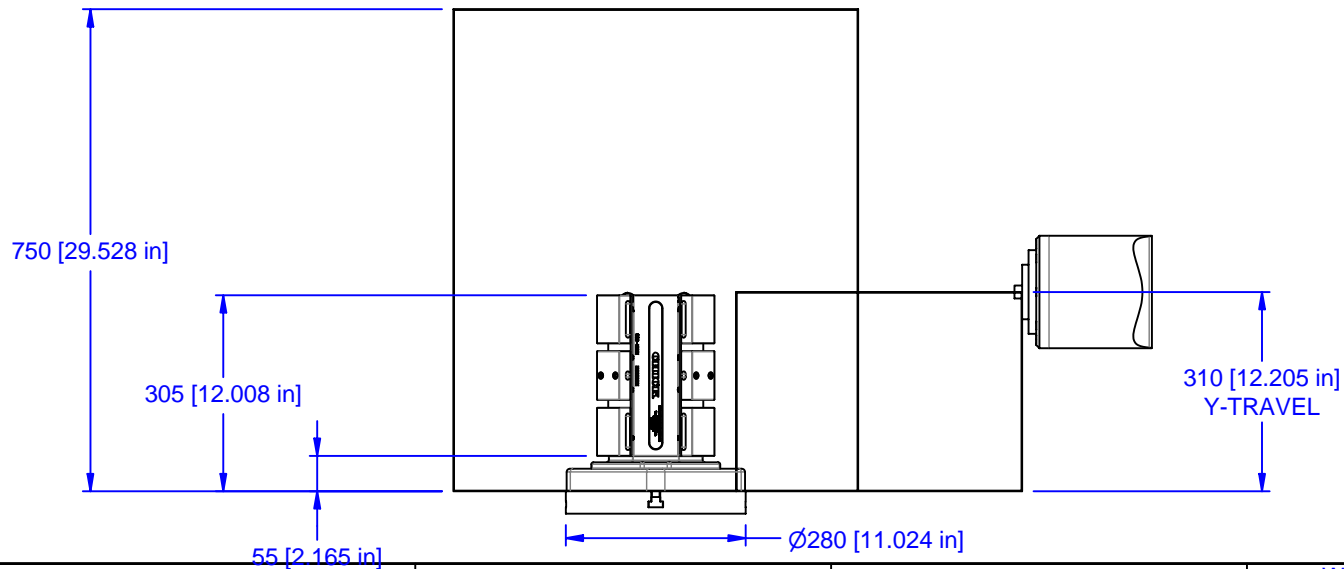
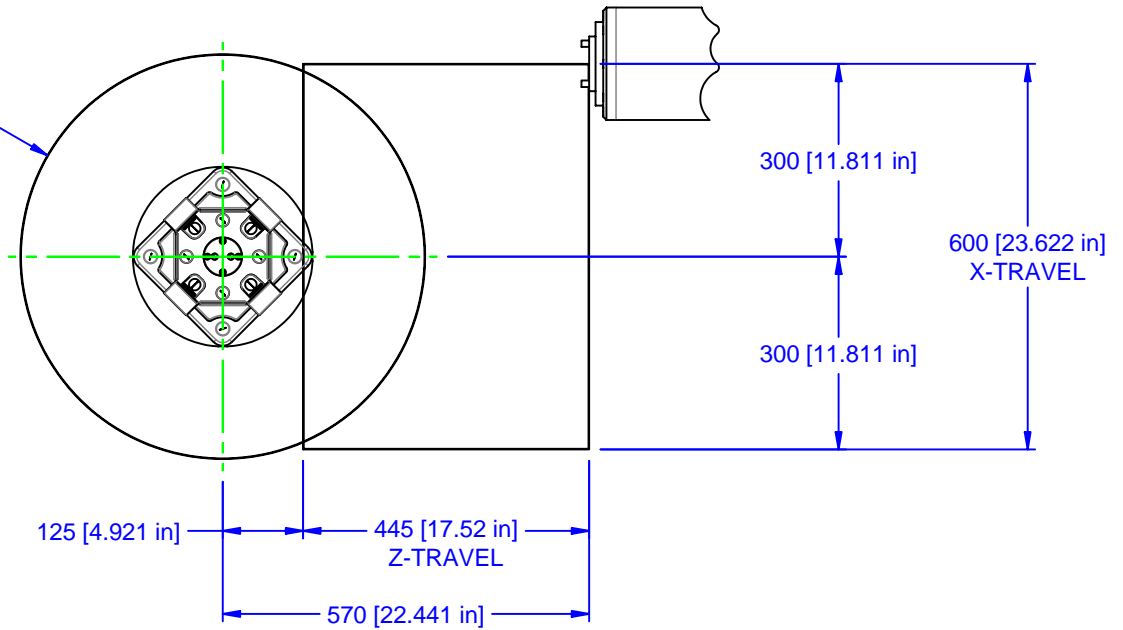
MATERIAL:	
HARDNESS: NA	
COATING: NA	
WEIGHT: 48420 g	
COMMENTS:	

UNSPECIFIED TOLERANCES:
 X ±0.2
 X.X ±0.1
 X.XX ±0.05
 ANGLES ±0.5°
 ALL DIMENSIONS ARE MILLIMETERS.

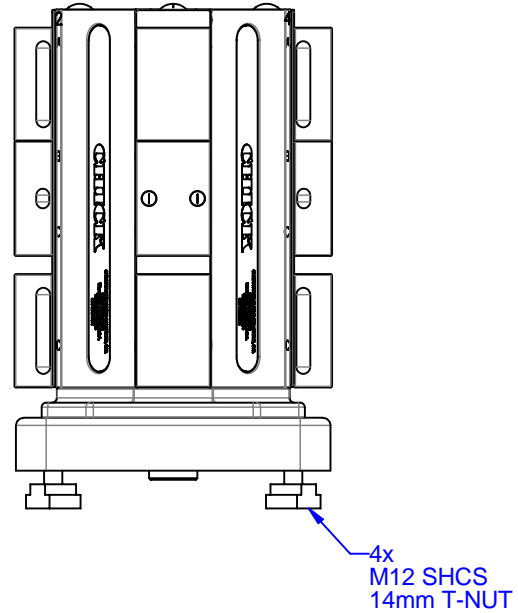
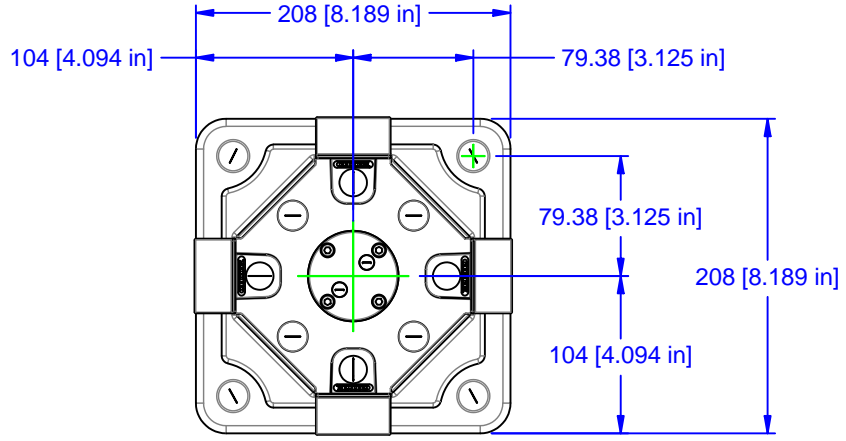
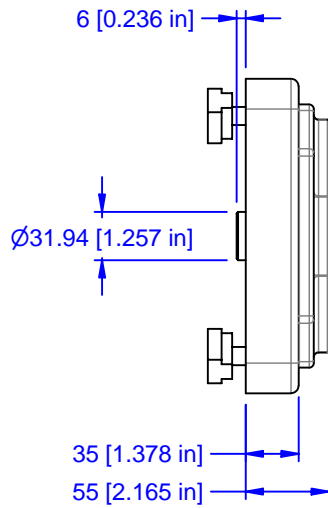
CHICK 500 Keystone Drive
 Warrendale, PA USA
 (800) 33-CHICK • (724) 772-1644
 www.chick-workholding.com
 UNSPECIFIED EDGES: BREAK 0.3 TO 0.8
 UNSPECIFIED FILLETS: RADIUS 0.3 MAX

ITEM: WORK PKG - HMC		
TYPE: HERMLE C20U		
FAM: 082-4201		
STYLE: 208 SQ BASE x 305 TALL		
TTK	2 OF 4	REV
9/29/2006	5HP-HERM-00006	A1

Ø630 [24.803 in]
MAXIMUM SWING
DIAMETER



MATERIAL:	UNSPECIFIED TOLERANCES: X ±0.2 X.X ±0.1 X.XX ±0.05 ANGLES ±0.5° ALL DIMENSIONS ARE MILLIMETERS.	CHICK 500 Keystone Drive Warrendale, PA USA (800) 33-CHICK • (724) 772-1644 www.chick-workholding.com	ITEM: WORK PKG - HMC	
HARDNESS: NA			TYPE: HERMLE C20U	
COATING: NA			FAM: 082-4201	
WEIGHT: 48420 g			STYLE: 208 SQ BASE x 305 TALL	
COMMENTS:			UNSPECIFIED EDGES: BREAK 0.3 TO 0.8 UNSPECIFIED FILLETS: RADIUS 0.3 MAX	TTK 3 OF 4 9/29/2006



MATERIAL:
HARDNESS: NA
COATING: NA
WEIGHT: 48420 g
COMMENTS:

UNSPECIFIED TOLERANCES:
 X ±0.2
 X.X ±0.1
 X.XX ±0.05
 ANGLES ±0.5°
 ALL DIMENSIONS ARE MILLIMETERS.

CHICK 500 Keystone Drive
 Warrendale, PA USA
 (800) 33-CHICK • (724) 772-1644
 www.chick-workholding.com

UNSPECIFIED EDGES: BREAK 0.3 TO 0.8
 UNSPECIFIED FILLETS: RADIUS 0.3 MAX

ITEM: WORK PKG - HMC			
TYPE: HERMLE C20U			
FAM: 082-4201			
STYLE: 208 SQ BASE x 305 TALL			
TTK	4 OF 4	5HP-HERM-00006	REV A1
9/29/2006			