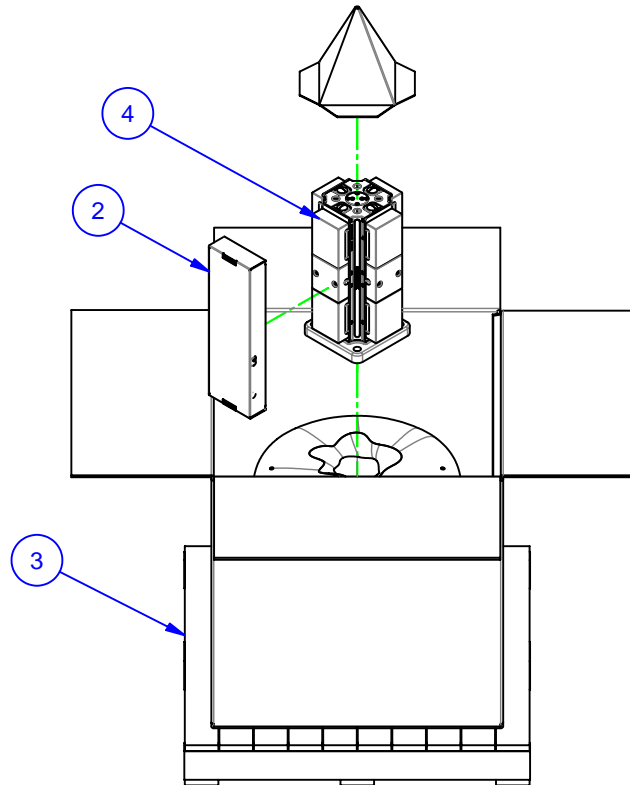


PARTS LIST

No	QTY	PN	ITEM	TYPE	FAM	STYLE
1	1	058-2-10170	KIT	BASEPLATE MOUNTING	14mm T-SLOT	(4) M12 X 35 SHCS
2	1	185-0-10003	KIT	TOOLS	5ML10-41	STANDARD
3	1	185-0-10006	PACKAGING	SHIPPING CONTAINER	HMC WORK PKG.	36" X 36" X 30" - (M12)
4	1	188-1-10068	MULTI-LOK ASSEMBLY	HERMLE C 30 U	5ML1040-41	206 SQ x 435 TALL
5	1	270-2-10086	KIT	h6	PILOT PLUG	32mm



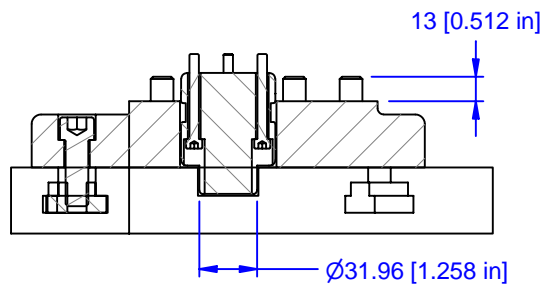
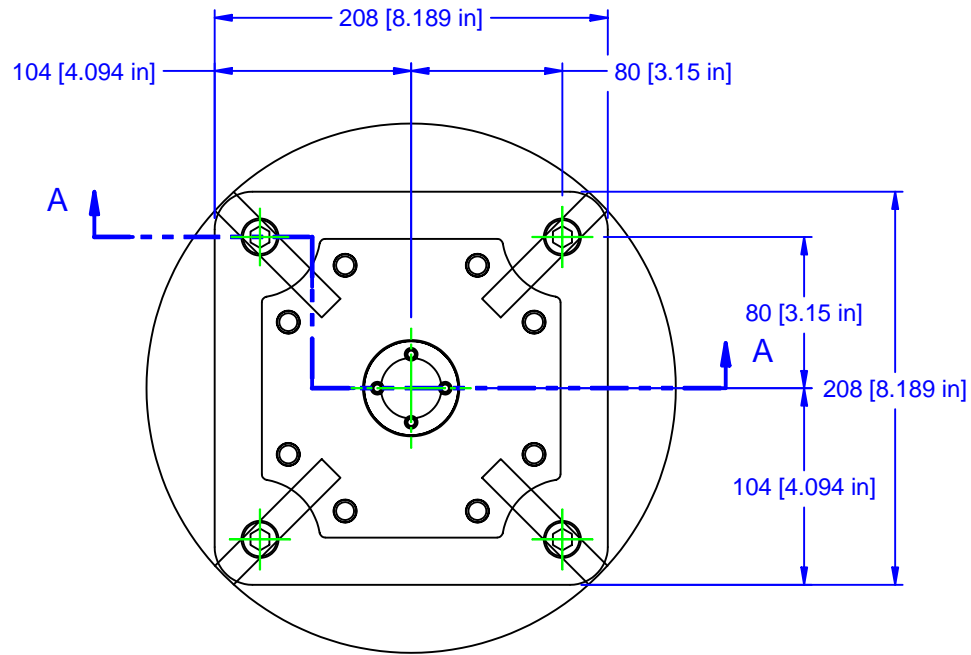
MATERIAL: NA
HARDNESS: NA
COATING: NA
WEIGHT: 75140 g
COMMENTS:

UNSPECIFIED TOLERANCES:
 X ±0.2
 X.X ±0.1
 X.XX ±0.05
 ANGLES ±0.5°
 ALL DIMENSIONS ARE MILLIMETERS.

CHICK (800) 332-4425
 (724) 772-1644
www.ChickWorkholding.com

ITEM: WORK PKG - HMC
TYPE: HERMLE C 30 U
FAM: 5ML1040-41
STYLE: 208 SQ x 435 TALL

TTK	1 OF 4	5HP-HERM-00009	REV A1
7/26/2007			



SECTION A-A

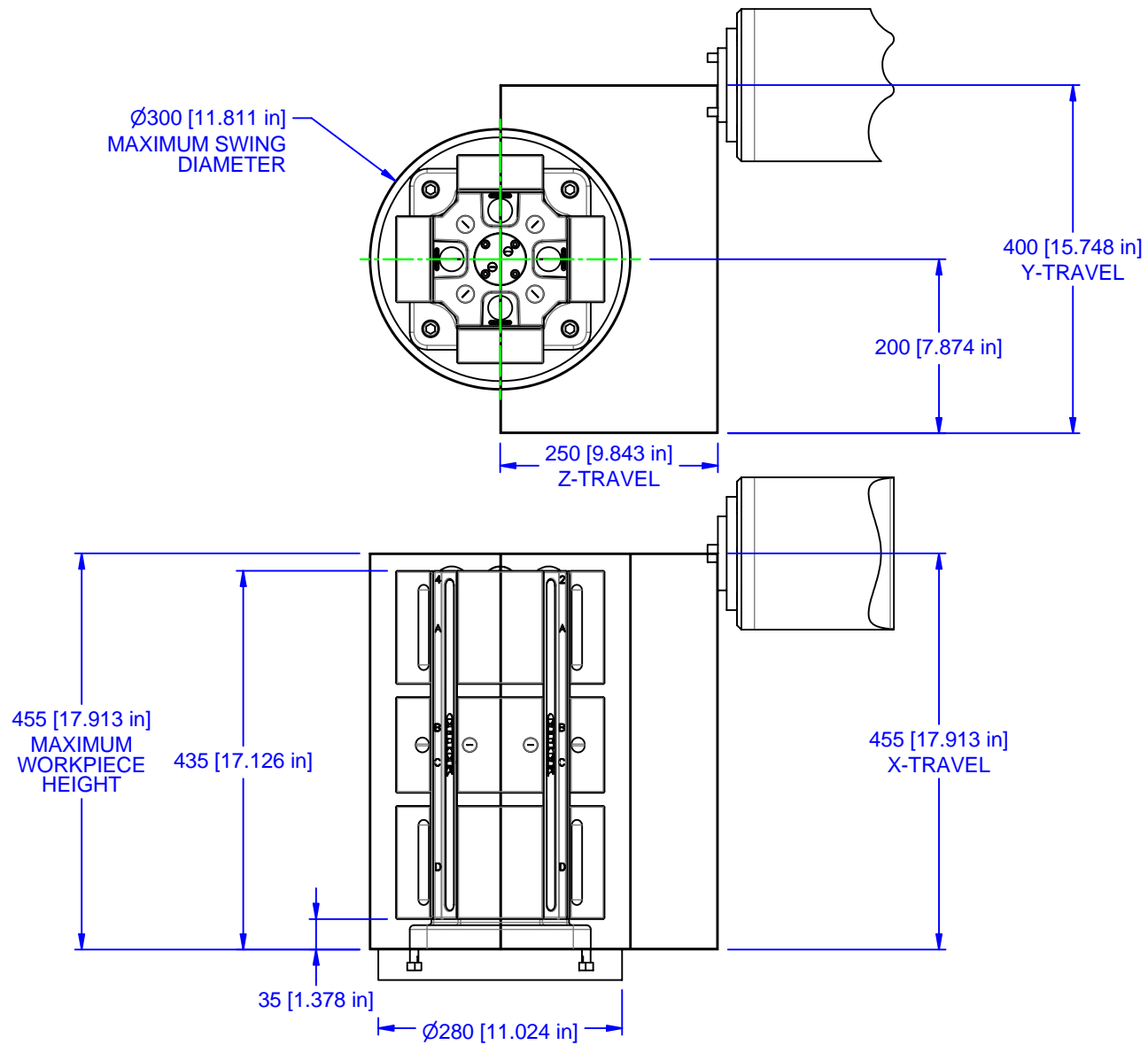
MATERIAL: NA
HARDNESS: NA
COATING: NA
WEIGHT: 75140 g
COMMENTS:

UNSPECIFIED TOLERANCES:
 X ±0.2
 X.X ±0.1
 X.XX ±0.05
 ANGLES ±0.5°
 ALL DIMENSIONS ARE MILLIMETERS.

CHICK (800) 332-4425
 (724) 772-1644
www.ChickWorkholding.com

UNSPECIFIED EDGES: BREAK 0.3 TO 0.8
 UNSPECIFIED FILLETS: RADIUS 0.3 MAX

ITEM: WORK PKG - HMC	REV
TYPE: HERMLE C 30 U	A1
FAM: 5ML1040-41	
STYLE: 208 SQ x 435 TALL	
TTK 2 OF 4	5HP-HERM-00009
7/26/2007	



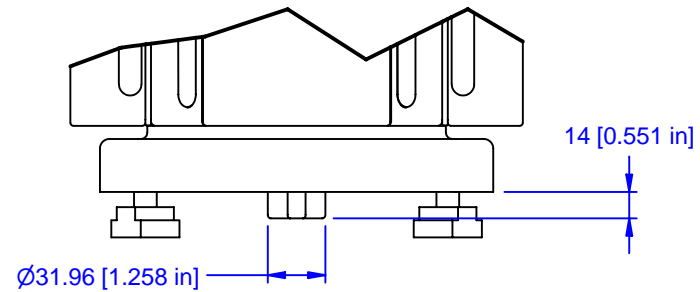
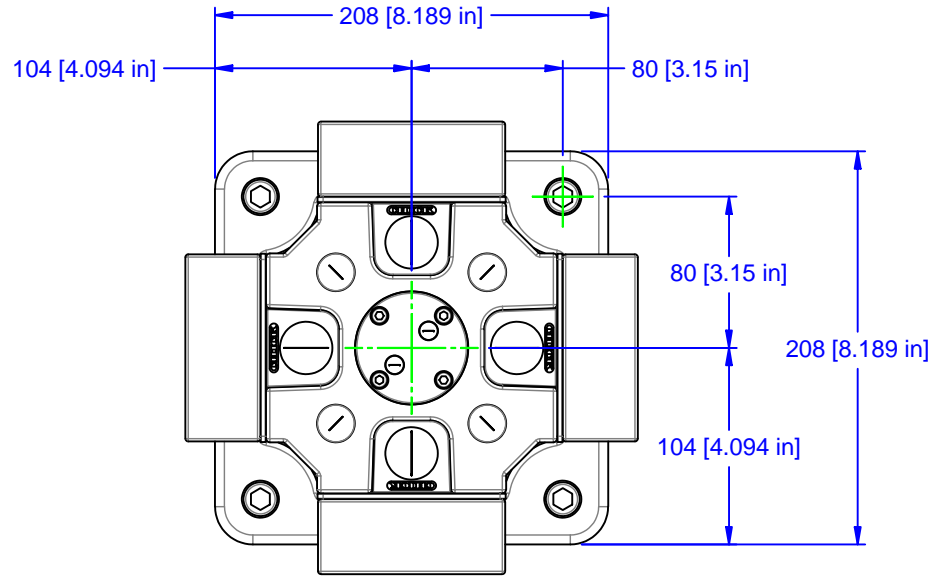
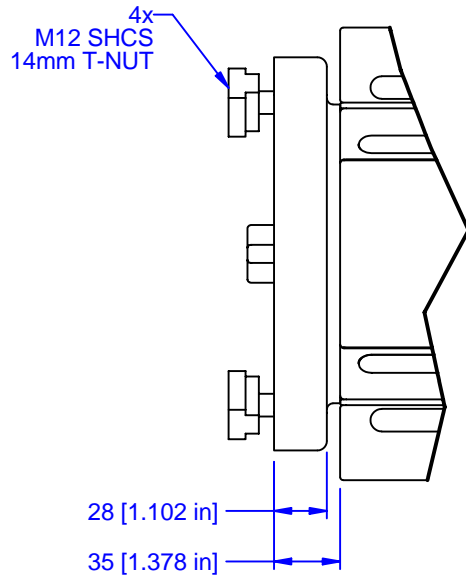
MATERIAL:	NA
HARDNESS:	NA
COATING:	NA
WEIGHT:	75140 g
COMMENTS:	

UNSPECIFIED TOLERANCES:
 X ± 0.2
 X.X ± 0.1
 X.XX ± 0.05
 ANGLES $\pm 0.5^\circ$
 ALL DIMENSIONS ARE MILLIMETERS.

 (800) 332-4425
 (724) 772-1644
www.ChickWorkholding.com

UNSPECIFIED EDGES: BREAK 0.3 TO 0.8
 UNSPECIFIED FILLETS: RADIUS 0.3 MAX

ITEM:	WORK PKG - HMC		
TYPE:	HERMLE C 30 U		
FAM:	5ML1040-41		
STYLE:	208 SQ x 435 TALL		
TTK	3 OF 4	5HP-HERM-00009	REV A1
7/26/2007			



MATERIAL: NA
HARDNESS: NA
COATING: NA
WEIGHT: 75140 g
COMMENTS:

UNSPECIFIED TOLERANCES:
 X ±0.2
 X.X ±0.1
 X.XX ±0.05
 ANGLES ±0.5°
 ALL DIMENSIONS ARE MILLIMETERS.

CHICK (800) 332-4425
 (724) 772-1644
www.ChickWorkholding.com

UNSPECIFIED EDGES: BREAK 0.3 TO 0.8
 UNSPECIFIED FILLETS: RADIUS 0.3 MAX

ITEM: WORK PKG - HMC		REV A1
TYPE: HERMLE C 30 U		
FAM: 5ML1040-41		5HP-HERM-00009
STYLE: 208 SQ x 435 TALL		
TTK	4 OF 4	
7/26/2007		