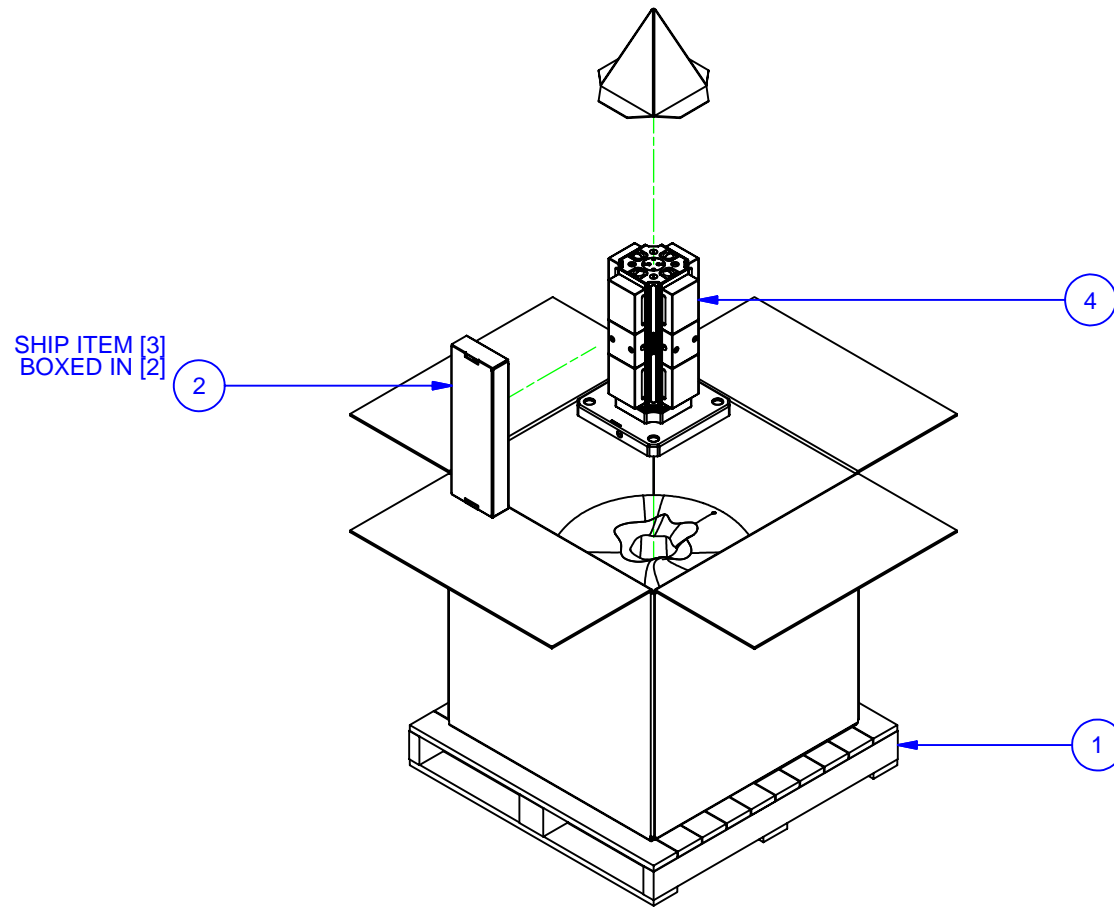
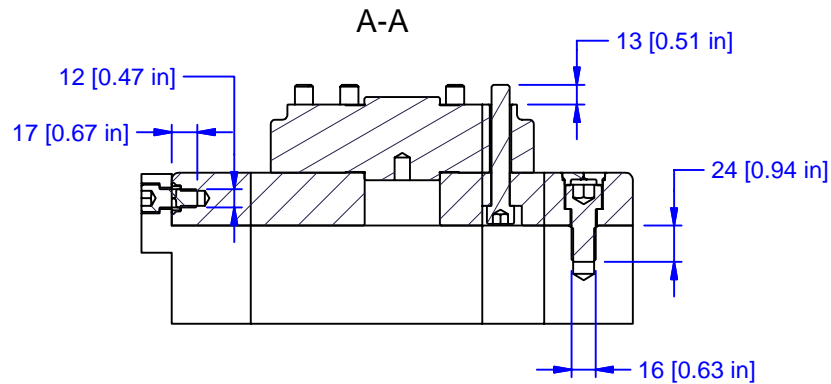
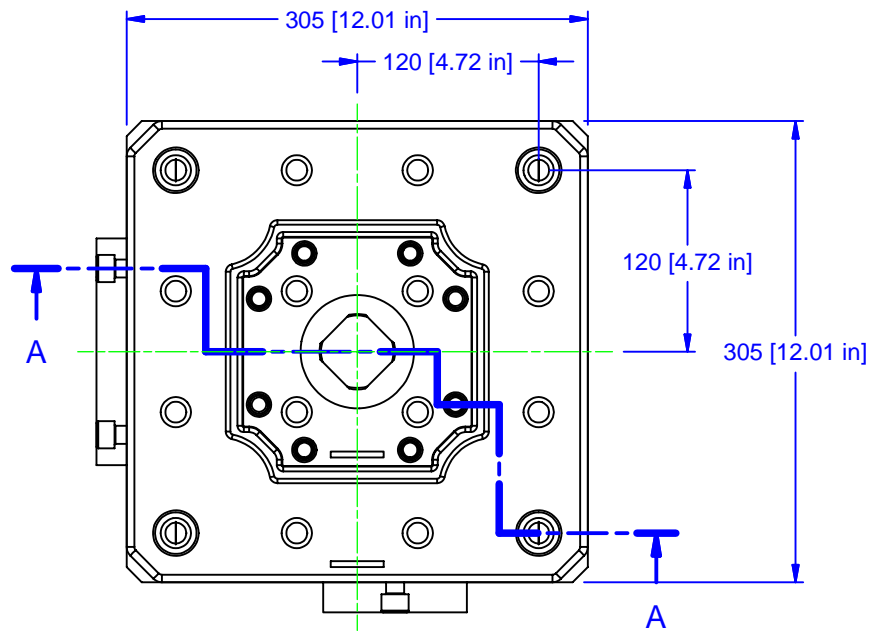


PARTS LIST						
No	QTY	PN	ITEM	TYPE	FAM	STYLE
1	1	185-0-10005	PACKAGING	SHIPPING CONTAINER	HMC WORK PKG.	36" X 36" X 30" - (M16)
2	1	185-0-10003	KIT	TOOLS	5ML10-41	STANDARD
3	1	185-2-10025	HARDWARE KIT	PP TO PALLET	MOD BP	185-1038 METRIC
4	1	186-1-10766	MULTI-LOK ASS'Y	KITAMURA HX-300	5ML1040-41	45MM TALL RISER



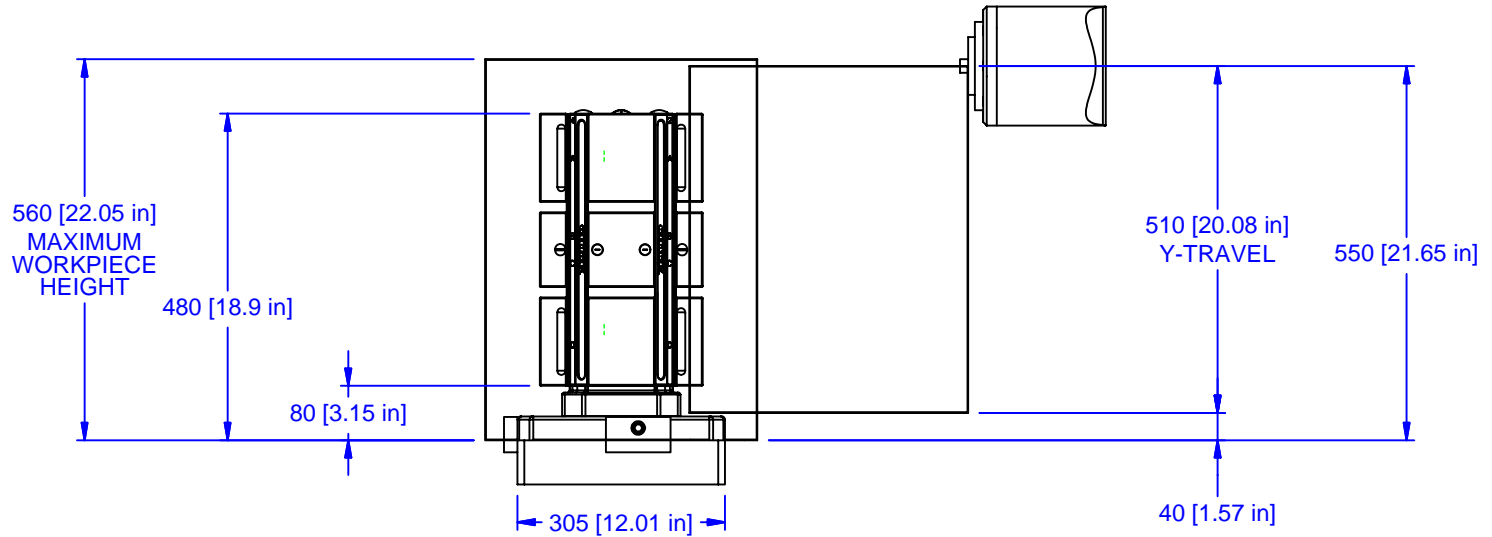
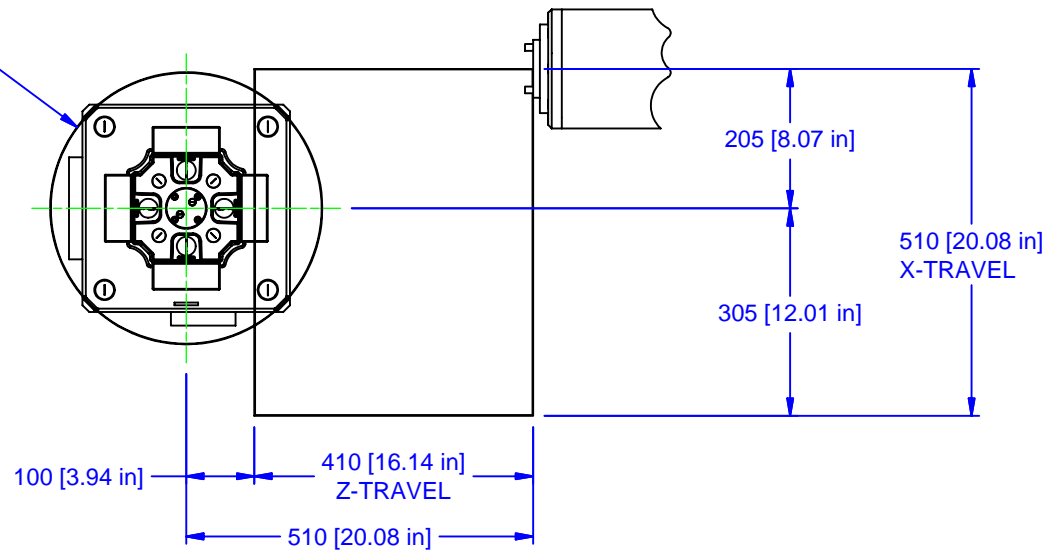
USE PALLET PLATE AS TEMPLATE TO DRILL PALLET

MATERIAL:	UNSPECIFIED TOLERANCES: X ±0.2 X.X ±0.1 X.XX ±0.05 ANGLES ±0.5° ALL DIMENSIONS ARE MILLIMETERS.	<b>CHICK</b> 500 Keystone Drive Warrendale, PA USA (800) 33-CHICK • (724) 772-1644 <a href="http://www.chick-workholding.com">www.chick-workholding.com</a>	ITEM: WORK PKG - HMC	TTK 1 OF 4 9/6/2006	REV <b>A1</b>
HARDNESS: NA			TYPE: KITAMURA HX-300 (M-E)		
COATING: NA			FAM: 5ML1040-41		
WEIGHT: 82430 g			STYLE: 305 SQ BASE X 480 TALL		
COMMENTS:			UNSPECIFIED EDGES: BREAK 0.3 TO 0.8 UNSPECIFIED FILLETS: RADIUS 0.3 MAX		



MATERIAL:	UNSPECIFIED TOLERANCES: X ±0.2 X.X ±0.1 X.XX ±0.05 ANGLES ±0.5° ALL DIMENSIONS ARE MILLIMETERS.	<b>CHICK</b> 500 Keystone Drive Warrendale, PA USA (800) 33-CHICK • (724) 772-1644 <a href="http://www.chick-workholding.com">www.chick-workholding.com</a>	ITEM: <b>WORK PKG - HMC</b>	TTK 2 OF 4 9/6/2006	REV <b>A1</b>
HARDNESS: <b>NA</b>			TYPE: <b>KITAMURA HX-300 (M-E)</b>		
COATING: <b>NA</b>			FAM: <b>5ML1040-41</b>		
WEIGHT: <b>82430 g</b>			STYLE: <b>305 SQ BASE X 480 TALL</b>		
COMMENTS:			UNSPECIFIED EDGES: BREAK 0.3 TO 0.8 UNSPECIFIED FILLETS: RADIUS 0.3 MAX		

Ø400 [15.75 in]  
MAXIMUM SWING  
DIAMETER

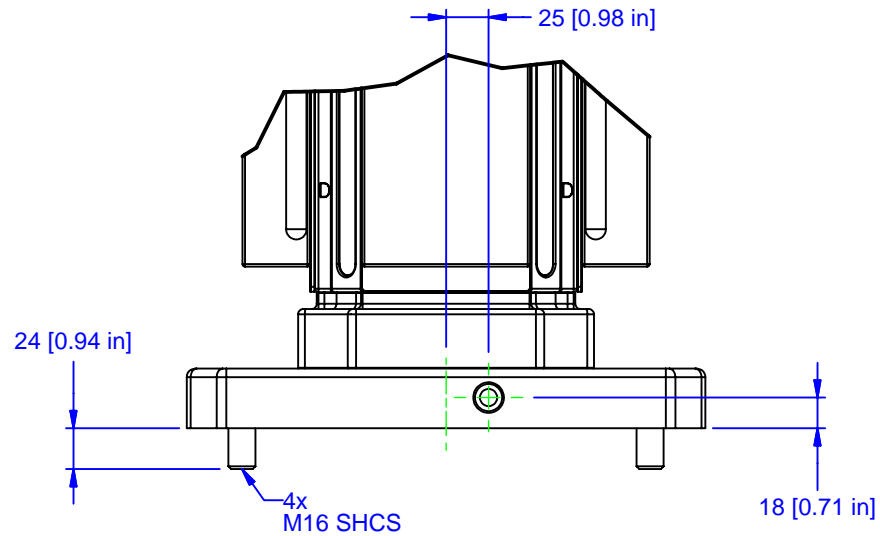
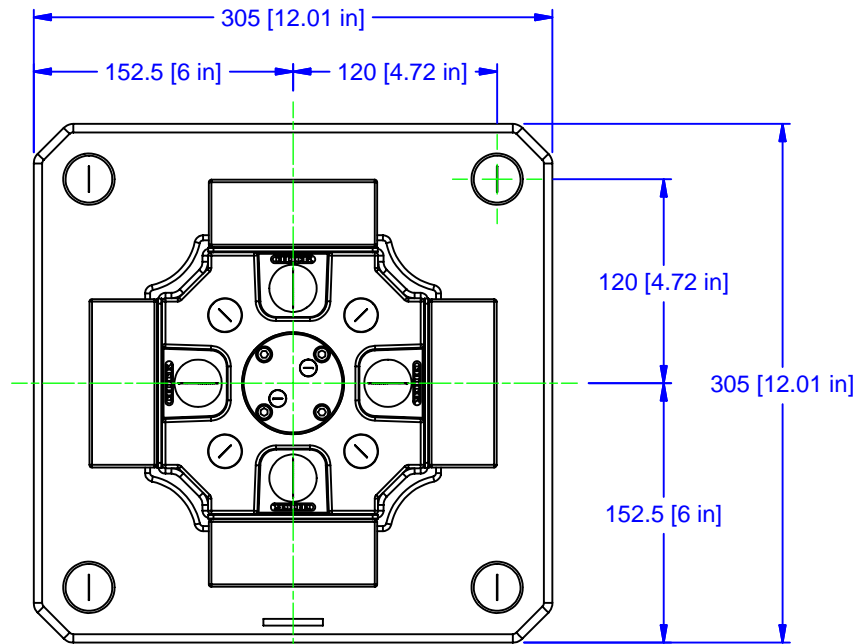
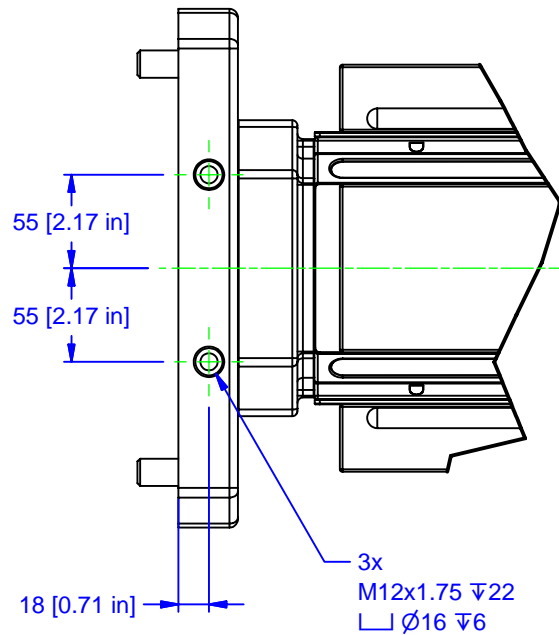


MATERIAL:	
HARDNESS: <b>NA</b>	
COATING: <b>NA</b>	
WEIGHT: <b>82430 g</b>	
COMMENTS:	

UNSPECIFIED TOLERANCES:  
 X ±0.2  
 X.X ±0.1  
 X.XX ±0.05  
 ANGLES ±0.5°  
 ALL DIMENSIONS ARE MILLIMETERS.

**CHICK** 500 Keystone Drive  
 Warrendale, PA USA  
 (800) 33-CHICK • (724) 772-1644  
[www.chick-workholding.com](http://www.chick-workholding.com)  
 UNSPECIFIED EDGES: BREAK 0.3 TO 0.8  
 UNSPECIFIED FILLETS: RADIUS 0.3 MAX

ITEM: <b>WORK PKG - HMC</b>	REV
TYPE: <b>KITAMURA HX-300 (M-E)</b>	<b>A1</b>
FAM: <b>5ML1040-41</b>	
STYLE: <b>305 SQ BASE X 480 TALL</b>	
TTK	3 OF 4
9/6/2006	<b>5HP-KITA-00072</b>



MATERIAL:
HARDNESS: <b>NA</b>
COATING: <b>NA</b>
WEIGHT: <b>82430 g</b>
COMMENTS:

UNSPECIFIED TOLERANCES:  
 X ±0.2  
 X.X ±0.1  
 X.XX ±0.05  
 ANGLES ±0.5°  
 ALL DIMENSIONS ARE MILLIMETERS.

**CHICK** 500 Keystone Drive  
 Warrendale, PA USA  
 (800) 33-CHICK • (724) 772-1644  
[www.chick-workholding.com](http://www.chick-workholding.com)

UNSPECIFIED EDGES: BREAK 0.3 TO 0.8  
 UNSPECIFIED FILLETS: RADIUS 0.3 MAX

ITEM: <b>WORK PKG - HMC</b>
TYPE: <b>KITAMURA HX-300 (M-E)</b>
FAM: <b>5ML1040-41</b>
STYLE: <b>305 SQ BASE X 480 TALL</b>
TTK 4 OF 4
9/6/2006
5HP-KITA-00072
REV <b>A1</b>