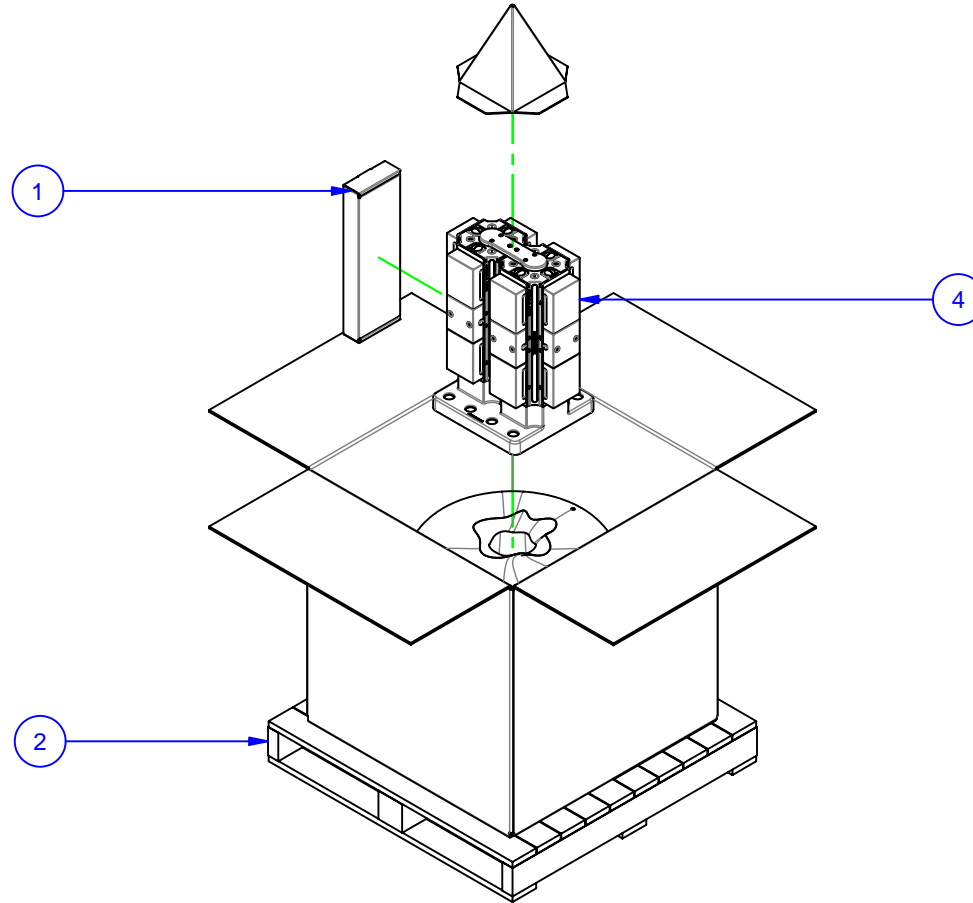


PARTS LIST

No	QTY	PN	ITEM	TYPE	FAM	STYLE
1	1	185-0-10002	KIT	TOOLS	5ML15-41	STANDARD
2	1	185-0-10005	PACKAGING	SHIPPING CONTAINER	HMC WORK PKG.	36" X 36" X 30" - (M16)
3	1	185-2-10013	KIT	PP TO PALLET - MOD BP	S5-41	299mm METRIC (M16)
4	1	188-1-10041	MULTI-LOK ASSEMBLY	KITAMURA HX-300iF	5ML1040-41-12	318 x 305 x 510 TALL



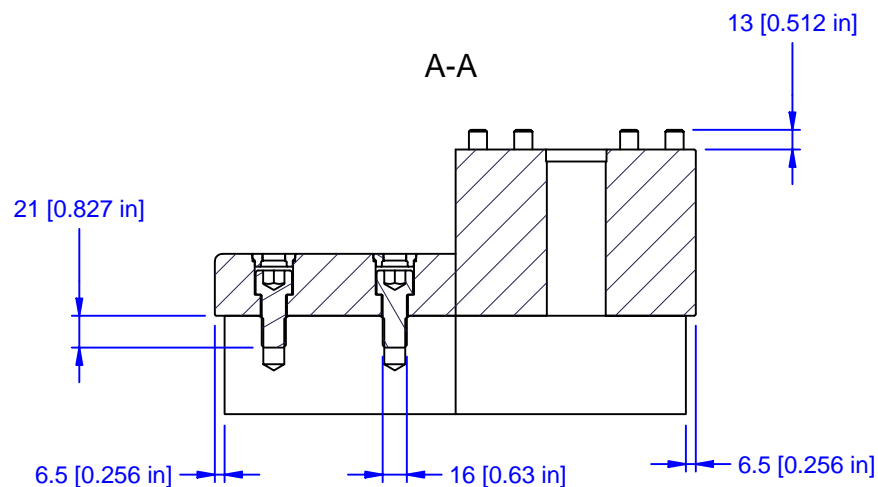
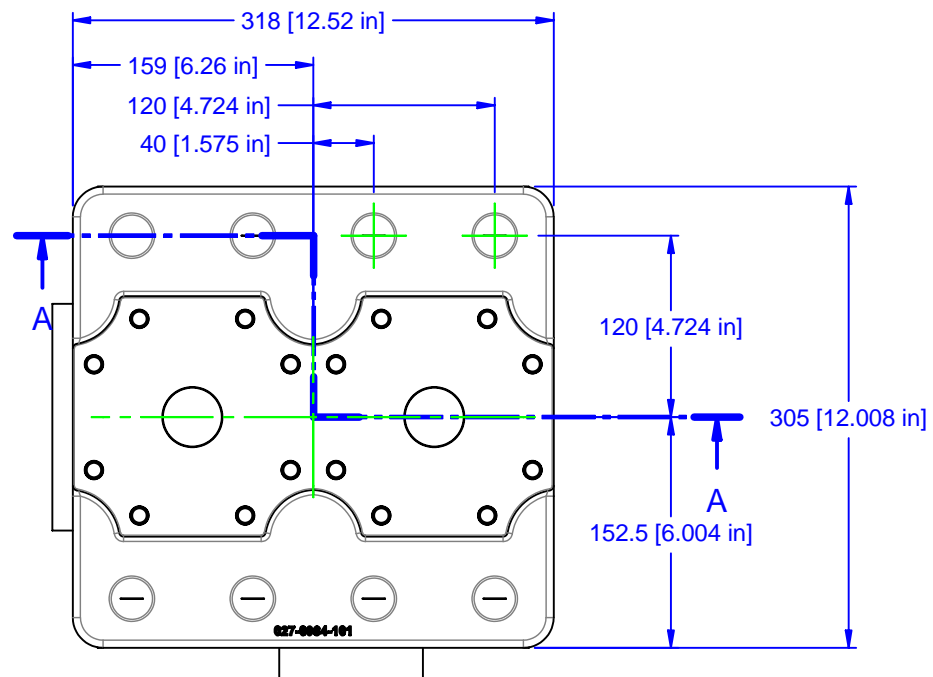
MATERIAL:
HARDNESS: NA
COATING: NA
WEIGHT: 122000 g
COMMENTS:

UNSPECIFIED TOLERANCES:
 X ±0.2
 X.X ±0.1
 X.XX ±0.05
 ANGLES ±0.5°
 ALL DIMENSIONS ARE MILLIMETERS.

CHICK 500 Keystone Drive
 Warrendale, PA USA
(800) 33-CHICK • (724) 772-1644
www.chick-workholding.com

UNSPECIFIED EDGES: BREAK 0.3 TO 0.8
 UNSPECIFIED FILLETS: RADIUS 0.3 MAX

ITEM: WORK PKG - HMC	REV
TYPE: KITAMURA HX-300iF	A1
FAM: 5ML1040-41-12	
STYLE: 318 x 305 x 510 TALL	
TTK	1 OF 4
10/2/2006	5HP-KITA-00074



MATERIAL:
HARDNESS: NA
COATING: NA
WEIGHT: 122000 g
COMMENTS:

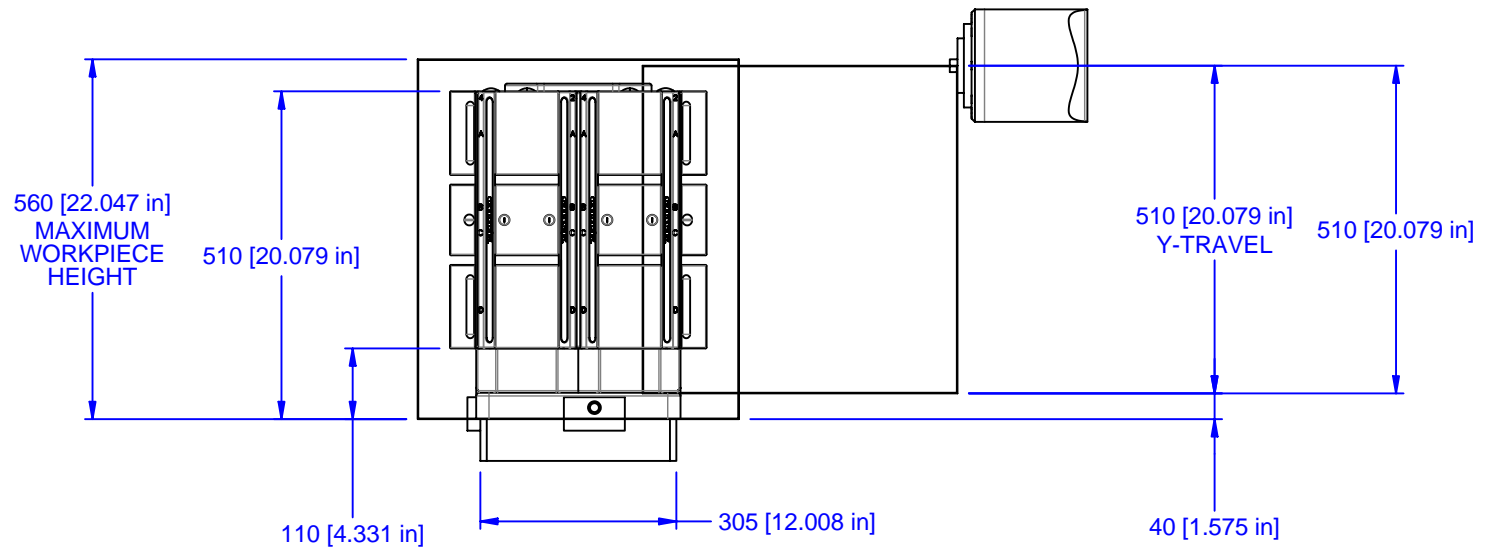
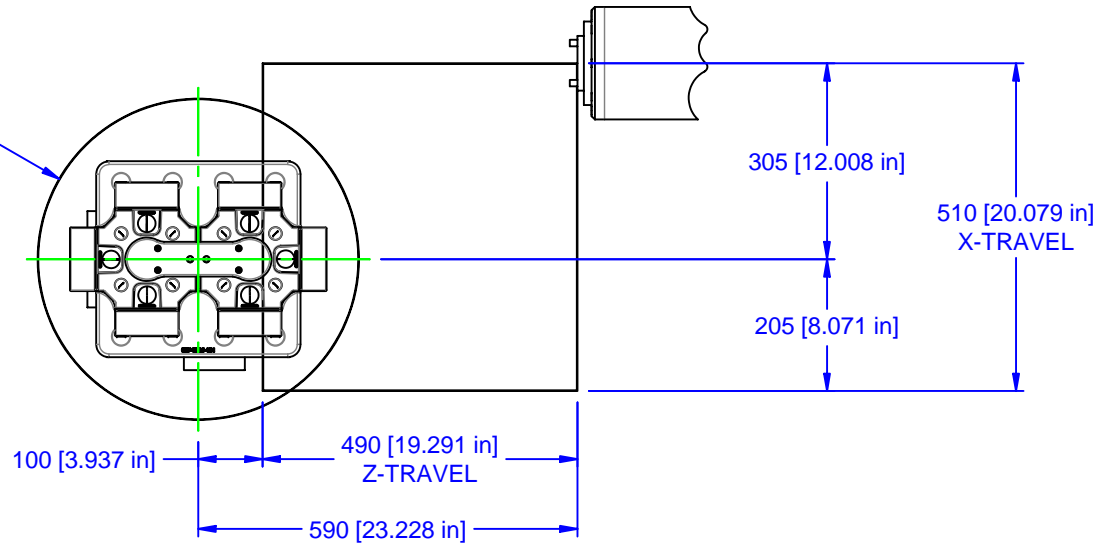
UNSPECIFIED TOLERANCES:
 X ±0.2
 X.X ±0.1
 X.XX ±0.05
 ANGLES ±0.5°
 ALL DIMENSIONS ARE MILLIMETERS.

CHICK 500 Keystone Drive
 Warrendale, PA USA
 (800) 33-CHICK • (724) 772-1644
 www.chick-workholding.com

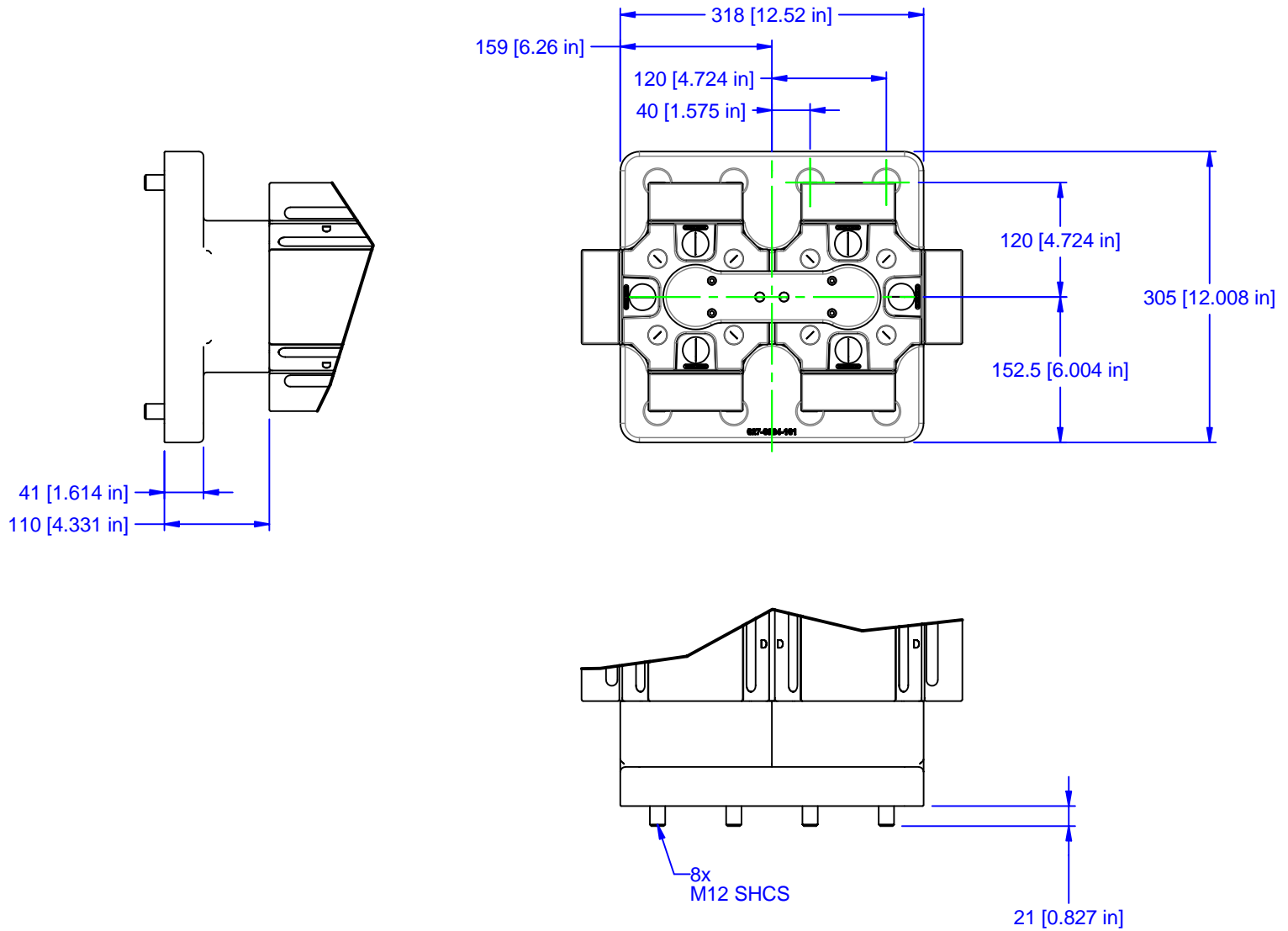
UNSPECIFIED EDGES: BREAK 0.3 TO 0.8
 UNSPECIFIED FILLETS: RADIUS 0.3 MAX

ITEM: WORK PKG - HMC	REV
TYPE: KITAMURA HX-300IF	A1
FAM: 5ML1040-41-12	
STYLE: 318 x 305 x 510 TALL	
TTK 2 OF 4	5HP-KITA-00074
10/2/2006	

Ø500 [19.685 in]
MAXIMUM SWING
DIAMETER



MATERIAL:	UNSPECIFIED TOLERANCES: X ±0.2 X.X ±0.1 X.XX ±0.05 ANGLES ±0.5° ALL DIMENSIONS ARE MILLIMETERS.	CHICK 500 Keystone Drive Warrendale, PA USA (800) 33-CHICK • (724) 772-1644 www.chick-workholding.com	ITEM: WORK PKG - HMC		
HARDNESS: NA			TYPE: KITAMURA HX-300IF		
COATING: NA			FAM: 5ML1040-41-12		
WEIGHT: 122000 g			STYLE: 318 x 305 x 510 TALL		
COMMENTS:			TTK 3 OF 4	5HP-KITA-00074	REV A1
			10/2/2006		



MATERIAL:	UNSPECIFIED TOLERANCES: X ±0.2 X.X ±0.1 X.XX ±0.05 ANGLES ±0.5° ALL DIMENSIONS ARE MILLIMETERS.	CHICK 500 Keystone Drive Warrendale, PA USA (800) 33-CHICK • (724) 772-1644 www.chick-workholding.com	ITEM: WORK PKG - HMC			
HARDNESS: NA			TYPE: KITAMURA HX-300IF			
COATING: NA			FAM: 5ML1040-41-12			
WEIGHT: 122000 g			STYLE: 318 x 305 x 510 TALL			
COMMENTS:			TTK	4 OF 4	5HP-KITA-00074	REV A1
			10/2/2006			