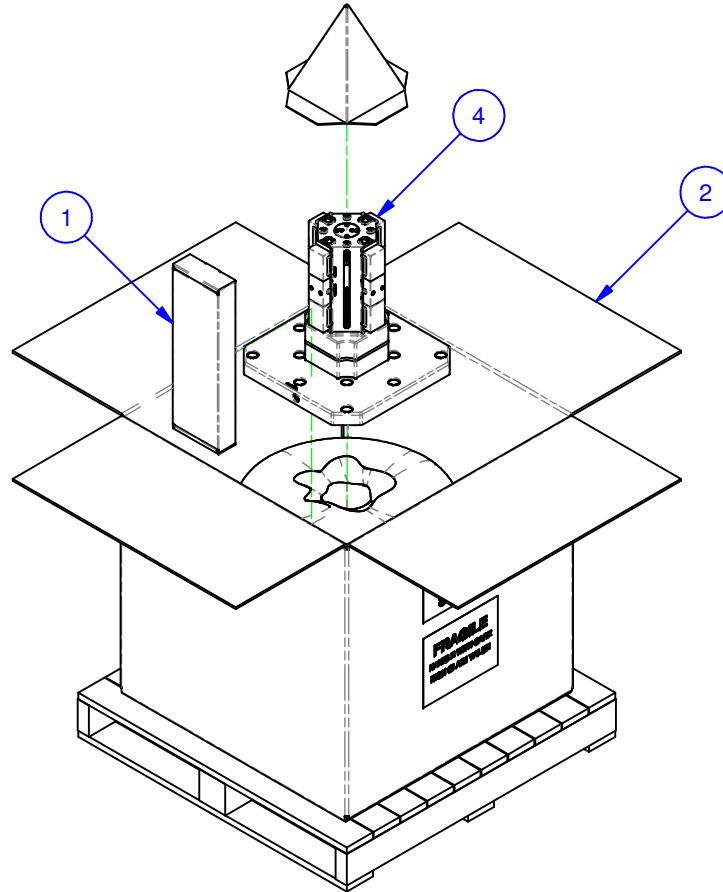


PARTS LIST						
No	QTY	PN	ITEM	TYPE	FAM	STYLE
1	1	185-0-10004	KIT	TOOLS	5ML05-41	STANDARD
2	1	185-0-10006	PACKAGING	SHIPPING CONTAINER	HMC WORK PKG.	36x36x30 [M16 W/8" BOLTS]
3	1	185-2-10007	KIT	PALLET PLATE MOUNTING / LOCATING	M16 TAPPED HOLE	(12) M16 X 35 SHCS / (3) M16 X 30 SHCS
4	1	186-1-10102	MULTI-LOK ASSEMBLY	400mm_M_FULL PALLET	082-4201	115mm TALL RISER

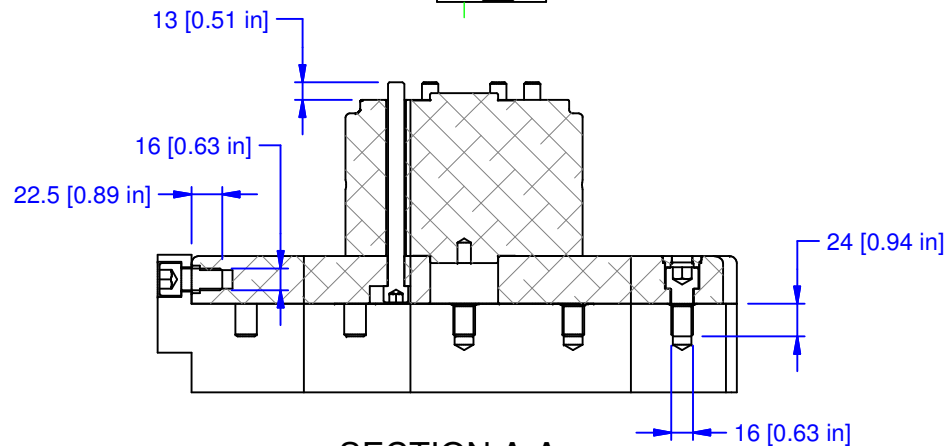
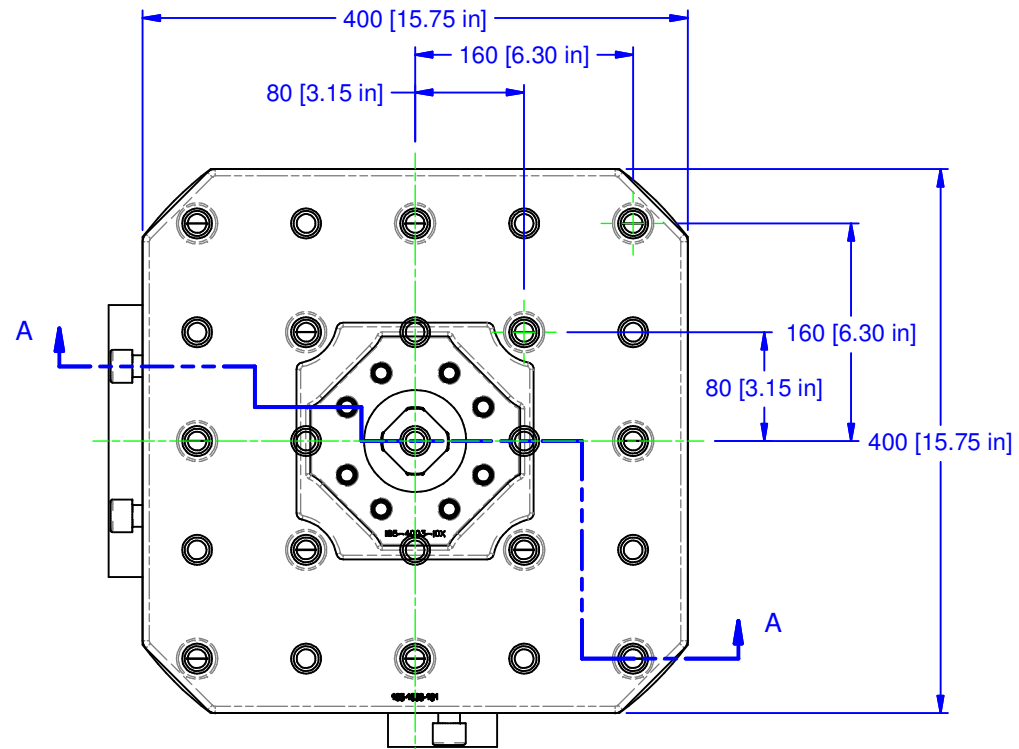


MATERIAL: NA
HARDNESS: NA
COATING: NA
WEIGHT: 65464 g
COMMENTS:

UNSPECIFIED TOLERANCES:
 X ±0.2
 X.X ±0.1
 X.XX ±0.05
 ANGLES ±0.5°
 ALL DIMENSIONS ARE MILLIMETERS.

CHICK (800) 332-4425
 (724) 772-1644
www.ChickWorkholding.com
 UNSPECIFIED EDGES: BREAK 0.3 TO 0.8
 UNSPECIFIED FILLETS: RADIUS 0.3 MAX

ITEM: WORK PKG - HMC		REV A
TYPE: KITAMURA HX-400i_M-(E)		
FAM: 082-4201		5HP-KITA-00146
STYLE: 400 SQ BASE X 400 TALL		
TDD 10/12/2010	1 OF 4	



SECTION A-A

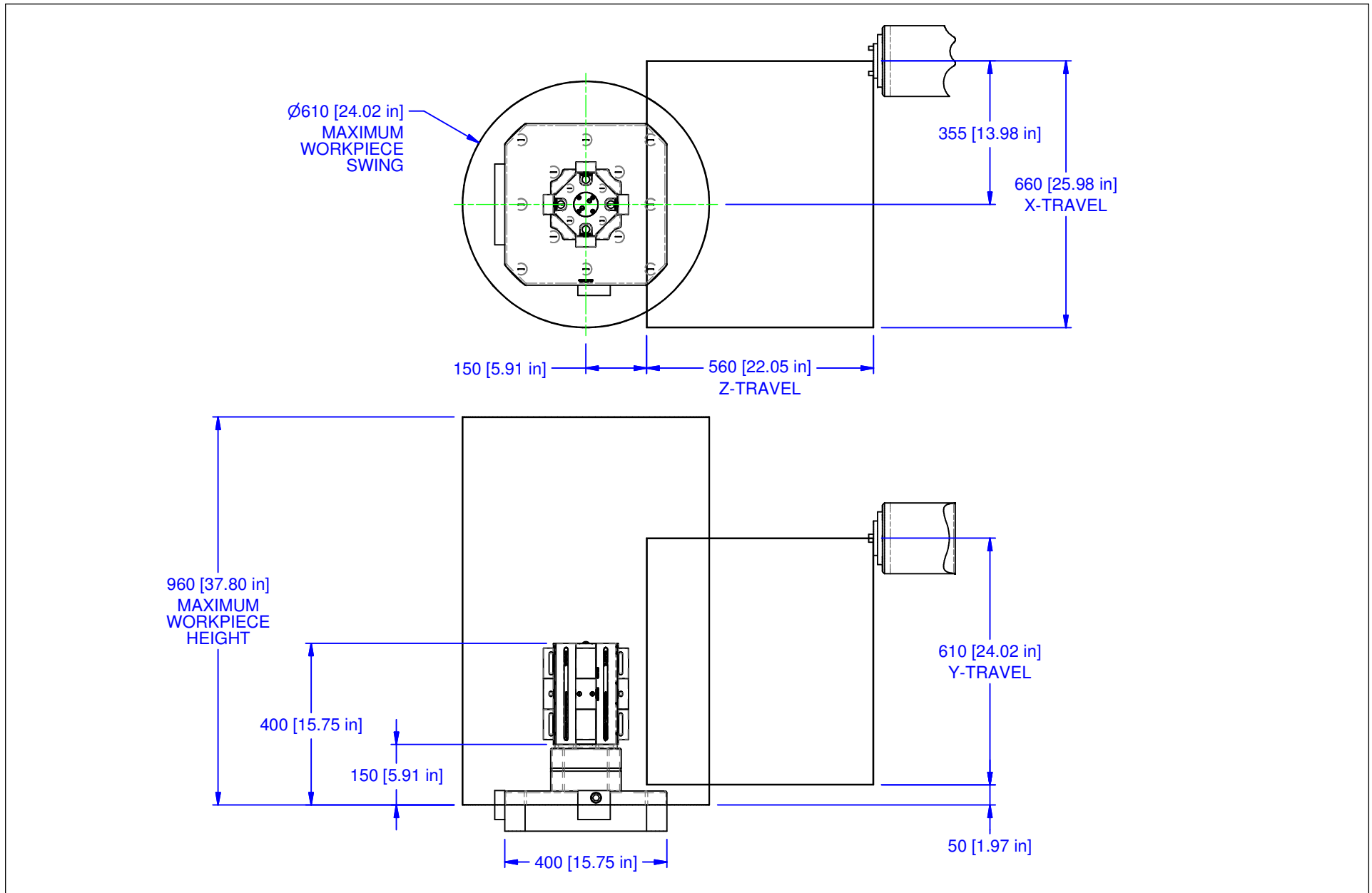
MATERIAL: NA
HARDNESS: NA
COATING: NA
WEIGHT: 65464 g
COMMENTS:


UNSPECIFIED TOLERANCES:
 X ±0.2
 X.X ±0.1
 X.XX ±0.05
 ANGLES ±0.5°
 ALL DIMENSIONS ARE MILLIMETERS.

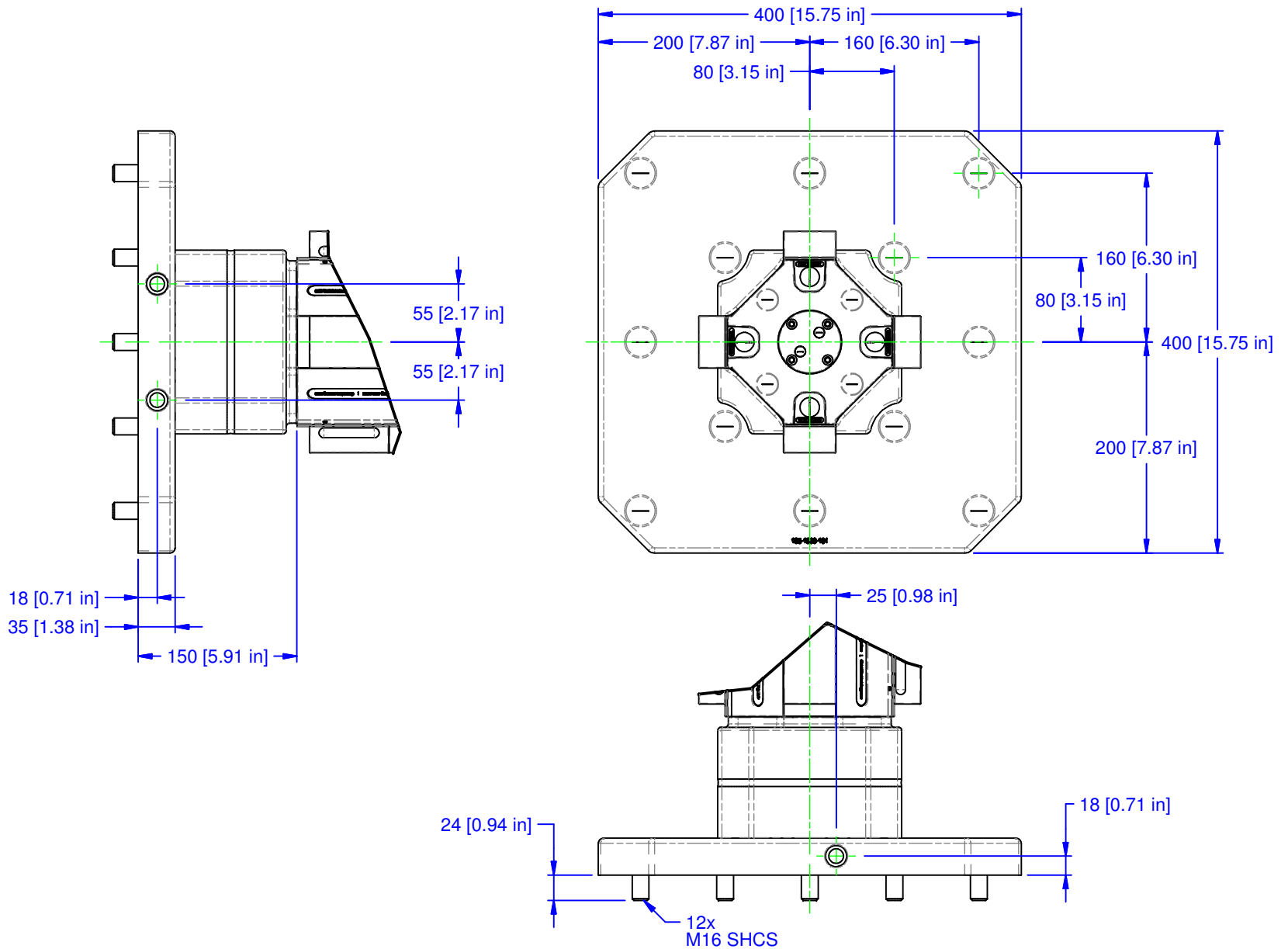
CHICK (800) 332-4425
 (724) 772-1644
www.ChickWorkholding.com

UNSPECIFIED EDGES: BREAK 0.3 TO 0.8
 UNSPECIFIED FILLETS: RADIUS 0.3 MAX

ITEM: WORK PKG - HMC		REV A
TYPE: KITAMURA HX-400i_M-(E)		
FAM: 082-4201		5HP-KITA-00146
STYLE: 400 SQ BASE X 400 TALL		
TDD 10/12/2010	2 OF 4	



MATERIAL: NA	UNSPECIFIED TOLERANCES: X ± 0.2 X.X ± 0.1 X.XX ± 0.05 ANGLES $\pm 0.5^\circ$ ALL DIMENSIONS ARE MILLIMETERS.	 (800) 332-4425 (724) 772-1644 www.ChickWorkholding.com	ITEM: WORK PKG - HMC						
HARDNESS: NA			TYPE: KITAMURA HX-400i_M-(E)						
COATING: NA			FAM: 082-4201						
WEIGHT: 65464 g			STYLE: 400 SQ BASE X 400 TALL						
COMMENTS:									
		UNSPECIFIED EDGES: BREAK 0.3 TO 0.8 UNSPECIFIED FILLETS: RADIUS 0.3 MAX	<table border="1"> <tr> <td>TDD</td> <td>3 OF 4</td> <td rowspan="2">5HP-KITA-00146</td> <td rowspan="2">REV A</td> </tr> <tr> <td colspan="2">10/12/2010</td> </tr> </table>	TDD	3 OF 4	5HP-KITA-00146	REV A	10/12/2010	
TDD	3 OF 4	5HP-KITA-00146	REV A						
10/12/2010									



MATERIAL:	NA
HARDNESS:	NA
COATING:	NA
WEIGHT:	65464 g
COMMENTS:	

UNSPECIFIED TOLERANCES:
 X ±0.2
 X.X ±0.1
 X.XX ±0.05
 ANGLES ±0.5°
 ALL DIMENSIONS ARE MILLIMETERS.

CHICK (800) 332-4425
 (724) 772-1644
www.ChickWorkholding.com

UNSPECIFIED EDGES: BREAK 0.3 TO 0.8
 UNSPECIFIED FILLETS: RADIUS 0.3 MAX

ITEM: WORK PKG - HMC		REV A
TYPE: KITAMURA HX-400i_M-(E)		
FAM: 082-4201		5HP-KITA-00146
STYLE: 400 SQ BASE X 400 TALL		
TDD	4 OF 4	
10/12/2010		