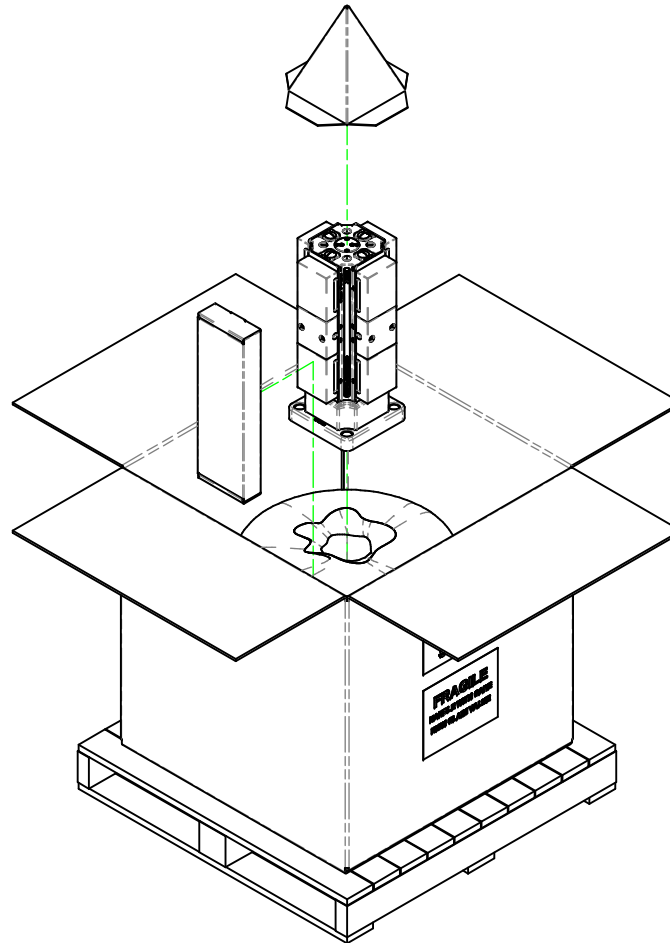

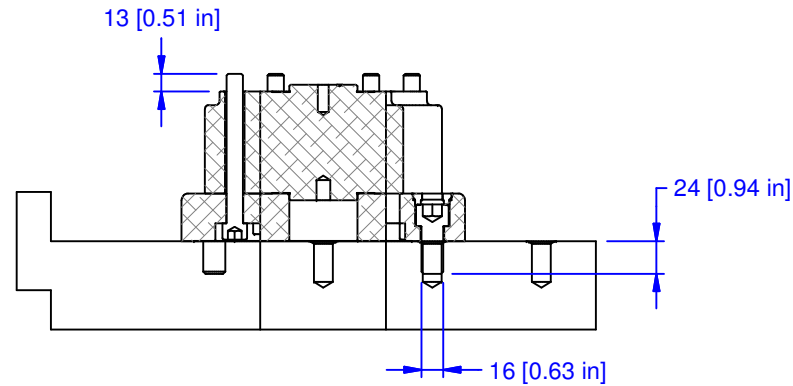
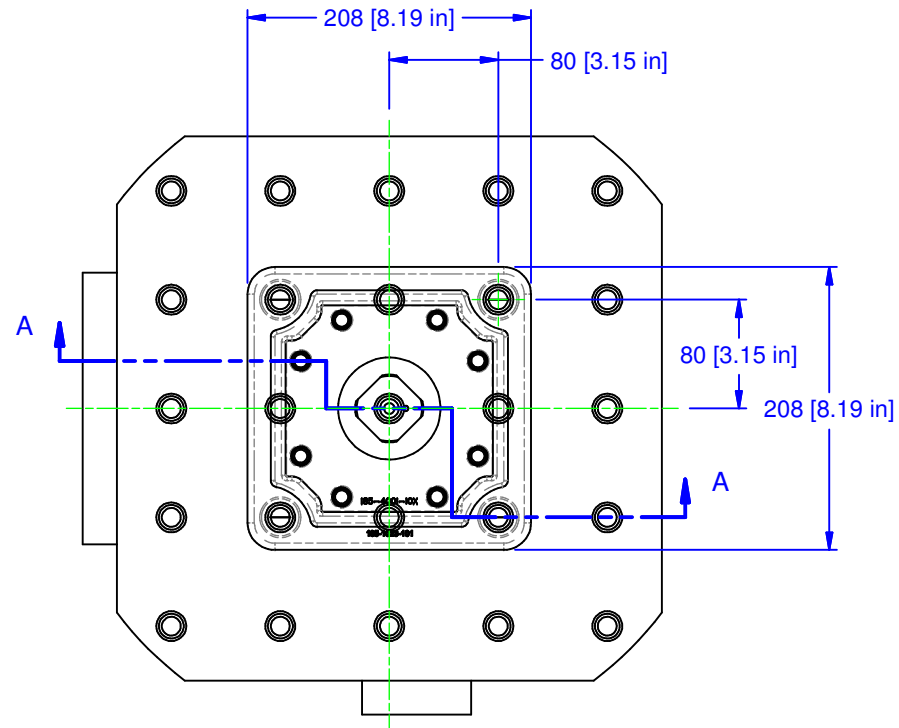


PARTS LIST						
No	QTY	PN	ITEM	TYPE	FAM	STYLE
1	1	185-0-10003	KIT	TOOLS	5ML10-41	STANDARD
2	1	185-0-10006	PACKAGING	SHIPPING CONTAINER	HMC WORK PKG.	36x36x30 [M16 W/8" BOLTS]
3	1	185-2-10010	KIT	PP TO PALLET - MOD BP	S5-41	208/250mm METRIC (M16)
4	1	186-1-10261	MULTI-LOK ASSEMBLY	400mm MET PARTIAL PALLET	5ML1040-41	75mm TALL RISER



MATERIAL: NA	UNSPECIFIED TOLERANCES: X ±0.2 X.X ±0.1 X.XX ±0.05 ANGLES ±0.5° ALL DIMENSIONS ARE MILLIMETERS.	 (800) 332-4425 (724) 772-1644 www.ChickWorkholding.com	ITEM: WORK PKG - HMC						
HARDNESS: NA			TYPE: KITAMURA HX-400;SII_M-E						
COATING: NA			FAM: 5ML1040-41						
WEIGHT: 78871 g			STYLE: 208 SQ BASE X 510 TALL						
COMMENTS:		UNSPECIFIED EDGES: BREAK 0.3 TO 0.8 UNSPECIFIED FILLETS: RADIUS 0.3 MAX	<table border="1"> <tr> <td>TDD</td> <td>1 OF 4</td> <td rowspan="2">5HP-KITA-00158</td> <td rowspan="2">REV A</td> </tr> <tr> <td colspan="2">9/14/2011</td> </tr> </table>	TDD	1 OF 4	5HP-KITA-00158	REV A	9/14/2011	
TDD	1 OF 4	5HP-KITA-00158	REV A						
9/14/2011									



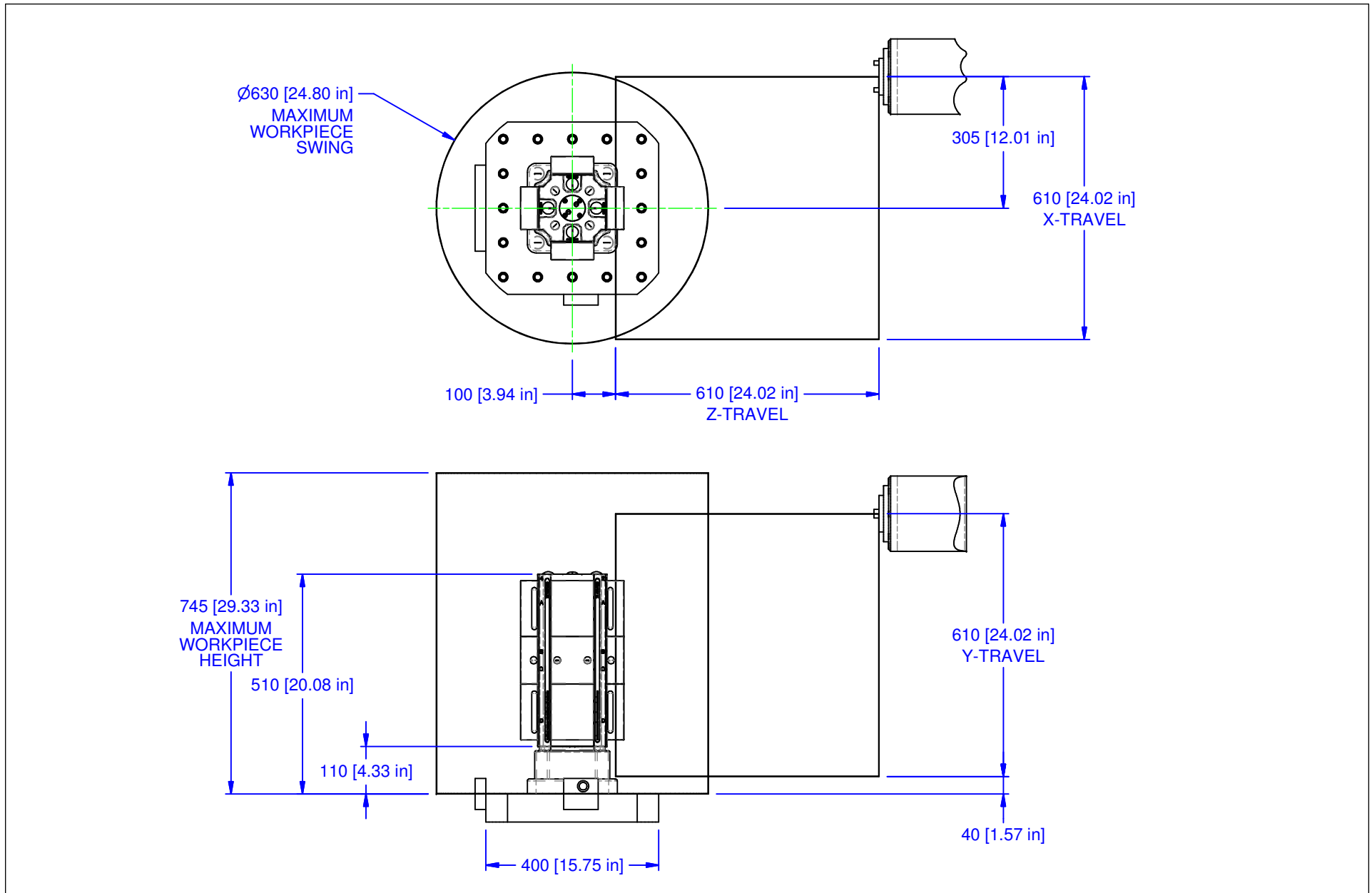
SECTION A-A

MATERIAL:	NA
HARDNESS:	NA
COATING:	NA
WEIGHT:	78871 g
COMMENTS:	

UNSPECIFIED TOLERANCES:
 X ±0.2
 X.X ±0.1
 X.XX ±0.05
 ANGLES ±0.5°
 ALL DIMENSIONS ARE MILLIMETERS.

CHICK (800) 332-4425
 (724) 772-1644
www.ChickWorkholding.com
 UNSPECIFIED EDGES: BREAK 0.3 TO 0.8
 UNSPECIFIED FILLETS: RADIUS 0.3 MAX

ITEM: WORK PKG - HMC		REV A
TYPE: KITAMURA HX-400iSII_M-E		
FAM: 5ML1040-41		5HP-KITA-00158
STYLE: 208 SQ BASE X 510 TALL		
TDD	2 OF 4	
9/14/2011		

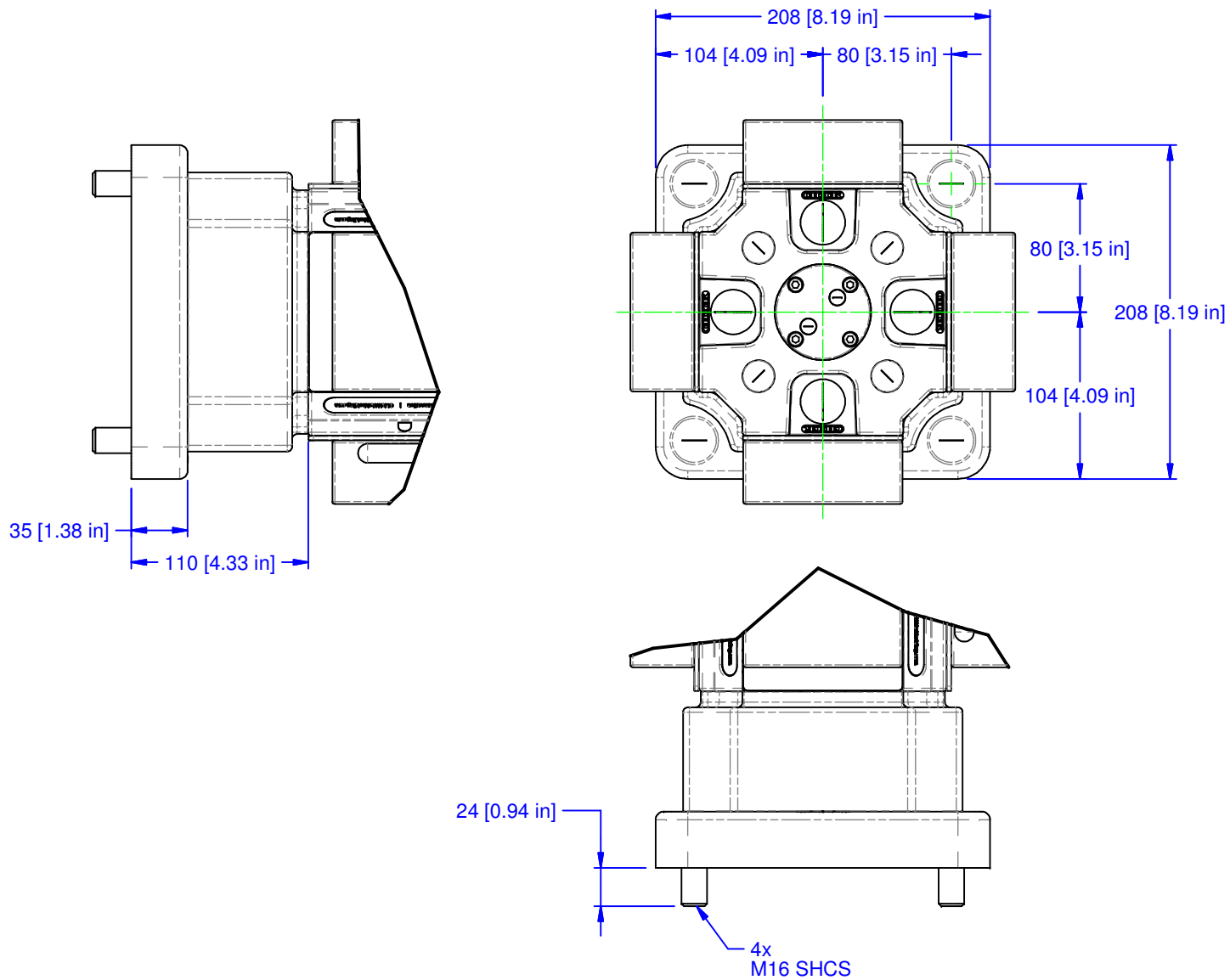


MATERIAL:	NA
HARDNESS:	NA
COATING:	NA
WEIGHT:	78871 g
COMMENTS:	

UNSPECIFIED TOLERANCES:
 X ±0.2
 X.X ±0.1
 X.XX ±0.05
 ANGLES ±0.5°
 ALL DIMENSIONS ARE MILLIMETERS.

CHICK (800) 332-4425
 (724) 772-1644
www.ChickWorkholding.com
 UNSPECIFIED EDGES: BREAK 0.3 TO 0.8
 UNSPECIFIED FILLETS: RADIUS 0.3 MAX

ITEM: WORK PKG - HMC		REV
TYPE: KITAMURA HX-400iSII_M-E		A
FAM: 5ML1040-41		
STYLE: 208 SQ BASE X 510 TALL		
TDD	3 OF 4	5HP-KITA-00158
9/14/2011		



MATERIAL: NA
HARDNESS: NA
COATING: NA
WEIGHT: 78871 g
COMMENTS:

UNSPECIFIED TOLERANCES:
 X ±0.2
 X.X ±0.1
 X.XX ±0.05
 ANGLES ±0.5°
 ALL DIMENSIONS ARE MILLIMETERS.

CHICK (800) 332-4425
 (724) 772-1644
www.ChickWorkholding.com
 UNSPECIFIED EDGES: BREAK 0.3 TO 0.8
 UNSPECIFIED FILLETS: RADIUS 0.3 MAX

ITEM: WORK PKG - HMC		REV
TYPE: KITAMURA HX-400iSII_M-E		A
FAM: 5ML1040-41		
STYLE: 208 SQ BASE X 510 TALL		
TDD	4 OF 4	5HP-KITA-00158
9/14/2011		