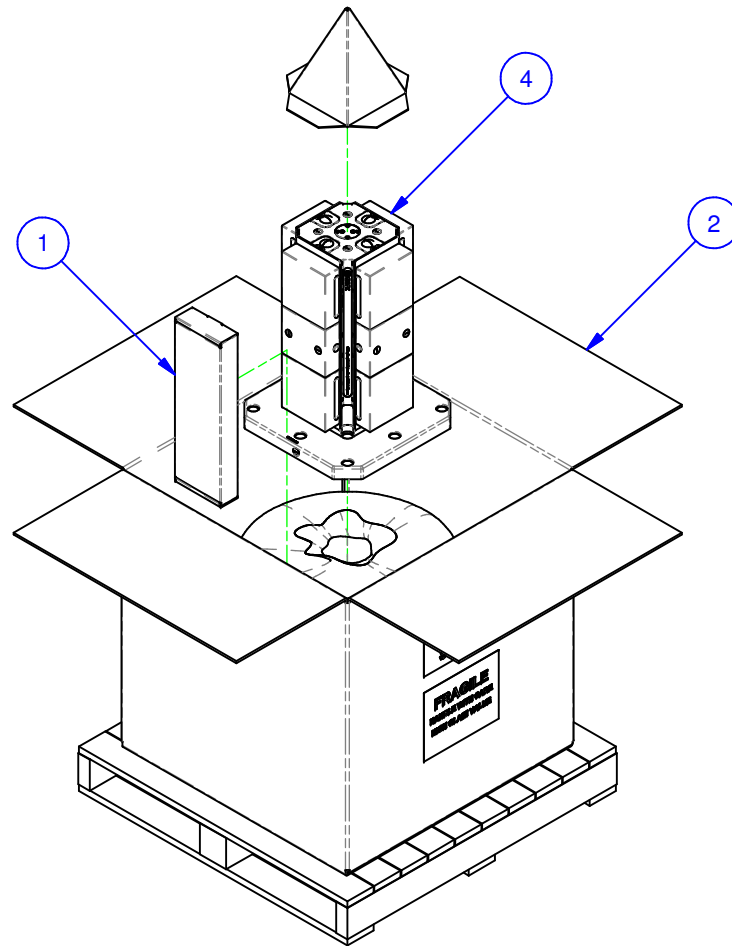


PARTS LIST

No	QTY	PN	ITEM	TYPE	FAM	STYLE
1	1	185-0-10002	KIT	TOOLS	5ML15-41	STANDARD
2	1	185-0-10006	PACKAGING	SHIPPING CONTAINER	HMC WORK PKG.	36x36x30 [M16 W/8" BOLTS]
3	1	185-2-10007	KIT	PALLET PLATE MOUNTING / LOCATING	M16 TAPPED HOLE	(12) M16 X 35 SHCS / (3) M16 X 30 SHCS
4	1	186-1-10451	MULTI-LOK ASSEMBLY	400mm MET PALLET PLATE	5ML1550-41	20mm TALL RISER

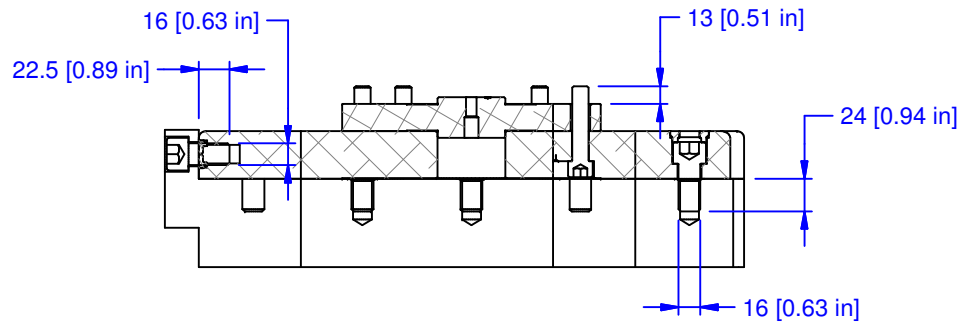
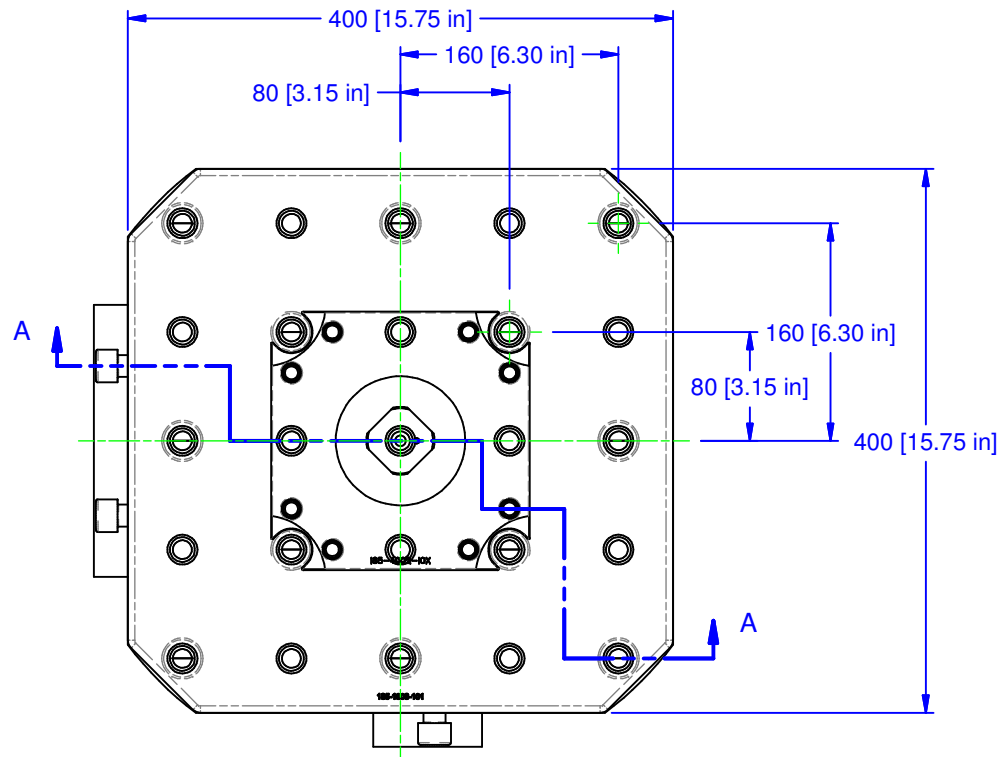


MATERIAL: NA
HARDNESS: NA
COATING: NA
WEIGHT: 140338 g
COMMENTS:

UNSPECIFIED TOLERANCES:
 X ±0.2
 X.X ±0.1
 X.XX ±0.05
 ANGLES ±0.5°
 ALL DIMENSIONS ARE MILLIMETERS.

CHICK (800) 332-4425
 (724) 772-1644
www.ChickWorkholding.com

ITEM: WORK PKG - HMC		REV A
TYPE: KITAMURA HX-400iF_M-(E)		
FAM: 5ML1550-41		SHP-KITA-00160
STYLE: 400 SQ BASE X 555 TALL		
TDD	1 OF 4	
11/9/2011		



SECTION A-A

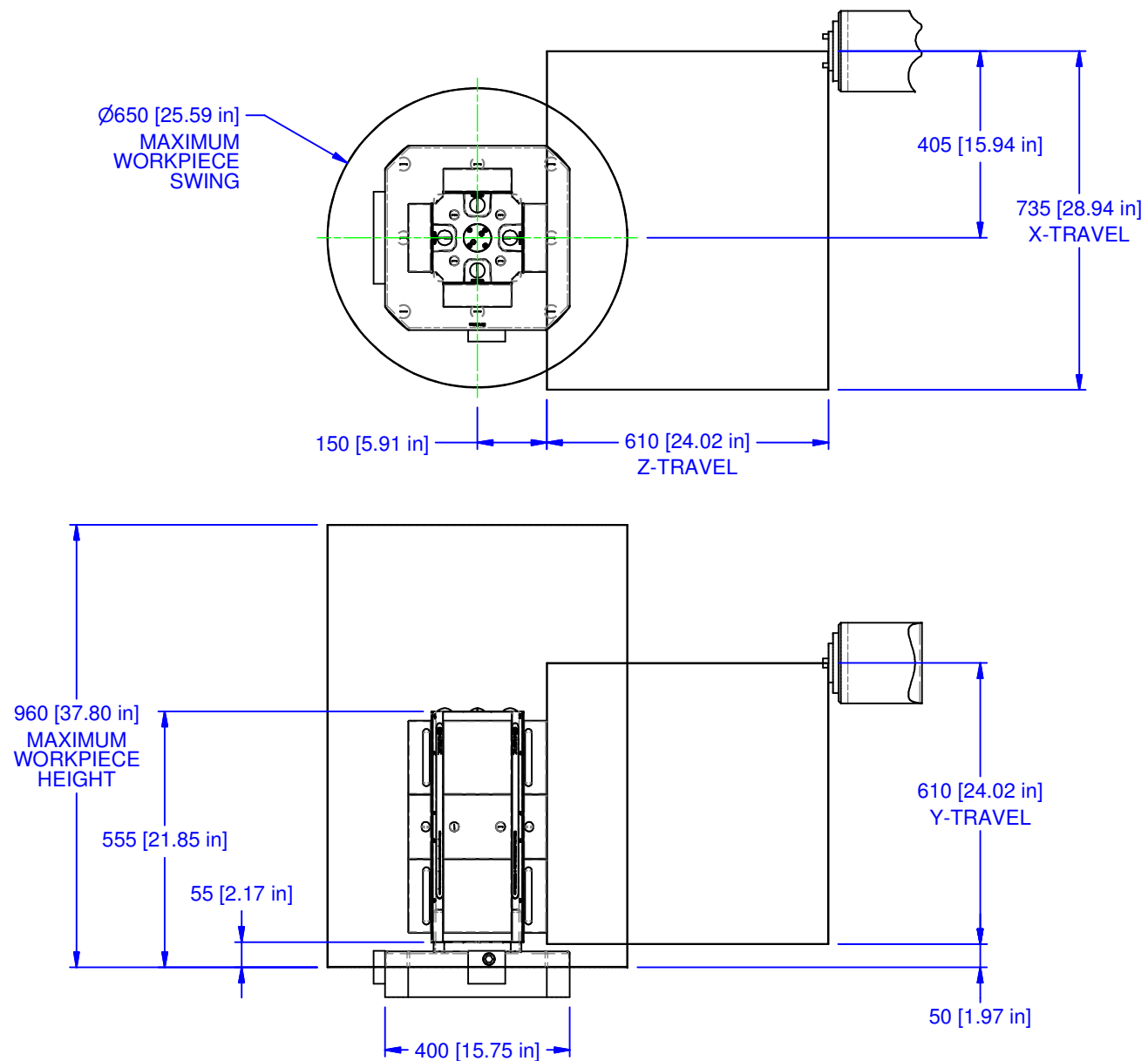
MATERIAL: NA
HARDNESS: NA
COATING: NA
WEIGHT: 140338 g
COMMENTS:

UNSPECIFIED TOLERANCES:	
X	±0.2
X.X	±0.1
X.XX	±0.05
ANGLES	±0.5°
ALL DIMENSIONS ARE MILLIMETERS.	


 (800) 332-4425
 (724) 772-1644
www.ChickWorkholding.com

UNSPECIFIED EDGES: BREAK 0.3 TO 0.8
 UNSPECIFIED FILLETS: RADIUS 0.3 MAX

ITEM: WORK PKG - HMC		REV A
TYPE: KITAMURA HX-400iF_M-(E)		
FAM: 5ML1550-41		5HP-KITA-00160
STYLE: 400 SQ BASE X 555 TALL		
TDD	2 OF 4	
11/9/2011		



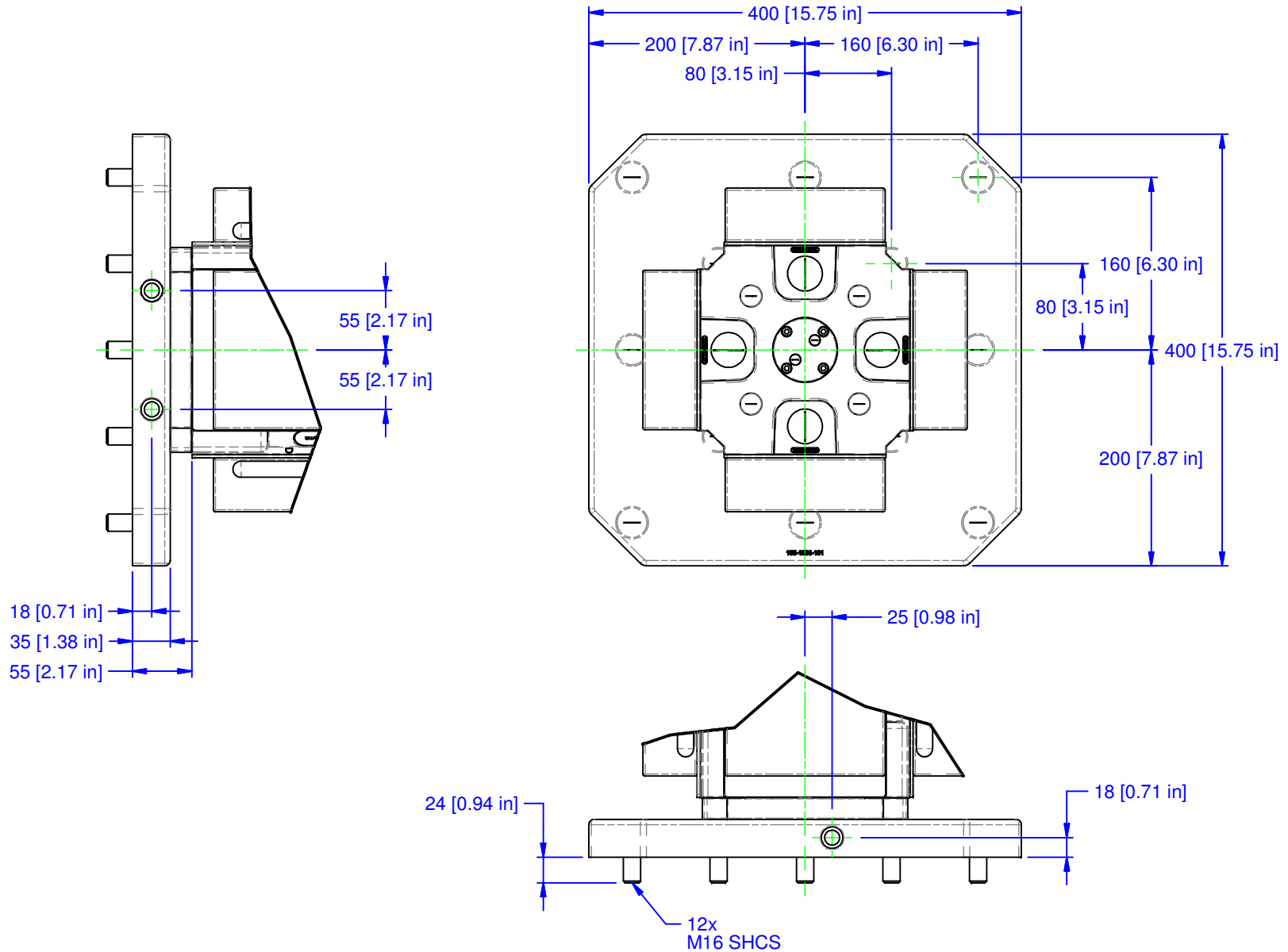
MATERIAL:	NA
HARDNESS:	NA
COATING:	NA
WEIGHT:	140338 g
COMMENTS:	

UNSPECIFIED TOLERANCES:
 X ±0.2
 X.X ±0.1
 X.XX ±0.05
 ANGLES ±0.5°
 ALL DIMENSIONS ARE MILLIMETERS.

CHICK (800) 332-4425
 (724) 772-1644
www.ChickWorkholding.com

UNSPECIFIED EDGES: BREAK 0.3 TO 0.8
 UNSPECIFIED FILLETS: RADIUS 0.3 MAX

ITEM:	WORK PKG - HMC		
TYPE:	KITAMURA HX-400iF_M-(E)		
FAM:	5ML1550-41		
STYLE:	400 SQ BASE X 555 TALL		
TDD	3 OF 4	5HP-KITA-00160	REV A
11/9/2011			



MATERIAL: NA	UNSPECIFIED TOLERANCES: X ±0.2 X.X ±0.1 X.XX ±0.05 ANGLES ±0.5° ALL DIMENSIONS ARE MILLIMETERS.	(800) 332-4425 (724) 772-1644 www.ChickWorkholding.com	ITEM: WORK PKG - HMC	REV A	
HARDNESS: NA			TYPE: KITAMURA HX-400iF_M-(E)		
COATING: NA			FAM: 5ML1550-41	TDD	4 OF 4
WEIGHT: 140338 g			STYLE: 400 SQ BASE X 555 TALL	11/9/2011	5HP-KITA-00160
COMMENTS:		UNSPECIFIED EDGES: BREAK 0.3 TO 0.8 UNSPECIFIED FILLETS: RADIUS 0.3 MAX			