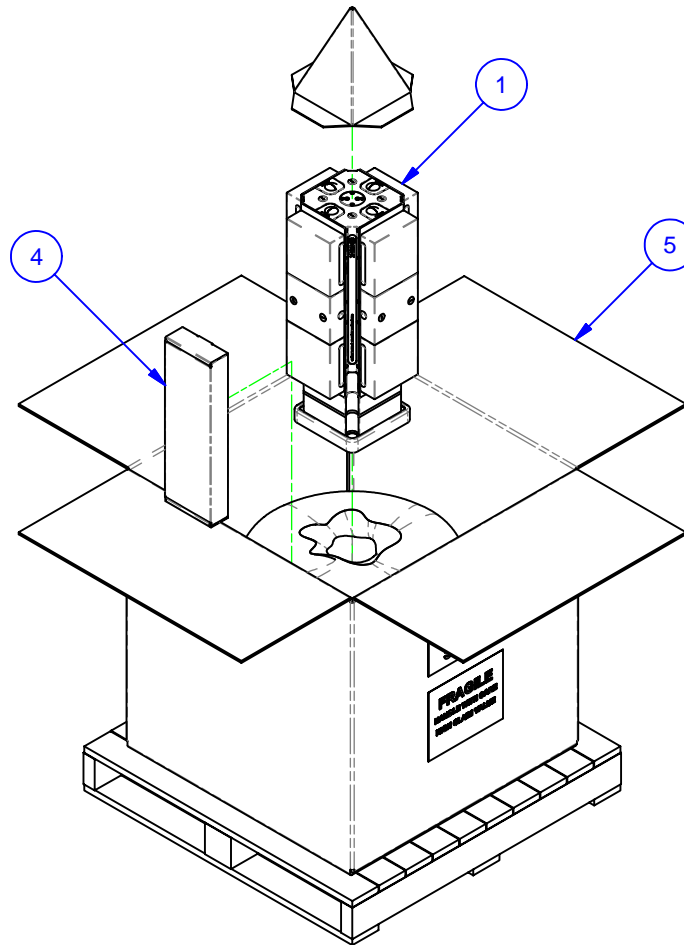

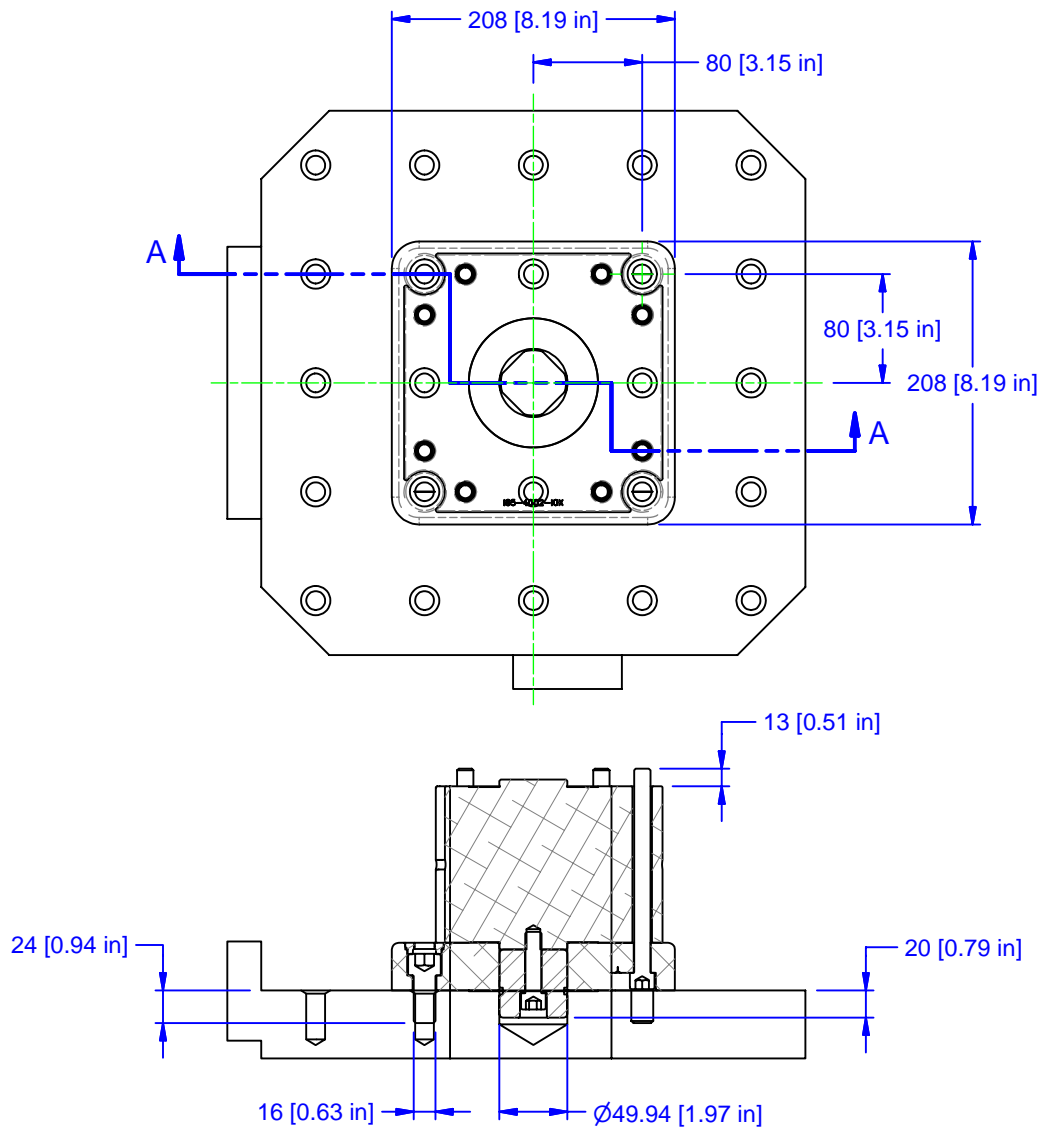


PARTS LIST						
No	QTY	PN	ITEM	TYPE	FAM	STYLE
1	1	186-1-10499	MULTI-LOK ASSEMBLY	208mm MET PALLET PLATE	5ML1550-41	115mm TALL RISER
2	1	185-2-10010	KIT	PP TO PALLET - MOD BP	S5-41	208/250mm METRIC (M16)
3	1	185-2-10028	KIT	PILOT PLUG	MODULAR BASEPLATE	CUSTOM 50mm, 50mm LONG
4	1	185-0-10002	KIT	TOOLS	5ML15-41	STANDARD
5	1	185-0-10006	PACKAGING	SHIPPING CONTAINER	HMC WORK PKG.	36x36x30 [M16 W/8" BOLTS]



MATERIAL: <a href="#">NA</a>	UNSPECIFIED TOLERANCES: X ±0.2 X.X ±0.1 X.XX ±0.05 ANGLES ±0.5° ALL DIMENSIONS ARE MILLIMETERS.	 (800) 332-4425 (724) 772-1644 <a href="http://www.ChickWorkholding.com">www.ChickWorkholding.com</a>	ITEM: <a href="#">WORK PKG - HMC</a>	
HARDNESS: <a href="#">NA</a>			TYPE: <a href="#">MATSUURA MAM-600HF_M-CE</a>	
COATING: <a href="#">NA</a>			FAM: <a href="#">5ML1550-41</a>	
WEIGHT: <a href="#">138703 g</a>			STYLE: <a href="#">208 SQ BASE X 650 TALL</a>	
COMMENTS:			TDD	1 OF 4
		9/30/2008		



SECTION A-A

MATERIAL:	NA
HARDNESS:	NA
COATING:	NA
WEIGHT:	138703 g
COMMENTS:	

UNSPECIFIED TOLERANCES:  
 X ±0.2  
 X.X ±0.1  
 X.XX ±0.05  
 ANGLES ±0.5°  
 ALL DIMENSIONS ARE MILLIMETERS.

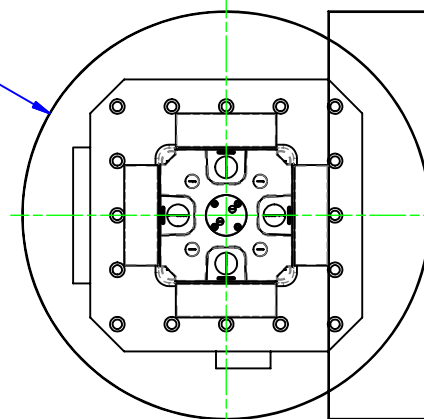
**CHICK** (800) 332-4425  
 (724) 772-1644  
[www.ChickWorkholding.com](http://www.ChickWorkholding.com)

UNSPECIFIED EDGES: BREAK 0.3 TO 0.8  
 UNSPECIFIED FILLETS: RADIUS 0.3 MAX

ITEM:	WORK PKG - HMC		
TYPE:	MATSUURA MAM-600HF_M-CE		
FAM:	5ML1550-41		
STYLE:	208 SQ BASE X 650 TALL		

TDD	2 OF 4	5HP-MATS-00065	REV A
9/30/2008			

Ø600 [23.62 in]  
MAXIMUM  
WORKPIECE  
SWING



150 [5.91 in]

625 [24.61 in]  
Z-TRAVEL

300 [11.81 in]

600 [23.62 in]  
X-TRAVEL

700 [27.56 in]  
MAXIMUM  
WORKPIECE  
HEIGHT

650 [25.59 in]

150 [5.91 in]

400 [15.75 in]

600 [23.62 in]  
Y-TRAVEL

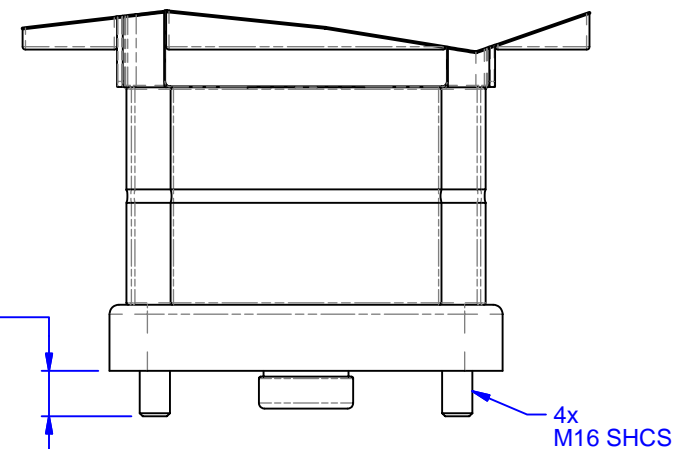
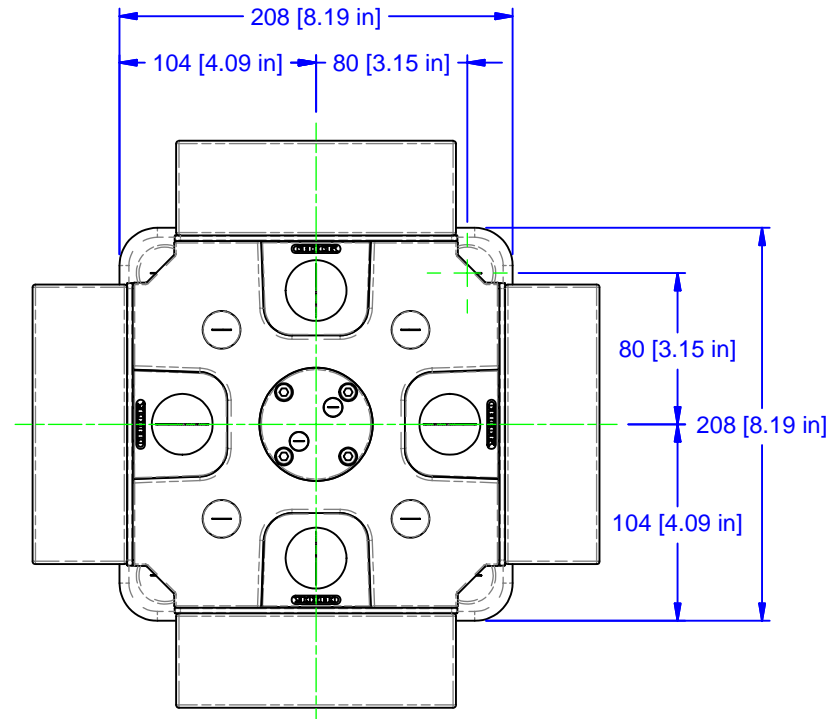
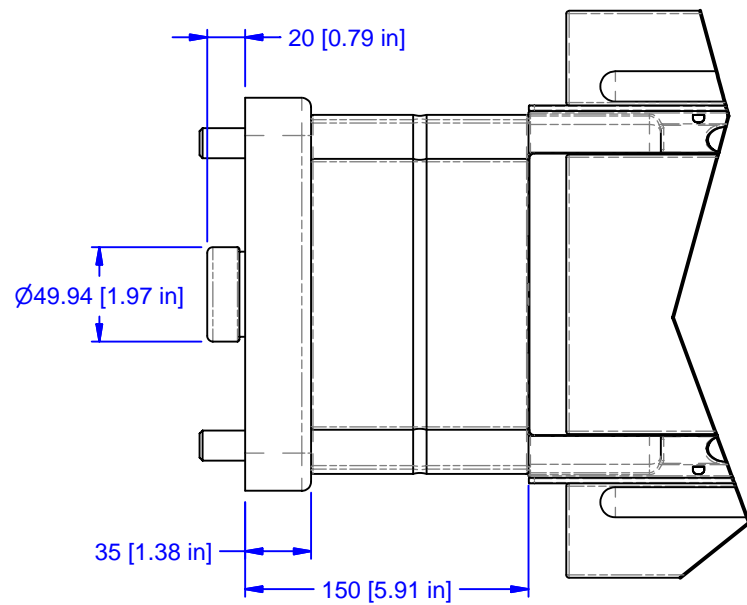
80 [3.15 in]

MATERIAL:	NA
HARDNESS:	NA
COATING:	NA
WEIGHT:	138703 g
COMMENTS:	

UNSPECIFIED TOLERANCES:  
 X ±0.2  
 X.X ±0.1  
 X.XX ±0.05  
 ANGLES ±0.5°  
 ALL DIMENSIONS ARE MILLIMETERS.

**CHICK** (800) 332-4425  
 (724) 772-1644  
[www.ChickWorkholding.com](http://www.ChickWorkholding.com)  
 UNSPECIFIED EDGES: BREAK 0.3 TO 0.8  
 UNSPECIFIED FILLETS: RADIUS 0.3 MAX

ITEM:	WORK PKG - HMC		
TYPE:	MATSUURA MAM-600HF_M-CE		
FAM:	5ML1550-41		
STYLE:	208 SQ BASE X 650 TALL		
TDD	3 OF 4	5HP-MATS-00065	REV A
9/30/2008			



MATERIAL:	NA
HARDNESS:	NA
COATING:	NA
WEIGHT:	138703 g
COMMENTS:	

UNSPECIFIED TOLERANCES:  
 X ±0.2  
 X.X ±0.1  
 X.XX ±0.05  
 ANGLES ±0.5°  
 ALL DIMENSIONS ARE MILLIMETERS.

**CHICK** (800) 332-4425  
 (724) 772-1644  
[www.ChickWorkholding.com](http://www.ChickWorkholding.com)  
 UNSPECIFIED EDGES: BREAK 0.3 TO 0.8  
 UNSPECIFIED FILLETS: RADIUS 0.3 MAX

ITEM: WORK PKG - HMC		REV A
TYPE: MATSUURA MAM-600HF_M-CE		
FAM: 5ML1550-41		5HP-MATS-00065
STYLE: 208 SQ BASE X 650 TALL		
TDD	4 OF 4	
9/30/2008		