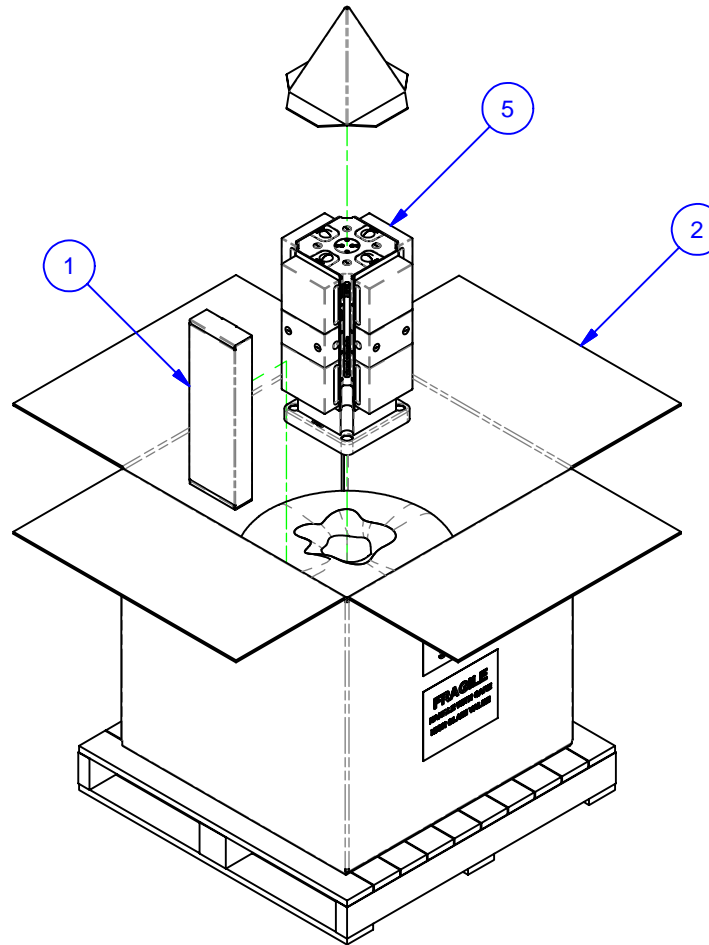


PARTS LIST						
No	QTY	PN	ITEM	TYPE	FAM	STYLE
1	1	185-0-10002	KIT	TOOLS	5ML15-41	STANDARD
2	1	185-0-10006	PACKAGING	SHIPPING CONTAINER	HMC WORK PKG.	36x36x30 [M16 W/8" BOLTS]
3	1	185-2-10011	KIT	PP TO PALLET - MOD BP	S5-41	208/250mm METRIC (5/8-11)
4	1	185-2-10068	KIT	PILOT	MODULAR BASEPLATE	2"
5	1	186-1-11548	MULTI-LOK ASSEMBLY	MATSUURA MC-600H	5ML1540-41	225 SQ BASE X 510 TALL

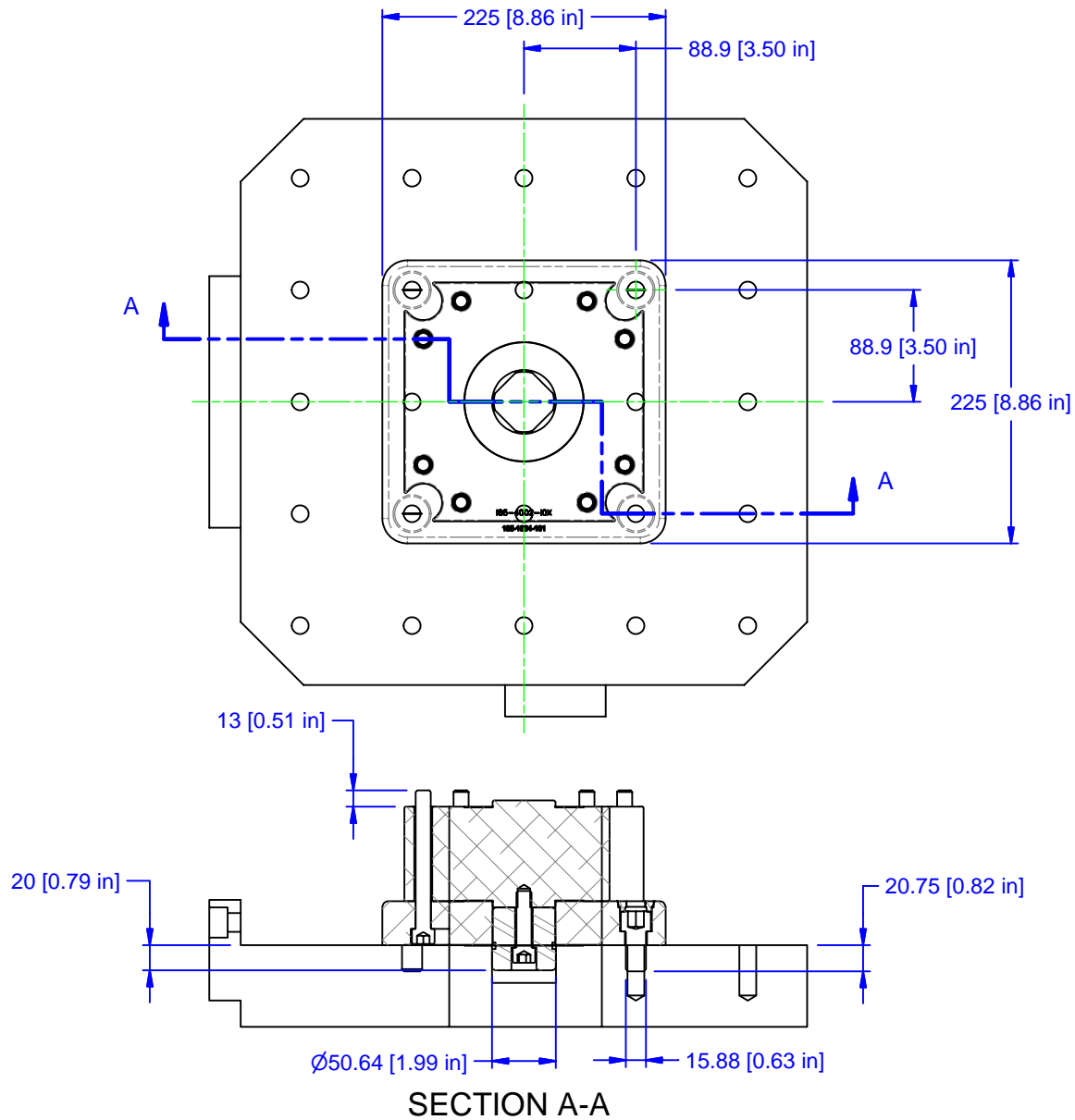


MATERIAL: NA
HARDNESS: NA
COATING: NA
WEIGHT: 118796 g
COMMENTS:

UNSPECIFIED TOLERANCES:
 X ±0.2
 X.X ±0.1
 X.XX ±0.05
 ANGLES ±0.5°
 ALL DIMENSIONS ARE MILLIMETERS.

CHICK (800) 332-4425
 (724) 772-1644
www.ChickWorkholding.com
 UNSPECIFIED EDGES: BREAK 0.3 TO 0.8
 UNSPECIFIED FILLETS: RADIUS 0.3 MAX

ITEM: WORK PKG - HMC			
TYPE: MATSUURA MC-600H_I-(C)E			
FAM: 5ML1540-41			
STYLE: 225 SQ BASE X 510 TALL			
TDD	1 OF 4	5HP-MATS-00170	REV
3/26/2010			A



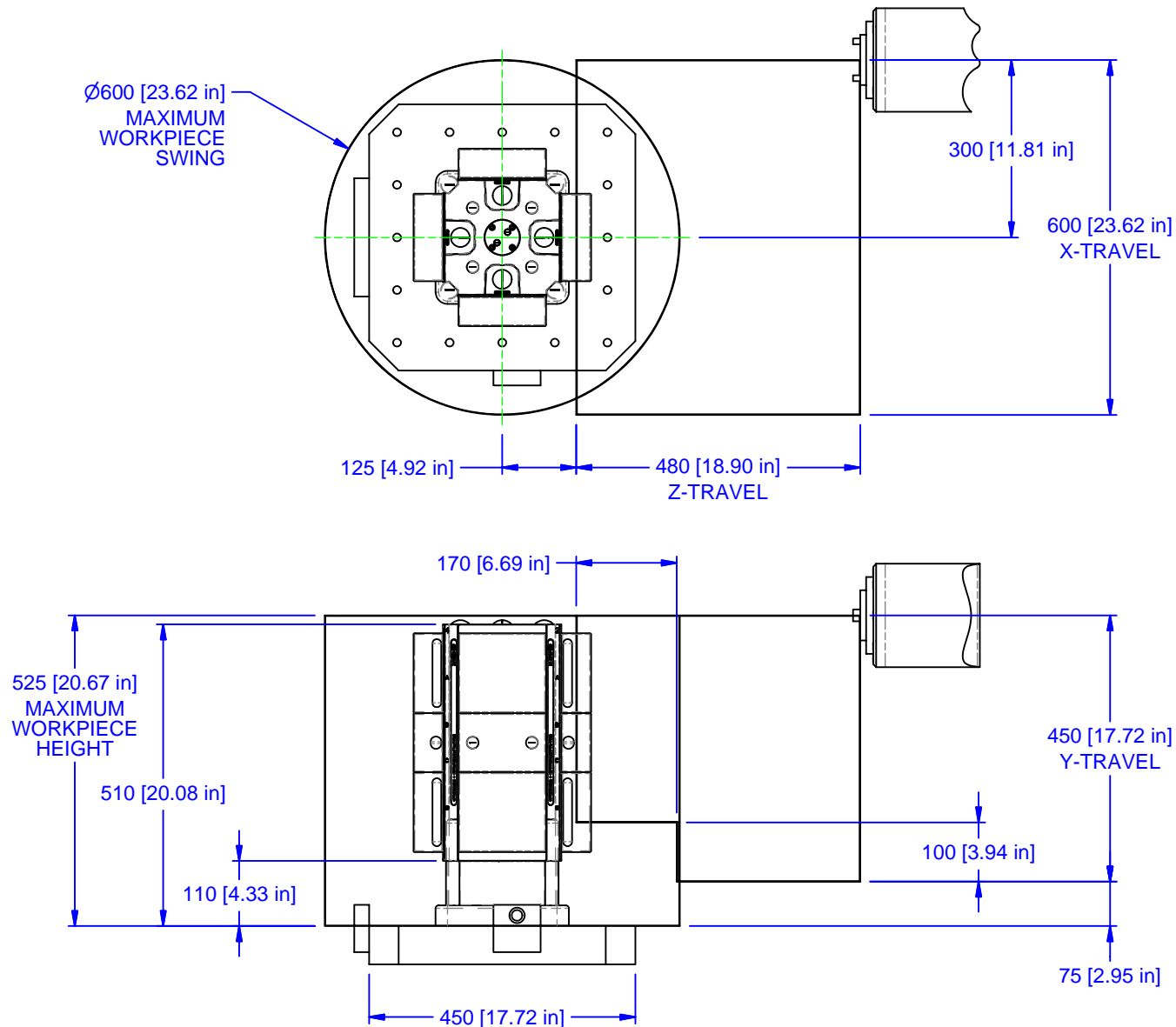
SECTION A-A

MATERIAL: NA
HARDNESS: NA
COATING: NA
WEIGHT: 118796 g
COMMENTS:

UNSPECIFIED TOLERANCES:
 X ±0.2
 X.X ±0.1
 X.XX ±0.05
 ANGLES ±0.5°
 ALL DIMENSIONS ARE MILLIMETERS.

CHICK (800) 332-4425
 (724) 772-1644
www.ChickWorkholding.com
 UNSPECIFIED EDGES: BREAK 0.3 TO 0.8
 UNSPECIFIED FILLETS: RADIUS 0.3 MAX

ITEM: WORK PKG - HMC		REV A
TYPE: MATSUURA MC-600H_I-(C)E		
FAM: 5ML1540-41		SHP-MATS-00170
STYLE: 225 SQ BASE X 510 TALL		
TDD	2 OF 4	
3/26/2010		



MATERIAL: NA
HARDNESS: NA
COATING: NA
WEIGHT: 118796 g
COMMENTS:

UNSPECIFIED TOLERANCES:

X ± 0.2

X.X ± 0.1

X.XX ± 0.05

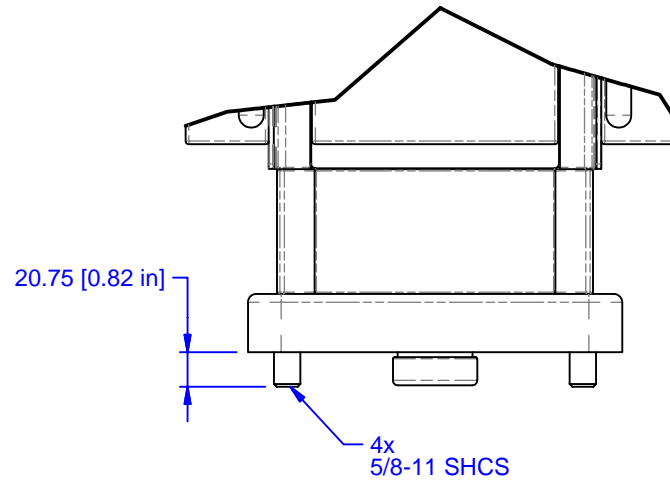
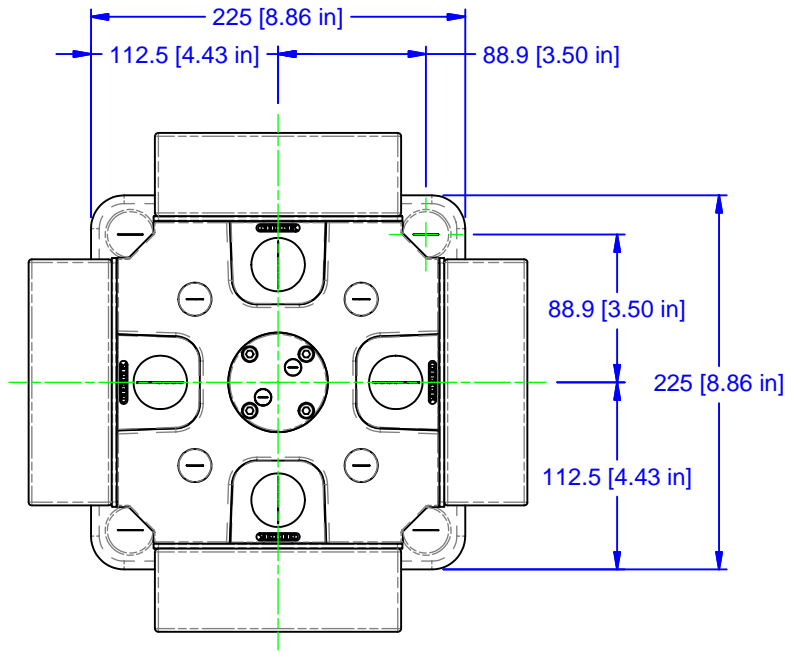
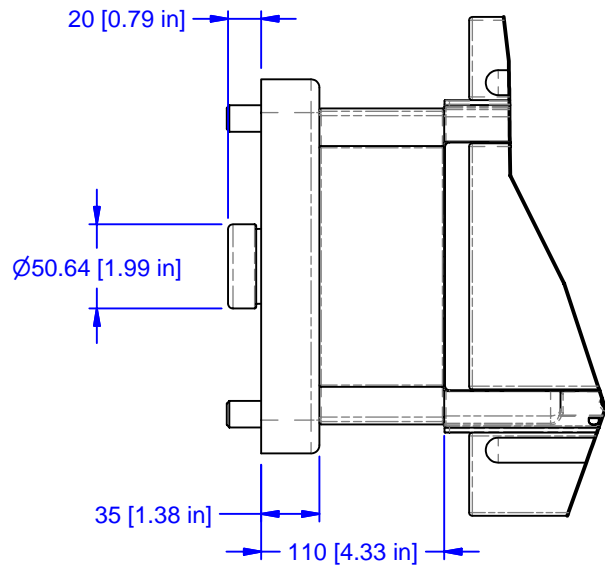
ANGLES $\pm 0.5^\circ$

ALL DIMENSIONS ARE MILLIMETERS.

CHICK (800) 332-4425
 (724) 772-1644
www.ChickWorkholding.com

UNSPECIFIED EDGES: BREAK 0.3 TO 0.8
 UNSPECIFIED FILLETS: RADIUS 0.3 MAX

ITEM: WORK PKG - HMC	REV
TYPE: MATSUURA MC-600H_I-(C)E	A
FAM: 5ML1540-41	
STYLE: 225 SQ BASE X 510 TALL	
TDD	3 OF 4
3/26/2010	5HP-MATS-00170



MATERIAL: NA
HARDNESS: NA
COATING: NA
WEIGHT: 118796 g
COMMENTS:

UNSPECIFIED TOLERANCES:
 X ±0.2
 X.X ±0.1
 X.XX ±0.05
 ANGLES ±0.5°
 ALL DIMENSIONS ARE MILLIMETERS.

CHICK (800) 332-4425
 (724) 772-1644
www.ChickWorkholding.com
 UNSPECIFIED EDGES: BREAK 0.3 TO 0.8
 UNSPECIFIED FILLETS: RADIUS 0.3 MAX

ITEM: WORK PKG - HMC		REV A
TYPE: MATSUURA MC-600H_I-(C)E		
FAM: 5ML1540-41		SHP-MATS-00170
STYLE: 225 SQ BASE X 510 TALL		
TDD 3/26/2010	4 OF 4	