

## 5HP-MATS-00174

This workholding package is designed for your MATSUURA ES-450H (Metric) machining center.

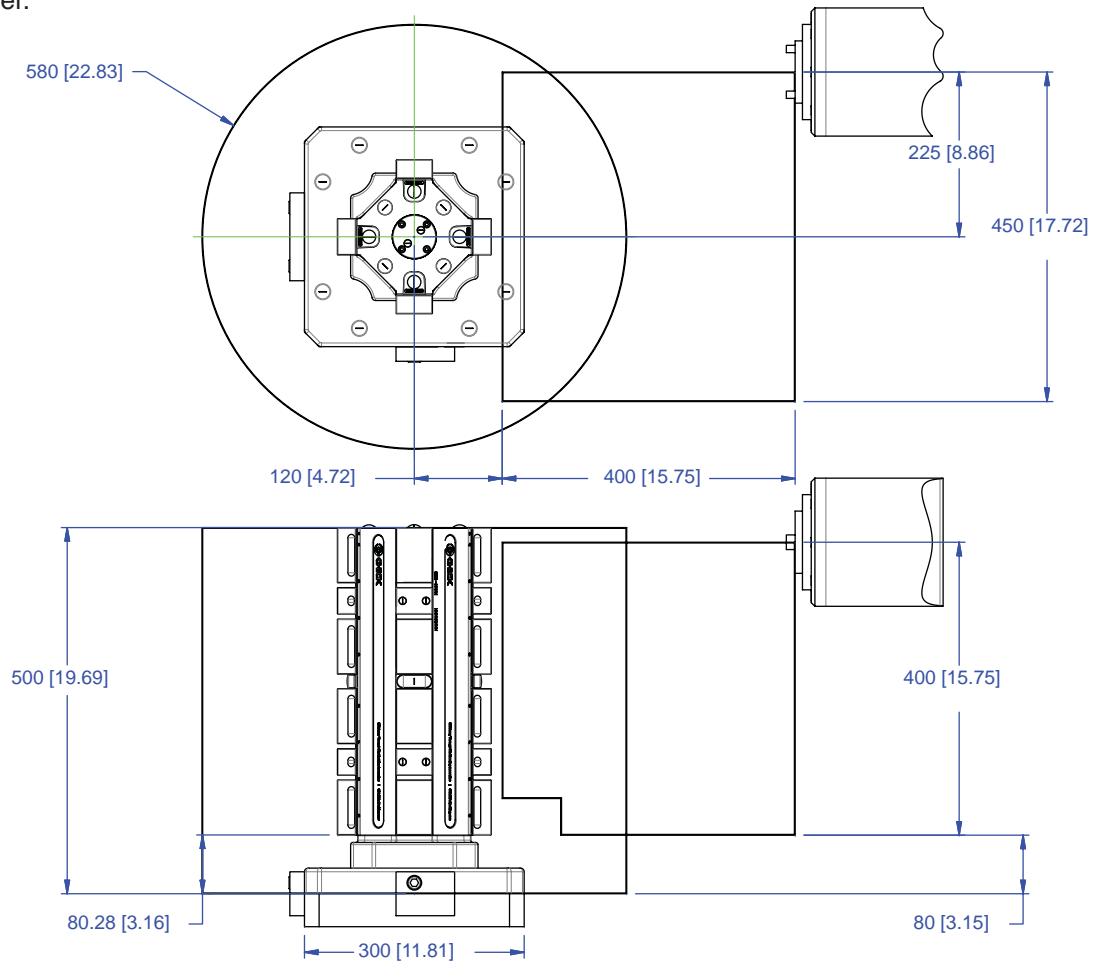


Notes

**CHICK WORKHOLDING SOLUTIONS, INC**  
500 Keystone Drive • Warrendale, PA 15086 USA  
Phone: (724) 772-1644 • Fax: (724) 772-1633  
Toll Free: (800) 33-CHICK • (800) 332-4425  
[www.ChickWorkholding.com](http://www.ChickWorkholding.com)

# 5HP-MATS-00174

This workholding package is designed for your MATSUURA ES-450H (Metric) machining center.



**Notes**

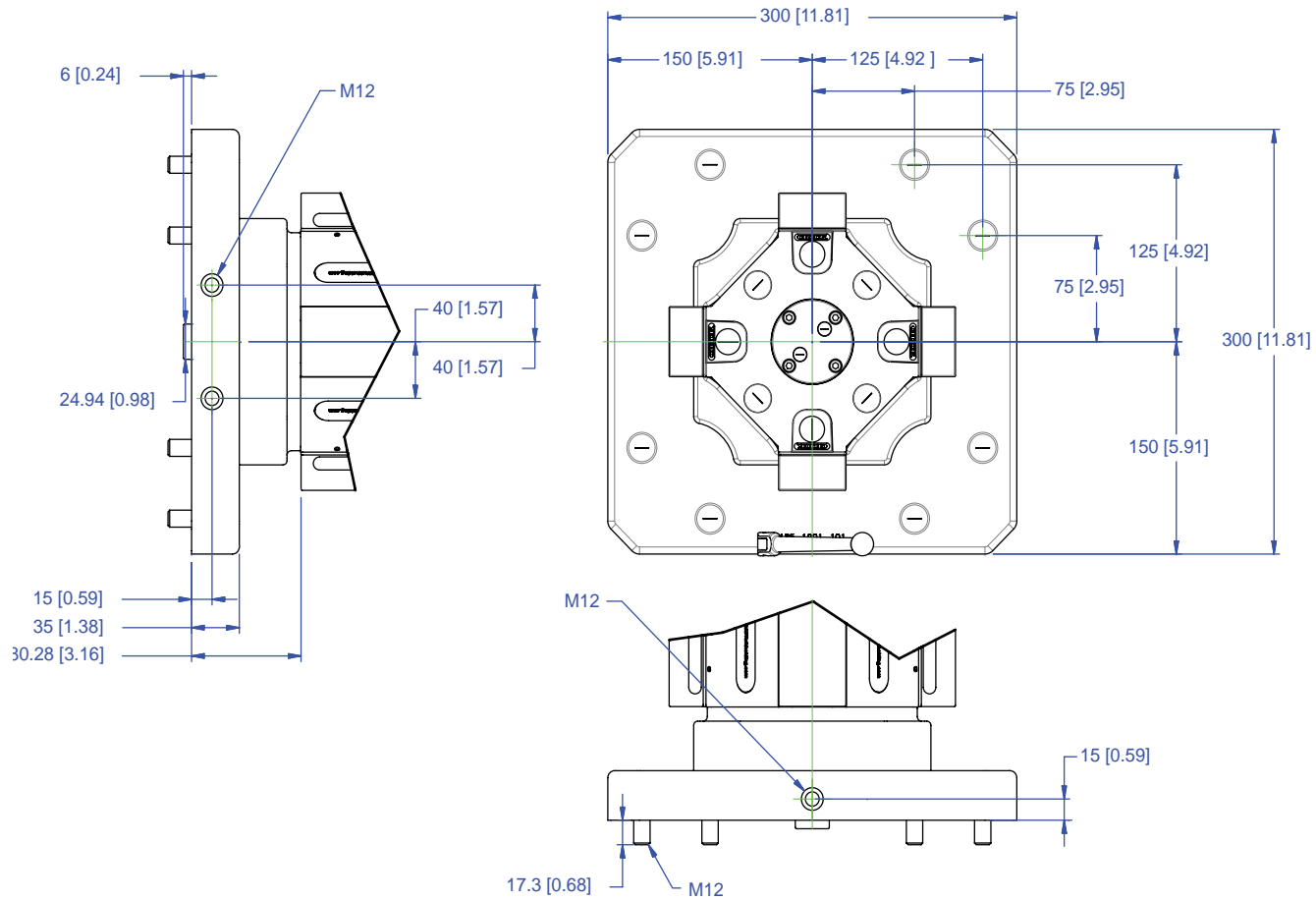
Machine travel may be limited by mechanical interference and/or machine safety zones. Please consult your machine's operating instructions for more information.

All dimensions are MM [IN]

**CHICK WORKHOLDING SOLUTIONS, INC**  
 500 Keystone Drive • Warrendale, PA 15086 USA  
 Phone: (724) 772-1644 • Fax: (724) 772-1633  
 Toll Free: (800) 33-CHICK • (800) 332-4425  
[www.ChickWorkholding.com](http://www.ChickWorkholding.com)

# 5HP-MATS-00174

This workholding package is designed for your MATSUURA ES-450H (Metric) machining center.



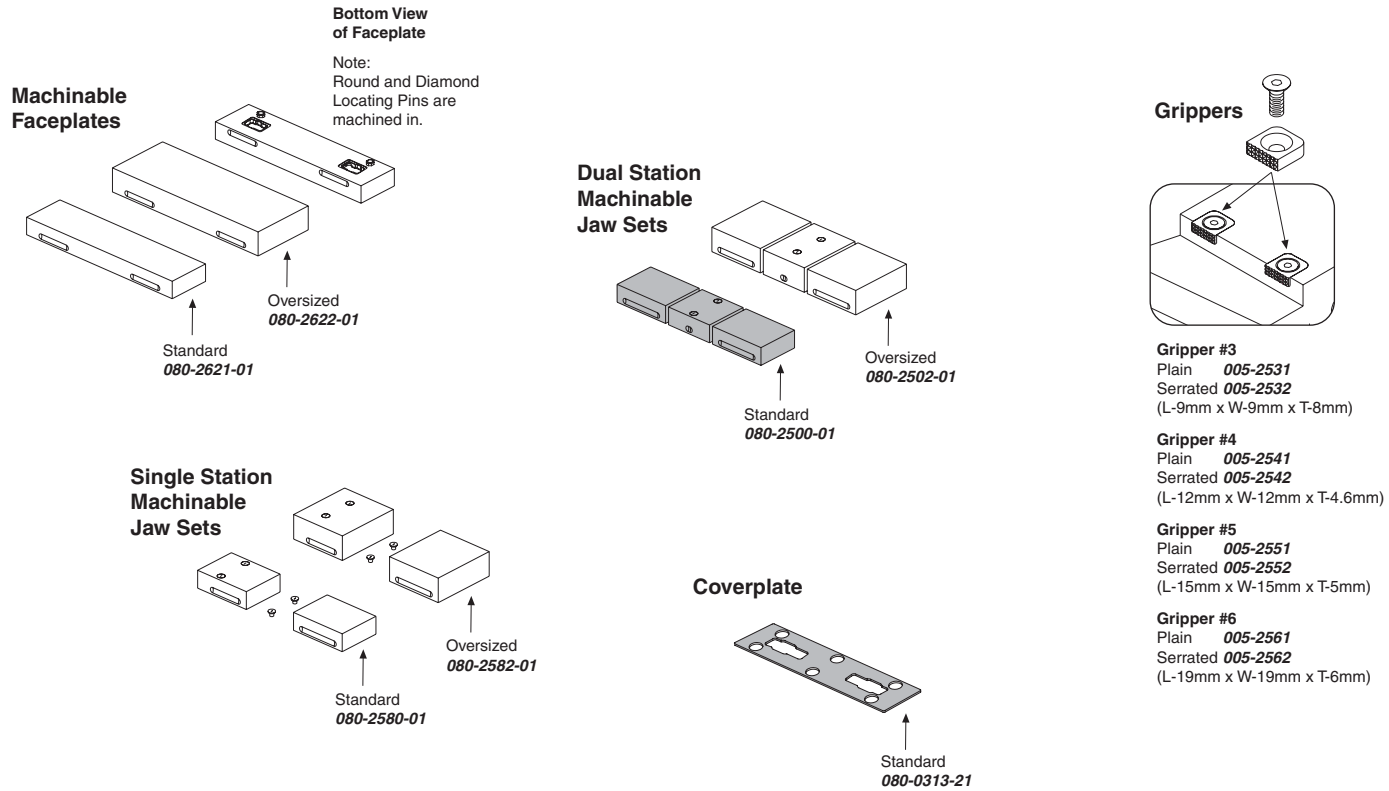
Notes

All dimensions are MM [IN]

**CHICK WORKHOLDING SOLUTIONS, INC**  
 500 Keystone Drive • Warrendale, PA 15086 USA  
 Phone: (724) 772-1644 • Fax: (724) 772-1633  
 Toll Free: (800) 33-CHICK • (800) 332-4425  
[www.ChickWorkholding.com](http://www.ChickWorkholding.com)

## Batch Production

Machinable accessories are the optimal solution for batch production. They offer QwikChange™ and accurate repeat set ups to optimize the productivity of the machine center.



**Notes**

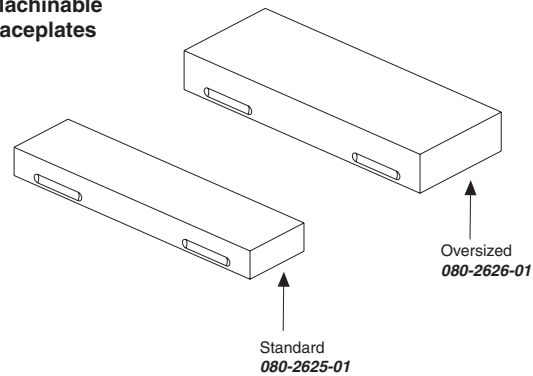
Grey item is included with a standard system

**CHICK WORKHOLDING SOLUTIONS, INC**  
 500 Keystone Drive • Warrendale, PA 15086 USA  
 Phone: (724) 772-1644 • Fax: (724) 772-1633  
 Toll Free: (800) 33-CHICK • (800) 332-4425  
[www.ChickWorkholding.com](http://www.ChickWorkholding.com)

## Dedicated Fixturing

Machinable Faceplates provide QwikChange™ dedicated fixturing and are optimal for awkward or hard to hold parts. A mini pallet changer can be created by utilizing two Faceplates in tandem.

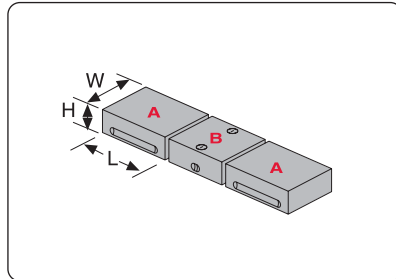
### Machinable Faceplates



Notes

**CHICK WORKHOLDING SOLUTIONS, INC**  
500 Keystone Drive • Warrendale, PA 15086 USA  
Phone: (724) 772-1644 • Fax: (724) 772-1633  
Toll Free: (800) 33-CHICK • (800) 332-4425  
[www.ChickWorkholding.com](http://www.ChickWorkholding.com)

**QwikChange Machinable  
Dual Station Jaws**



**Individual Dual Station Jaws**

Standard

**A** Moveable Jaw ..... **080-2511-01**  
(W49mm, H25mm, L75mm)

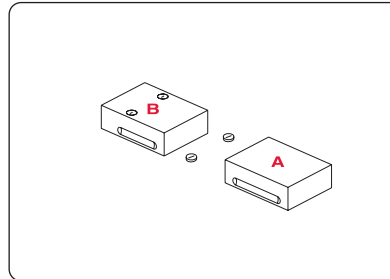
**B** Fixed Jaw ..... **080-2551-01**  
(W49mm, H25mm, L36mm)

Oversized

**A** Moveable Jaw ..... **080-2512-01**  
(W80mm, H35mm, L75mm)

**B** Fixed Jaw ..... **080-2522-01**  
(W80mm, H35mm, L36mm)

**QwikChange Machinable  
Single Station Jaws**



**Individual Single Station Jaws**

Standard

**A** Moveable Jaw ..... **080-2511-01**  
(W49mm, H25mm, L75mm)

**B** Fixed Jaw ..... **080-2571-01**  
(W49mm, H25mm, L75mm)

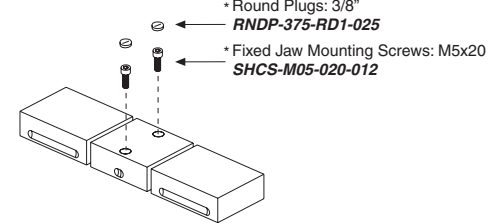
Oversized

**A** Moveable Jaw ..... **080-2512-01**  
(W80mm, H35mm, L75mm)

**B** Fixed Jaw ..... **080-2575-01**  
(W80mm, H35mm, L75mm)

**Screws and Plugs**

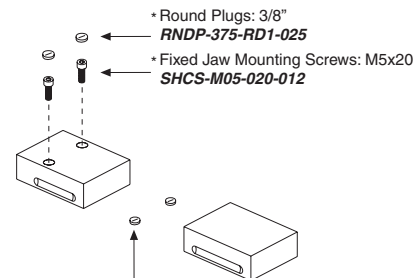
**Dual Station**



\* Round Plugs: 3/8"  
**RNDP-375-RD1-025**

\* Fixed Jaw Mounting Screws: M5x20  
**SHCS-M05-020-012**

**Single Station**



\* Round Plugs: 3/8"  
**RNDP-375-RD1-025**

\* Fixed Jaw Mounting Screws: M5x20  
**SHCS-M05-020-012**

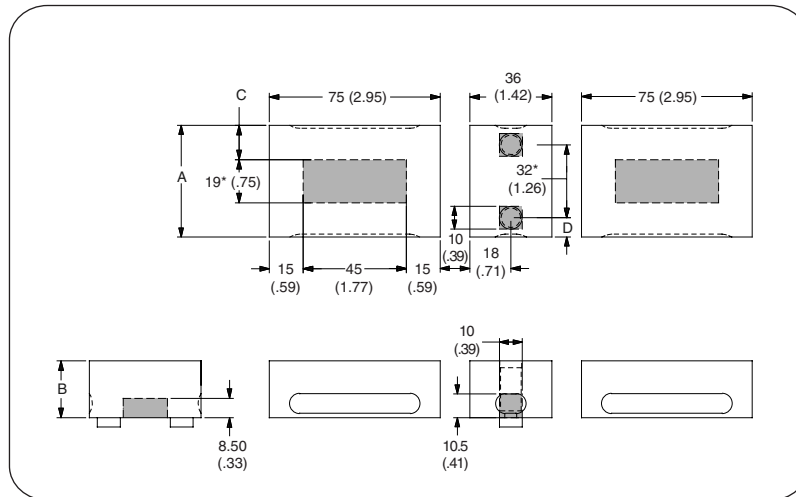
\* Round Plugs: 3/8"  
**RNDP-375-RD1-025**

**Notes**

Grey or \* item is included with a standard system

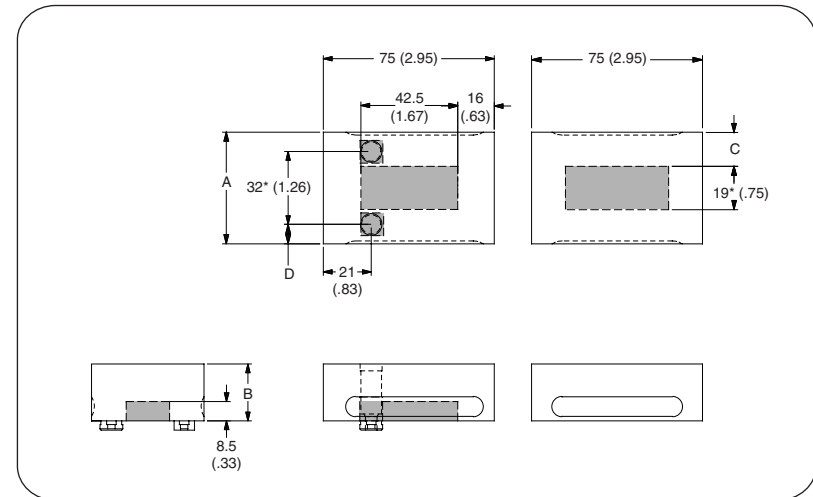
**CHICK WORKHOLDING SOLUTIONS, INC**  
500 Keystone Drive • Warrendale, PA 15086 USA  
Phone: (724) 772-1644 • Fax: (724) 772-1633  
Toll Free: (800) 33-CHICK • (800) 332-4425  
www.ChickWorkholding.com

Dual Station



Item Number	Description	A	B	C	D
080-2500	Standard	49 (1.93)	25 (.98)	15 (.59)	8.5 (.33)
080-2502	Oversized	80 (3.15)	35 (1.38)	30.5 (1.20)	24 (.94)

Single Station



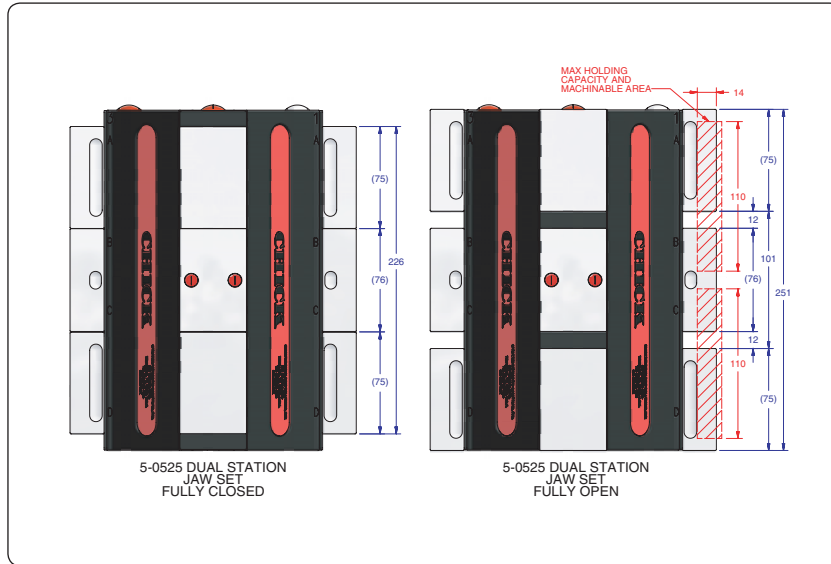
Item Number	Description	A	B	C	D
080-2580	Standard	49 (1.93)	25 (.98)	15 (.59)	8.5 (.33)
080-2582	Oversized	80 (3.15)	35 (1.38)	30.5 (1.20)	24 (.94)

Notes

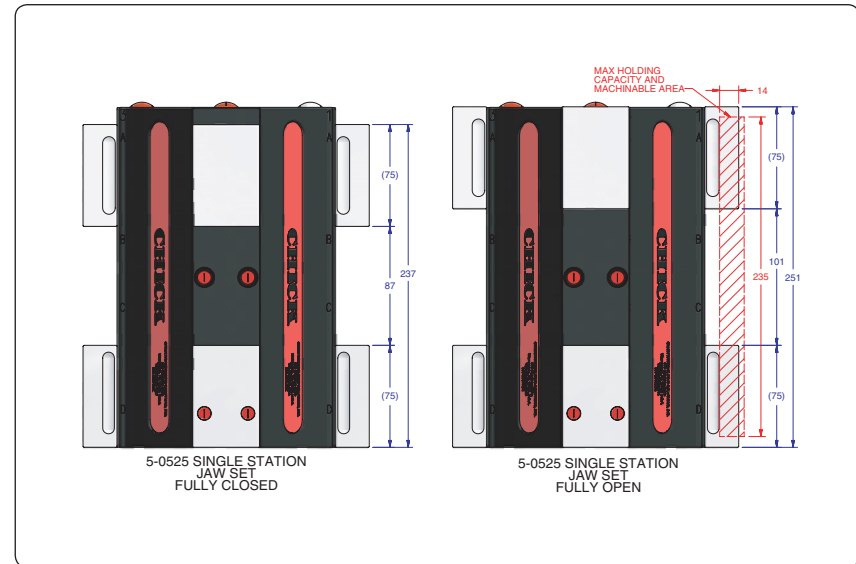
Grey area indicates no cut zone  
 All dimensions are MM [IN]  
 Dimensions centered on the "A" dimension.

**CHICK WORKHOLDING SOLUTIONS, INC**  
 500 Keystone Drive • Warrendale, PA 15086 USA  
 Phone: (724) 772-1644 • Fax: (724) 772-1633  
 Toll Free: (800) 33-CHICK • (800) 332-4425  
[www.ChickWorkholding.com](http://www.ChickWorkholding.com)

**Dual Station**



**Single Station**



Item Number	Description	A	Jaw Width
<b>080-2500</b>	Standard	14 [0.57]	49 [1.93]
<b>080-2506</b>	Oversized	24 [0.96]	80 [3.15]

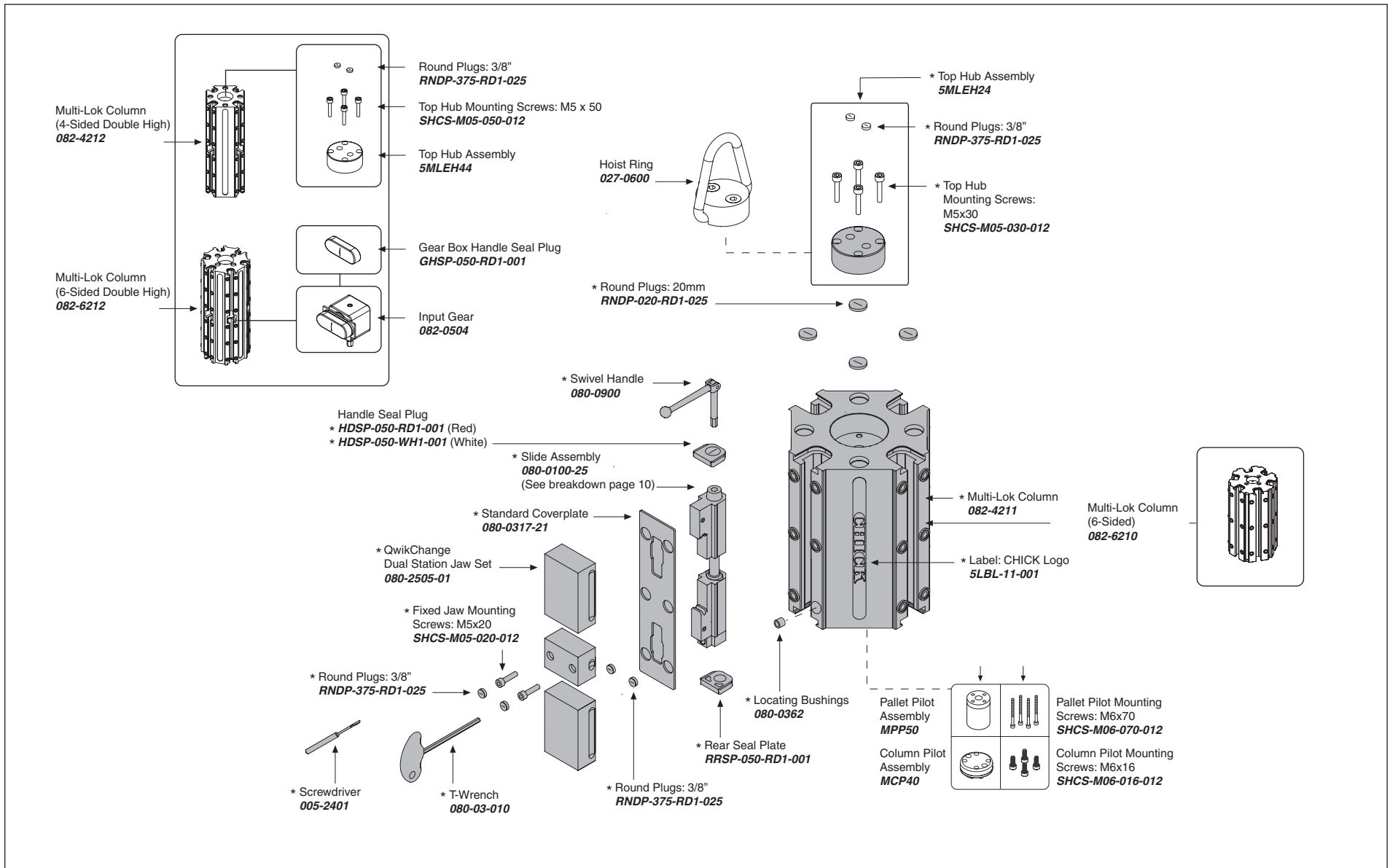
Item Number	Description	A	Jaw Width
<b>080-2580</b>	Standard	14 [0.57]	49 [1.93]
<b>080-2582</b>	Oversized	24 [0.96]	80 [3.15]

**Notes**

All dimensions are MM [IN]  
 Additional closure is available with an Extended Travel Coverplate.  
 Contact CHICK for details.

**CHICK WORKHOLDING SOLUTIONS, INC**  
 500 Keystone Drive • Warrendale, PA 15086 USA  
 Phone: (724) 772-1644 • Fax: (724) 772-1633  
 Toll Free: (800) 33-CHICK • (800) 332-4425  
[www.ChickWorkholding.com](http://www.ChickWorkholding.com)

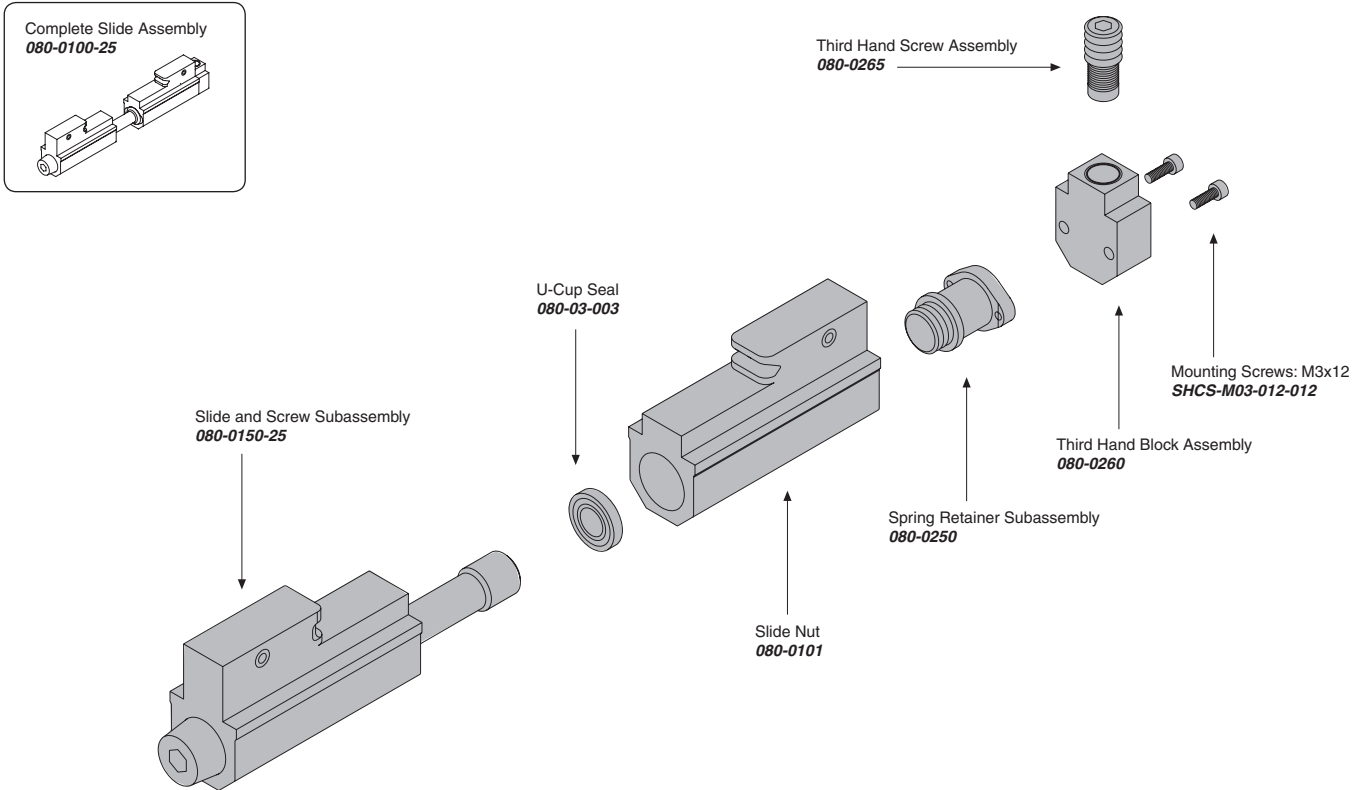




### Notes

Grey items are included with a standard system  
 For QwikChange™ Jaw accessories, see pages 4-6

**CHICK WORKHOLDING SOLUTIONS, INC**  
 500 Keystone Drive • Warrendale, PA 15086 USA  
 Phone: (724) 772-1644 • Fax: (724) 772-1633  
 Toll Free: (800) 33-CHICK • (800) 332-4425  
[www.ChickWorkholding.com](http://www.ChickWorkholding.com)



**Notes**

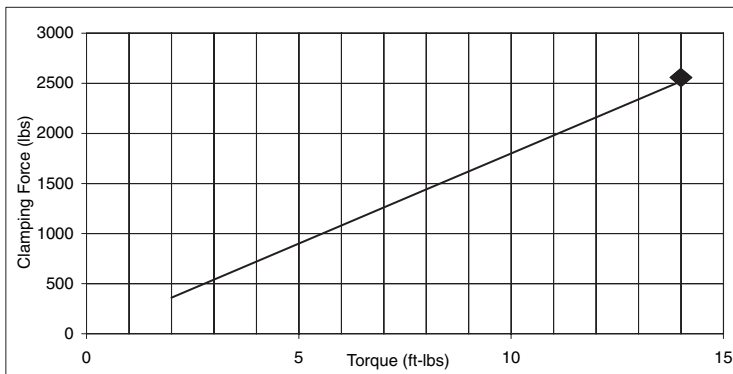
Grey items are included with a standard system

**CHICK WORKHOLDING SOLUTIONS, INC**  
 500 Keystone Drive • Warrendale, PA 15086 USA  
 Phone: (724) 772-1644 • Fax: (724) 772-1633  
 Toll Free: (800) 33-CHICK • (800) 332-4425  
[www.ChickWorkholding.com](http://www.ChickWorkholding.com)

**Pounds (lbs)**

Force	=	Torque	X	Slope
lbs	=	in-lb	x	15
lbs	=	ft-lbs	x	180

Torque (ft-lb)	Force (lbs)
0	0
2	360
4	720
6	1080
8	1440
10	1800
12	2160
14	2520

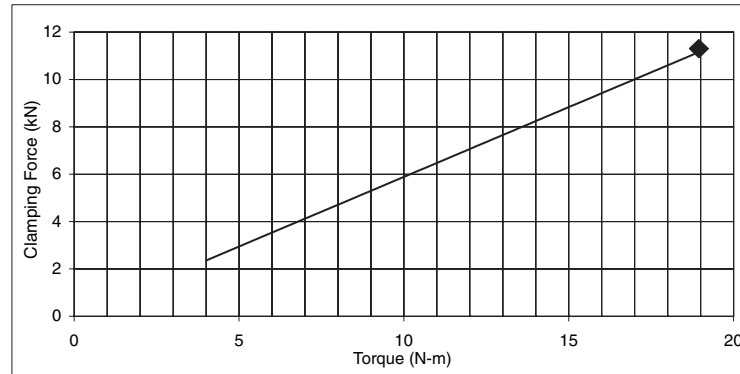


Note: ◆ Maximum Recommended Torque. Actual results may vary.

**Kilo Newtons (kN)**

Force	=	Torque	X	Slope
N	=	N-m	x	590
kN	=	N-m	x	0.59

Torque (N-m)	Force (kN)
0	0.0
4	2.4
8	4.7
12	7.1
14	8.2
18	10.6
19	11.2



Note: ◆ Maximum Recommended Torque. Actual results may vary.

Notes

**CHICK WORKHOLDING SOLUTIONS, INC**  
 500 Keystone Drive • Warrendale, PA 15086 USA  
 Phone: (724) 772-1644 • Fax: (724) 772-1633  
 Toll Free: (800) 33-CHICK • (800) 332-4425  
[www.ChickWorkholding.com](http://www.ChickWorkholding.com)