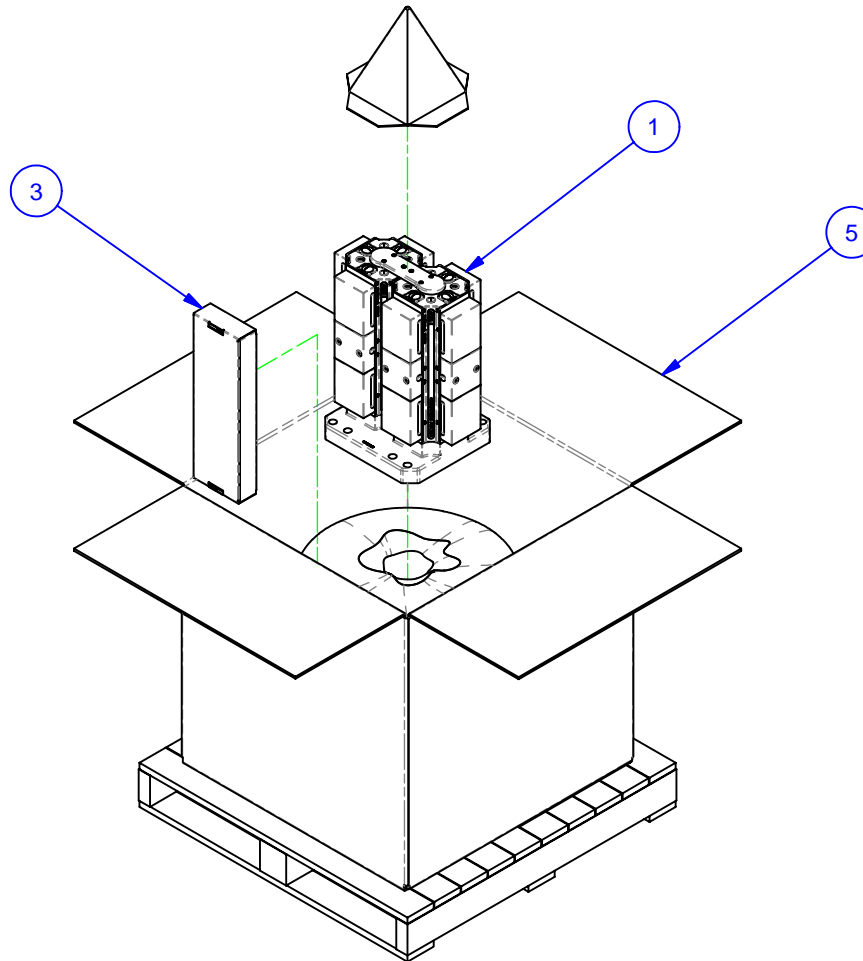


PARTS LIST						
No	QTY	PN	ITEM	TYPE	FAM	STYLE
1	1	188-1-10085	MULTI-LOK ASSY	5ML1040-41-12	MATSUURA MAM-500HF	318 X 300 X 480 TALL
2	1	058-2-10043	KIT	TSUGAMI	PILOT PLUG	1 INCH
3	1	185-0-10003	KIT	TOOLS	5ML10-41	STANDARD
5	1	185-0-10006	PACKAGING	SHIPPING CONTAINER	HMC WORK PKG.	36x36x30 [M16 W/8" BOLTS]
8	1	058-2-10070	KIT	BASEPLATE MOUNTING	1/2-13 TAPPED HOLE	(8) 1/2-13 X 1.5" SHCS

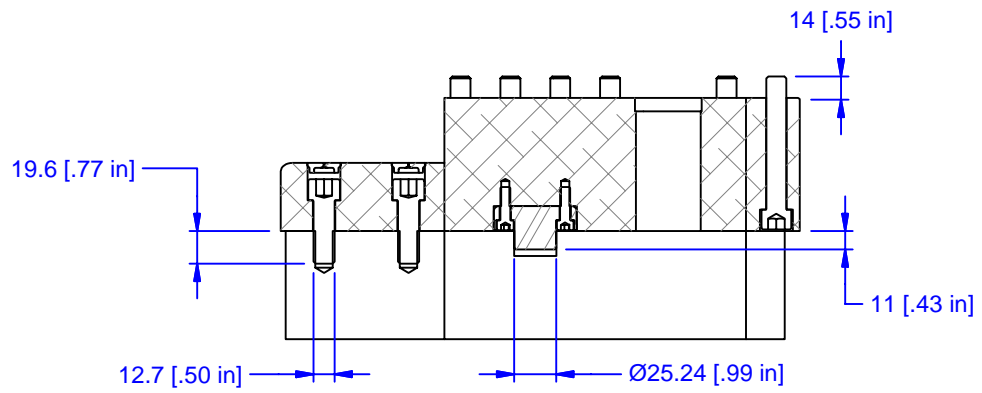
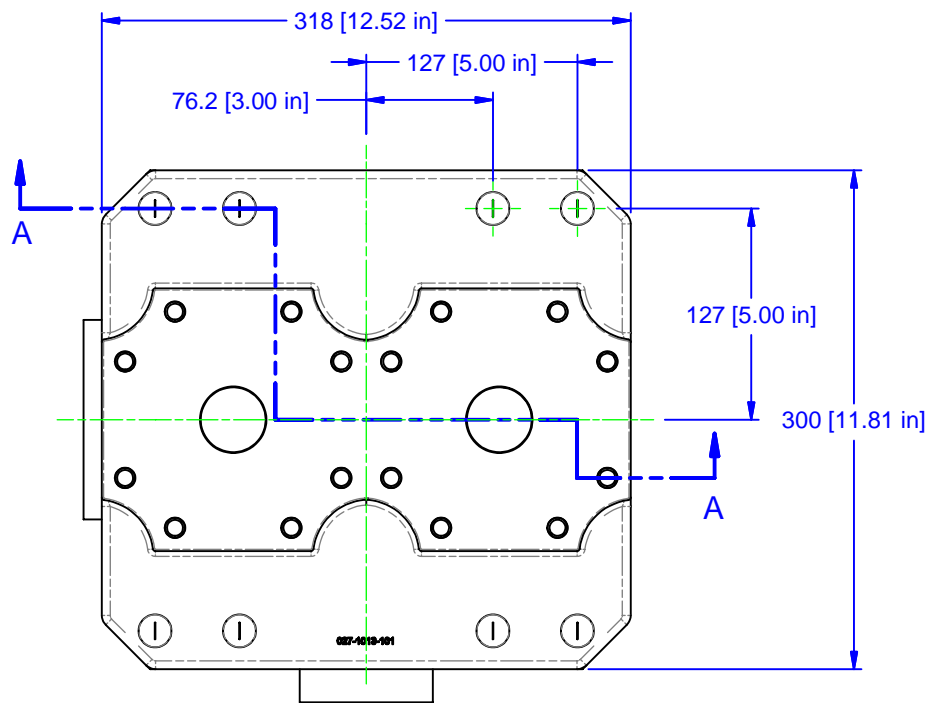


MATERIAL: NA
HARDNESS: NA
COATING: NA
WEIGHT: 115900 g
COMMENTS:


UNSPECIFIED TOLERANCES:
 X ±0.2
 X.X ±0.1
 X.XX ±0.05
 ANGLES ±0.5°
 ALL DIMENSIONS ARE MILLIMETERS.

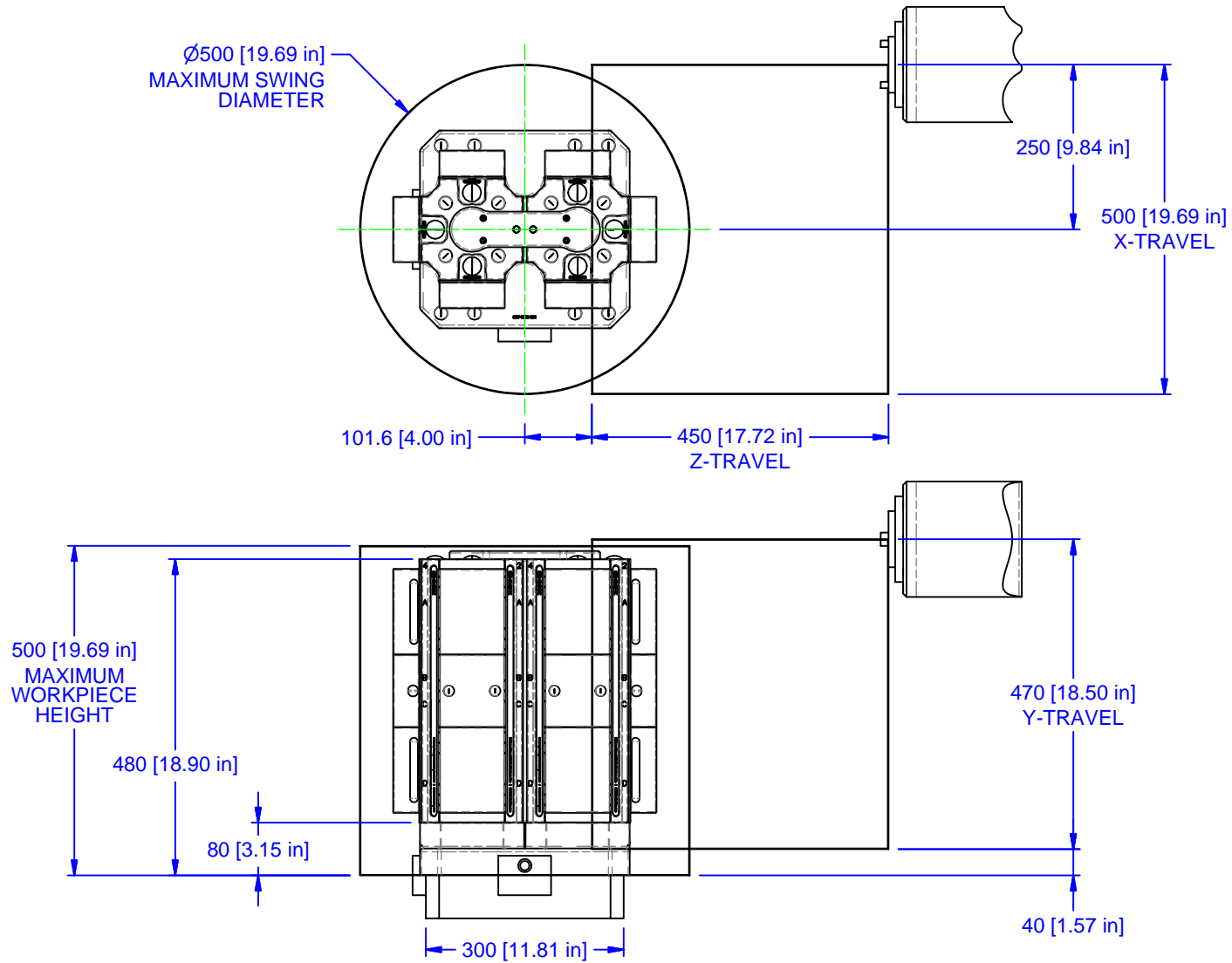
CHICK (800) 332-4425
 (724) 772-1644
www.ChickWorkholding.com
 UNSPECIFIED EDGES: BREAK 0.3 TO 0.8
 UNSPECIFIED FILLETS: RADIUS 0.3 MAX


ITEM: WORK PKG - HMC	REV
TYPE: MATSUURA MAM-500HF_I-CE	A
FAM: 5ML1040-41-12	
STYLE: 318 X 300 X 480 TALL	
BTG	1 OF 4
6/12/2008	5HP-MATS-00193

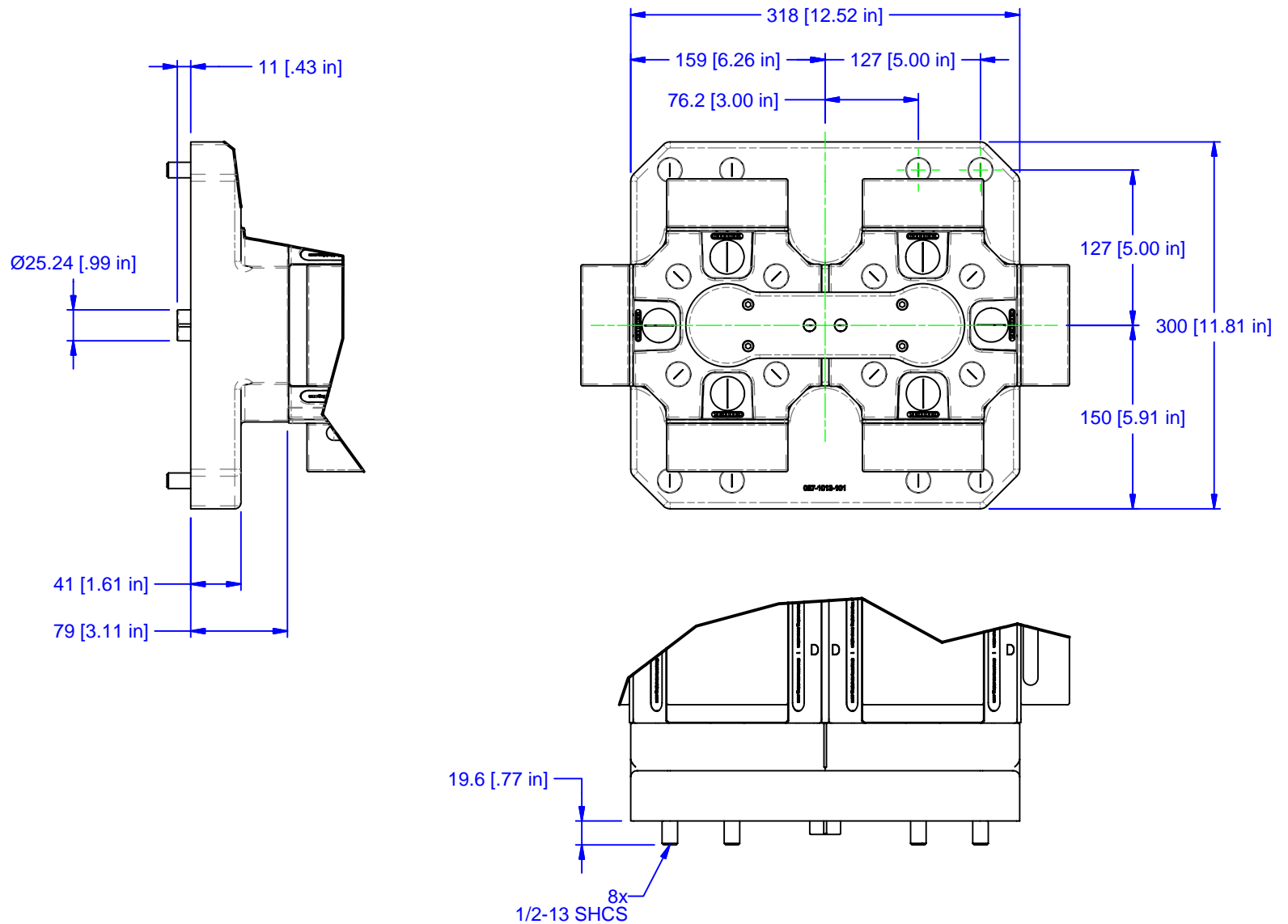


SECTION A-A

MATERIAL: NA	UNSPECIFIED TOLERANCES: X ±0.2 X.X ±0.1 X.XX ±0.05 ANGLES ±0.5° ALL DIMENSIONS ARE MILLIMETERS.	 (800) 332-4425 (724) 772-1644 www.ChickWorkholding.com	ITEM: WORK PKG - HMC		REV A
HARDNESS: NA			TYPE: MATSUURA MAM-500HF I-CE		
COATING: NA			FAM: 5ML1040-41-12		
WEIGHT: 115900 g			STYLE: 318 X 300 X 480 TALL		
COMMENTS:			BTG	2 OF 4	
		6/12/2008			



MATERIAL: NA	UNSPECIFIED TOLERANCES: X ± 0.2 X.X ± 0.1 X.XX ± 0.05 ANGLES $\pm 0.5^\circ$ ALL DIMENSIONS ARE MILLIMETERS.	 (800) 332-4425 (724) 772-1644 www.ChickWorkholding.com	ITEM: WORK PKG - HMC								
HARDNESS: NA			TYPE: MATSUURA MAM-500HF_I-CE								
COATING: NA			FAM: 5ML1040-41-12								
WEIGHT: 115900 g			STYLE: 318 X 300 X 480 TALL								
COMMENTS:			<table border="1"> <tr> <td>BTG</td> <td>3 OF 4</td> <td>5HP-MATS-00193</td> <td>REV</td> </tr> <tr> <td colspan="2">6/12/2008</td> <td></td> <td>A</td> </tr> </table>			BTG	3 OF 4	5HP-MATS-00193	REV	6/12/2008	
BTG	3 OF 4	5HP-MATS-00193	REV								
6/12/2008			A								



MATERIAL: NA
HARDNESS: NA
COATING: NA
WEIGHT: 115900 g
COMMENTS:

UNSPECIFIED TOLERANCES:
 X ± 0.2
 X.X ± 0.1
 X.XX ± 0.05
 ANGLES $\pm 0.5^\circ$
 ALL DIMENSIONS ARE MILLIMETERS.

CHICK (800) 332-4425
 (724) 772-1644
www.ChickWorkholding.com
 UNSPECIFIED EDGES: BREAK 0.3 TO 0.8
 UNSPECIFIED FILLETS: RADIUS 0.3 MAX

ITEM: WORK PKG - HMC	
TYPE: MATSUURA MAM-500HF_I-CE	
FAM: 5ML1040-41-12	
STYLE: 318 X 300 X 480 TALL	
BTG	4 OF 4
6/12/2008	5HP-MATS-00193
	REV A