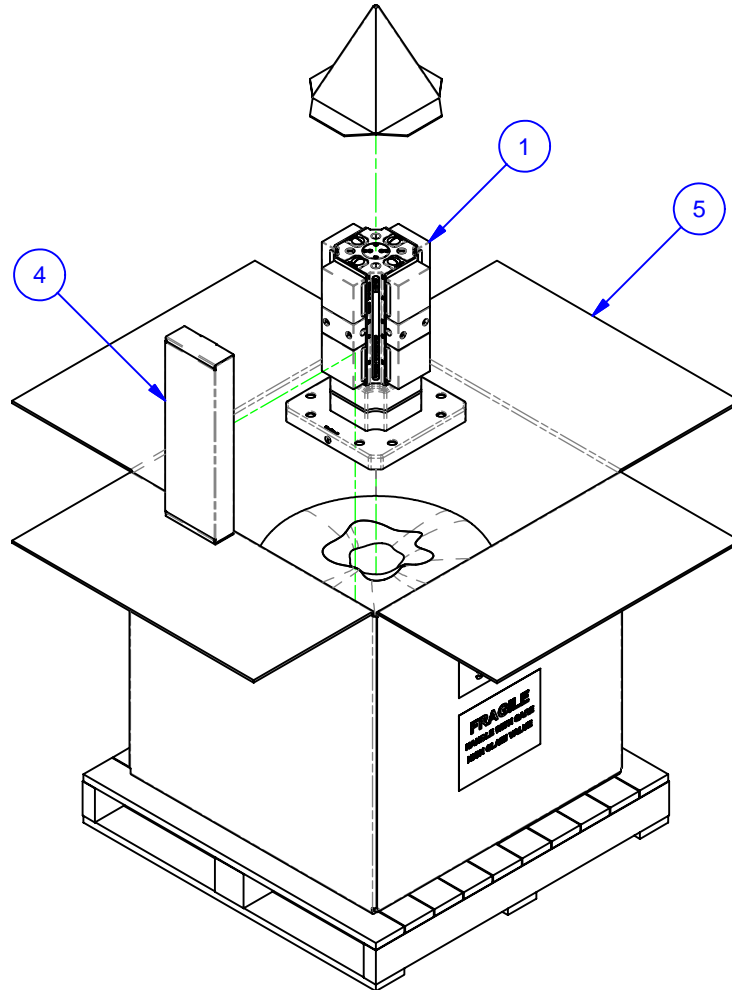


| PARTS LIST | | | | | | |
|------------|-----|-------------|--------------------|-----------------------|-------------------|---------------------------|
| No | QTY | PN | ITEM | TYPE | FAM | STYLE |
| 1 | 1 | 186-1-10213 | MULTI-LOK ASSEMBLY | SYSTEM 5 | 5ML1030-41 | 115mm RISER |
| 2 | 1 | 185-2-10005 | KIT | PP TO PALLET - MOD BP | S5-41 | 300mm INCH |
| 3 | 1 | 185-2-10018 | KIT | PILOT | MODULAR BASEPLATE | STANDARD 1" |
| 4 | 1 | 185-0-10003 | KIT | TOOLS | 5ML10-41 | STANDARD |
| 5 | 1 | 185-0-10005 | PACKAGING | SHIPPING CONTAINER | HMC WORK PKG. | 36x36x30 [M12 W/8" BOLTS] |



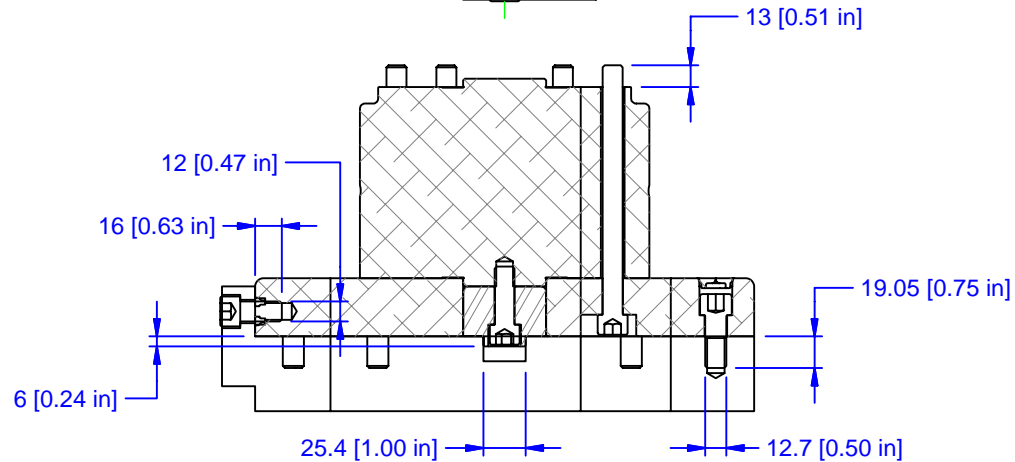
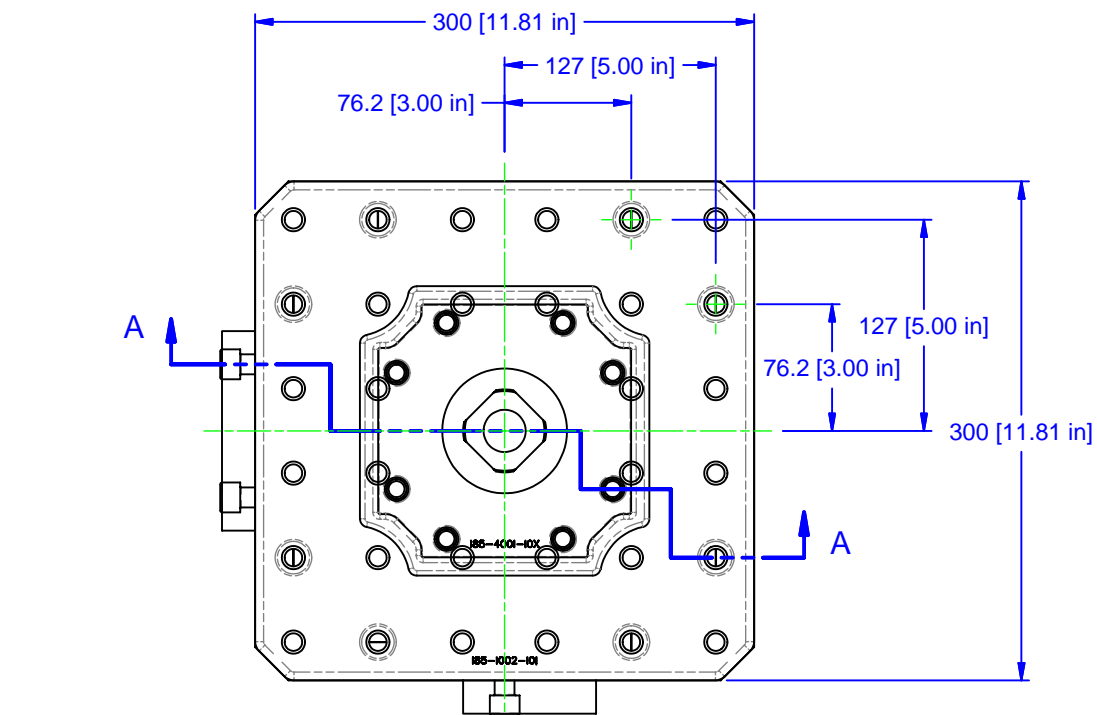
| |
|------------------------|
| MATERIAL: NA |
| HARDNESS: NA |
| COATING: NA |
| WEIGHT: 77670 g |
| COMMENTS: |

UNSPECIFIED TOLERANCES:
 X ±0.2
 X.X ±0.1
 X.XX ±0.05
 ANGLES ±0.5°
 ALL DIMENSIONS ARE MILLIMETERS.

CHICK (800) 332-4425
 (724) 772-1644
www.ChickWorkholding.com

UNSPECIFIED EDGES: BREAK 0.3 TO 0.8
 UNSPECIFIED FILLETS: RADIUS 0.3 MAX

| | |
|--------------------------------------|-----------------------|
| ITEM: WORK PKG - HMC | REV |
| TYPE: MATSUURA ES-450H_I-CE | A |
| FAM: 5ML1030-41 | |
| STYLE: 300 SQ BASE X 450 TALL | |
| TDD | 1 OF 4 |
| 8/13/2008 | 5HP-MATS-00205 |



SECTION A-A

| |
|------------------------|
| MATERIAL: NA |
| HARDNESS: NA |
| COATING: NA |
| WEIGHT: 77670 g |
| COMMENTS: |

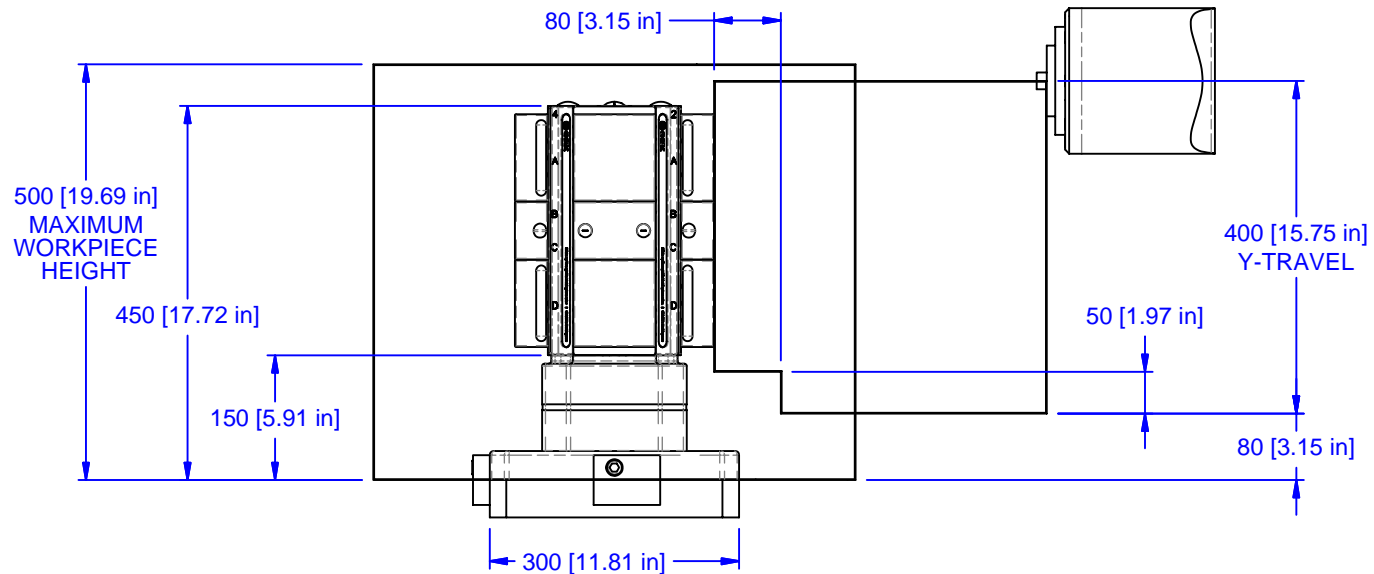
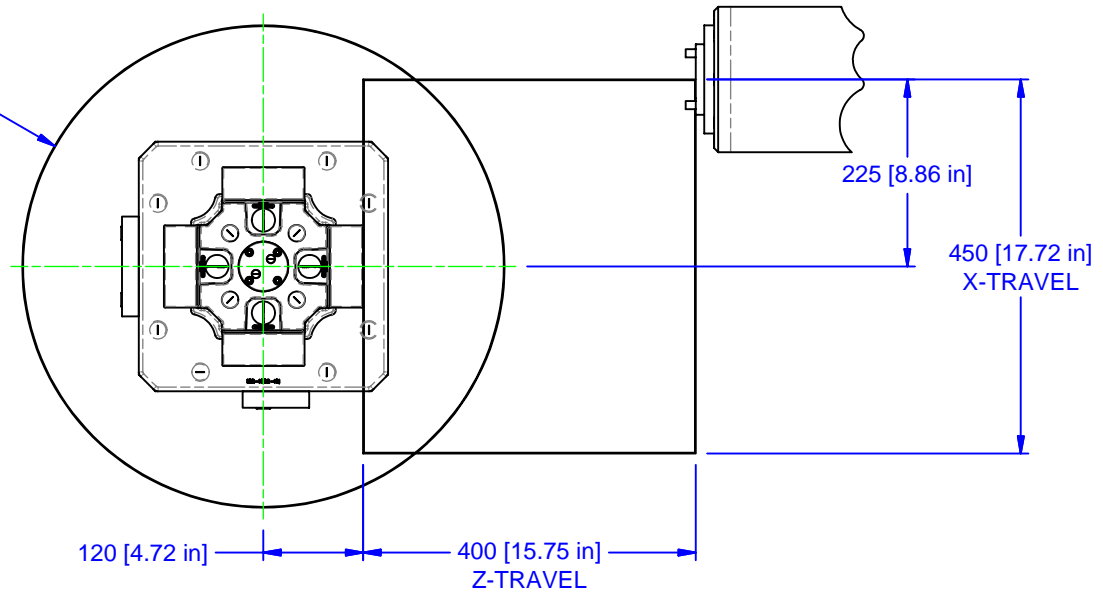
| | |
|---------------------------------|-------|
| UNSPECIFIED TOLERANCES: | |
| X | ±0.2 |
| X.X | ±0.1 |
| X.XX | ±0.05 |
| ANGLES | ±0.5° |
| ALL DIMENSIONS ARE MILLIMETERS. | |


 (800) 332-4425
 (724) 772-1644
www.ChickWorkholding.com

UNSPECIFIED EDGES: BREAK 0.3 TO 0.8
 UNSPECIFIED FILLETS: RADIUS 0.3 MAX

| | |
|--------------------------------------|----------------|
| ITEM: WORK PKG - HMC | |
| TYPE: MATSUURA ES-450H_I-CE | |
| FAM: 5ML1030-41 | |
| STYLE: 300 SQ BASE X 450 TALL | |
| TDD | 2 OF 4 |
| 8/13/2008 | 5HP-MATS-00205 |
| REV | A |

Ø580 [22.83 in]
MAXIMUM
WORKPIECE
SWING



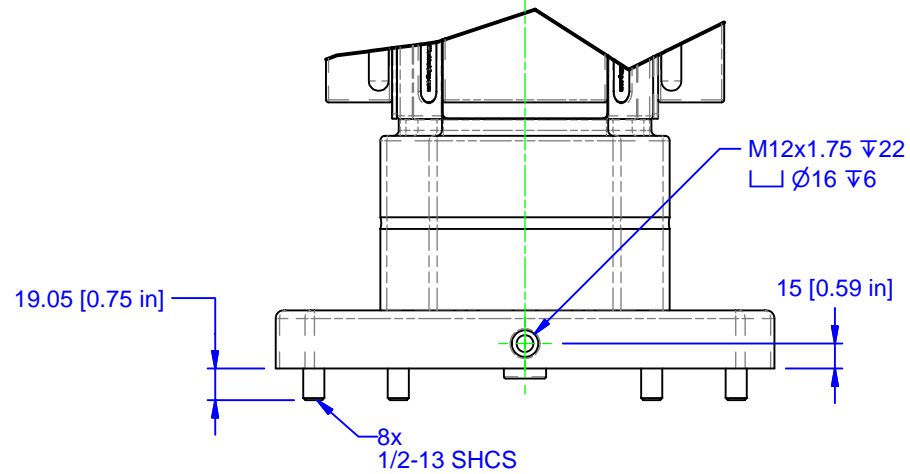
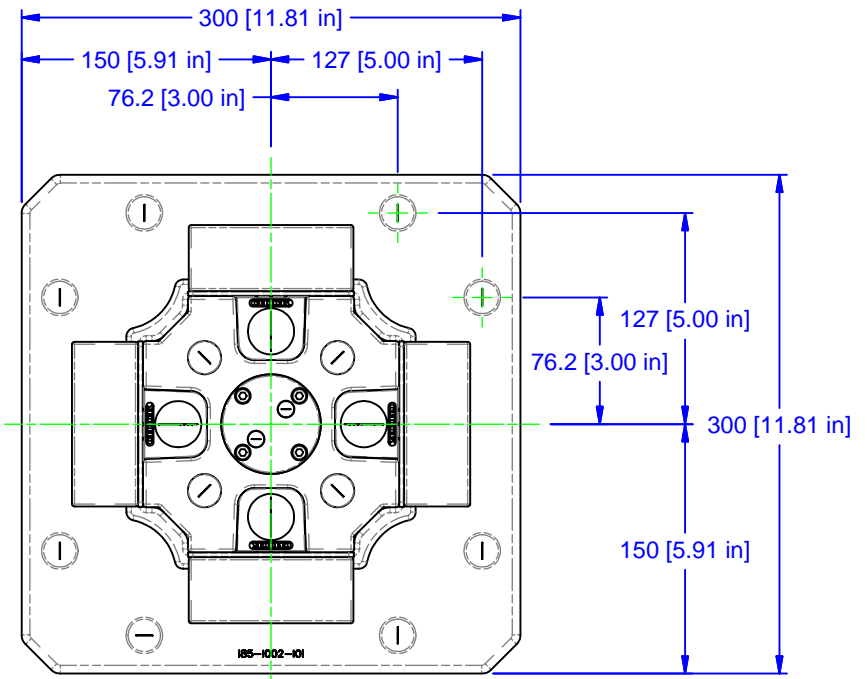
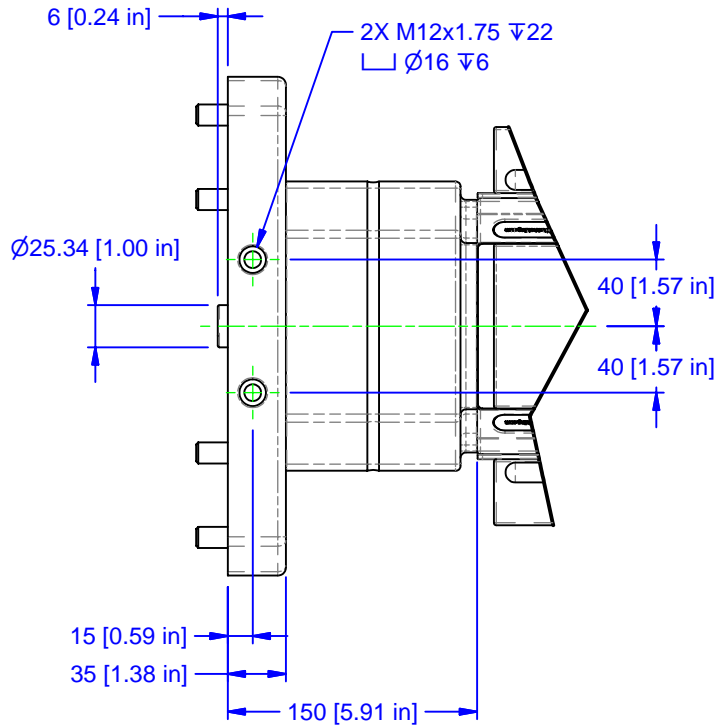
| |
|------------------------|
| MATERIAL: NA |
| HARDNESS: NA |
| COATING: NA |
| WEIGHT: 77670 g |
| COMMENTS: |

UNSPECIFIED TOLERANCES:
 X ±0.2
 X.X ±0.1
 X.XX ±0.05
 ANGLES ±0.5°
 ALL DIMENSIONS ARE MILLIMETERS.

CHICK (800) 332-4425
 (724) 772-1644
www.ChickWorkholding.com

| | | |
|--------------------------------------|--------|-----------------|
| ITEM: WORK PKG - HMC | | REV A |
| TYPE: MATSUURA ES-450H_I-CE | | |
| FAM: 5ML1030-41 | | SHP-MATS-00205 |
| STYLE: 300 SQ BASE X 450 TALL | | |
| TDD 8/13/2008 | 3 OF 4 | |

UNSPECIFIED EDGES: BREAK 0.3 TO 0.8
 UNSPECIFIED FILLETS: RADIUS 0.3 MAX



| | | | | | |
|-----------------|--|--|-------------------------------|--------|----------|
| MATERIAL: NA | UNSPECIFIED TOLERANCES: X \pm 0.2 X.X \pm 0.1 X.XX \pm 0.05 ANGLES \pm 0.5° ALL DIMENSIONS ARE MILLIMETERS. | (800) 332-4425 (724) 772-1644 www.ChickWorkholding.com | ITEM: WORK PKG - HMC | | REV A |
| HARDNESS: NA | | | TYPE: MATSUURA ES-450H_I-CE | | |
| COATING: NA | | | FAM: 5ML1030-41 | | |
| WEIGHT: 77670 g | | | STYLE: 300 SQ BASE X 450 TALL | | |
| COMMENTS: | | | TDD | 4 OF 4 | |
| | | 8/13/2008 | | | |