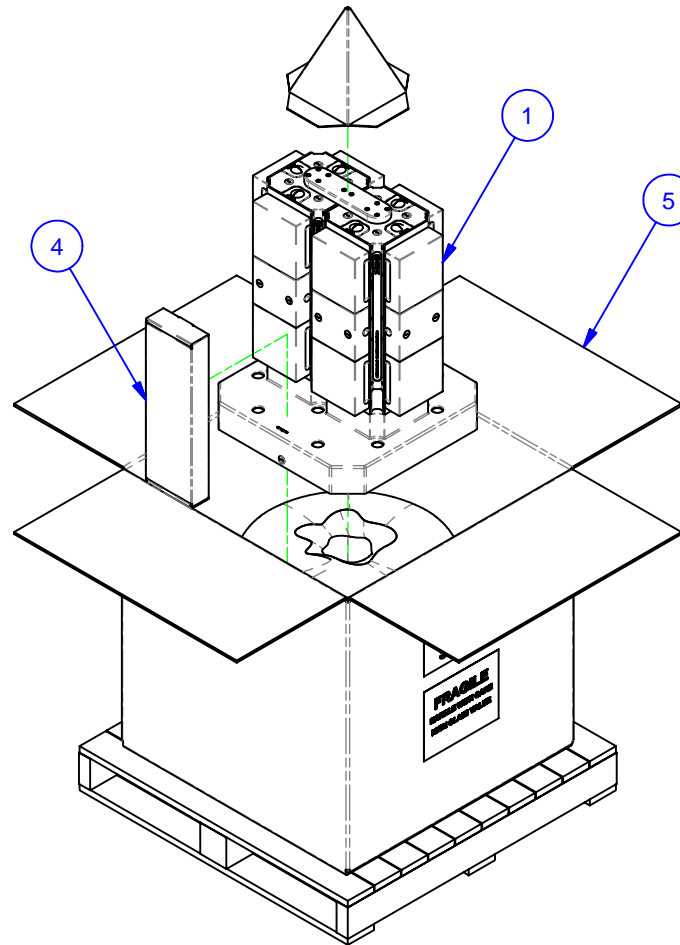

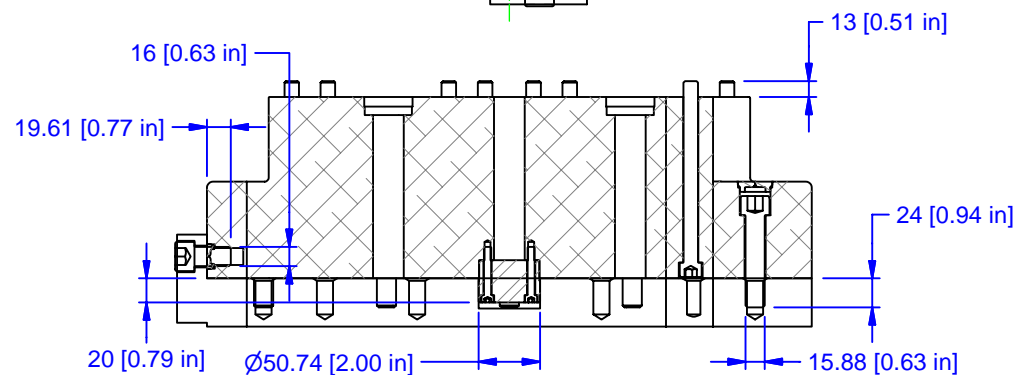
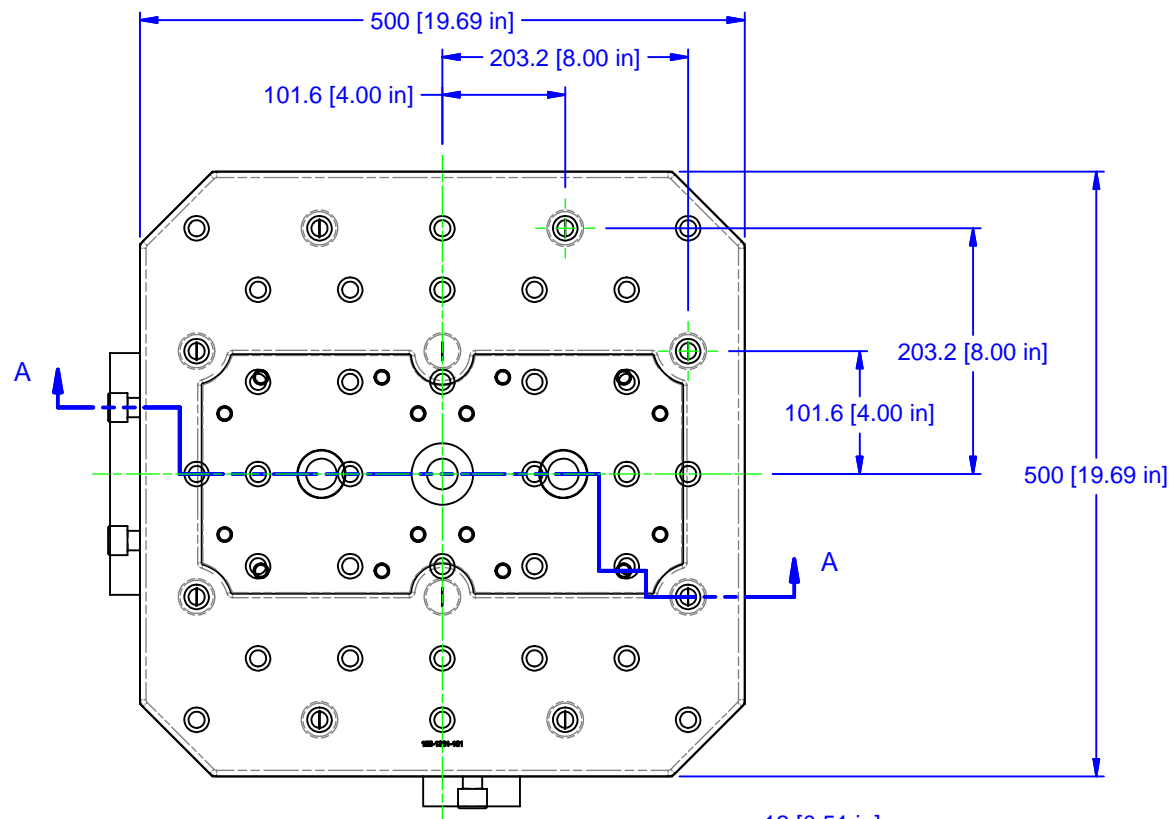


PARTS LIST						
No	QTY	PN	ITEM	TYPE	FAM	STYLE
1	1	188-1-10090	MULTI-LOK ASSEMBLY	MATSUURA H+405 (INCH)	5ML1550-41-12	500 SQ BASE X 650 TALL
2	1	058-2-10198	KIT	BASEPLATE INSTALLATION	5/8-11 TAPPED HOLE	(10) 5/8-11 X 3" SHCS & PLUGS
3	1	058-2-10197	KIT	BASEPLATE PILOT	5 & M	2" DIA
4	1	185-0-10002	KIT	TOOLS	5ML15-41	STANDARD
5	1	185-0-10006	PACKAGING	SHIPPING CONTAINER	HMC WORK PKG.	36x36x30 [M16 W/8" BOLTS]



MATERIAL: <a href="#">NA</a>	UNSPECIFIED TOLERANCES: X ±0.2 X.X ±0.1 X.XX ±0.05 ANGLES ±0.5°  ALL DIMENSIONS ARE MILLIMETERS.	 (800) 332-4425 (724) 772-1644 <a href="http://www.ChickWorkholding.com">www.ChickWorkholding.com</a>	ITEM: <a href="#">WORK PKG - HMC</a>				
HARDNESS: <a href="#">NA</a>			TYPE: <a href="#">MATSUURA H+405_I-CE</a>				
COATING: <a href="#">NA</a>			FAM: <a href="#">5ML1550-41-12</a>				
WEIGHT: <a href="#">261525 g</a>			STYLE: <a href="#">500 SQ BASE X 650 TALL</a>				
COMMENTS:		UNSPECIFIED EDGES: BREAK 0.3 TO 0.8 UNSPECIFIED FILLETS: RADIUS 0.3 MAX	TDD		1 OF 4	5HP-MATS-00208	REV A
			2/4/2009				



SECTION A-A

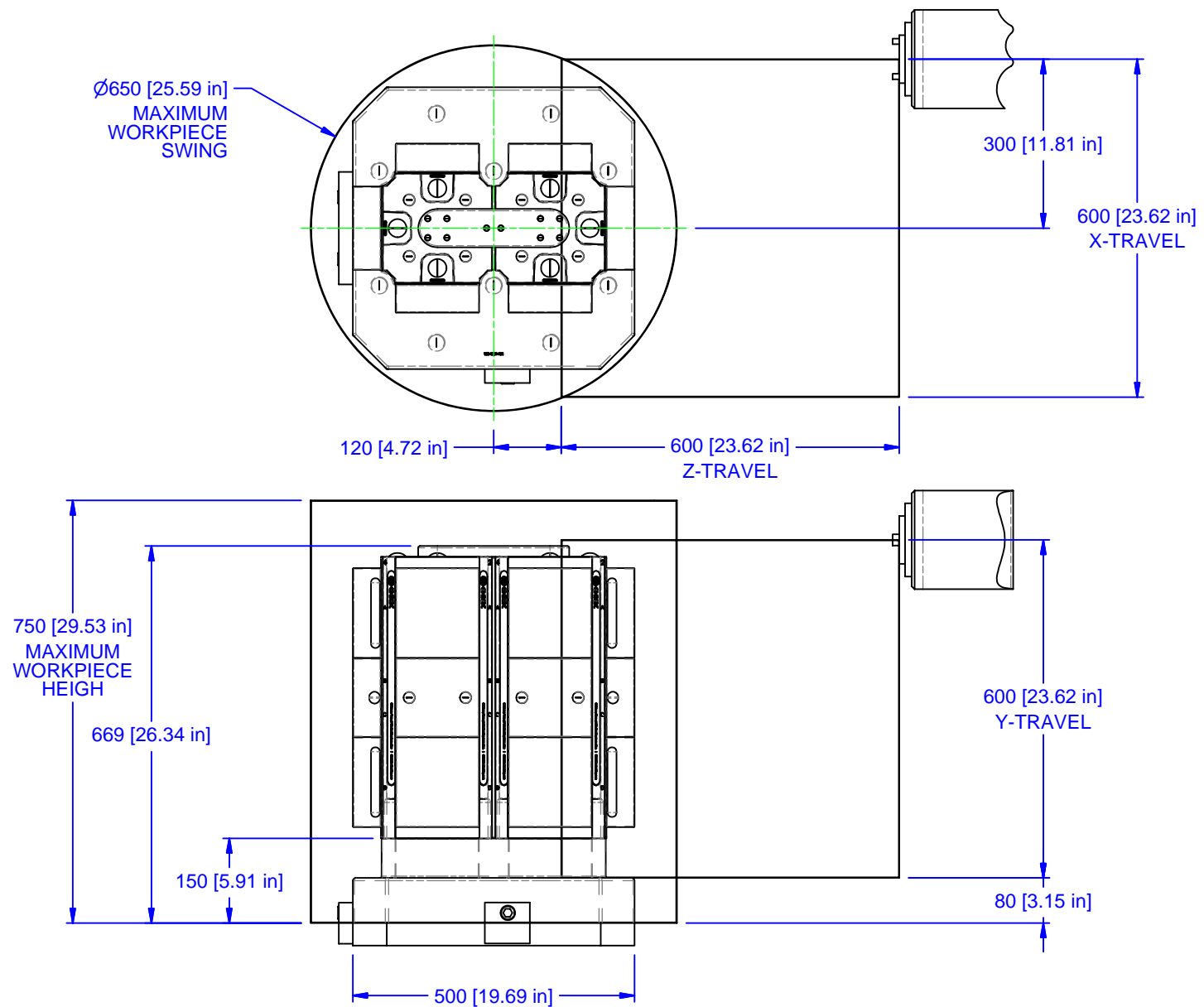
MATERIAL: <a href="#">NA</a>
HARDNESS: <a href="#">NA</a>
COATING: <a href="#">NA</a>
WEIGHT: <a href="#">261525 g</a>
COMMENTS:


UNSPECIFIED TOLERANCES:  
 X  $\pm 0.2$   
 X.X  $\pm 0.1$   
 X.XX  $\pm 0.05$   
 ANGLES  $\pm 0.5^\circ$   
 ALL DIMENSIONS ARE MILLIMETERS.

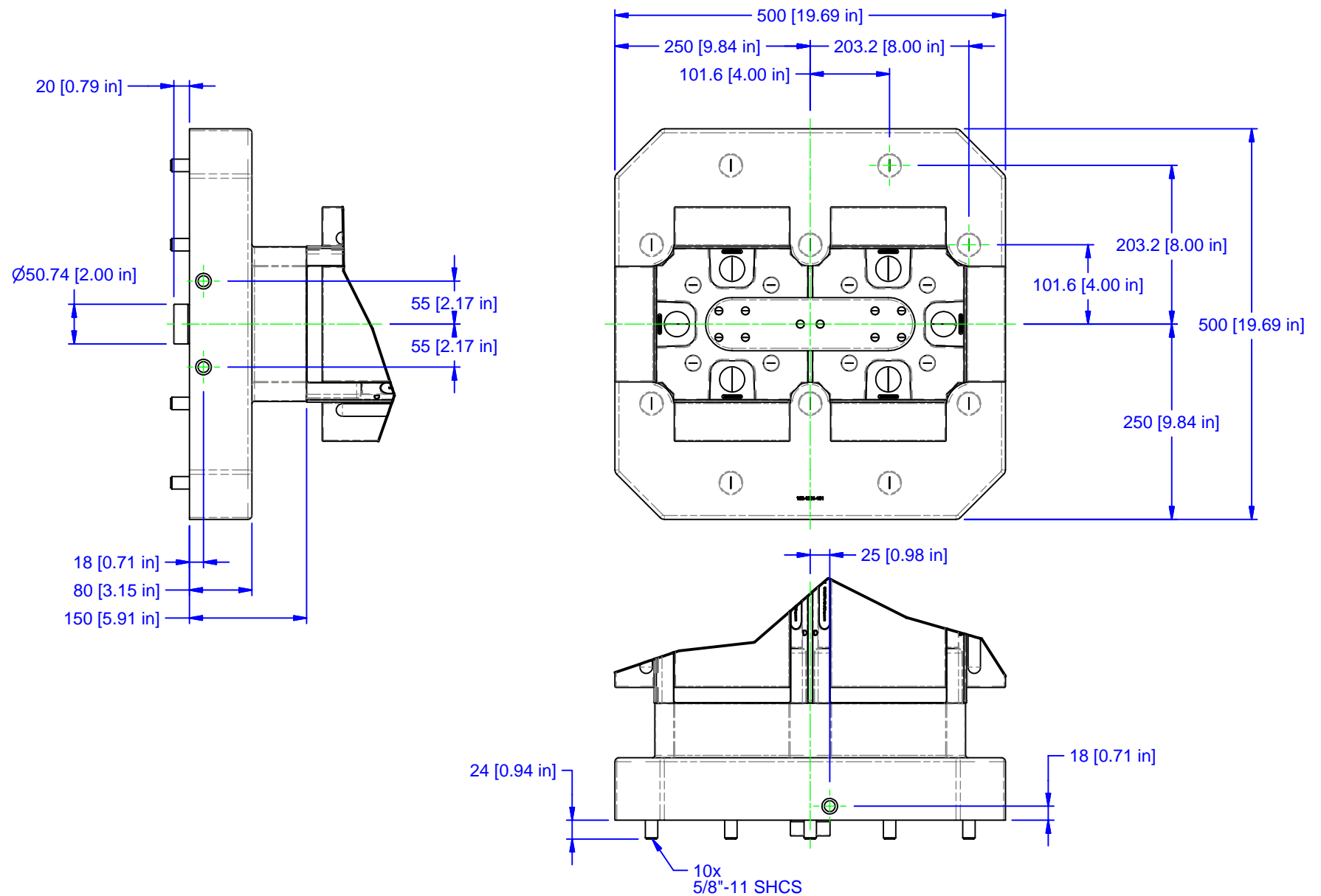
**CHICK** (800) 332-4425  
 (724) 772-1644  
[www.ChickWorkholding.com](http://www.ChickWorkholding.com)


UNSPECIFIED EDGES: BREAK 0.3 TO 0.8  
 UNSPECIFIED FILLETS: RADIUS 0.3 MAX

ITEM: <a href="#">WORK PKG - HMC</a>
TYPE: <a href="#">MATSUURA H+405_I-CE</a>
FAM: <a href="#">5ML1550-41-12</a>
STYLE: <a href="#">500 SQ BASE X 650 TALL</a>
TDD 2 OF 4
2/4/2009
5HP-MATS-00208
REV A



MATERIAL: <b>NA</b>	<b>UNSPECIFIED TOLERANCES:</b> X $\pm 0.2$ X.X $\pm 0.1$ X.XX $\pm 0.05$ ANGLES $\pm 0.5^\circ$ <b>ALL DIMENSIONS ARE MILLIMETERS.</b>	 (800) 332-4425 (724) 772-1644 <a href="http://www.ChickWorkholding.com">www.ChickWorkholding.com</a>	ITEM: <b>WORK PKG - HMC</b>			
HARDNESS: <b>NA</b>			TYPE: <b>MATSUURA H+405_I-CE</b>			
COATING: <b>NA</b>			FAM: <b>5ML1550-41-12</b>			
WEIGHT: <b>261525 g</b>			STYLE: <b>500 SQ BASE X 650 TALL</b>			
COMMENTS:			TDD	3 OF 4	5HP-MATS-00208	REV A



MATERIAL: <a href="#">NA</a>	UNSPECIFIED TOLERANCES: X ±0.2 X.X ±0.1 X.XX ±0.05 ANGLES ±0.5°  ALL DIMENSIONS ARE MILLIMETERS.	 (800) 332-4425 (724) 772-1644 <a href="http://www.ChickWorkholding.com">www.ChickWorkholding.com</a>	ITEM: <a href="#">WORK PKG - HMC</a>				
HARDNESS: <a href="#">NA</a>			TYPE: <a href="#">MATSUURA H+405_I-CE</a>				
COATING: <a href="#">NA</a>			FAM: <a href="#">5ML1550-41-12</a>				
WEIGHT: <a href="#">261525 g</a>			STYLE: <a href="#">500 SQ BASE X 650 TALL</a>				
COMMENTS:			UNSPECIFIED EDGES: BREAK 0.3 TO 0.8 UNSPECIFIED FILLETS: RADIUS 0.3 MAX				
			TDD	4	OF 4	5HP-MATS-00208	REV A
			2/4/2009				