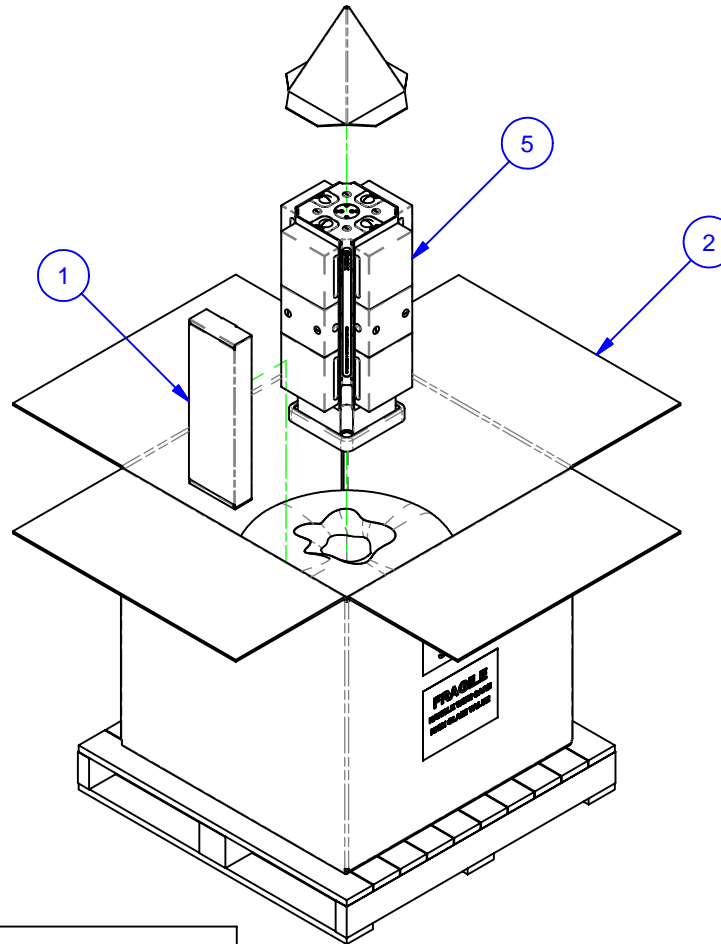


| PARTS LIST | | | | | | |
|------------|-----|-------------|--------------------|------------------------|-------------------|---------------------------|
| No | QTY | PN | ITEM | TYPE | FAM | STYLE |
| 1 | 1 | 185-0-10002 | KIT | TOOLS | 5ML15-41 | STANDARD |
| 2 | 1 | 185-0-10006 | PACKAGING | SHIPPING CONTAINER | HMC WORK PKG. | 36x36x30 [M16 W/8" BOLTS] |
| 3 | 1 | 185-2-10010 | KIT | PP TO PALLET - MOD BP | S5-41 | 208/250mm METRIC (M16) |
| 5 | 1 | 186-1-10485 | MULTI-LOK ASSEMBLY | 208mm MET PALLET PLATE | 5ML1550-41 | 75mm TALL RISER |
| 6 | 1 | 185-2-10028 | KIT | PILOT PLUG | MODULAR BASEPLATE | CUSTOM 50mm, 50mm LONG |



REVISION HISTORY

| SHEET | REV | DESCRIPTION | DATE | REV BY |
|-------|-----|---|----------|--------|
| 3 | B | CORRECTED NOSE-TO-CENTER DIMENSION FROM 120 TO 70 | 7/1/2009 | TDD |

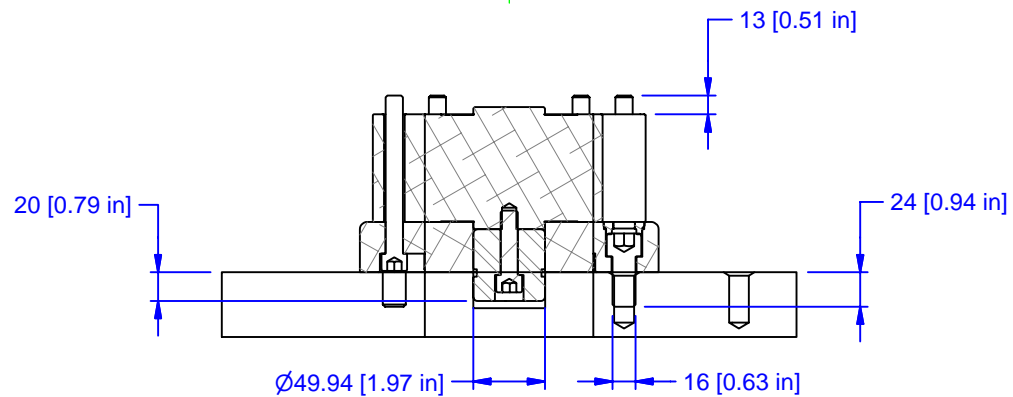
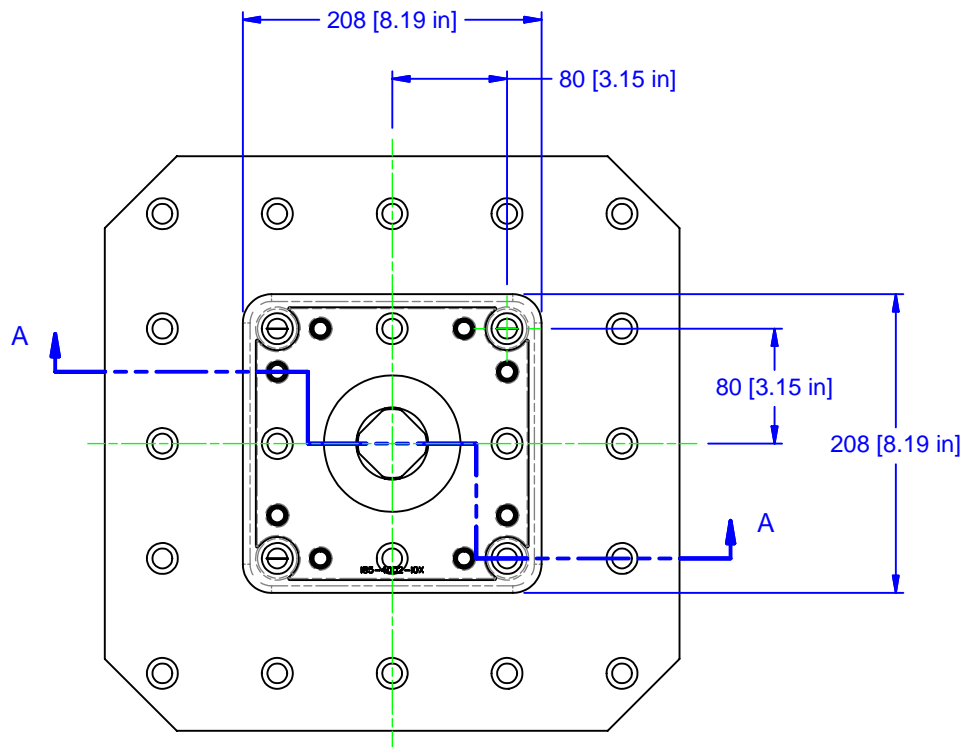
| | |
|-----------|----------|
| MATERIAL: | NA |
| HARDNESS: | NA |
| COATING: | NA |
| WEIGHT: | 134853 g |
| COMMENTS: | |

UNSPECIFIED TOLERANCES:
 X ±0.2
 X.X ±0.1
 X.XX ±0.05
 ANGLES ±0.5°
 ALL DIMENSIONS ARE MILLIMETERS.

CHICK (800) 332-4425
 (724) 772-1644
www.ChickWorkholding.com

UNSPECIFIED EDGES: BREAK 0.3 TO 0.8
 UNSPECIFIED FILLETS: RADIUS 0.3 MAX

| | | | |
|-----------|-------------------------------|----------------|-------|
| ITEM: | WORK PKG - HMC | | |
| TYPE: | MATSUURA H+300_M (400 PALLET) | | |
| FAM: | 5ML1550-41 | | |
| STYLE: | 208 SQ BASE x 610 TALL | | |
| TDD | 1 OF 4 | 5HP-MATS-00209 | REV B |
| 6/29/2009 | | | |



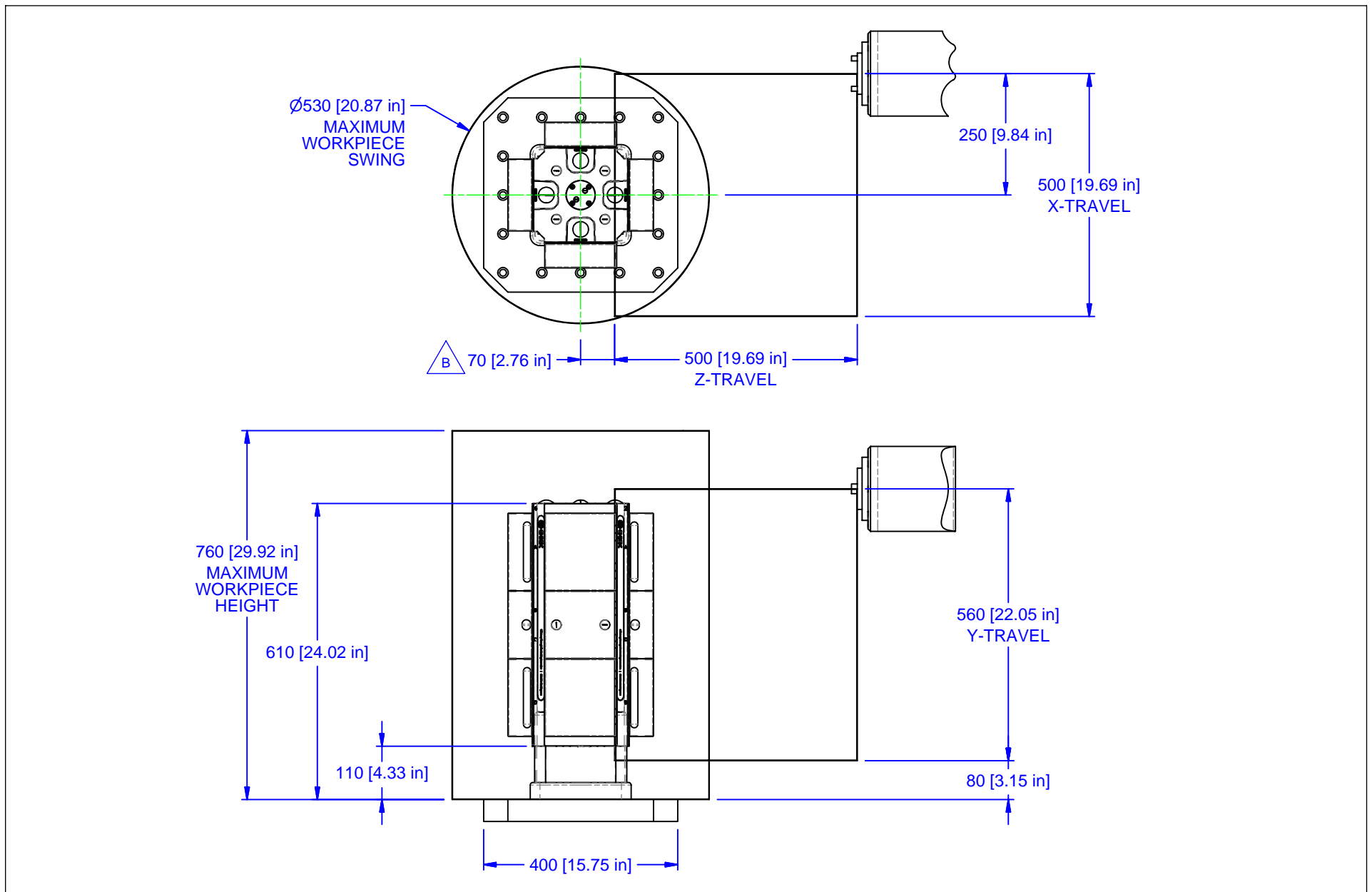
SECTION A-A

| |
|-------------------------|
| MATERIAL: NA |
| HARDNESS: NA |
| COATING: NA |
| WEIGHT: 134853 g |
| COMMENTS: |

UNSPECIFIED TOLERANCES:
 X ±0.2
 X.X ±0.1
 X.XX ±0.05
 ANGLES ±0.5°
 ALL DIMENSIONS ARE MILLIMETERS.

CHICK (800) 332-4425
 (724) 772-1644
www.ChickWorkholding.com
 UNSPECIFIED EDGES: BREAK 0.3 TO 0.8
 UNSPECIFIED FILLETS: RADIUS 0.3 MAX

| | | |
|--|--------|-----------------|
| ITEM: WORK PKG - HMC | | REV B |
| TYPE: MATSUURA H+300_M (400 PALLET) | | |
| FAM: 5ML1550-41 | | SHP-MATS-00209 |
| STYLE: 208 SQ BASE x 610 TALL | | |
| TDD | 2 OF 4 | |
| 6/29/2009 | | |

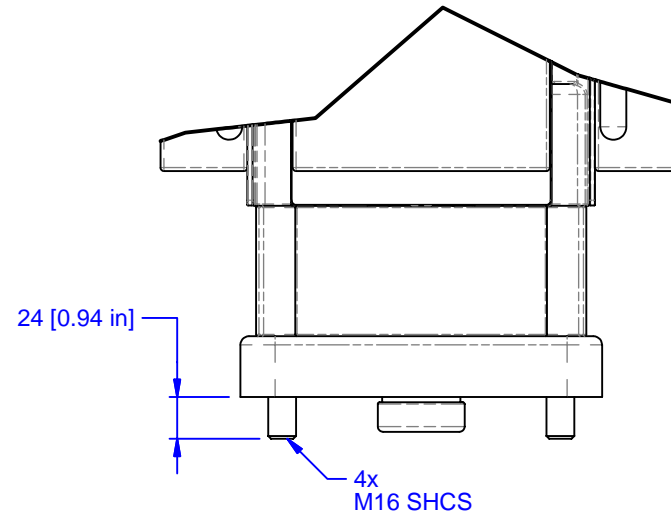
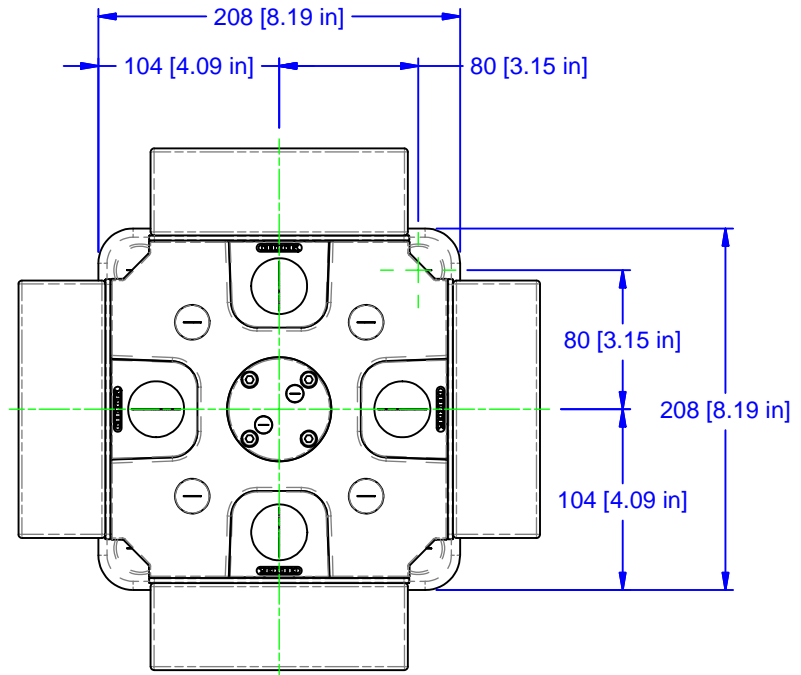
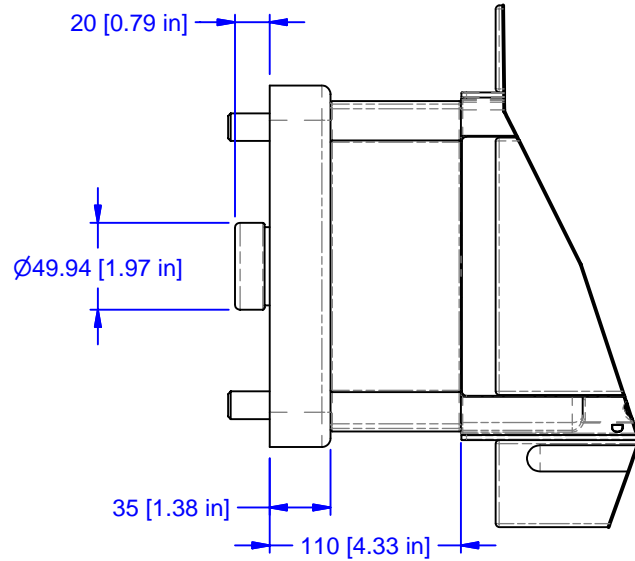


| | |
|-----------|----------|
| MATERIAL: | NA |
| HARDNESS: | NA |
| COATING: | NA |
| WEIGHT: | 134853 g |
| COMMENTS: | |

UNSPECIFIED TOLERANCES:
 X ±0.2
 X.X ±0.1
 X.XX ±0.05
 ANGLES ±0.5°
 ALL DIMENSIONS ARE MILLIMETERS.

CHICK (800) 332-4425
 (724) 772-1644
www.ChickWorkholding.com
 UNSPECIFIED EDGES: BREAK 0.3 TO 0.8
 UNSPECIFIED FILLETS: RADIUS 0.3 MAX

| | | | |
|-------------------------------------|--------|----------------|-------|
| ITEM: WORK PKG - HMC | | | |
| TYPE: MATSUURA H+300_M (400 PALLET) | | | |
| FAM: 5ML1550-41 | | | |
| STYLE: 208 SQ BASE x 610 TALL | | | |
| TDD | 3 OF 4 | 5HP-MATS-00209 | REV B |
| 6/29/2009 | | | |



| | |
|-----------|----------|
| MATERIAL: | NA |
| HARDNESS: | NA |
| COATING: | NA |
| WEIGHT: | 134853 g |
| COMMENTS: | |

UNSPECIFIED TOLERANCES:
 X ±0.2
 X.X ±0.1
 X.XX ±0.05
 ANGLES ±0.5°
 ALL DIMENSIONS ARE MILLIMETERS.

CHICK (800) 332-4425
 (724) 772-1644
www.ChickWorkholding.com
 UNSPECIFIED EDGES: BREAK 0.3 TO 0.8
 UNSPECIFIED FILLETS: RADIUS 0.3 MAX

| | | |
|-------------------------------------|--------|----------------|
| ITEM: WORK PKG - HMC | | REV |
| TYPE: MATSUURA H+300_M (400 PALLET) | | |
| FAM: 5ML1550-41 | | B |
| STYLE: 208 SQ BASE x 610 TALL | | |
| TDD | 4 OF 4 | SHP-MATS-00209 |
| 6/29/2009 | | |