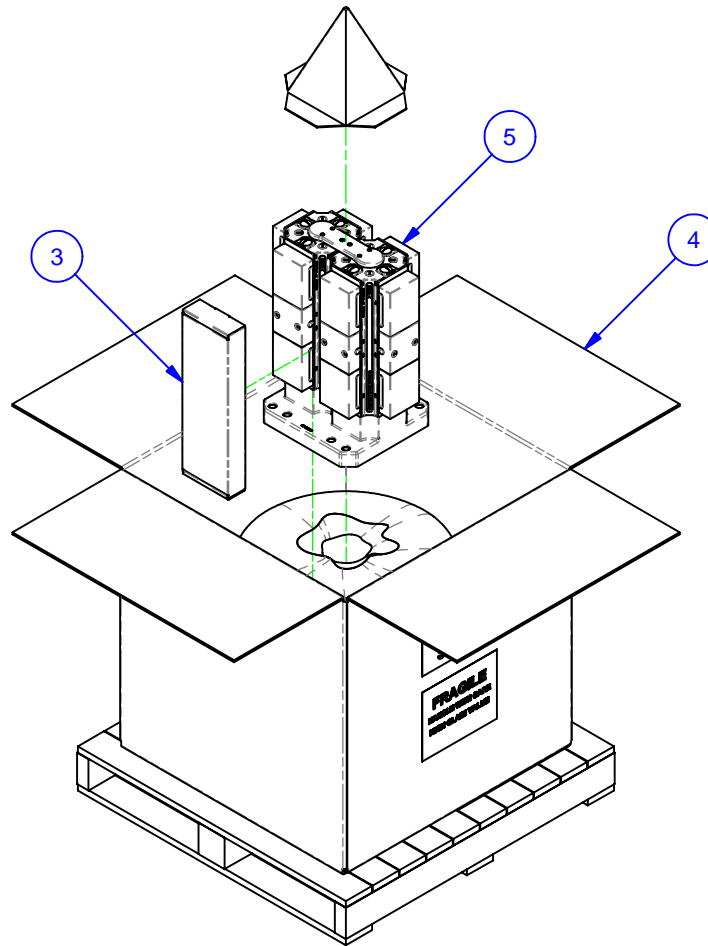

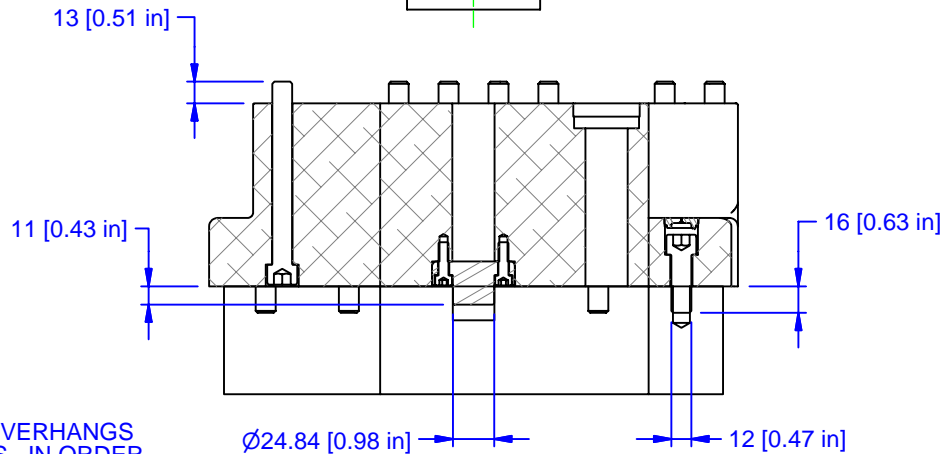
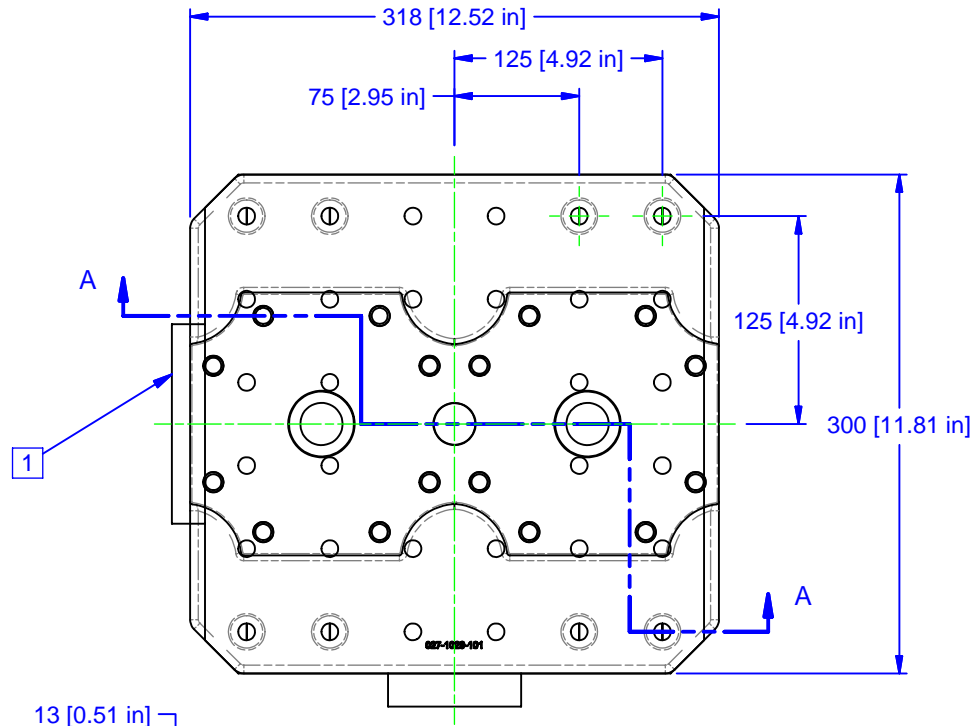


PARTS LIST						
No	QTY	PN	ITEM	TYPE	FAM	STYLE
1	1	058-2-10073	KIT	BASEPLATE MOUNTING	M12 TAPPED HOLE	(8) M12 X 35 SHCS
2	1	058-2-10090	KIT	BASEPLATE	PILOT PLUG	25mm
3	1	185-0-10003	KIT	TOOLS	5ML10-41	STANDARD
4	1	185-0-10005	PACKAGING	SHIPPING CONTAINER	HMC WORK PKG.	36x36x30 [M12 W/8" BOLTS]
5	1	188-1-10095	MULTI-LOK ASSEMBLY	MATSUURA H+300_M	5ML1040-41-12	318 X 300 BASE X 510 TALL



MATERIAL: NA	UNSPECIFIED TOLERANCES: X ±0.2 X.X ±0.1 X.XX ±0.05 ANGLES ±0.5° ALL DIMENSIONS ARE MILLIMETERS.	 (800) 332-4425 (724) 772-1644 www.ChickWorkholding.com	ITEM: WORK PKG - HMC		REV	
HARDNESS: NA			TYPE: MATSUURA H+300_M-CE			A
COATING: NA			FAM: 5ML1040-41-12		TDD	
WEIGHT: 120390 g			STYLE: 318 X 300 BASE X 510 TALL			5HP-MATS-00223
COMMENTS:			12/1/2009			

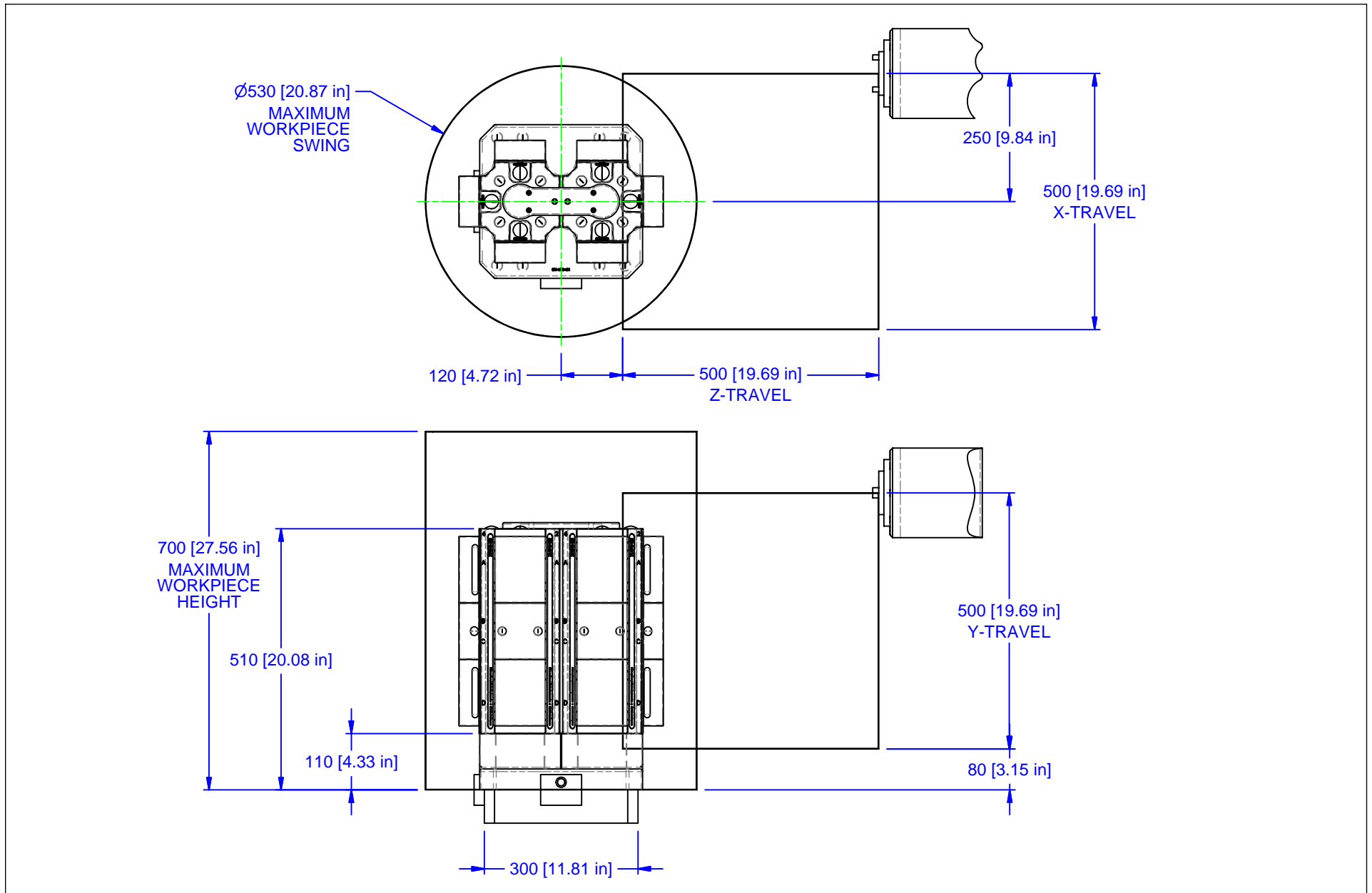



SECTION A-A

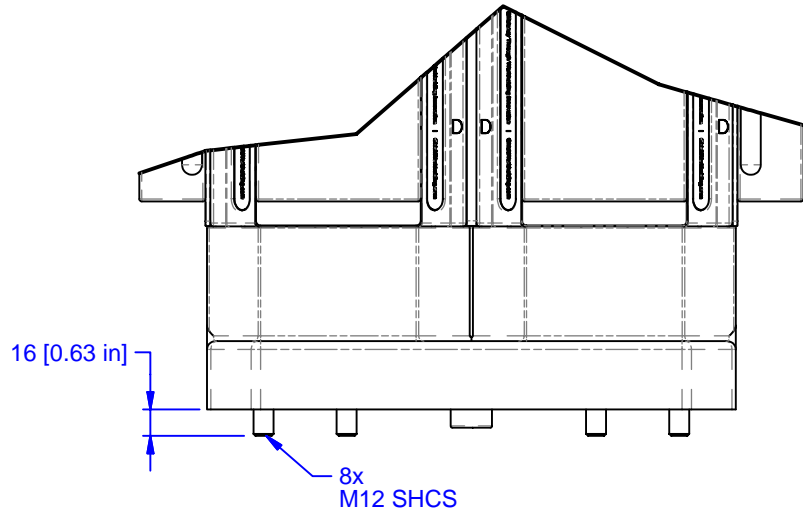
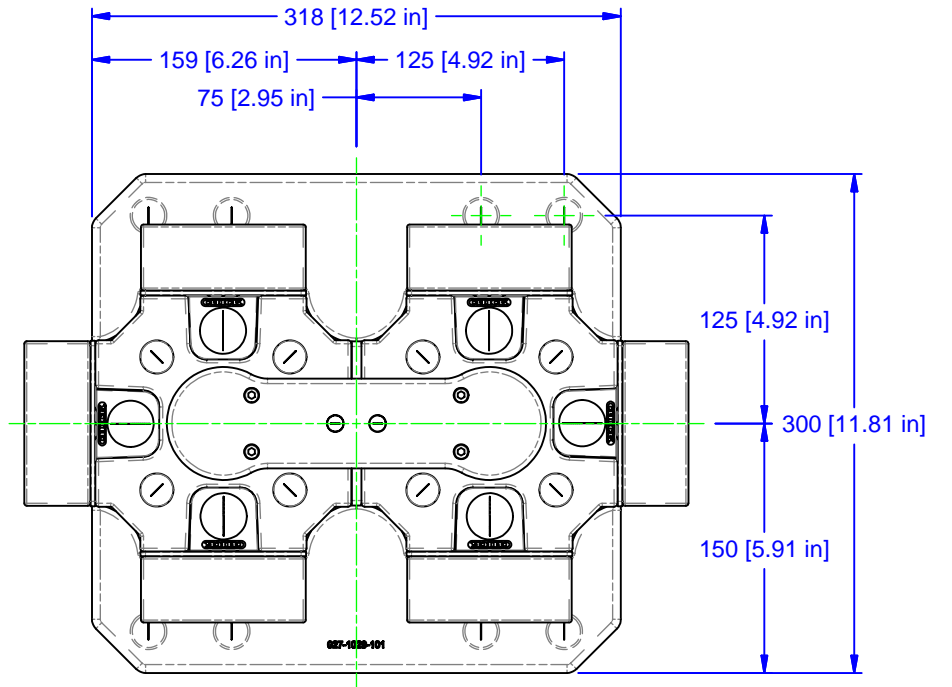
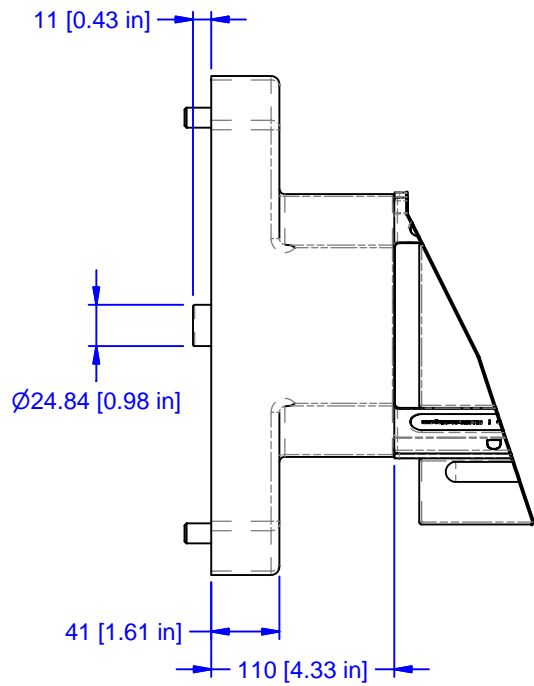
NOTE:


1 THE BASEPLATE IN THIS PACKAGE OVERHANGS THE PALLET BY 9mm ON TWO SIDES. IN ORDER TO MOUNT THE BASEPLATE, THE EDGE LOCATING PLATE ON THE LEFT SIDE MUST FIRST BE REMOVED.

MATERIAL: NA	UNSPECIFIED TOLERANCES: X ±0.2 X.X ±0.1 X.XX ±0.05 ANGLES ±0.5° ALL DIMENSIONS ARE MILLIMETERS.	(800) 332-4425 (724) 772-1644 www.ChickWorkholding.com	ITEM: WORK PKG - HMC								
HARDNESS: NA			TYPE: MATSUURA H+300_M-CE								
COATING: NA			FAM: 5ML1040-41-12								
WEIGHT: 120390 g			STYLE: 318 X 300 BASE X 510 TALL								
COMMENTS:			<table border="1"> <tr> <td>TDD</td> <td>2 OF 4</td> <td>5HP-MATS-00223</td> <td>REV A</td> </tr> <tr> <td colspan="2">12/1/2009</td> <td></td> <td></td> </tr> </table>	TDD	2 OF 4	5HP-MATS-00223	REV A	12/1/2009			
TDD	2 OF 4	5HP-MATS-00223	REV A								
12/1/2009											



MATERIAL: NA	UNSPECIFIED TOLERANCES: X ±0.2 X.X ±0.1 X.XX ±0.05 ANGLES ±0.5° ALL DIMENSIONS ARE MILLIMETERS.	 CHICK (800) 332-4425 (724) 772-1644 www.ChickWorkholding.com	ITEM: WORK PKG - HMC		
HARDNESS: NA			TYPE: MATSUURA H+300_M-CE		
COATING: NA			FAM: 5ML1040-41-12		
WEIGHT: 120390 g			STYLE: 318 X 300 BASE X 510 TALL		
COMMENTS:			TDD	3 OF 4	5HP-MATS-00223



MATERIAL: NA	UNSPECIFIED TOLERANCES: X ±0.2 X.X ±0.1 X.XX ±0.05 ANGLES ±0.5° ALL DIMENSIONS ARE MILLIMETERS.	 (800) 332-4425 (724) 772-1644 www.ChickWorkholding.com	ITEM: WORK PKG - HMC		TDD 4 OF 4 12/1/2009 5HP-MATS-00223 REV A
HARDNESS: NA			TYPE: MATSUURA H+300_M-CE		
COATING: NA			FAM: 5ML1040-41-12		
WEIGHT: 120390 g			STYLE: 318 X 300 BASE X 510 TALL		
COMMENTS:			UNSPECIFIED EDGES: BREAK 0.3 TO 0.8 UNSPECIFIED FILLETS: RADIUS 0.3 MAX		