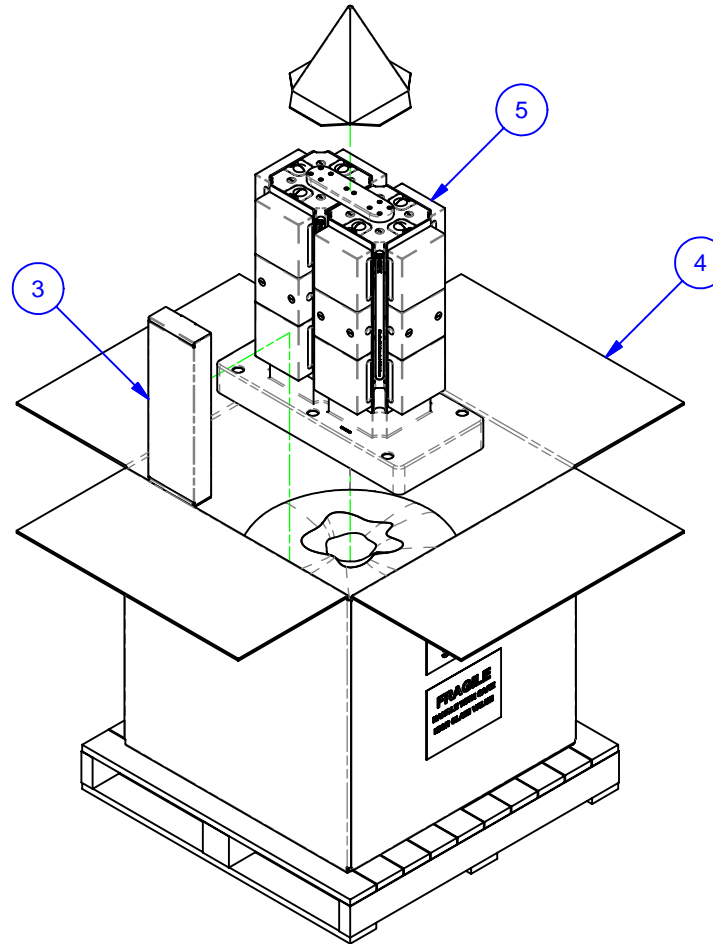

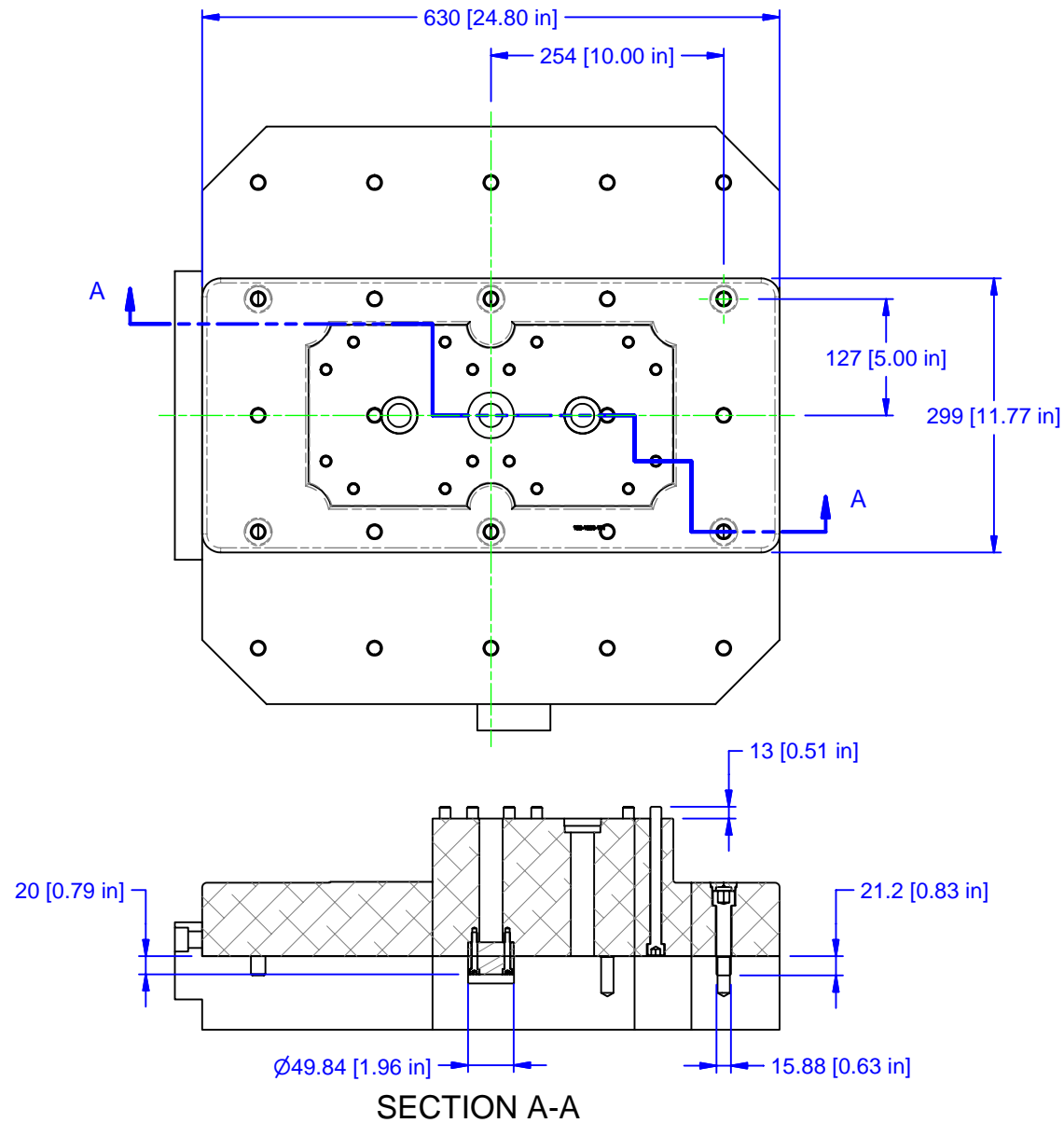


PARTS LIST						
No	QTY	PN	ITEM	TYPE	FAM	STYLE
1	1	058-2-10019	KIT	BASEPLATE PILOT	5 & M	STANDARD 50mm
2	1	058-2-10147	KIT	BASEPLATE MOUNTING	5 & M	5/8-11 X 3.00 (6 BOLTS)
3	1	185-0-10002	KIT	TOOLS	5ML15-41	STANDARD
4	1	185-0-10008	PACKAGING	SHIPPING CONTAINER	HMC WORK PKG.	36x36x30 [M16 W/10" BOLTS]
5	1	188-1-10097	MULTI-LOK ASSEMBLY	MATSUURA H+630_I	5ML1550-41-12	630 X 299 X 650 TALL



MATERIAL: NA	UNSPECIFIED TOLERANCES: X ±0.2 X.X ±0.1 X.XX ±0.05 ANGLES ±0.5° ALL DIMENSIONS ARE MILLIMETERS.	 (800) 332-4425 (724) 772-1644 www.ChickWorkholding.com	ITEM: WORK PKG - HMC
HARDNESS: NA			TYPE: MATSUURA H+630_I
COATING: NA			FAM: 5ML1550-41-12
WEIGHT: 249112 g			STYLE: 630 X 299 BASE X 650 TALL
COMMENTS:			TDD 1 OF 4



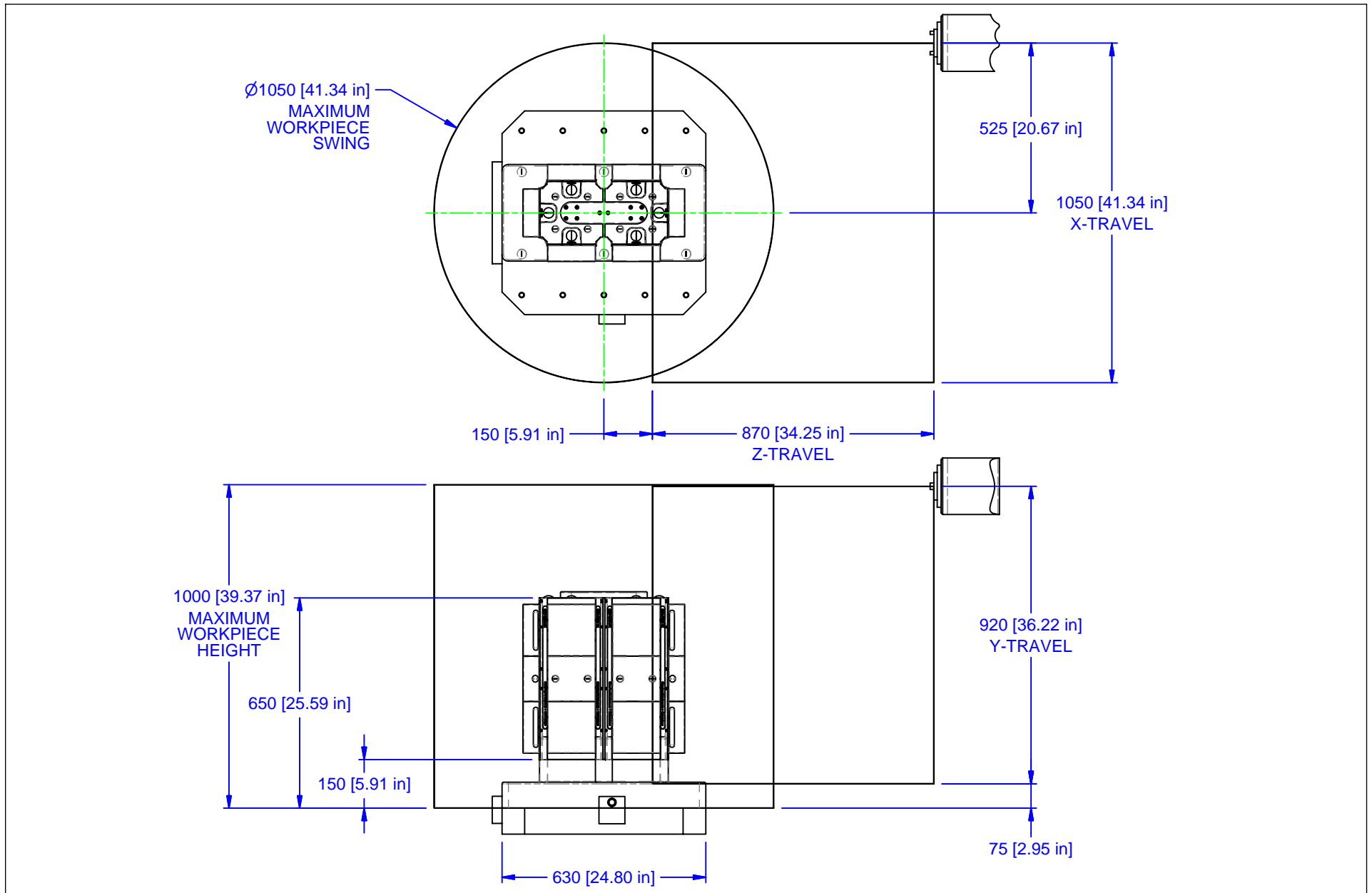
SECTION A-A


MATERIAL: NA
HARDNESS: NA
COATING: NA
WEIGHT: 249112 g
COMMENTS:

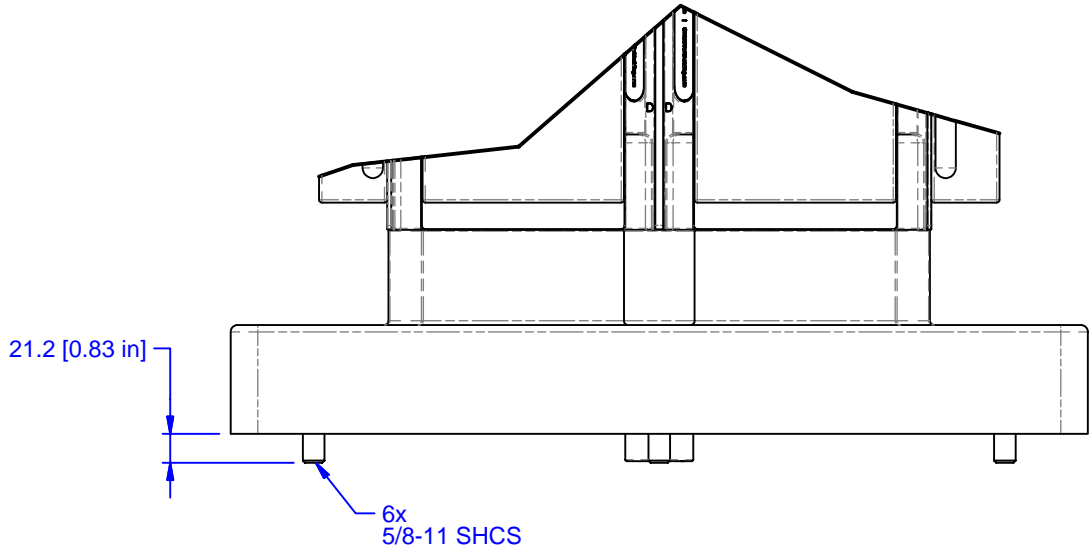
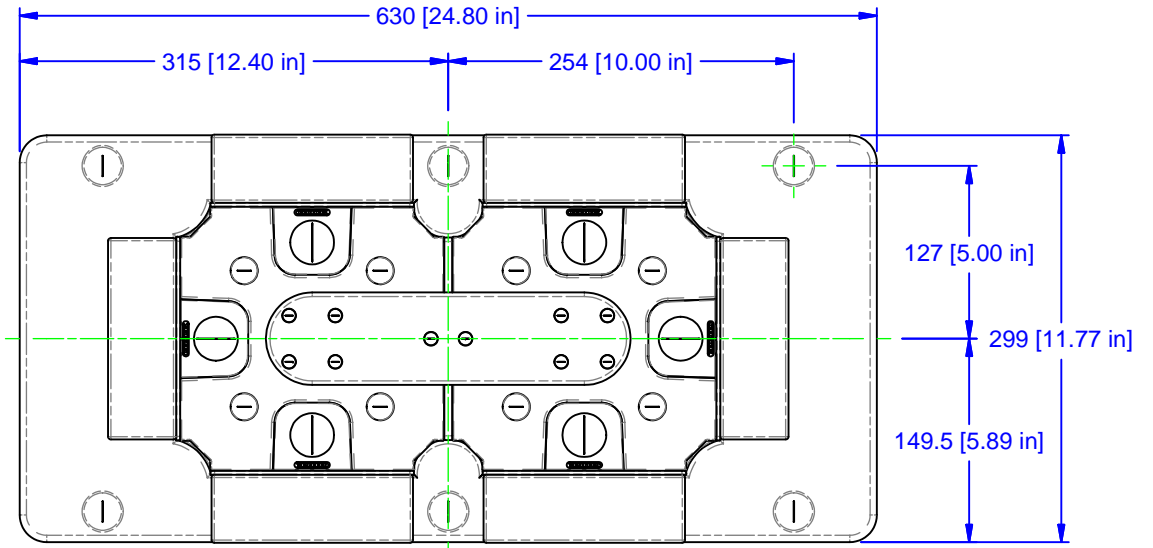
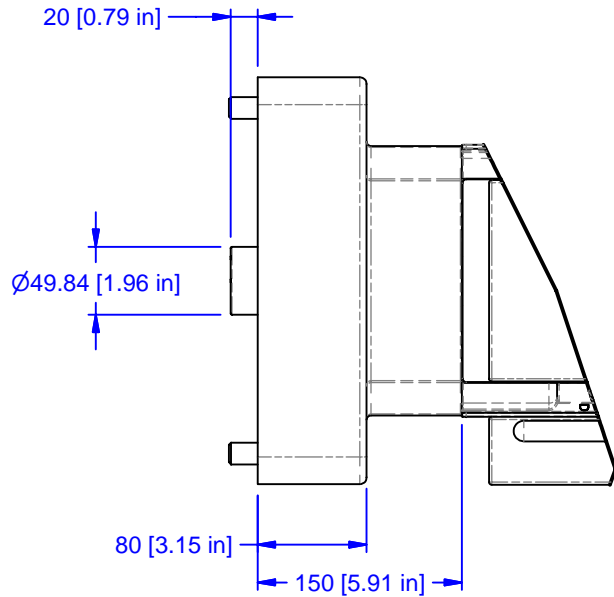
UNSPECIFIED TOLERANCES:	
X	±0.2
X.X	±0.1
X.XX	±0.05
ANGLES	±0.5°
ALL DIMENSIONS ARE MILLIMETERS.	


 (800) 332-4425
 (724) 772-1644
www.ChickWorkholding.com
 UNSPECIFIED EDGES: BREAK 0.3 TO 0.8
 UNSPECIFIED FILLETS: RADIUS 0.3 MAX

ITEM: WORK PKG - HMC			
TYPE: MATSUURA H+630_I			
FAM: 5ML1550-41-12			
STYLE: 630 X 299 BASE X 650 TALL			
TDD	2 OF 4	5HP-MATS-00225	REV
1/4/2010			A



MATERIAL: NA	UNSPECIFIED TOLERANCES: X ±0.2 X.X ±0.1 X.XX ±0.05 ANGLES ±0.5° ALL DIMENSIONS ARE MILLIMETERS.	 (800) 332-4425 (724) 772-1644 www.ChickWorkholding.com	ITEM: WORK PKG - HMC		
HARDNESS: NA			TYPE: MATSUURA H+630_I		
COATING: NA			FAM: 5ML1550-41-12		
WEIGHT: 249112 g			STYLE: 630 X 299 BASE X 650 TALL		
COMMENTS:			TDD	3 OF 4	5HP-MATS-00225
	1/4/2010				



MATERIAL:	NA
HARDNESS:	NA
COATING:	NA
WEIGHT:	249112 g
COMMENTS:	

UNSPECIFIED TOLERANCES:

X	±0.2
X.X	±0.1
X.XX	±0.05
ANGLES	±0.5°

ALL DIMENSIONS ARE MILLIMETERS.

CHICK (800) 332-4425
 (724) 772-1644
www.ChickWorkholding.com

UNSPECIFIED EDGES: BREAK 0.3 TO 0.8
 UNSPECIFIED FILLETS: RADIUS 0.3 MAX

ITEM: WORK PKG - HMC			
TYPE: MATSUURA H+630_I			
FAM: 5ML1550-41-12			
STYLE: 630 X 299 BASE X 650 TALL			
TDD	4 OF 4	5HP-MATS-00225	REV A
1/4/2010			