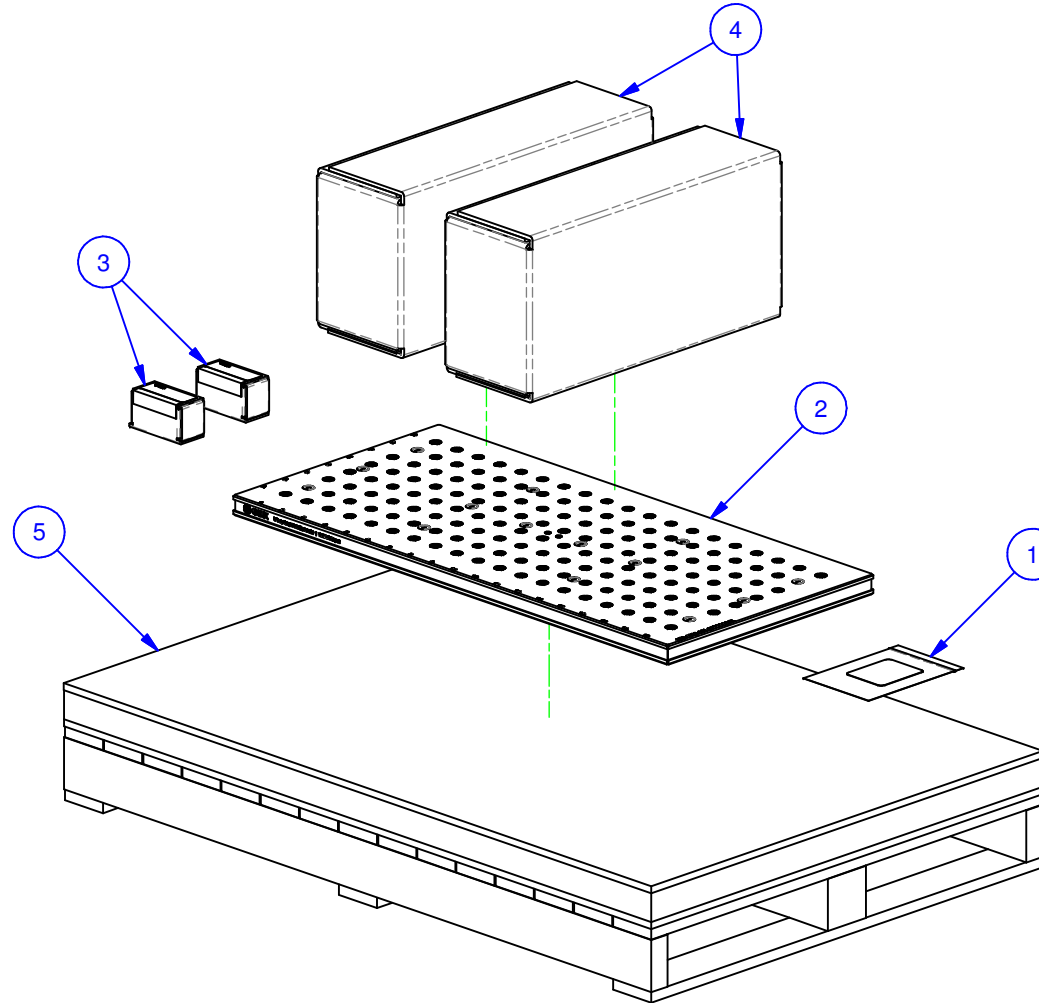


PARTS LIST						
No	QTY	PN	ITEM	TYPE	FAM	STYLE
1	1	050-2-10056	KIT	FOUNDATION MOUNTING	1/2-13 TAPPED HOLE	(14) 1/2-13 X 1.5" SHCS
2	1	055-1013-01	FOUNDATION ASSY	WP STANDARD	HAAS VF-3 APC	1016 X 482
3	2	058-9-10001	MPIN12S	ROUND & DIAMOND PIN SET	SYSTEM 5 & M SYSTEM	12mm DIA. x 19mm LONG
4	2	156-9-10001	5QL1540-AL	ALUMINUM QWIK-LOK	5-1540	SHIPPING GROUP
5	1	990-50-022	PACKAGING	SHIPPING CRATE	FOUNDATIONS	54" X 36"

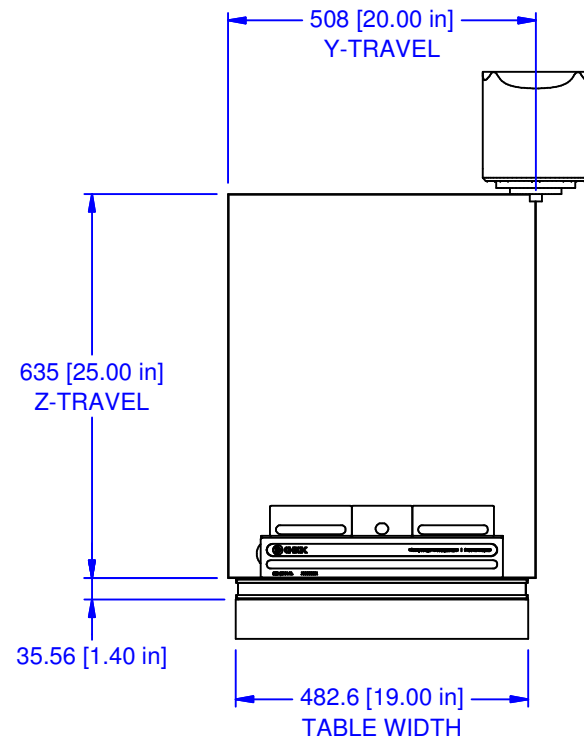
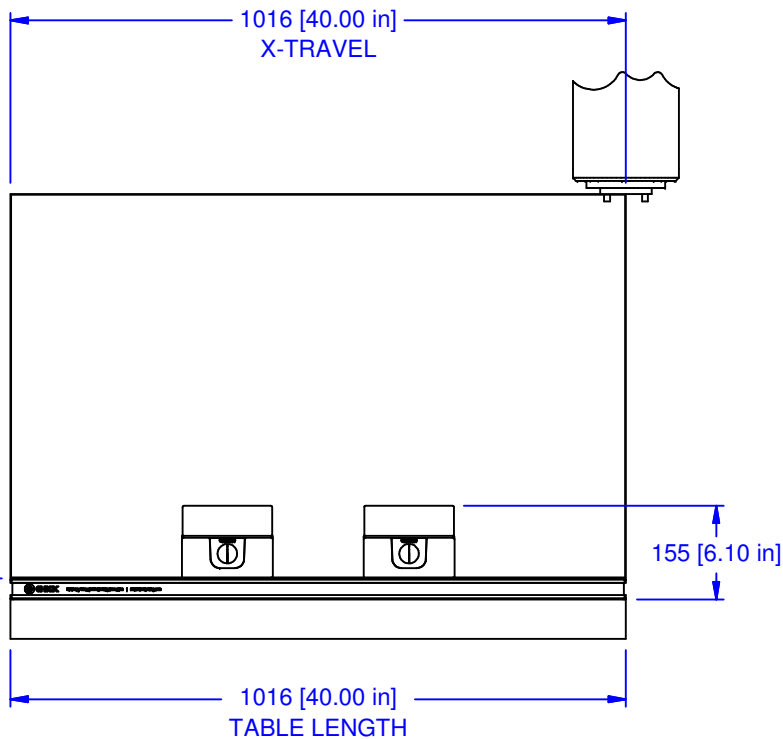
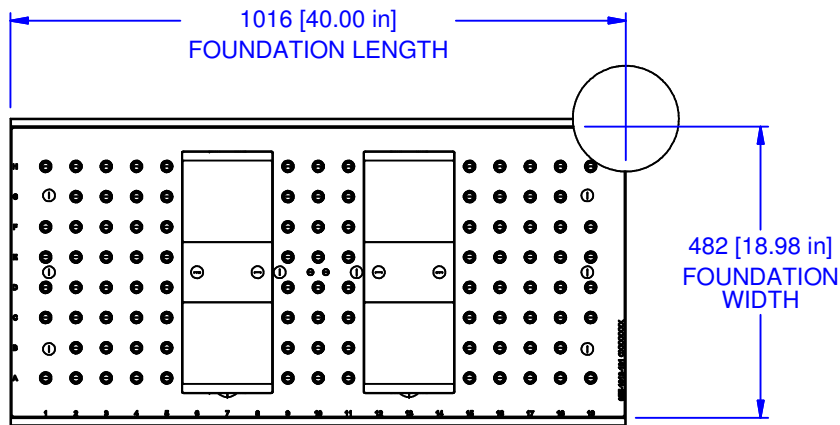


MATERIAL: NA
HARDNESS: NA
COATING: NA
WEIGHT: 213110 g
COMMENTS: UP TO (6) 5QL1540-AL MAY BE USED

UNSPECIFIED TOLERANCES:
 X ±0.2
 X.X ±0.1
 X.XX ±0.05
 ANGLES ±0.5°
 ALL DIMENSIONS ARE MILLIMETERS.

CHICK (800) 332-4425
 (724) 772-1644
www.ChickWorkholding.com
 UNSPECIFIED EDGES: BREAK 0.3 TO 0.8
 UNSPECIFIED FILLETS: RADIUS 0.3 MAX

ITEM: WORK PKG - VMC		REV A
TYPE: HAAS VF-3 APC_I		
FAM: 5QL1540-AL		5VP-HAAS-00122
STYLE: 1016 X 482		
TDD	1 OF 3	
7/25/2011		



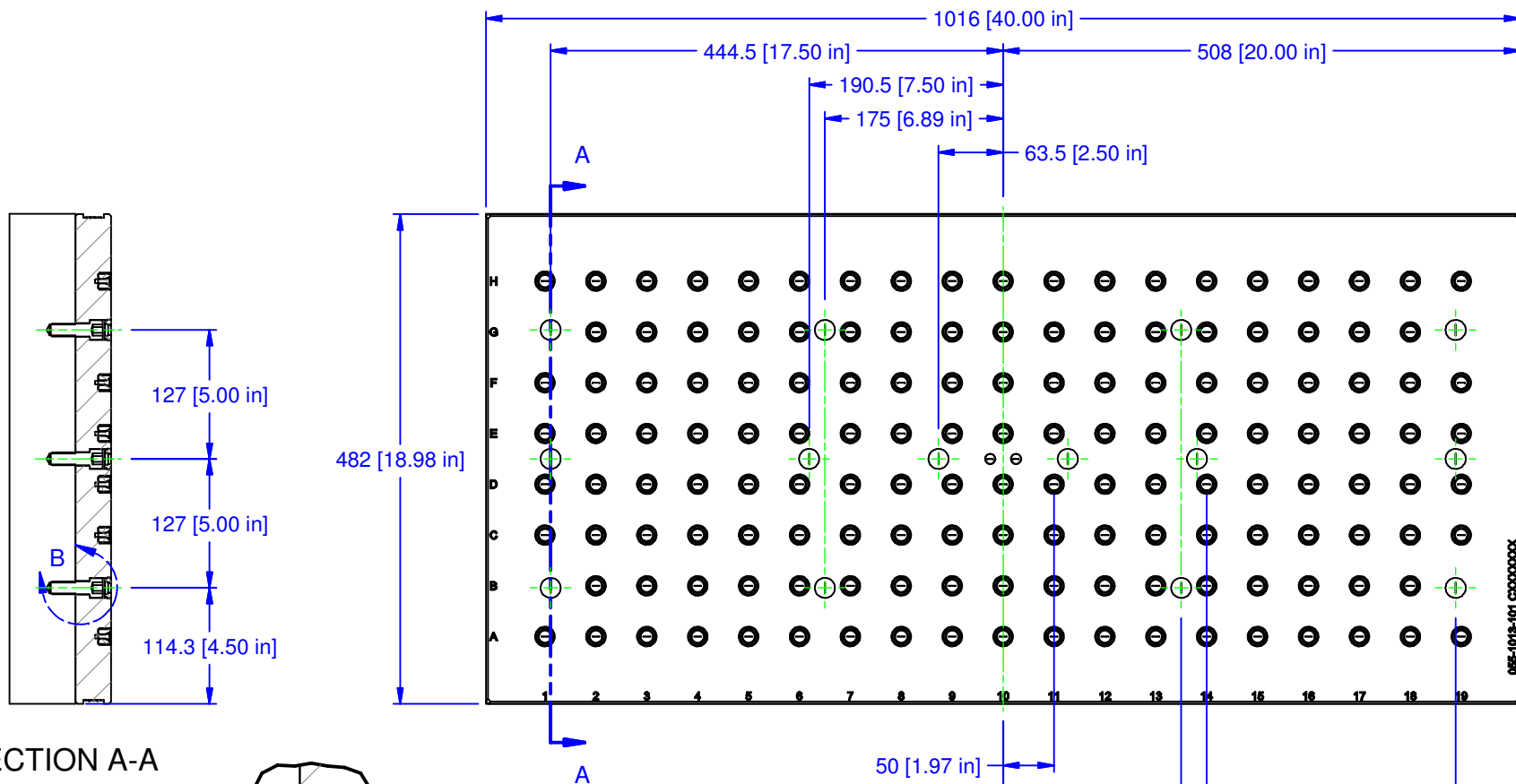
MATERIAL: NA
HARDNESS: NA
COATING: NA
WEIGHT: 213110 g
COMMENTS: UP TO (6) 5QL1540-AL MAY BE USED

UNSPECIFIED TOLERANCES:	
X	±0.2
X.X	±0.1
X.XX	±0.05
ANGLES	±0.5°
ALL DIMENSIONS ARE MILLIMETERS.	

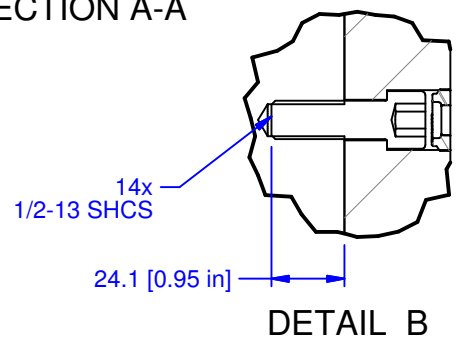
CHICK (800) 332-4425
(724) 772-1644
www.ChickWorkholding.com


UNSPECIFIED EDGES: BREAK 0.3 TO 0.8
UNSPECIFIED FILLETS: RADIUS 0.3 MAX

ITEM: WORK PKG - VMC	
TYPE: HAAS VF-3 APC_I	
FAM: 5QL1540-AL	
STYLE: 1016 X 482	
TDD	2 OF 3
7/25/2011	SVP-HAAS-00122
	REV A



SECTION A-A



MATERIAL: NA	UNSPECIFIED TOLERANCES: X ±0.2 X.X ±0.1 X.XX ±0.05 ANGLES ±0.5° ALL DIMENSIONS ARE MILLIMETERS.	 (800) 332-4425 (724) 772-1644 www.ChickWorkholding.com	ITEM: WORK PKG - VMC	
HARDNESS: NA			TYPE: HAAS VF-3 APC_I	
COATING: NA			FAM: 5QL1540-AL	
WEIGHT: 213110 g			STYLE: 1016 X 482	
COMMENTS: UP TO (6) 5QL1540-AL MAY BE USED			TDD	3 OF 3
		7/25/2011		