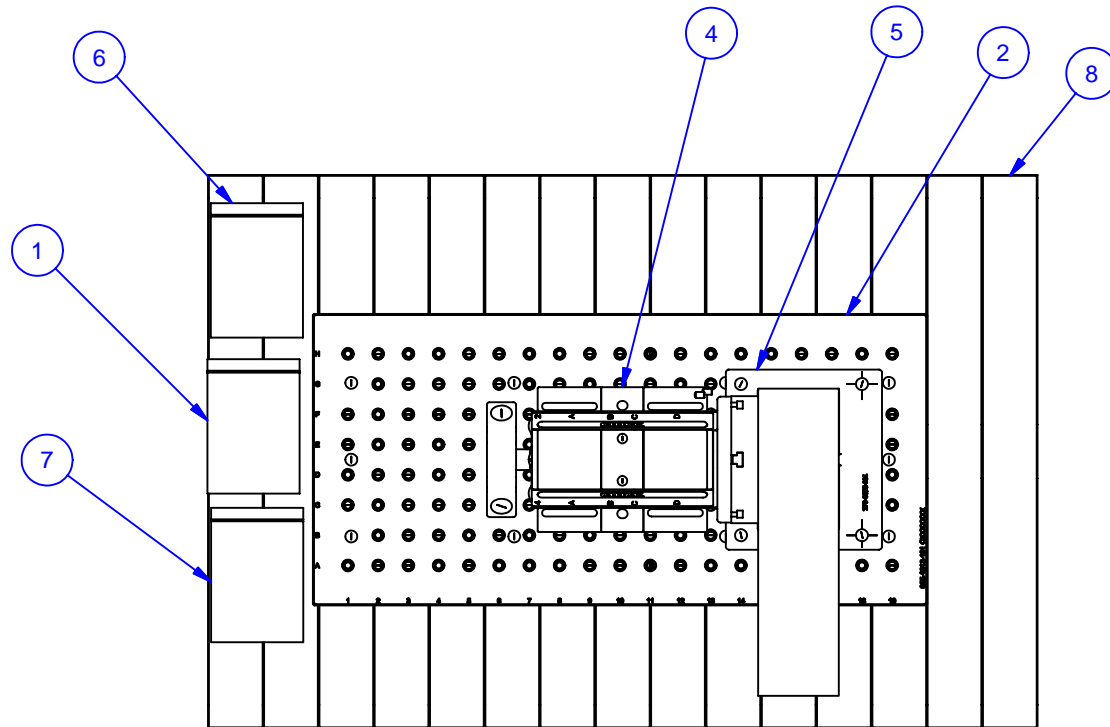

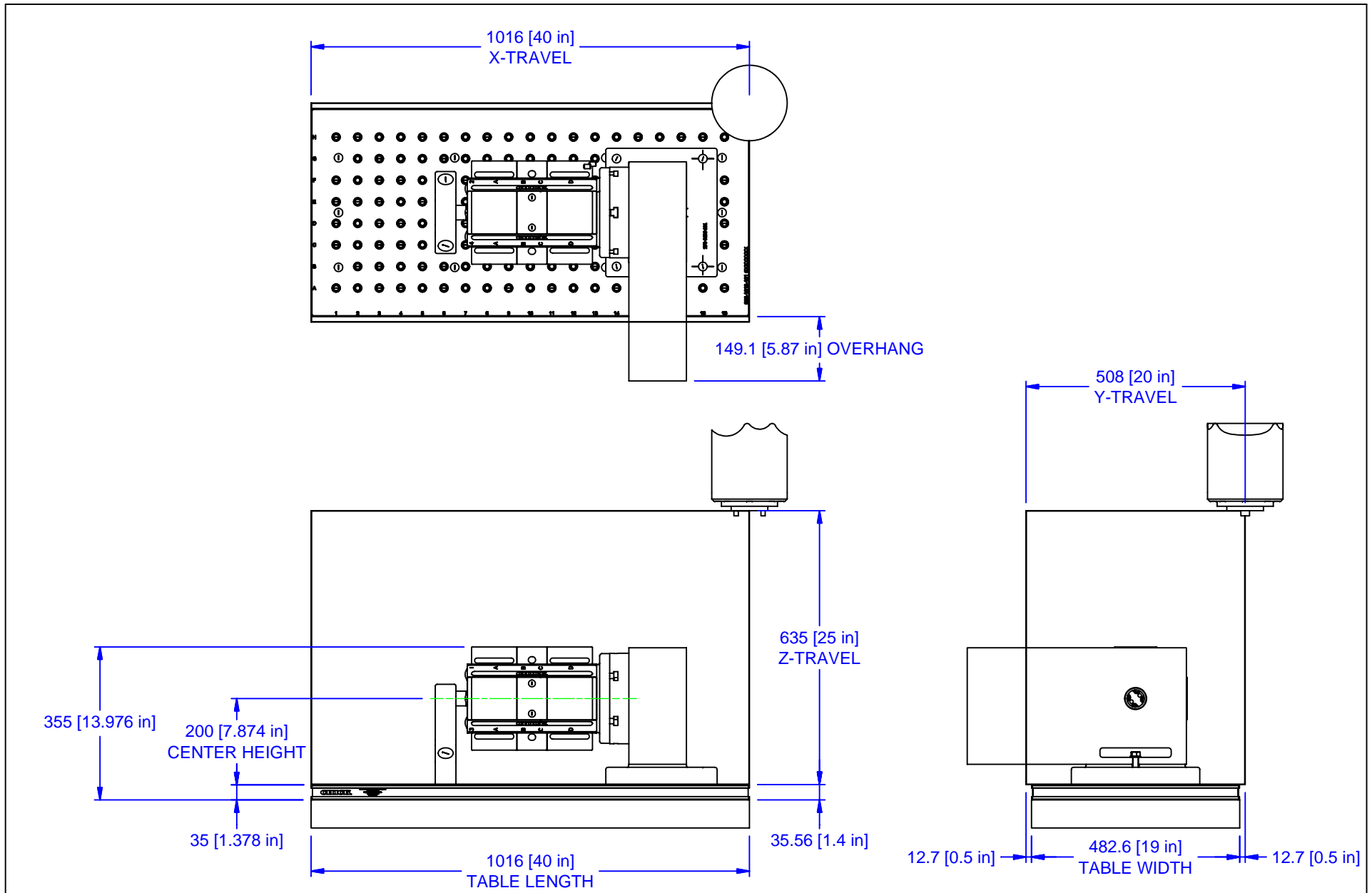



PARTS LIST						
No	QTY	PN	ITEM	TYPE	FAM	STYLE
1	1	050-2-10056	KIT	FOUNDATION MOUNTING	1/2-13 TAPPED HOLE	(14) 1/2-13 X 1.5" SHCS
2	1	055-1013-01	FOUNDATION ASSY	HAAS VF-3 APC	STANDARD GRID	1016 X 482
3	1	060-0208-102	ADAPTER PLATE (ML10-41)	SPINDLE INTERFACE	HAAS HRT-210	208 DIA X 30 THK
4	1	060-1-10003	ASSEMBLY	INDEXER SUBSYSTEM	SYSTEM 5	5IS1030-41
5	1	270-0696-101	RISER BLOCK (200mm C.H.)	FOUNDATION INTERFACE	HAAS HRT-210	298 X 258 X 47.6
6	1	270-2-10038	KIT	ROTARY TABLE MOUNTING	HAAS HRT-210	FOUNDATION INTERFACE
7	1	270-2-10061	KIT	ADAPTOR PLATE MOUNTING	HAAS HRT-210	M12 SHCS / 14mm T-NUT
8	1	990-50-002	PACKAGING	WOOD SHIPPING PALLET	36" X 54"	NA

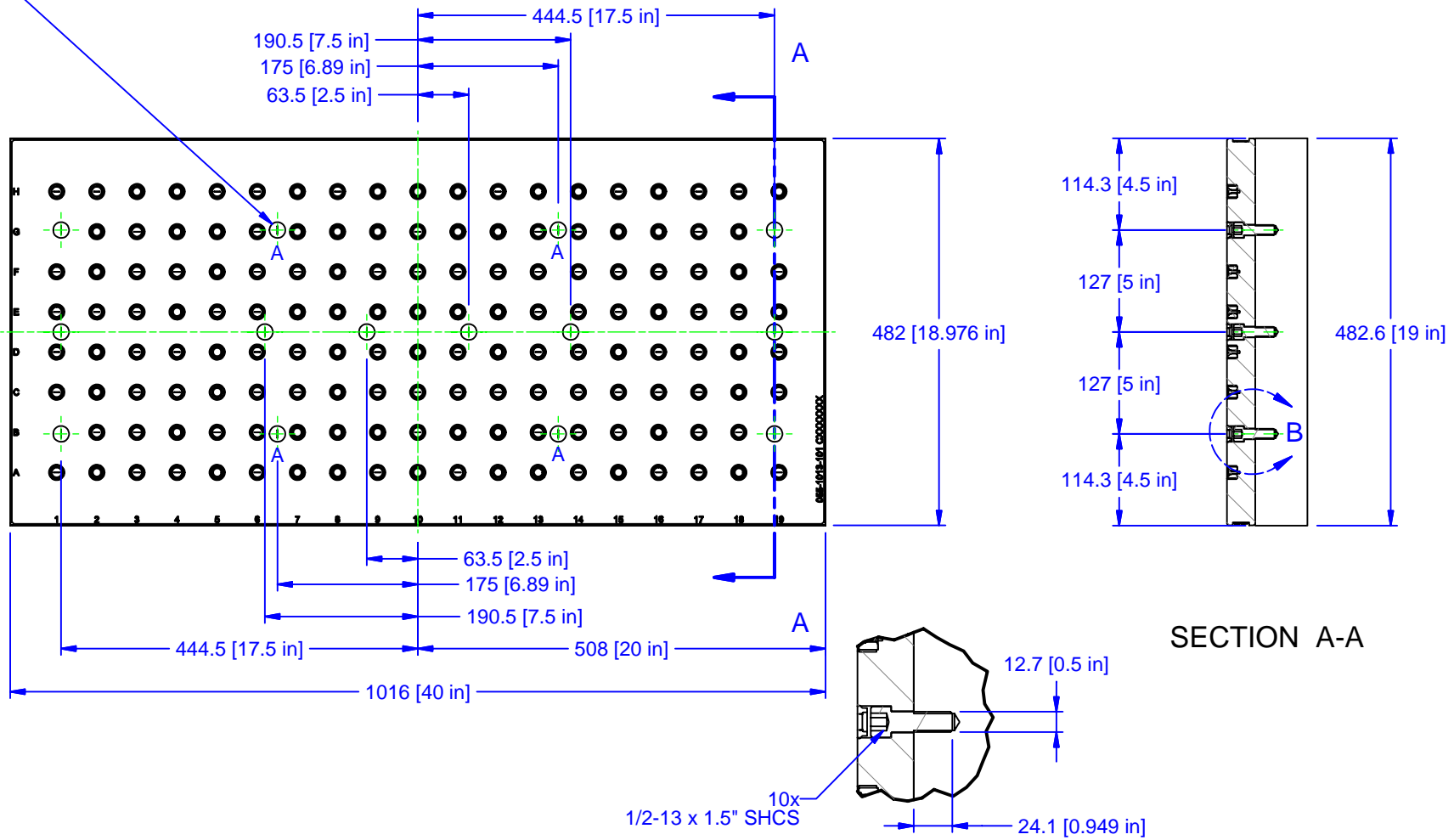


MATERIAL:	UNSPECIFIED TOLERANCES: X ±0.2 X.X ±0.1 X.XX ±0.05 ANGLES ±0.5° ALL DIMENSIONS ARE MILLIMETERS.	 (800) 332-4425 (724) 772-1644 <a href="http://www.ChickWorkholding.com">www.ChickWorkholding.com</a>	ITEM: <b>WORK PKG</b>	TTK 1 OF 3 2/15/2007	REV <b>A1</b>
HARDNESS: <b>NA</b>			TYPE: <b>HAAS VF-3 APC</b>		
COATING: <b>NA</b>			FAM: <b>5IS1030-41</b>		
WEIGHT:			STYLE: <b>VF-3 APC</b>		
COMMENTS:	UNSPECIFIED EDGES: BREAK 0.3 TO 0.8 UNSPECIFIED FILLETS: RADIUS 0.3 MAX		<b>5VP-HAAS-00240</b>		



MATERIAL:	UNSPECIFIED TOLERANCES: X ±0.2 X.X ±0.1 X.XX ±0.05 ANGLES ±0.5° ALL DIMENSIONS ARE MILLIMETERS.	 (800) 332-4425 (724) 772-1644 <a href="http://www.ChickWorkholding.com">www.ChickWorkholding.com</a>	ITEM: <b>WORK PKG</b>			
HARDNESS: <b>NA</b>			TYPE: <b>HAAS VF-3 APC</b>			
COATING: <b>NA</b>			FAM: <b>5IS1030-41</b>			
WEIGHT:			STYLE: <b>VF-3 APC</b>			
COMMENTS:						
		UNSPECIFIED EDGES: BREAK 0.3 TO 0.8	TTK	2 OF 3	5VP-HAAS-00240	REV <b>A1</b>
		UNSPECIFIED FILLETS: RADIUS 0.3 MAX	2/15/2007			

ADDITIONAL MOUNTING HOLES (MARKED BY "A") CAN BE USED TO ADD RIGIDITY TO THE FOUNDATION. MACHINE TABLE MUST BE MODIFIED TO UTILIZE HOLES. (NOT REQUIRED) 4 HOLES.



SECTION A-A

DETAIL B  
SCALE 1 / 4

MATERIAL:	UNSPECIFIED TOLERANCES: X ±0.2 X.X ±0.1 X.XX ±0.05 ANGLES ±0.5° ALL DIMENSIONS ARE MILLIMETERS.	(800) 332-4425 (724) 772-1644 <a href="http://www.ChickWorkholding.com">www.ChickWorkholding.com</a>	ITEM: <b>WORK PKG</b>	TTK 3 OF 3 2/15/2007	REV <b>A1</b>
HARDNESS: <b>NA</b>			TYPE: <b>HAAS VF-3 APC</b>		
COATING: <b>NA</b>			FAM: <b>5IS1030-41</b>		
WEIGHT:			STYLE: <b>VF-3 APC</b>		
COMMENTS:			UNSPECIFIED EDGES: BREAK 0.3 TO 0.8 UNSPECIFIED FILLETS: RADIUS 0.3 MAX		