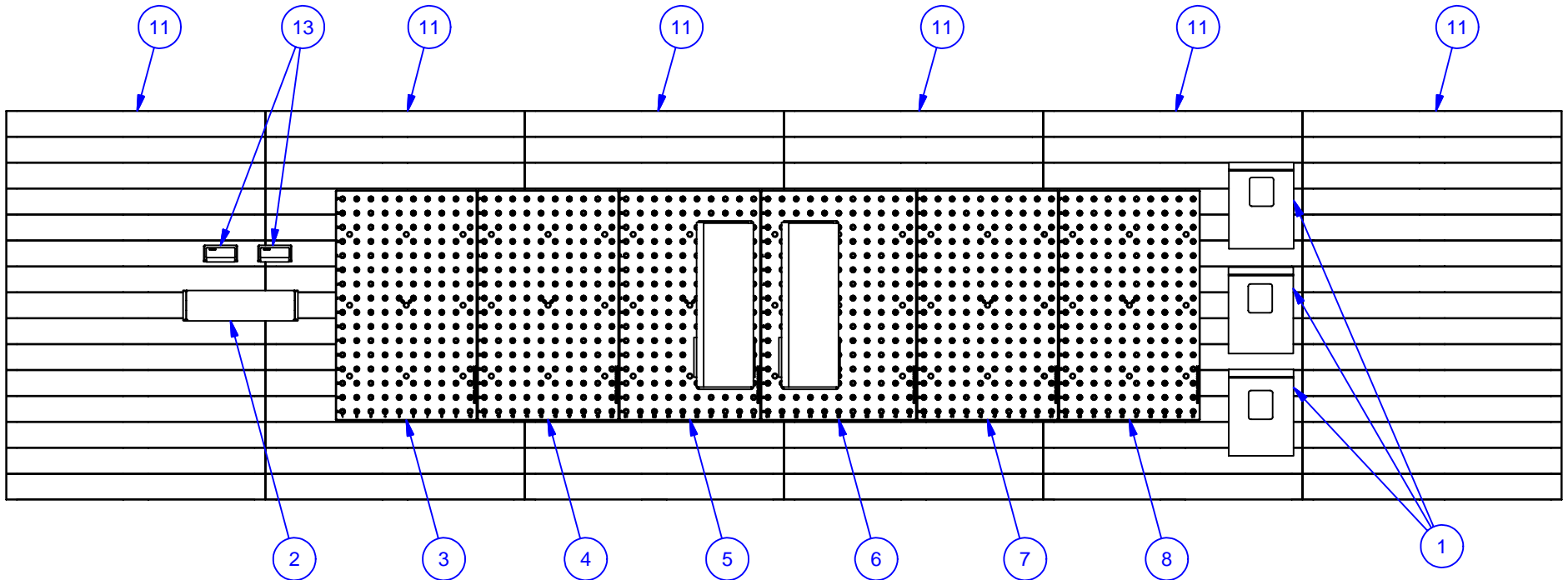

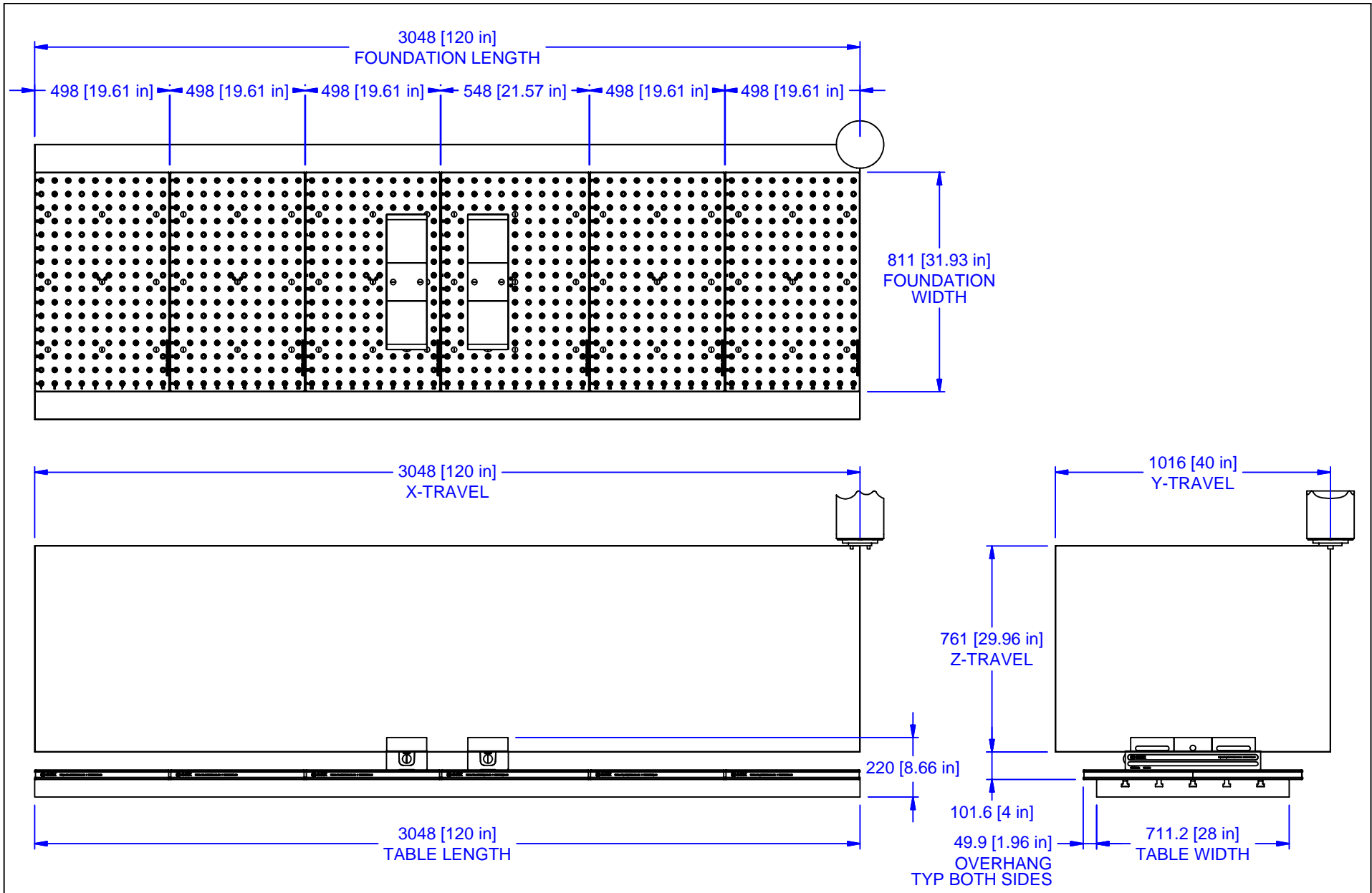



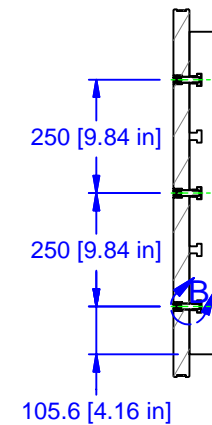
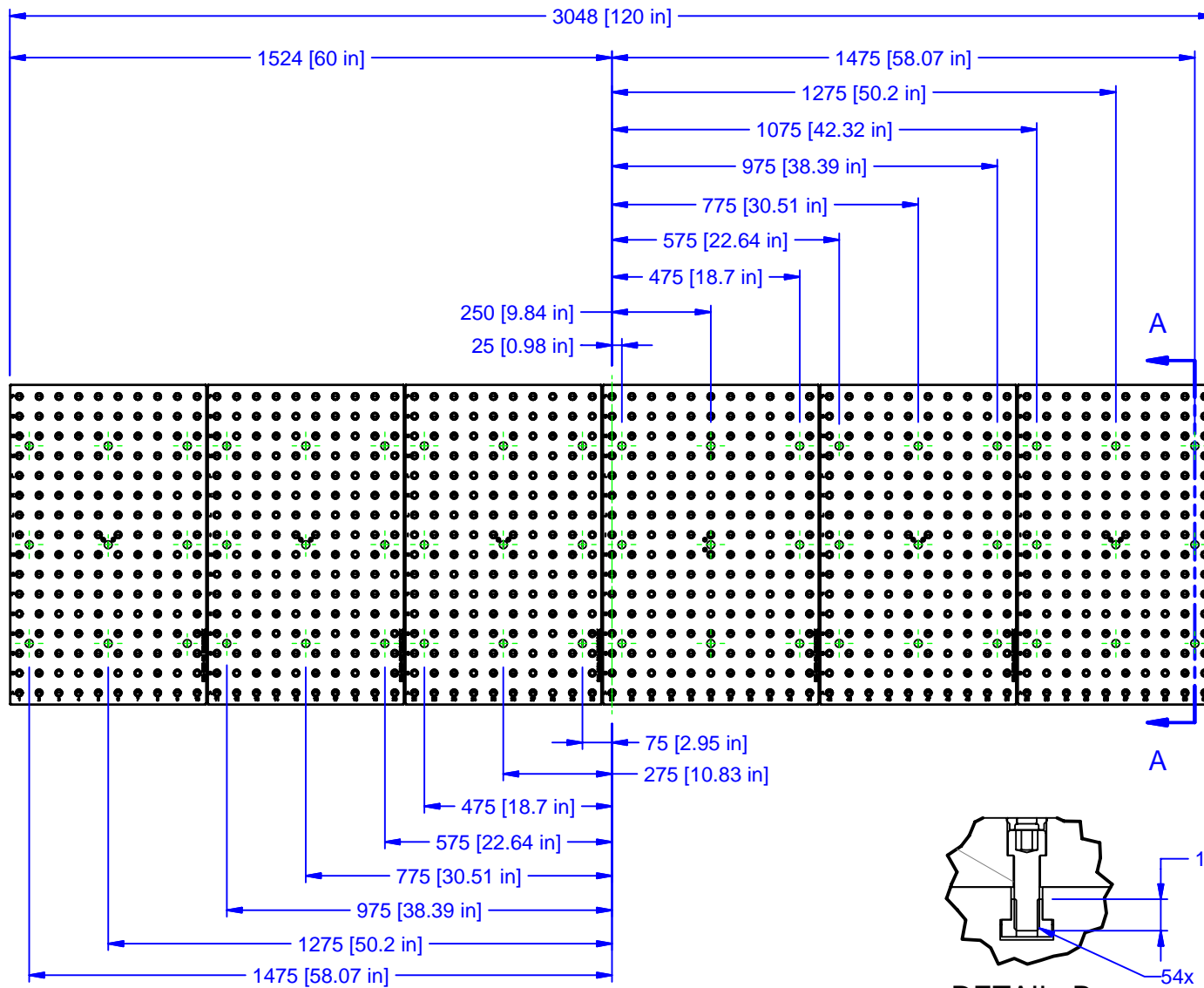
| PARTS LIST | | | | | | |
|------------|-----|-------------|-----------------|-------------------------|---------------------|-------------------------|
| No | QTY | PN | ITEM | TYPE | FAM | STYLE |
| 1 | 3 | 050-2-10060 | KIT | FOUNDATION MOUNTING | 5/8" T-SLOT | (18) 1/2-13 X 1.5" SHCS |
| 2 | 1 | 050-2-90001 | KIT | FOUNDATION ALIGNMENT | STANDARD GRID | 50mm SEAM |
| 3 | 1 | 055-1207-01 | FOUNDATION ASSY | WP STANDARD | HAAS VF-10 | 498 x 811 |
| 4 | 1 | 055-1207-02 | FOUNDATION ASSY | WP STANDARD | HAAS VF-10 | 498 x 811 |
| 5 | 1 | 055-1207-03 | FOUNDATION ASSY | WP STANDARD | HAAS VF-10 | 498 x 811 |
| 6 | 1 | 055-1207-04 | FOUNDATION ASSY | WP STANDARD | HAAS VF-10 | 548 x 811 |
| 7 | 1 | 055-1207-05 | FOUNDATION ASSY | WP STANDARD | HAAS VF-10 | 498 x 811 |
| 8 | 1 | 055-1207-06 | FOUNDATION ASSY | WP STANDARD | HAAS VF-10 | 498 x 811 |
| 10 | 2 | 156-9-10003 | 5QL1550-AL | ALUMINUM QWIK-LOK | 5-1550 | SHIPPING GROUP |
| 11 | 6 | 990-1-10002 | SHIPPING CRATE | FOUNDATION | LARGE | 54" X 36" |
| 12 | 6 | 990-50-010 | LID | FOUNDATION CRATE | LARGE | 54" X 36" X 0.5" |
| 13 | 2 | 058-9-10001 | MPIN12S | ROUND & DIAMOND PIN SET | SYSTEM 5 & M SYSTEM | 12mm DIA. x 19mm LONG |



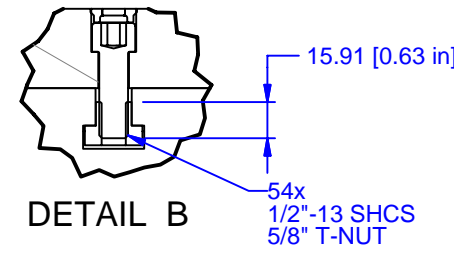
| | | | | | |
|-------------------------|--|--|-----------------------------|----------------|----------|
| MATERIAL: NA | UNSPECIFIED TOLERANCES: X ±0.2 X.X ±0.1 X.XX ±0.05 ANGLES ±0.5° ALL DIMENSIONS ARE MILLIMETERS. |  (800) 332-4425 (724) 772-1644 www.ChickWorkholding.com | ITEM: WORK PKG - VMC | | |
| HARDNESS: NA | | | TYPE: 3048 x 811 | | |
| COATING: NA | | | FAM: 5QL1550-AL (2) | | |
| WEIGHT: 929210 g | | | STYLE: HAAS VF-11_I | | |
| COMMENTS: | UNSPECIFIED EDGES: BREAK 0.3 TO 0.8 UNSPECIFIED FILLETS: RADIUS 0.3 MAX | TDD | 1 OF 3 | 5VP-HAAS-00262 | REV A |
| | | | 8/19/2008 | | |



| | | | | | | |
|------------------|--|--|----------------------|--------|----------------|----------|
| MATERIAL: NA | UNSPECIFIED TOLERANCES: X ±0.2 X.X ±0.1 X.XX ±0.05 ANGLES ±0.5° ALL DIMENSIONS ARE MILLIMETERS. |  (800) 332-4425 (724) 772-1644 www.ChickWorkholding.com | ITEM: WORK PKG - VMC | | | |
| HARDNESS: NA | | | TYPE: 3048 x 811 | | | |
| COATING: NA | | | FAM: 5QL1550-AL (2) | | | |
| WEIGHT: 929210 g | | | STYLE: HAAS VF-11_I | | | |
| COMMENTS: | | | | | | |
| | | UNSPECIFIED EDGES: BREAK 0.3 TO 0.8 | TDD | 2 OF 3 | 5VP-HAAS-00262 | REV A |
| | | UNSPECIFIED FILLETS: RADIUS 0.3 MAX | 8/19/2008 | | | |



SECTION A-A



DETAIL B

| | | | | | | |
|-------------------------|--|--|-----------------------------|--------|----------------|----------|
| MATERIAL: NA | UNSPECIFIED TOLERANCES: X ±0.2 X.X ±0.1 X.XX ±0.05 ANGLES ±0.5° ALL DIMENSIONS ARE MILLIMETERS. | (800) 332-4425 (724) 772-1644 www.ChickWorkholding.com | ITEM: WORK PKG - VMC | | | |
| HARDNESS: NA | | | TYPE: 3048 x 811 | | | |
| COATING: NA | | | FAM: 5QL1550-AL (2) | | | |
| WEIGHT: 929210 g | | | STYLE: HAAS VF-11_I | | | |
| COMMENTS: | | | | | | |
| | | UNSPECIFIED EDGES: BREAK 0.3 TO 0.8 | TDD | 3 OF 3 | 5VP-HAAS-00262 | REV A |
| | | UNSPECIFIED FILLETS: RADIUS 0.3 MAX | 8/19/2008 | | | |