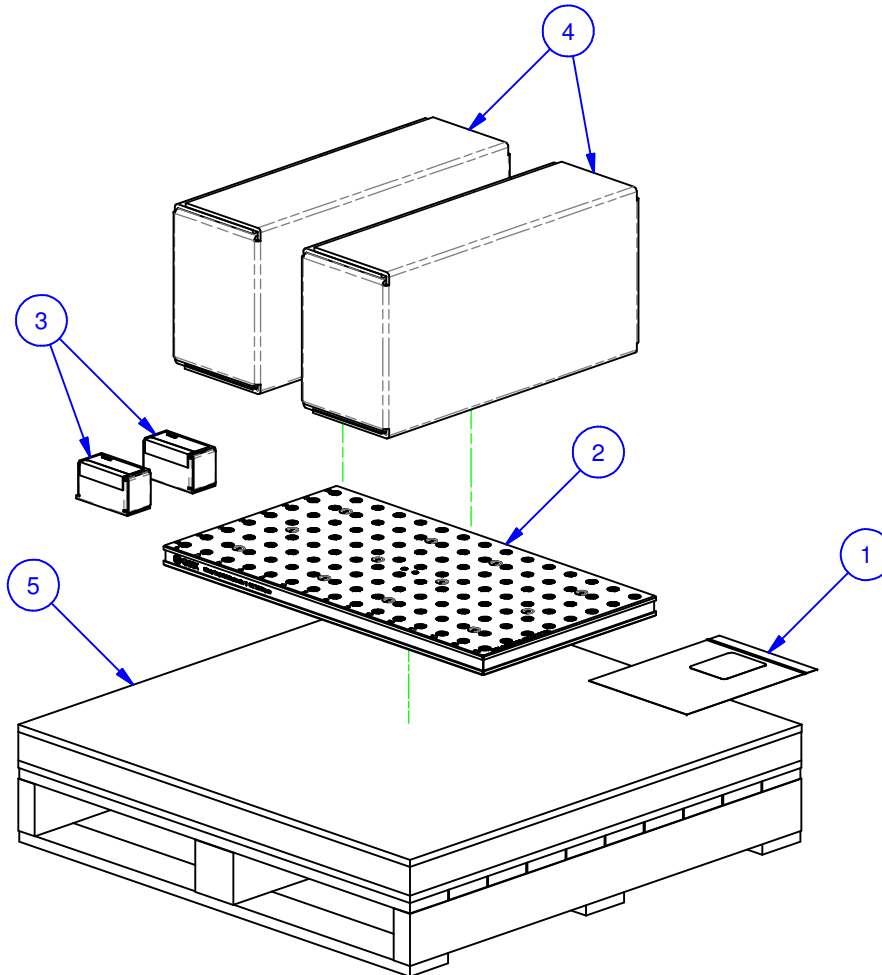


PARTS LIST						
No	QTY	PN	ITEM	TYPE	FAM	STYLE
1	1	050-2-10094	KIT	FOUNDATION MOUNTING	5/8" SLOT	(12) 1/2-13 X 1.25" SHCS
2	1	055-1452-01	FOUNDATION ASSY	WP STANDARD	HAAS DT-1_M	748 X 406
3	2	058-9-10001	MPIN12S	ROUND & DIAMOND PIN SET	SYSTEM 5 & M SYSTEM	12mm DIA. x 19mm LONG
4	2	156-9-10001	5QL1540-AL	ALUMINUM QWIK-LOK	5-1540	SHIPPING GROUP
5	1	990-50-021	PACKAGING	SHIPPING CRATE	FOUNDATIONS	36" X 36"

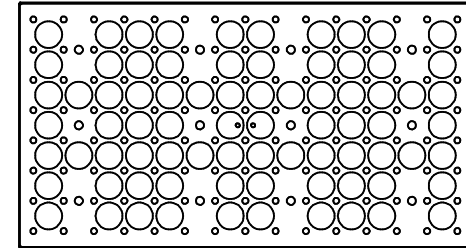
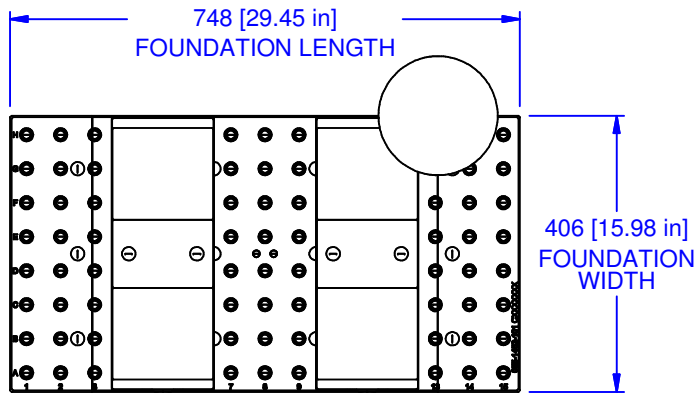


MATERIAL: NA
HARDNESS: NA
COATING: NA
WEIGHT: 134761 g
COMMENTS: UP TO (3) 5QL1540-AL'S MAY BE USED

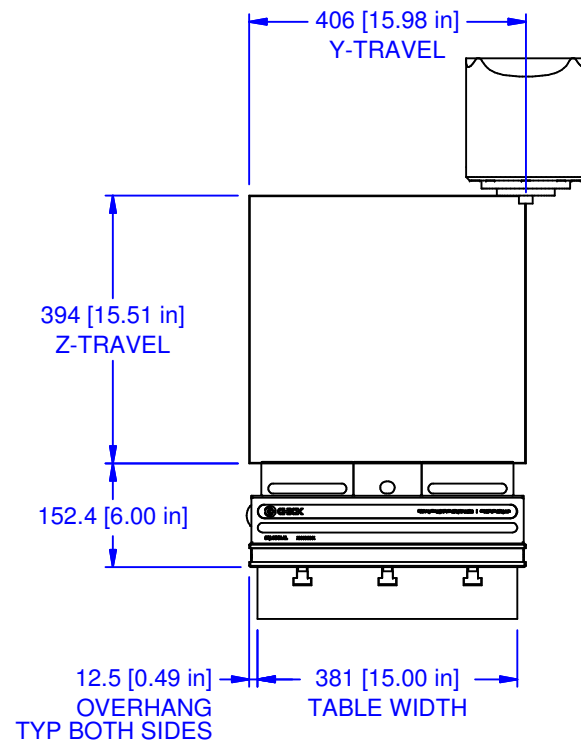
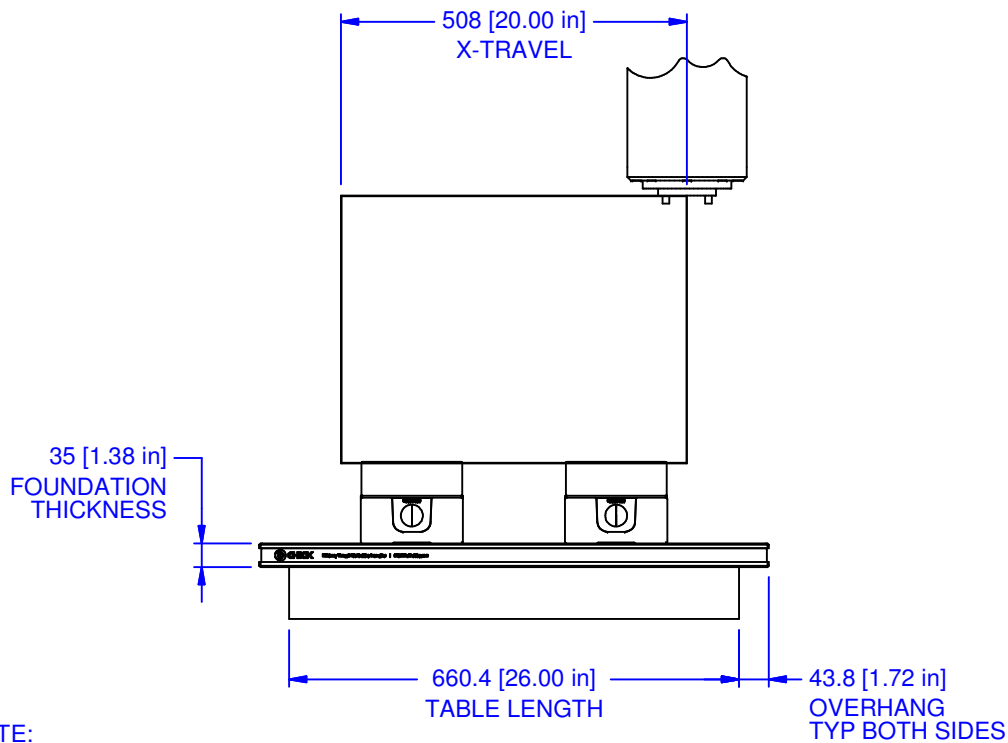
UNSPECIFIED TOLERANCES:
 X ±0.2
 X.X ±0.1
 X.XX ±0.05
 ANGLES ±0.5°
 ALL DIMENSIONS ARE MILLIMETERS.

CHICK (800) 332-4425
 (724) 772-1644
www.ChickWorkholding.com
 UNSPECIFIED EDGES: BREAK 0.3 TO 0.8
 UNSPECIFIED FILLETS: RADIUS 0.3 MAX

ITEM: WORK PKG - VMC		REV A
TYPE: HAAS DT-1_I		
FAM: 5QL1540-AL		SVP-HAAS-00430
STYLE: 748 X 406		
TDD	1 OF 3	
1/21/2011		



A GRID OF BLIND HOLES IS CORED OUT OF THE UNDERSIDE OF THE FOUNDATION TO REDUCE THE OVERALL WEIGHT OF THE SETUP SEE NOTE **1**



NOTE:

1 MAX WEIGHT ON THIS MACHINE IS 68kg [150lb] AT MAXIMUM ACCELERATION; UP TO 227 kg [500lb] IS POSSIBLE WITH REDUCED ACCELERATIONS.

MATERIAL:	NA
HARDNESS:	NA
COATING:	NA
WEIGHT:	134761 g
COMMENTS:	UP TO (3) 5QL1540-AL'S MAY BE USED

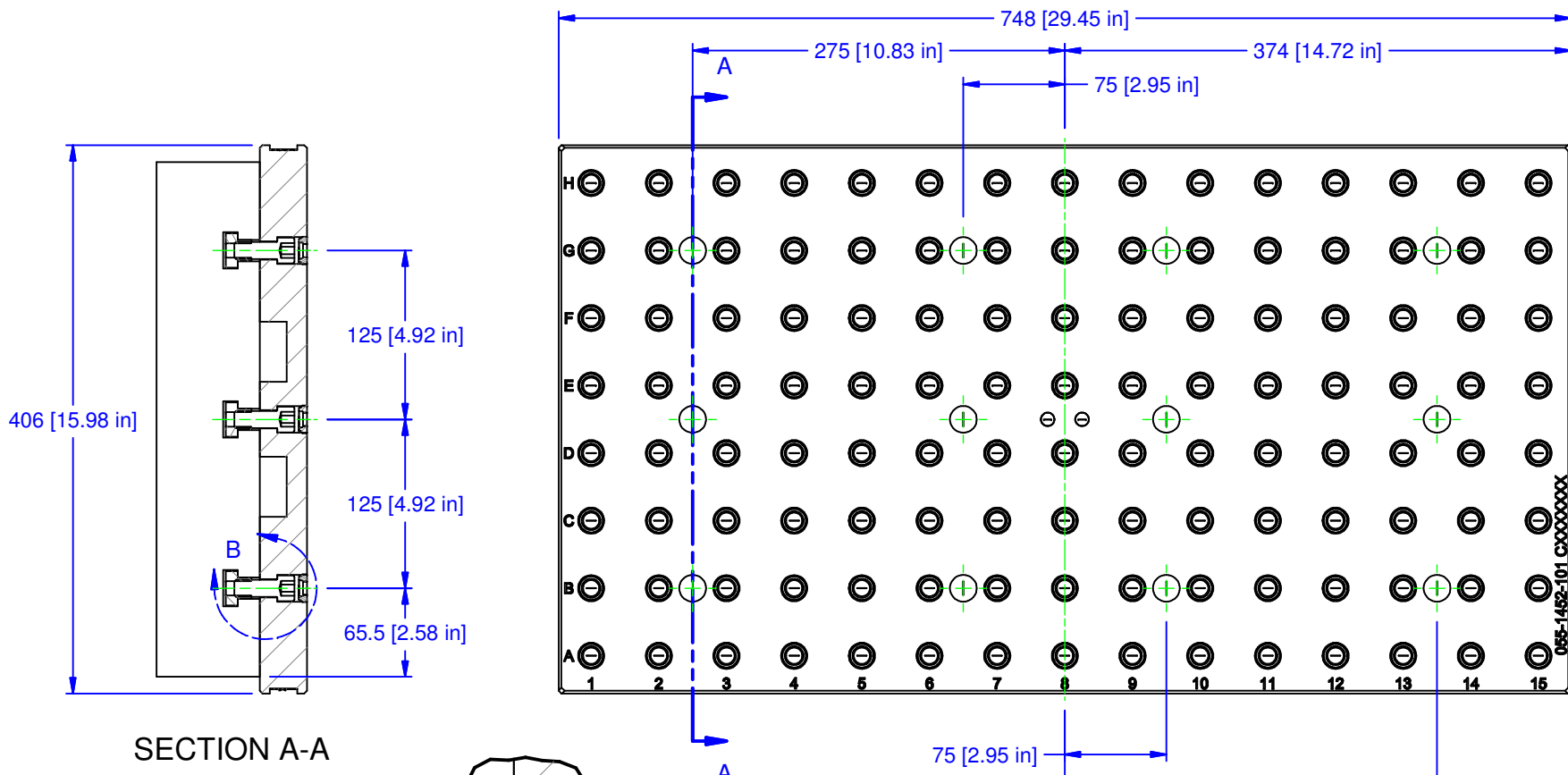
UNSPECIFIED TOLERANCES:
 X ±0.2
 X.X ±0.1
 X.XX ±0.05
 ANGLES ±0.5°
 ALL DIMENSIONS ARE MILLIMETERS.

CHICK (800) 332-4425
 (724) 772-1644
www.ChickWorkholding.com

ITEM:	WORK PKG - VMC
TYPE:	HAAS DT-1_I
FAM:	5QL1540-AL
STYLE:	748 X 406

UNSPECIFIED EDGES: BREAK 0.3 TO 0.8
 UNSPECIFIED FILLETS: RADIUS 0.3 MAX

TDD	2 OF 3	5VP-HAAS-00430	REV A
1/21/2011			



SECTION A-A

DETAIL B

MATERIAL: NA
HARDNESS: NA
COATING: NA
WEIGHT: 134761 g
COMMENTS: UP TO (3) 5QL1540-AL'S MAY BE USED

UNSPECIFIED TOLERANCES:
 X ±0.2
 X.X ±0.1
 X.XX ±0.05
 ANGLES ±0.5°
 ALL DIMENSIONS ARE MILLIMETERS.

CHICK (800) 332-4425
 (724) 772-1644
www.ChickWorkholding.com

ITEM: WORK PKG - VMC		REV A
TYPE: HAAS DT-1_I		
FAM: 5QL1540-AL		5VP-HAAS-00430
STYLE: 748 X 406		
TDD	3 OF 3	
1/21/2011		