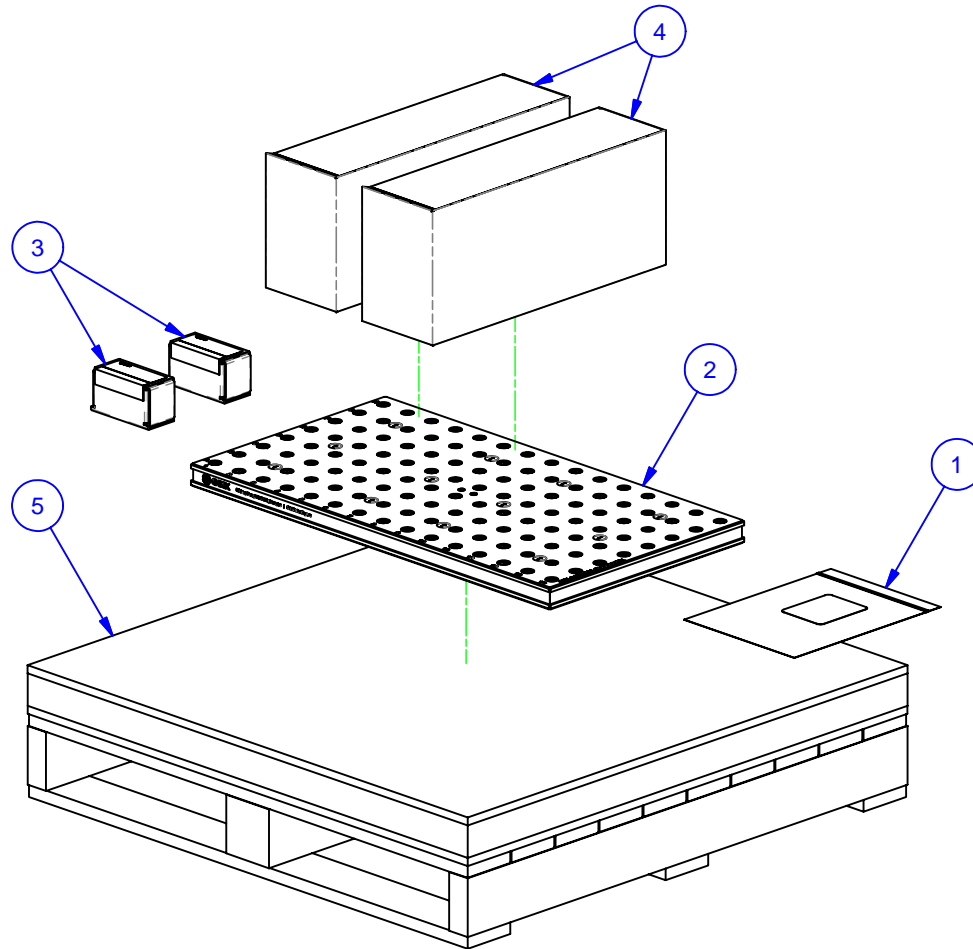

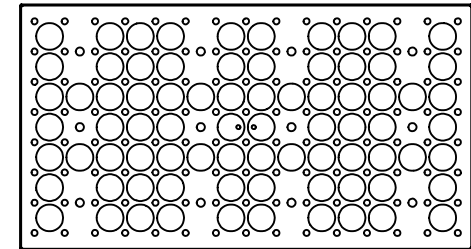
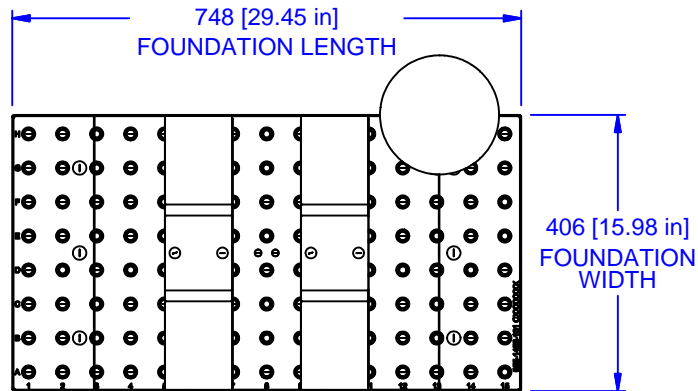


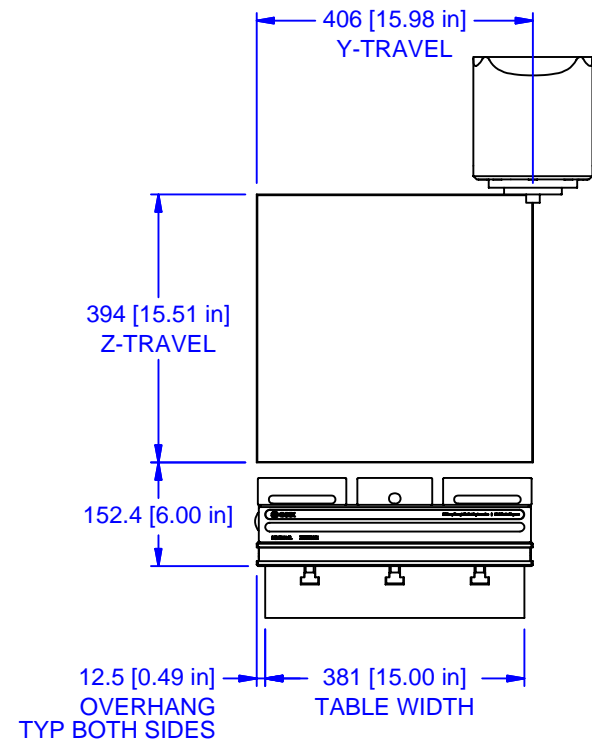
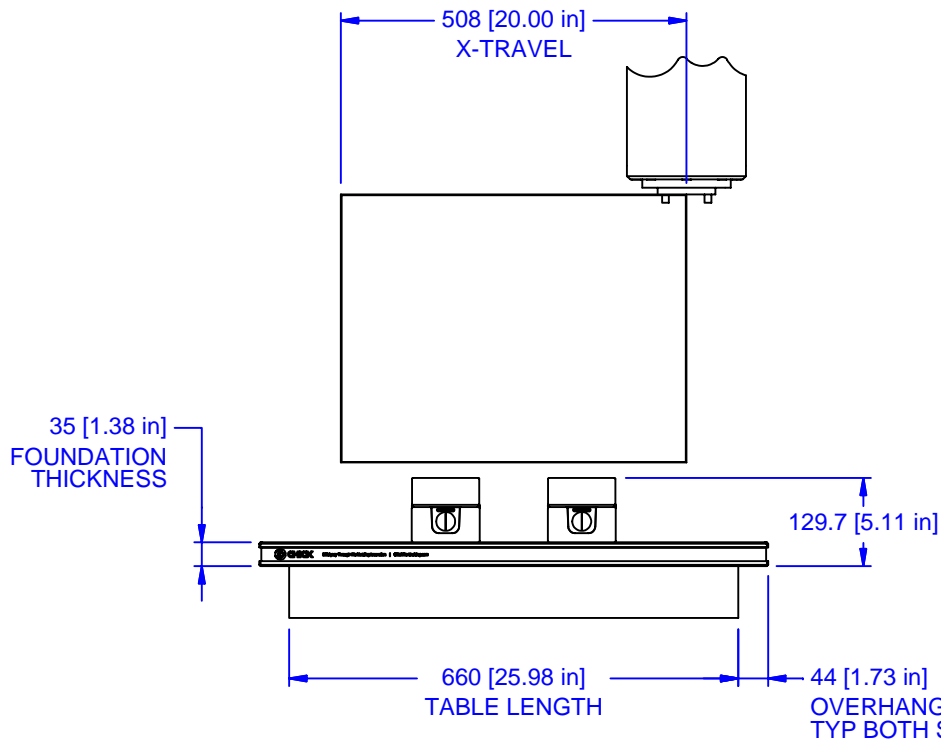
PARTS LIST						
No	QTY	PN	ITEM	TYPE	FAM	STYLE
1	1	050-2-10128	KIT	FOUNDATION MOUNTING	16mm T-SLOT	(12) M12 X 35 SHCS
2	1	055-1452-01	FOUNDATION ASSY	WP STANDARD	HAAS DT-1_M	748 X 406
3	2	058-9-10001	MPIN12S	ROUND & DIAMOND PIN SET	SYSTEM 5 & M SYSTEM	12mm DIA. x 19mm LONG
4	2	106-9-10003	5QL1040-AL	ALUMINUM QWIK-LOK	5-1040	SHIPPING GROUP
5	1	990-50-021	PACKAGING	SHIPPING CRATE	FOUNDATIONS	36" X 36"



MATERIAL: NA	UNSPECIFIED TOLERANCES: X ±0.2 X.X ±0.1 X.XX ±0.05 ANGLES ±0.5° ALL DIMENSIONS ARE MILLIMETERS.	 (800) 332-4425 (724) 772-1644 www.ChickWorkholding.com	ITEM: WORK PKG - VMC	
HARDNESS: NA			TYPE: HAAS DT-1_M	
COATING: NA			FAM: 5QL1040-AL	
WEIGHT: 111088 g			STYLE: 748 X 406	
COMMENTS:			TDD	1 OF 3
		5/13/2010		



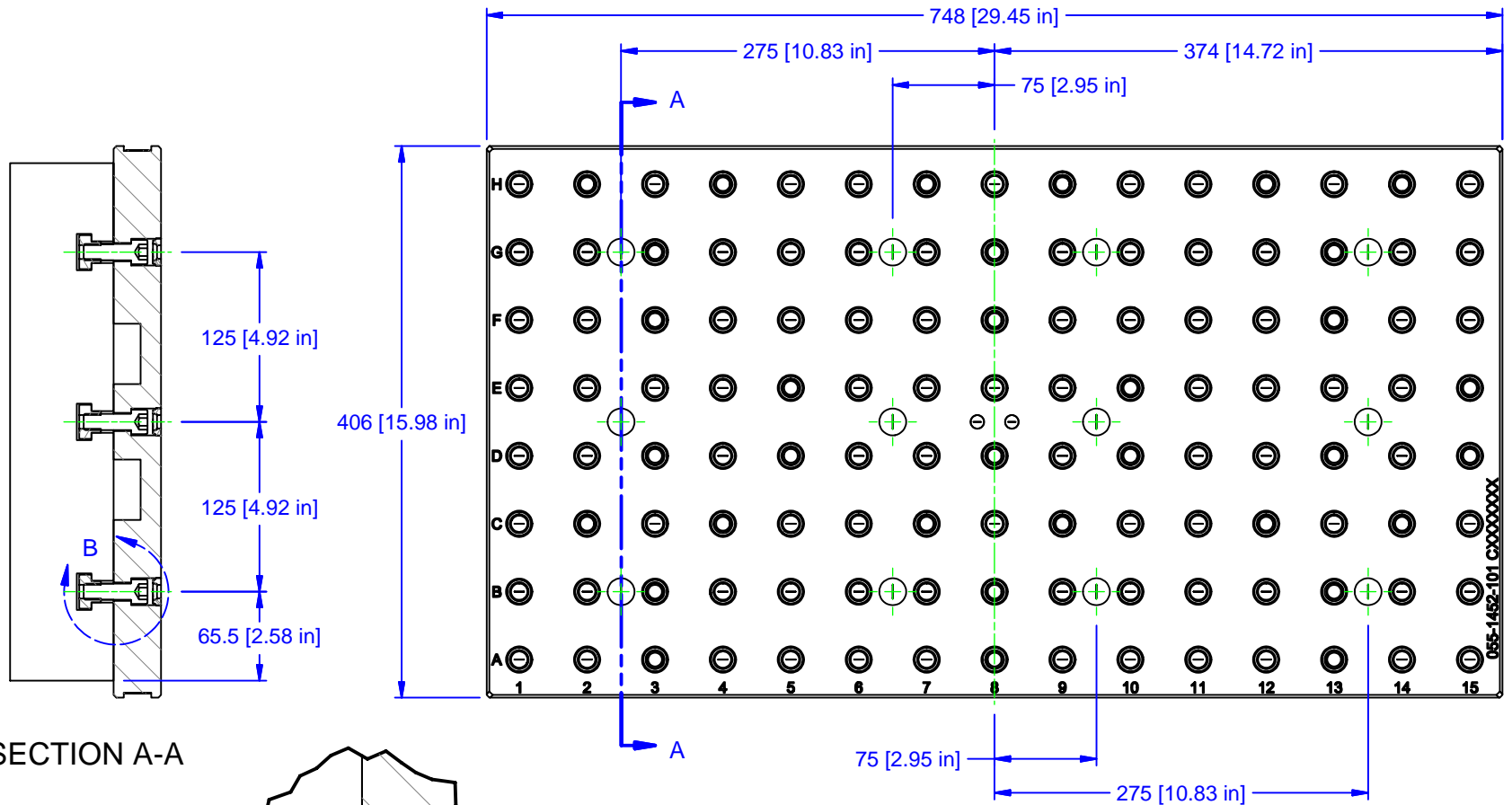
A GRID OF BLIND HOLES IS CORED OUT OF THE UNDERSIDE OF THE FOUNDATION TO REDUCE THE OVERALL WEIGHT OF THE SETUP
SEE NOTE **1**



NOTE:

1 MAX WEIGHT ON THIS MACHINE IS 68kg [150lb] AT MAXIMUM ACCELERATION;
UP TO 227kg [500lb] IS POSSIBLE WITH REDUCED ACCELERATIONS.

MATERIAL: NA	UNSPECIFIED TOLERANCES: X ±0.2 X.X ±0.1 X.XX ±0.05 ANGLES ±0.5° ALL DIMENSIONS ARE MILLIMETERS.	(800) 332-4425 (724) 772-1644 www.ChickWorkholding.com	ITEM: WORK PKG - VMC			
HARDNESS: NA			TYPE: HAAS DT-1_M			
COATING: NA			FAM: 5QL1040-AL			
WEIGHT: 111088 g			STYLE: 748 X 406			
COMMENTS:			TDD	2 OF 3	5VP-HAAS-00452	REV A
			5/13/2010			



SECTION A-A

DETAIL B

12x
M12 SHCS / 16mm T-NUTS

12.7 [0.50 in]

MATERIAL: NA
HARDNESS: NA
COATING: NA
WEIGHT: 111088 g
COMMENTS:

UNSPECIFIED TOLERANCES:
 X ±0.2
 X.X ±0.1
 X.XX ±0.05
 ANGLES ±0.5°
 ALL DIMENSIONS ARE MILLIMETERS.

CHICK (800) 332-4425
 (724) 772-1644
www.ChickWorkholding.com

ITEM: WORK PKG - VMC		REV A
TYPE: HAAS DT-1_M		
FAM: 5QL1040-AL		5VP-HAAS-00452
STYLE: 748 X 406		
TDD	3 OF 3	
5/13/2010		