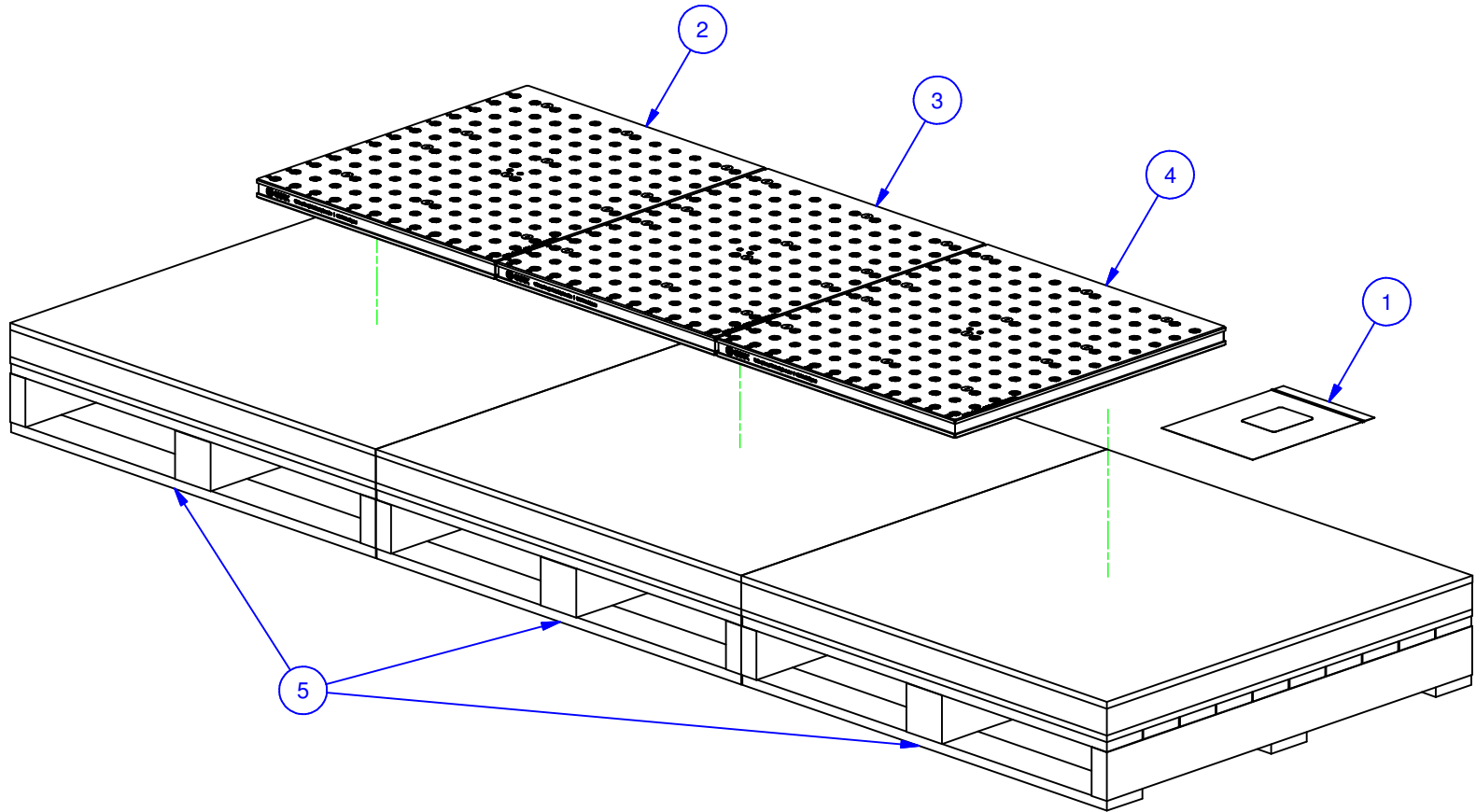

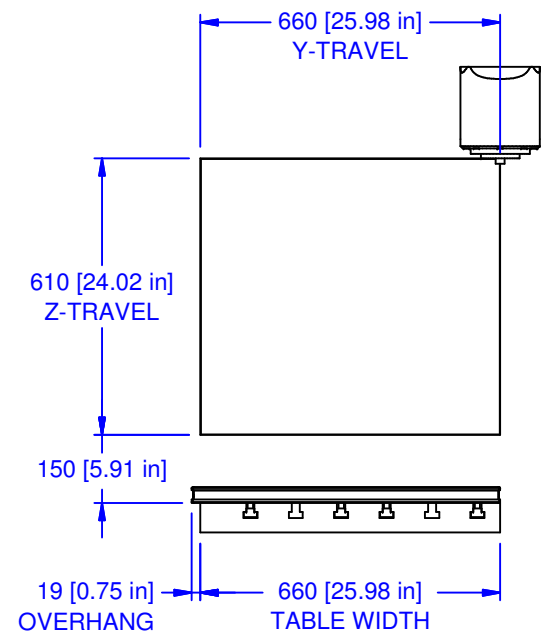
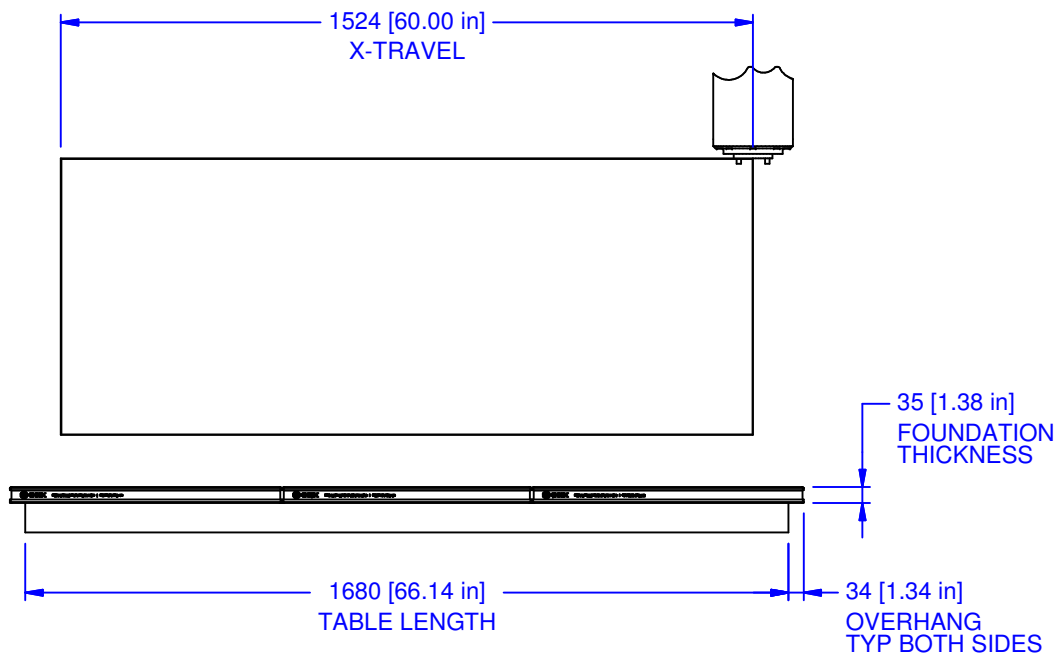
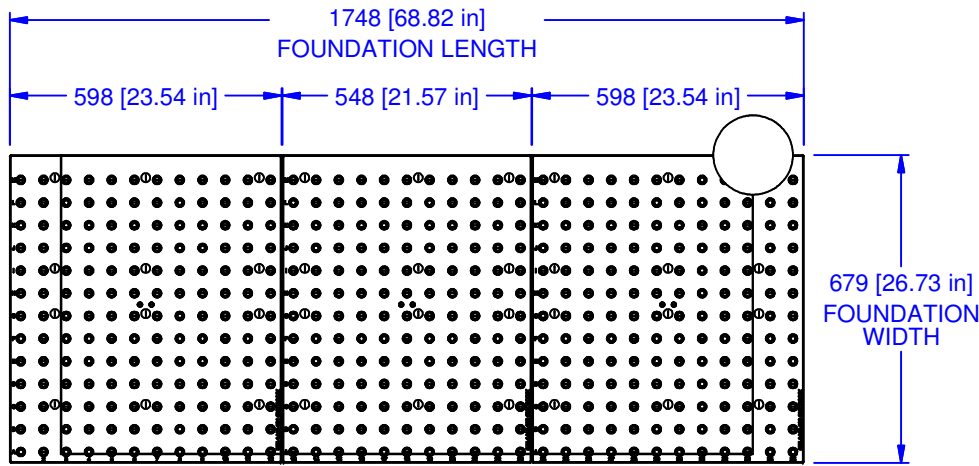



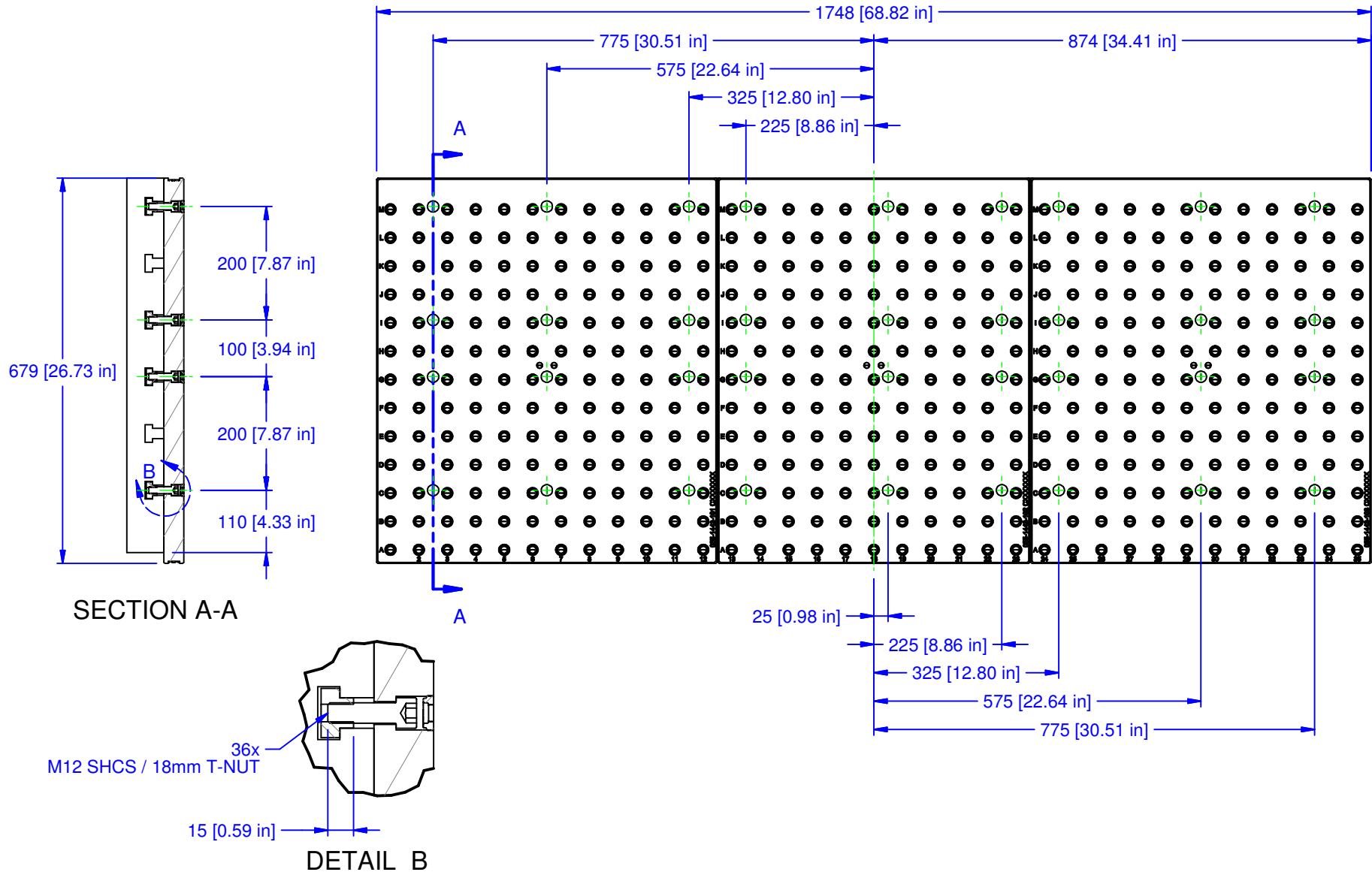
PARTS LIST						
No	QTY	PN	ITEM	TYPE	FAM	STYLE
1	1	050-2-10031	KIT	FOUNDATION MOUNTING	18mm T- SLOT	(36) M12 X 40 SHCS
2	1	055-1442-01	FOUNDATION ASSY	WP STANDARD	HURCO VMX60	598 X 679 (LEFT PLATE)
3	1	055-1442-02	FOUNDATION ASSY	WP STANDARD	HURCO VMX60	548 X 679 (CENTER PLATE)
4	1	055-1442-03	FOUNDATION ASSY	WP STANDARD	HURCO VMX60	598 X 679 (RIGHT PLATE)
5	3	990-50-021	PACKAGING	SHIPPING CRATE	FOUNDATIONS	36" X 36"



MATERIAL: NA	UNSPECIFIED TOLERANCES: X ±0.2 X.X ±0.1 X.XX ±0.05 ANGLES ±0.5° ALL DIMENSIONS ARE MILLIMETERS.	 (800) 332-4425 (724) 772-1644 www.ChickWorkholding.com	ITEM: WORK PKG - VMC	TDD	1 OF 3	5VP-HURC-00055	REV A
HARDNESS: NA			FAM: HURCO VMX60	12/27/2010			
COATING: NA			FAM: FOUNDATION ONLY				
WEIGHT: 375744 g			STYLE: 1748 X 679				
COMMENTS:		UNSPECIFIED EDGES: BREAK 0.3 TO 0.8 UNSPECIFIED FILLETS: RADIUS 0.3 MAX					



MATERIAL: NA	UNSPECIFIED TOLERANCES: X ±0.2 X.X ±0.1 X.XX ±0.05 ANGLES ±0.5° ALL DIMENSIONS ARE MILLIMETERS.	 (800) 332-4425 (724) 772-1644 www.ChickWorkholding.com	ITEM: WORK PKG - VMC			
HARDNESS: NA			TYPE: HURCO VMX60			
COATING: NA			FAM: FOUNDATION ONLY			
WEIGHT: 375744 g			STYLE: 1748 X 679			
COMMENTS:			TDD	2 OF 3	SVP-HURC-00055	REV A
		UNSPECIFIED EDGES: BREAK 0.3 TO 0.8 UNSPECIFIED FILLETS: RADIUS 0.3 MAX	12/27/2010			



MATERIAL: NA
HARDNESS: NA
COATING: NA
WEIGHT: 375744 g
COMMENTS:

UNSPECIFIED TOLERANCES:
 X ±0.2
 X.X ±0.1
 X.XX ±0.05
 ANGLES ±0.5°
 ALL DIMENSIONS ARE MILLIMETERS.

CHICK (800) 332-4425
 (724) 772-1644
 www.ChickWorkholding.com

UNSPECIFIED EDGES: BREAK 0.3 TO 0.8
 UNSPECIFIED FILLETS: RADIUS 0.3 MAX

ITEM: WORK PKG - VMC	
TYPE: HURCO VMX60	
FAM: FOUNDATION ONLY	
STYLE: 1748 X 679	
TDD	3 OF 3
12/27/2010	5VP-HURC-00055
	REV A