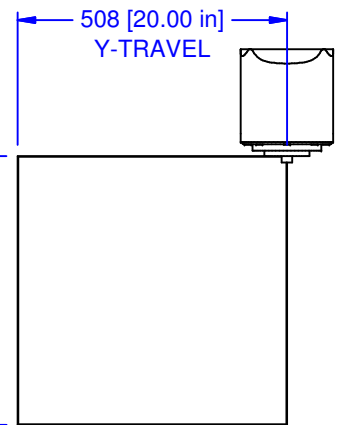
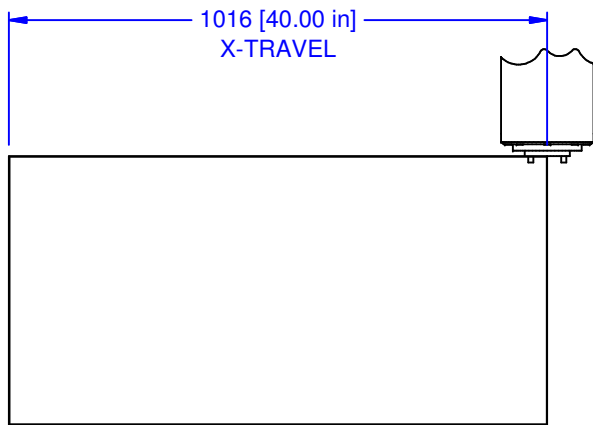


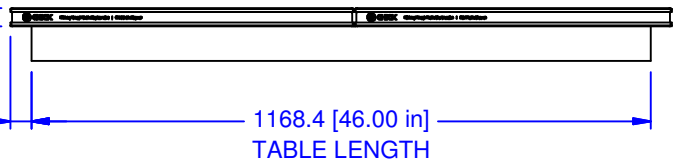
APPROVED:
DATE:

CHICK REQUIRES CUSTOMER SIGN-OFF APPROVAL FOR PROCESSING; MAY NOT BE CANCELLED OR RETURNED. DELIVERY IS AFTER RECEIPT OF SIGNED DRAWING.

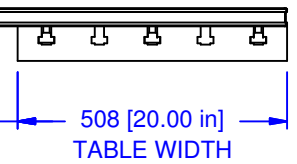


35 [1.38 in]
FOUNDATION THICKNESS

39.8 [1.57 in]
OVERHANG
TYP BOTH SIDES



101.6 [4.00 in]
OVERHANG



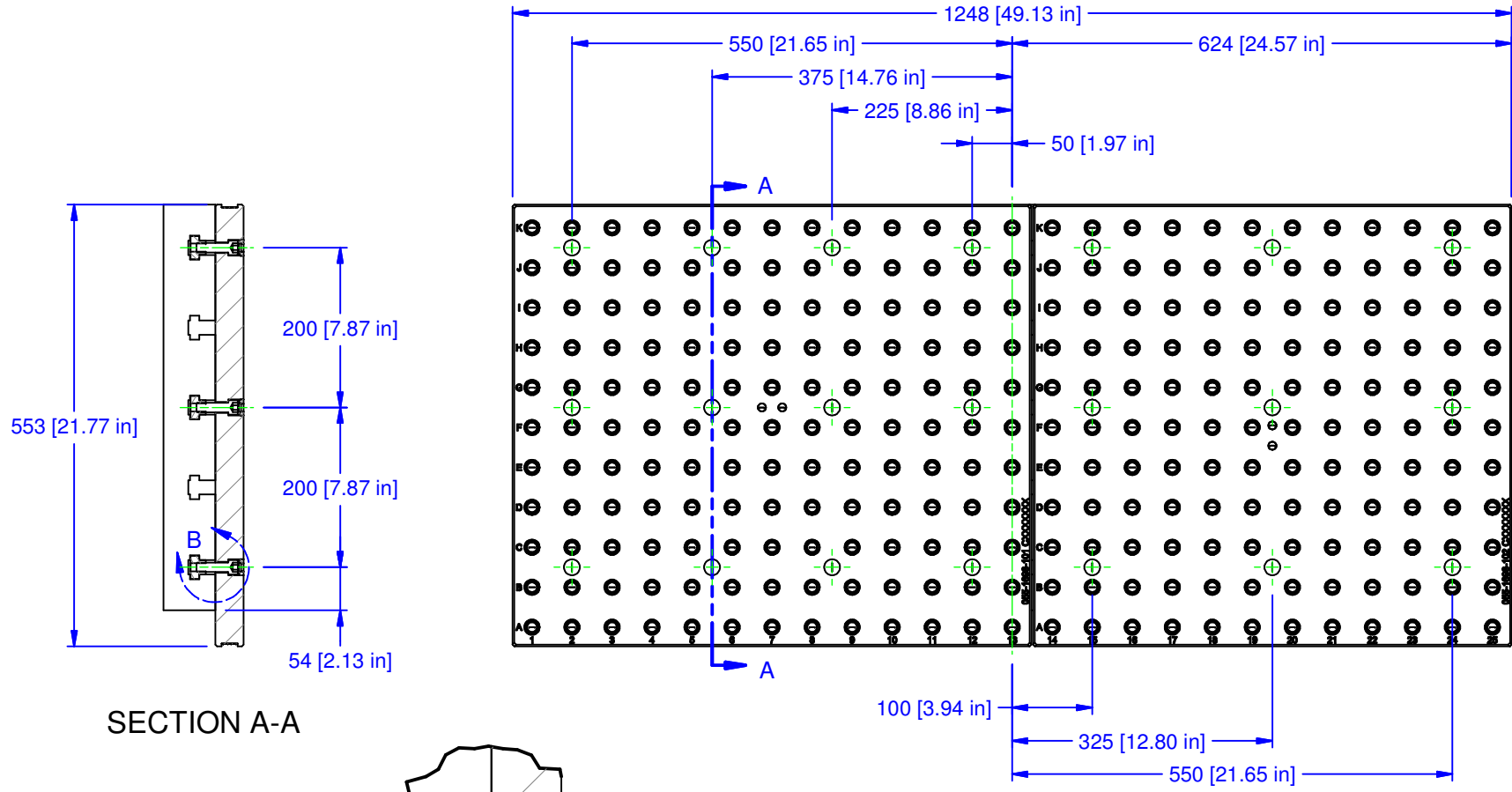
WORK ENVELOPE

CHICK (800) 332-4425
(724) 772-1644
www.ChickWorkholding.com

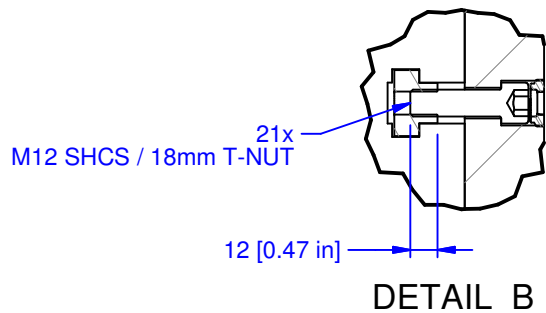
WORK PKG - VMC
HURCO VM20i
FOUNDATION ONLY
1248 X 553

TDD	1 OF 2	5VP-HURC-00081 V	REV A
8/28/2013			

VERIFICATION DRAWING



SECTION A-A



NOTES:

EACH HOLE IN THE GRID PATTERN IS BUSHED WITH A Ø12 (ID) x 12 LONG BUSHING AND TAPPED WITH AN M12x1.75 THREAD

INSTALLED IN EACH HOLE IS A REMOVABLE PLUG

FOUNDATIONS ARE MADE FROM CAST IRON

APPROVED:
DATE:
 CHICK REQUIRES CUSTOMER SIGN-OFF APPROVAL FOR PROCESSING; MAY NOT BE CANCELLED OR RETURNED. DELIVERY IS AFTER RECEIPT OF SIGNED DRAWING.

TABLE INTERFACE

CHICK (800) 332-4425
 (724) 772-1644
 www.ChickWorkholding.com

WORK PKG - VMC
 HURCO VM20i
 FOUNDATION ONLY
 1248 X 553

TDD	2 OF 2	5VP-HURC-00081 V	REV A
8/28/2013			

VERIFICATION DRAWING