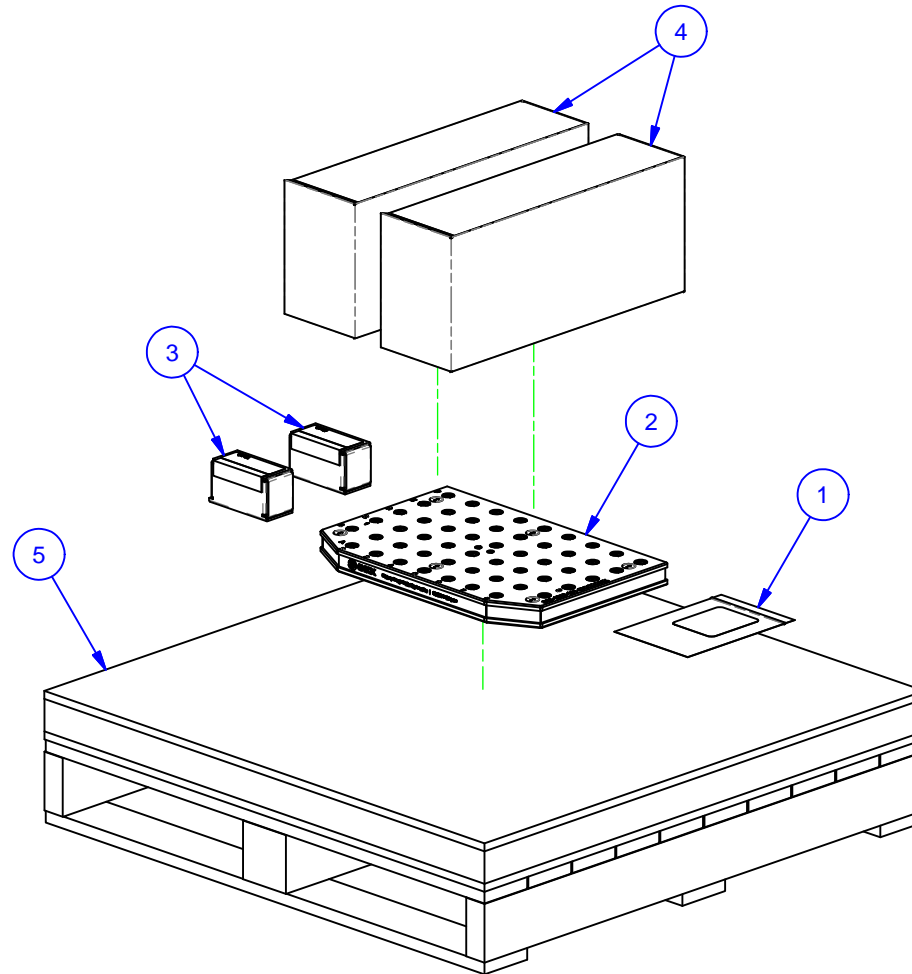


PARTS LIST						
No	QTY	PN	ITEM	TYPE	FAM	STYLE
1	1	050-2-10124	KIT	FOUNDATION MOUNTING	M12 TAPPED HOLE	(6) M12 X 30 SHCS
2	1	055-1358-01	FOUNDATION ASSY	WP STANDARD	KITAMURA Mycenter 0 APC	460 X 305
3	2	058-9-10001	MPIN12S	ROUND & DIAMOND PIN SET	SYSTEM 5 & M SYSTEM	12mm DIA. x 19mm LONG
4	2	106-9-10001	5QL1030-AL	ALUMINUM QWIK-LOK	5-1030	SHIPPING GROUP
5	1	990-50-021	PACKAGING	SHIPPING CRATE	FOUNDATIONS	36" X 36"

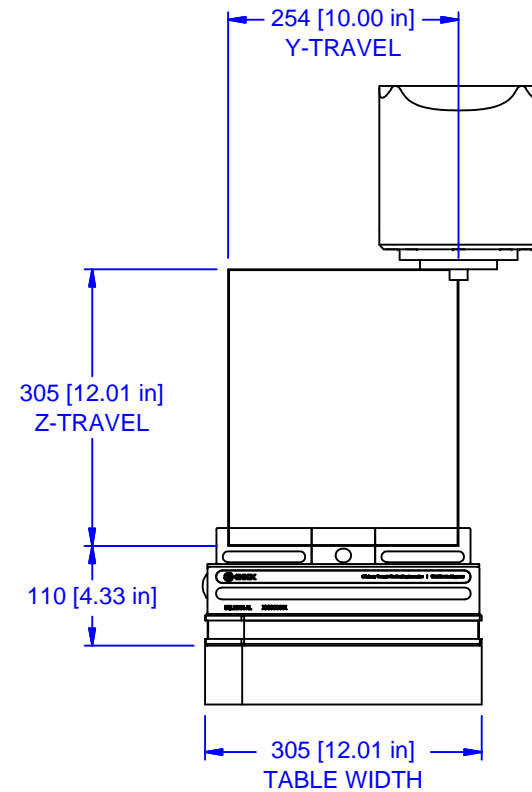
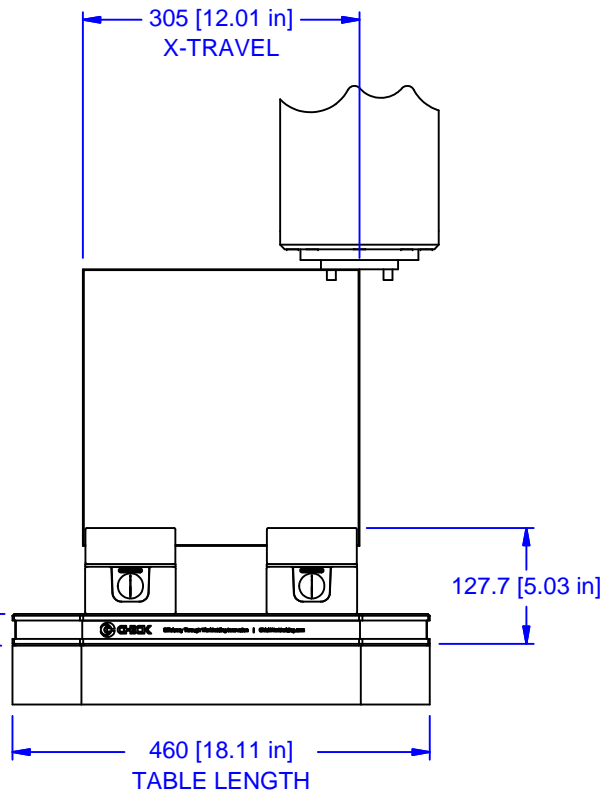
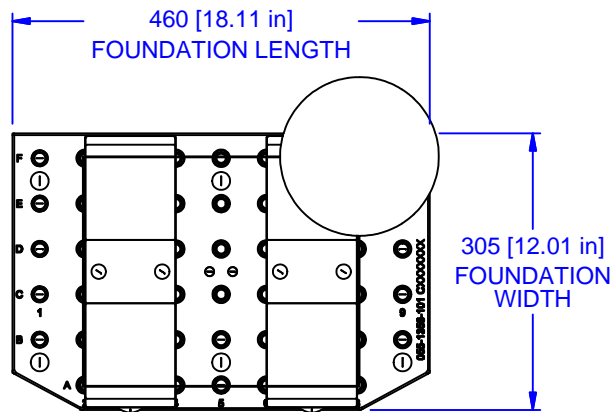


MATERIAL: NA
HARDNESS: NA
COATING: NA
WEIGHT: N/A
COMMENTS: UP TO (3) QWIK-LOKS MAY BE USED

UNSPECIFIED TOLERANCES:	
X	±0.2
X.X	±0.1
X.XX	±0.05
ANGLES	±0.5°
ALL DIMENSIONS ARE MILLIMETERS.	

 (800) 332-4425
 (724) 772-1644
www.ChickWorkholding.com
 UNSPECIFIED EDGES: BREAK 0.3 TO 0.8
 UNSPECIFIED FILLETS: RADIUS 0.3 MAX

ITEM: WORK PKG - VMC	
TYPE: KITAMURA Mycenter 0 APC	
FAM: 5QL1030-AL (2)	
STYLE: 460 X 305	
TDD	1 OF 3
5/27/2009	5VP-KITA-00116
REV	A



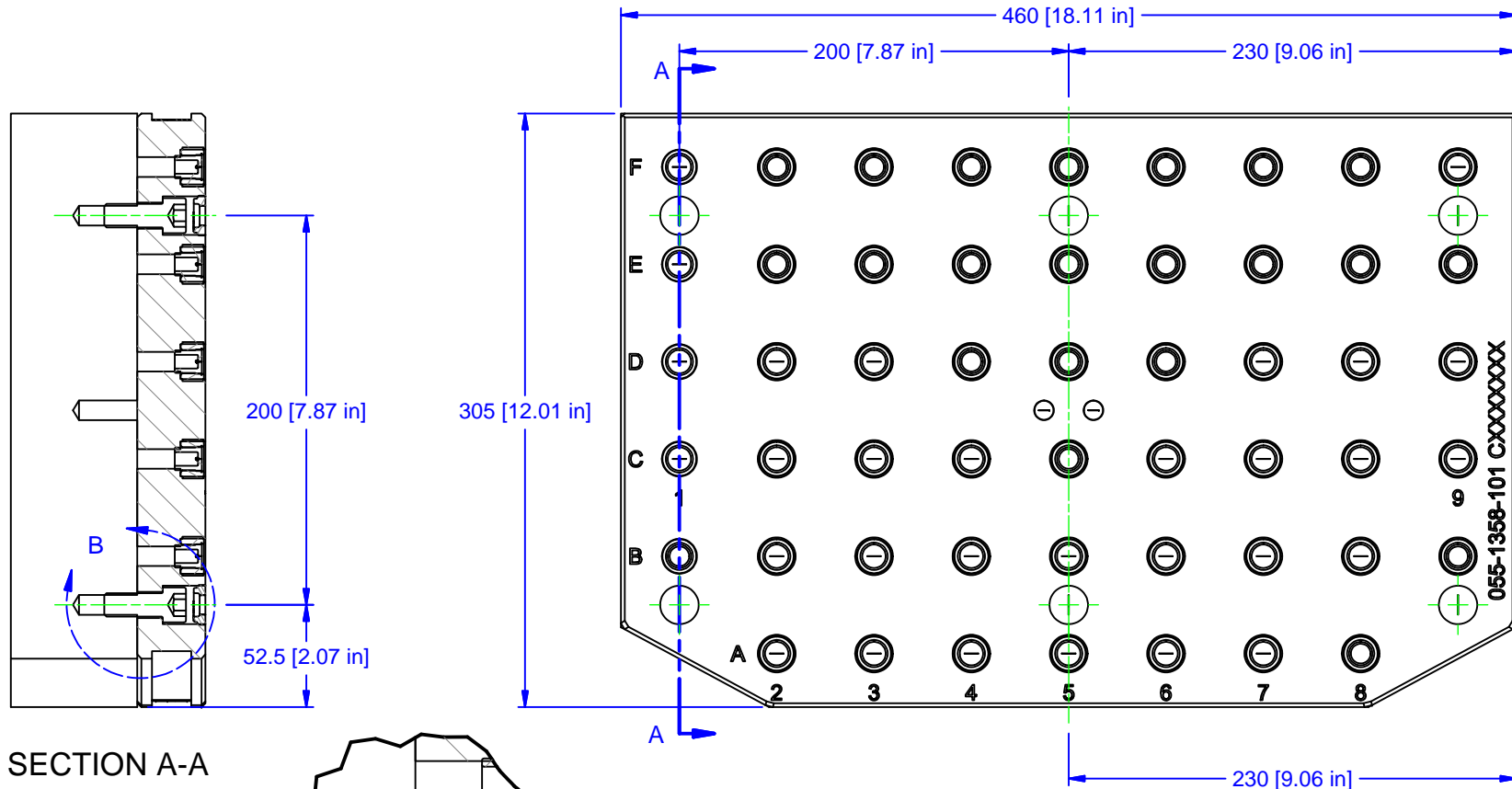
MATERIAL:	NA
HARDNESS:	NA
COATING:	NA
WEIGHT:	N/A
COMMENTS:	UP TO (3) QWIK-LOKS MAY BE USED

UNSPECIFIED TOLERANCES:	
X	±0.2
X.X	±0.1
X.XX	±0.05
ANGLES	±0.5°
ALL DIMENSIONS ARE MILLIMETERS.	

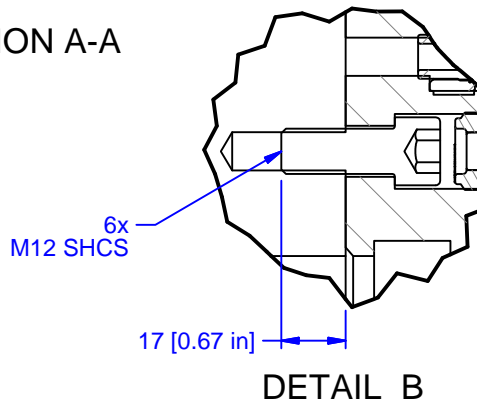

 (800) 332-4425
 (724) 772-1644
www.ChickWorkholding.com

UNSPECIFIED EDGES: BREAK 0.3 TO 0.8
 UNSPECIFIED FILLETS: RADIUS 0.3 MAX

ITEM: WORK PKG - VMC	
TYPE: KITAMURA Mycenter 0 APC	
FAM: 5QL1030-AL (2)	
STYLE: 460 X 305	
TDD	2 OF 3
5/27/2009	5VP-KITA-00116
REV	A



SECTION A-A



DETAIL B

MATERIAL: NA
HARDNESS: NA
COATING: NA
WEIGHT: N/A
COMMENTS: UP TO (3) QWIK-LOKS MAY BE USED

UNSPECIFIED TOLERANCES:

X	±0.2
X.X	±0.1
X.XX	±0.05
ANGLES	±0.5°

ALL DIMENSIONS ARE MILLIMETERS.

CHICK (800) 332-4425
 (724) 772-1644
www.ChickWorkholding.com

UNSPECIFIED EDGES: BREAK 0.3 TO 0.8
 UNSPECIFIED FILLETS: RADIUS 0.3 MAX

ITEM: WORK PKG - VMC		
TYPE: KITAMURA Mycenter 0 APC		
FAM: 5QL1030-AL (2)		
STYLE: 460 X 305		
TDD 3 OF 3	5VP-KITA-00116	REV A
5/27/2009		