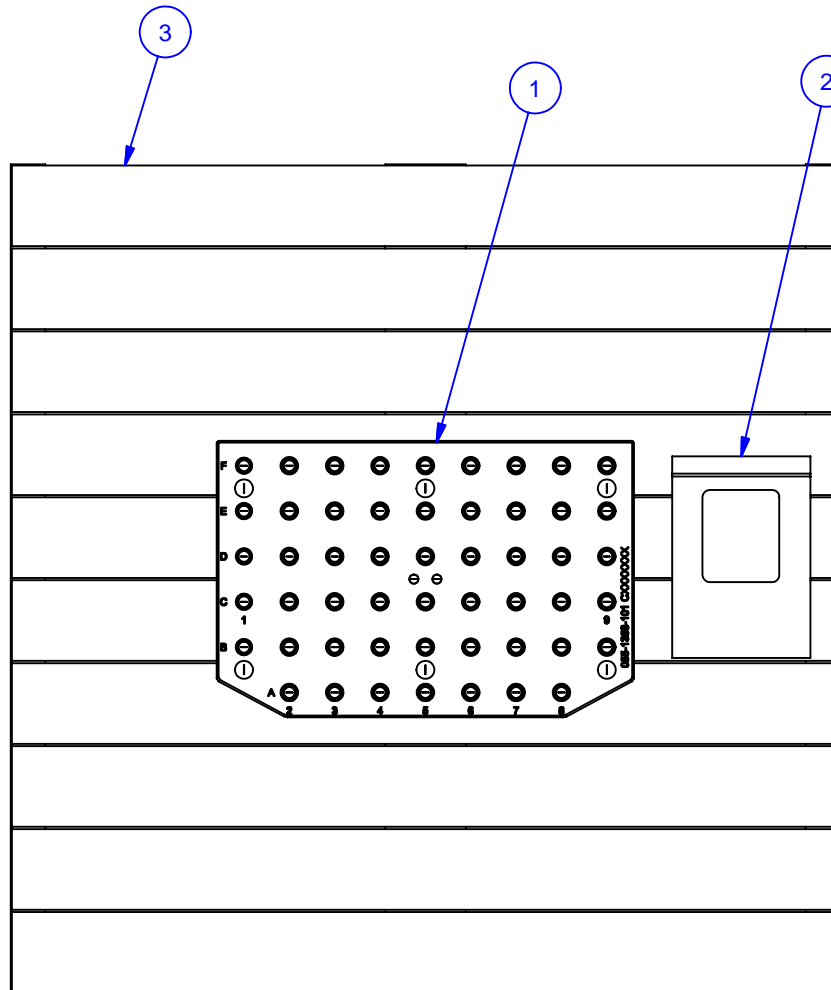

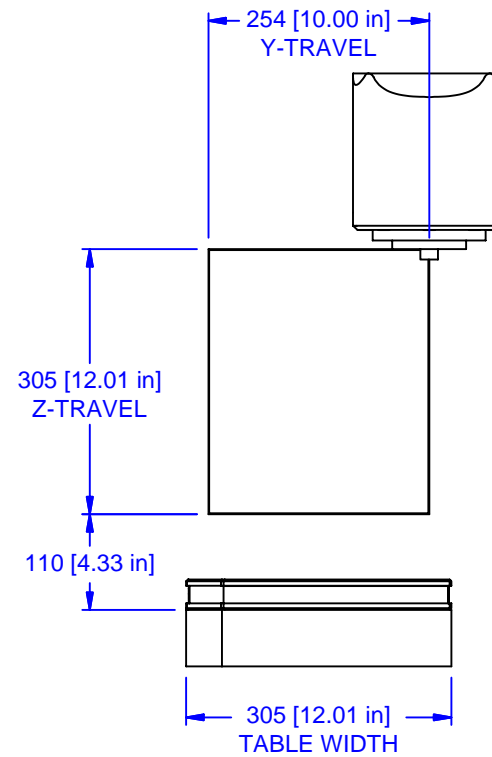
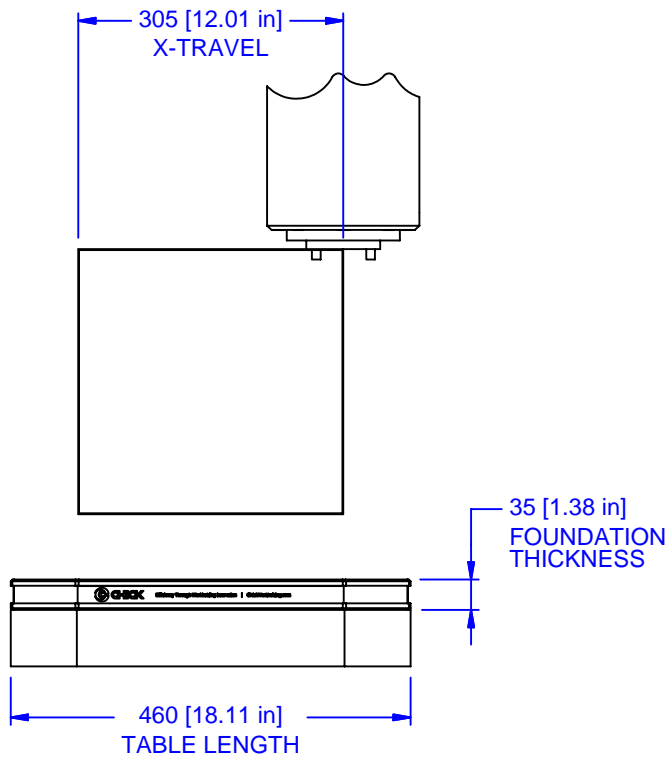
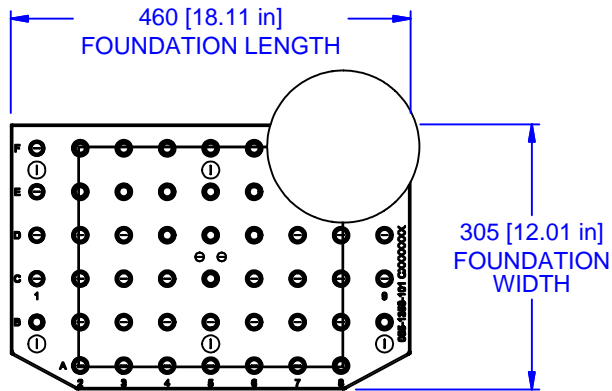


PARTS LIST						
No	QTY	PN	ITEM	TYPE	FAM	STYLE
1	1	055-1358-01	FOUNDATION ASSY	WP STANDARD	KITAMURA Mycenter 0 APC	460 X 305
2	1	050-2-10124	KIT	FOUNDATION MOUNTING	M12 TAPPED HOLE	(6) M12 X 30 SHCS
3	1	990-50-001	PACKAGING	WOOD SHIPPING PALLET	36" SQUARE	NA



MATERIAL: <b>NA</b>	UNSPECIFIED TOLERANCES: X ±0.2 X.X ±0.1 X.XX ±0.05 ANGLES ±0.5° ALL DIMENSIONS ARE MILLIMETERS.	 (800) 332-4425 (724) 772-1644 <a href="http://www.ChickWorkholding.com">www.ChickWorkholding.com</a>	ITEM: <b>WORK PKG - VMC</b>	REV
HARDNESS: <b>NA</b>			TYPE: <b>KITAMURA Mycenter 0 APC</b>	
COATING: <b>NA</b>			FAM: <b>FOUNDATION</b>	3/14/2008
WEIGHT: <b>48172 g</b>			STYLE: <b>460 X 305</b>	
COMMENTS:			UNSPECIFIED EDGES: BREAK 0.3 TO 0.8	UNSPECIFIED FILLETS: RADIUS 0.3 MAX



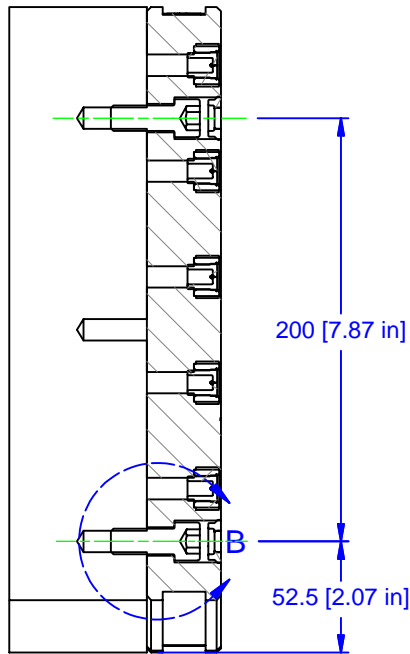
MATERIAL: NA
HARDNESS: NA
COATING: NA
WEIGHT: 48172 g
COMMENTS:

UNSPECIFIED TOLERANCES:  
 X ±0.2  
 X.X ±0.1  
 X.XX ±0.05  
 ANGLES ±0.5°  
 ALL DIMENSIONS ARE MILLIMETERS.

**CHICK** (800) 332-4425  
 (724) 772-1644  
[www.ChickWorkholding.com](http://www.ChickWorkholding.com)

UNSPECIFIED EDGES: BREAK 0.3 TO 0.8  
 UNSPECIFIED FILLETS: RADIUS 0.3 MAX

ITEM: WORK PKG - VMC	REV
TYPE: KITAMURA Mycenter 0 APC	A
FAM: FOUNDATION	
STYLE: 460 X 305	
BCE 2 OF 3	5VP-KITA-00118
3/14/2008	

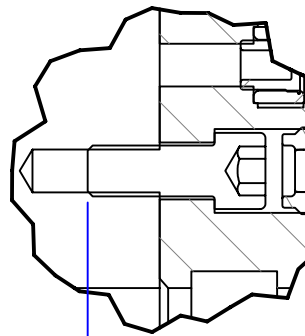


SECTION A-A

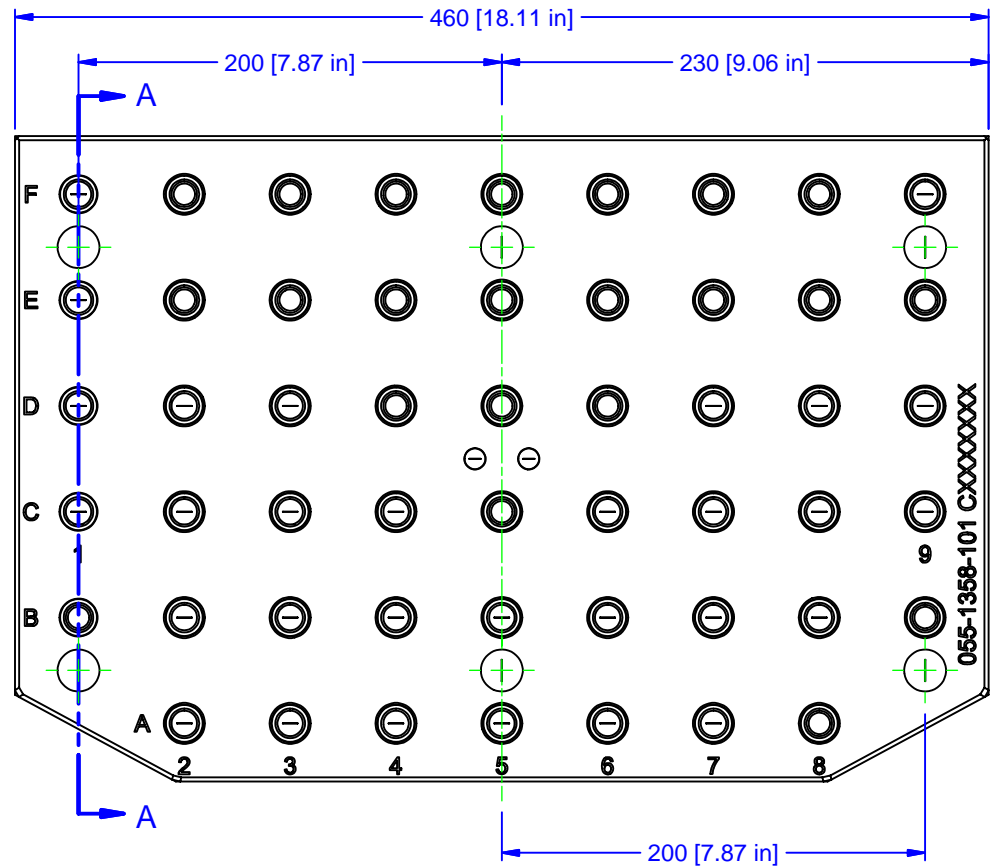
200 [7.87 in]

52.5 [2.07 in]

17 [0.67 in]



DETAIL B



MATERIAL: NA
HARDNESS: NA
COATING: NA
WEIGHT: 48172 g
COMMENTS:

UNSPECIFIED TOLERANCES:  
 X ±0.2  
 X.X ±0.1  
 X.XX ±0.05  
 ANGLES ±0.5°  
 ALL DIMENSIONS ARE MILLIMETERS.

**CHICK** (800) 332-4425  
 (724) 772-1644  
[www.ChickWorkholding.com](http://www.ChickWorkholding.com)

UNSPECIFIED EDGES: BREAK 0.3 TO 0.8  
 UNSPECIFIED FILLETS: RADIUS 0.3 MAX

ITEM: WORK PKG - VMC
TYPE: KITAMURA Mycenter 0 APC
FAM: FOUNDATION
STYLE: 460 X 305
BCE 3 OF 3
3/14/2008
5VP-KITA-00118
REV A