

5VP-MATS-00108

This workholding package is designed for your MATSUURA ES-550V-PC2 (Inch Table) machining center.

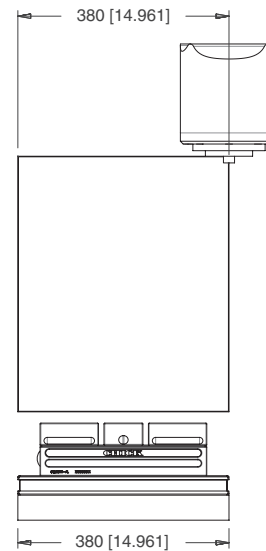
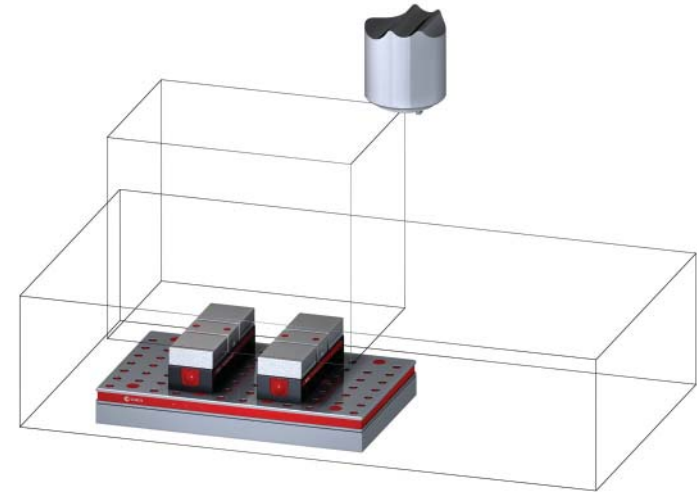
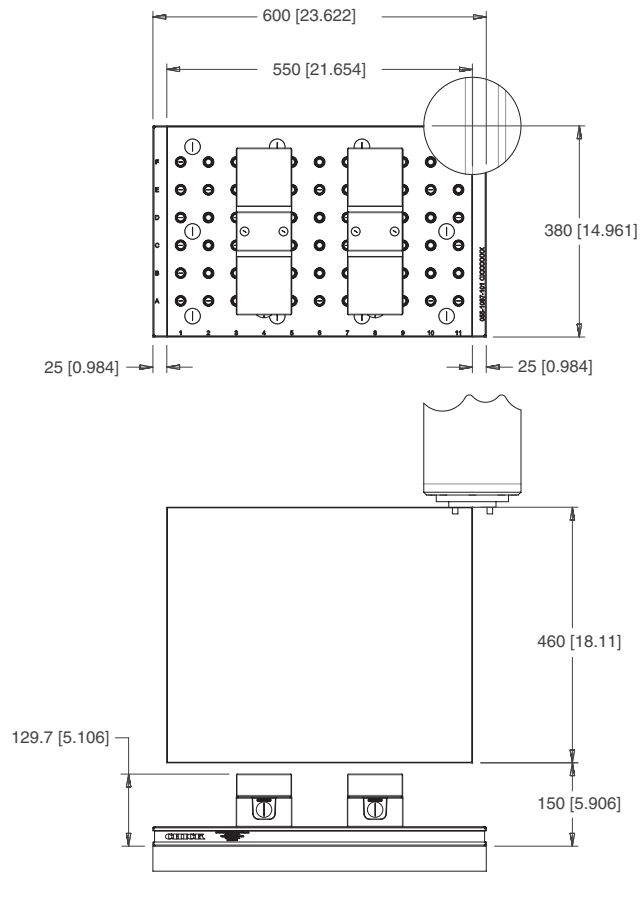


Notes

CHICK WORKHOLDING SOLUTIONS, INC
500 Keystone Drive • Warrendale, PA 15086 USA
Phone: (724) 772-1644 • Fax: (724) 772-1633
Toll Free: (800) 33-CHICK • (800) 332-4425
www.ChickWorkholding.com

5VP-MATS-00108

This workholding package is designed for your MATSUURA ES-550V-PC2 (Inch Table) machining center.



Notes

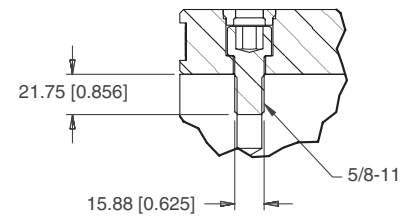
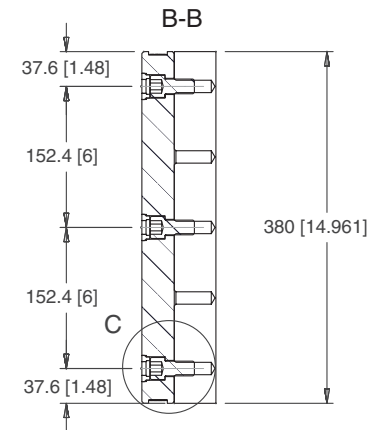
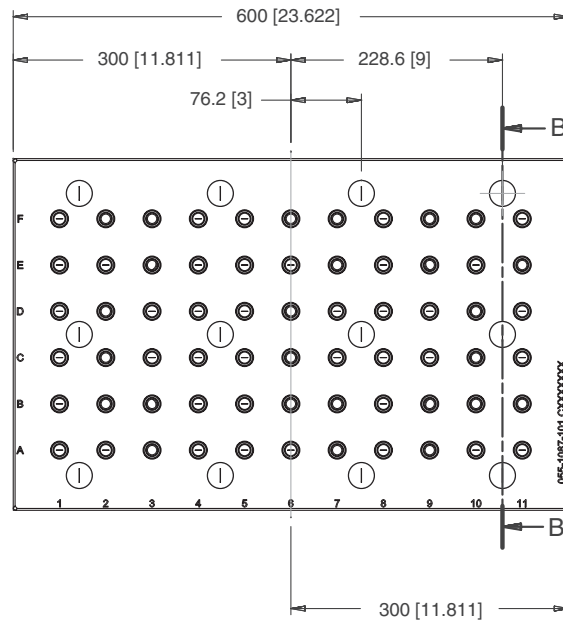
Machine travel may be limited by mechanical interference and/or machine safety zones. Please consult your machine's operating instructions for more information.

All dimensions are MM [IN]

CHICK WORKHOLDING SOLUTIONS, INC
 500 Keystone Drive • Warrendale, PA 15086 USA
 Phone: (724) 772-1644 • Fax: (724) 772-1633
 Toll Free: (800) 33-CHICK • (800) 332-4425
www.ChickWorkholding.com

5VP-MATS-00108

This workholding package is designed for your MATSUURA ES-550V-PC2 (Inch Table) machining center.



Notes
All dimensions are MM [IN]

CHICK WORKHOLDING SOLUTIONS, INC
500 Keystone Drive • Warrendale, PA 15086 USA
Phone: (724) 772-1644 • Fax: (724) 772-1633
Toll Free: (800) 33-CHICK • (800) 332-4425
www.ChickWorkholding.com

5VP-MATS-00108

This workholding package is designed for your MATSUURA ES-550V-PC2 (Inch Table) machining center.

FOUNDATION LENGTH, DEPTH, AND MOUNTING HOLE CONFIGURATION DESIGNED ACCORDING TO MACHINE TOOL SPECIFICATION



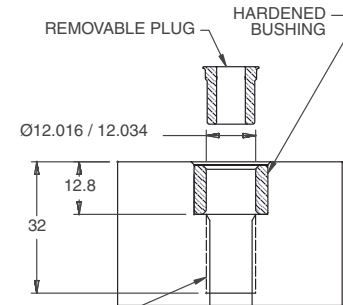
FOUNDATION MAT'L: CAST IRON
FOUNDATION INCLUDES INSTALLATION HARDWARE

DETAIL A



HOLE SPACING TOLERANCE
±0.02 TO 500mm
±0.03 TO 1200mm

SECTION B-B



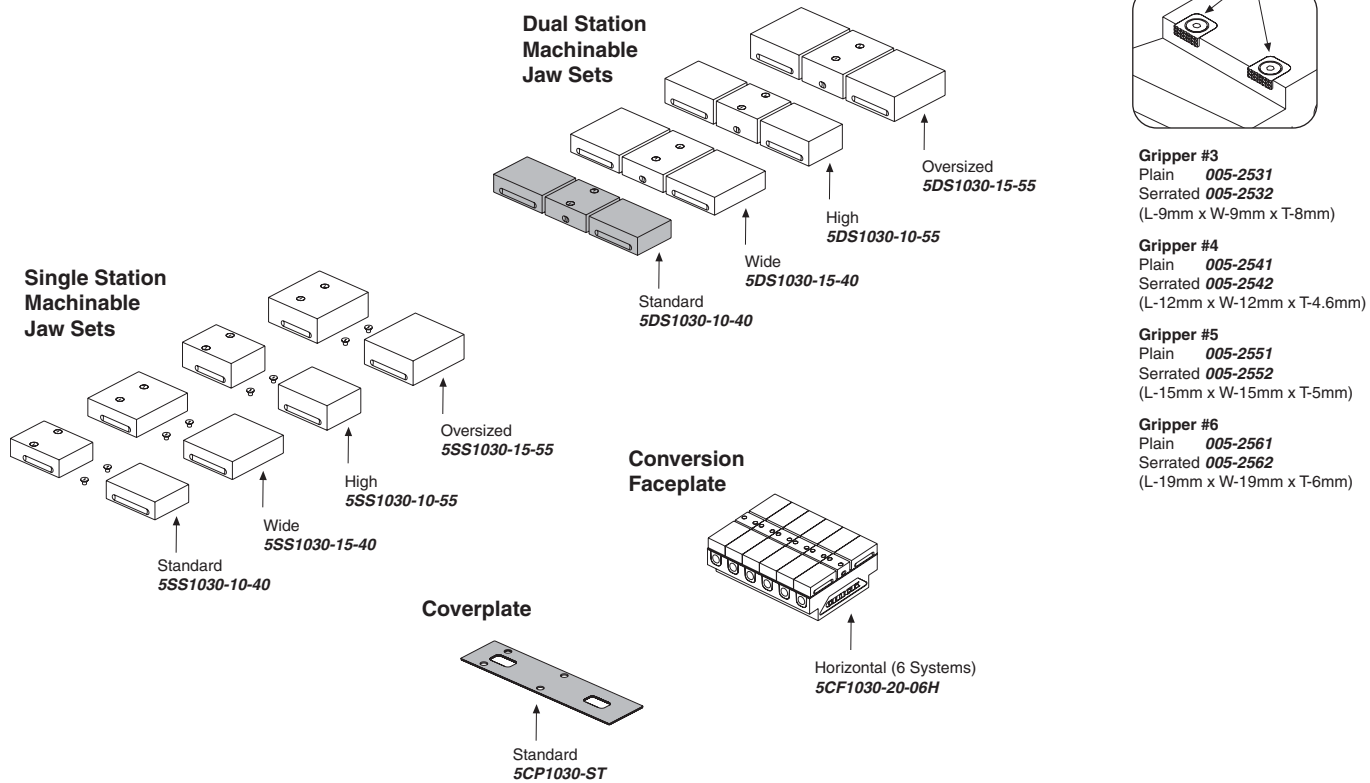
M12x1.75 TAP TO DEPTH SHOWN

Notes
All dimensions are MM [IN]

CHICK WORKHOLDING SOLUTIONS, INC
500 Keystone Drive • Warrendale, PA 15086 USA
Phone: (724) 772-1644 • Fax: (724) 772-1633
Toll Free: (800) 33-CHICK • (800) 332-4425
www.ChickWorkholding.com

Batch Production

Machinable accessories are the optimal solution for batch production. They offer QwikChange™ and accurate repeat set ups to optimize the productivity of the machine center.



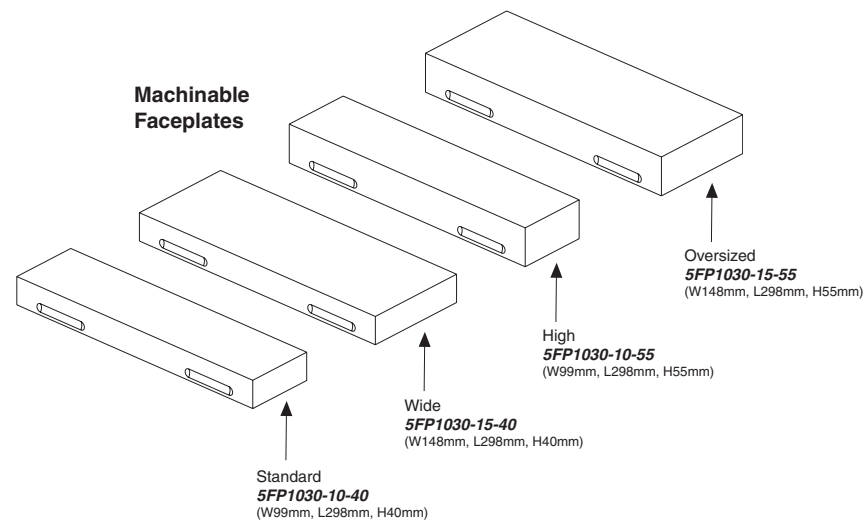
Notes

Grey item is included with a standard system

CHICK WORKHOLDING SOLUTIONS, INC
 500 Keystone Drive • Warrendale, PA 15086 USA
 Phone: (724) 772-1644 • Fax: (724) 772-1633
 Toll Free: (800) 33-CHICK • (800) 332-4425
www.ChickWorkholding.com

Dedicated Fixturing

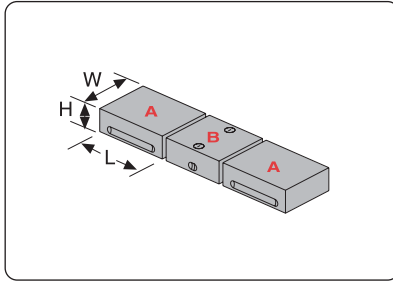
Machinable Faceplates provide QwikChange™ dedicated fixturing and are optimal for awkward or hard to hold parts. A mini pallet changer can be created by utilizing two Faceplates in tandem.



Notes

CHICK WORKHOLDING SOLUTIONS, INC
 500 Keystone Drive • Warrendale, PA 15086 USA
 Phone: (724) 772-1644 • Fax: (724) 772-1633
 Toll Free: (800) 33-CHICK • (800) 332-4425
www.ChickWorkholding.com

QwikChange Machinable Dual Station Jaws



Individual Dual Station Jaws

Standard

- A** Moveable Jaw **5MJ1030-10-40**
(W99mm, H40mm, L105mm)
- B** Fixed Jaw **5FJ1030-10-40**
(W99mm, H40mm, L70mm)

Wide

- A** Moveable Jaw **5MJ1030-15-40**
(W148mm, H40mm, L105mm)
- B** Fixed Jaw **5FJ1030-15-40**
(W148mm, H40mm, L70mm)

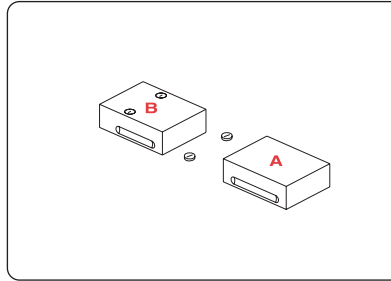
High

- A** Moveable Jaw **5MJ1030-10-55**
(W99mm, H55mm, L105mm)
- B** Fixed Jaw **5FJ1030-10-55**
(W99mm, H55mm, L70mm)

Oversized

- A** Moveable Jaw **5MJ1030-15-55**
(W148mm, H55mm, L105mm)
- B** Fixed Jaw **5FJ1030-15-55**
(W148mm, H55mm, L70mm)

QwikChange Machinable Single Station Jaws



Individual Single Station Jaws

Standard

- A** Moveable Jaw **5MJ1030-10-40**
(W99mm, H40mm, L105mm)
- B** Fixed Jaw **5SJ1030-10-40**
(W99mm, H40mm, L105mm)

Wide

- A** Moveable Jaw **5MJ1030-15-40**
(W148mm, H40mm, L105mm)
- B** Fixed Jaw **5SJ1030-15-40**
(W148mm, H40mm, L105mm)

High

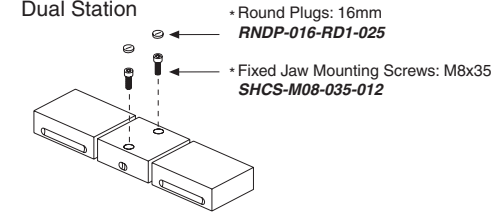
- A** Moveable Jaw **5MJ1030-10-55**
(W99mm, H55mm, L105mm)
- B** Fixed Jaw **5SJ1030-10-55**
(W99mm, H55mm, L105mm)

Oversized

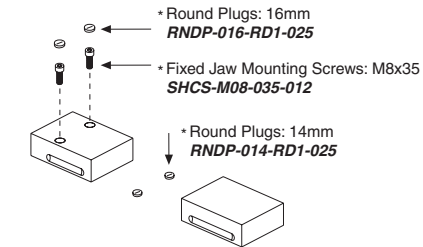
- A** Moveable Jaw **5MJ1030-15-55**
(W148mm, H55mm, L105mm)
- B** Fixed Jaw **5SJ1030-15-55**
(W148mm, H55mm, L105mm)

Screws and Plugs

Dual Station

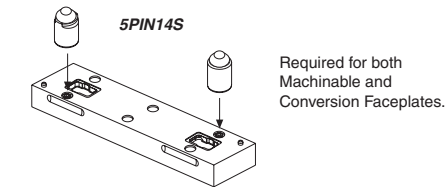


Single Station



Faceplate Round & Diamond Pin Set

(Included w/ Faceplate purchase)

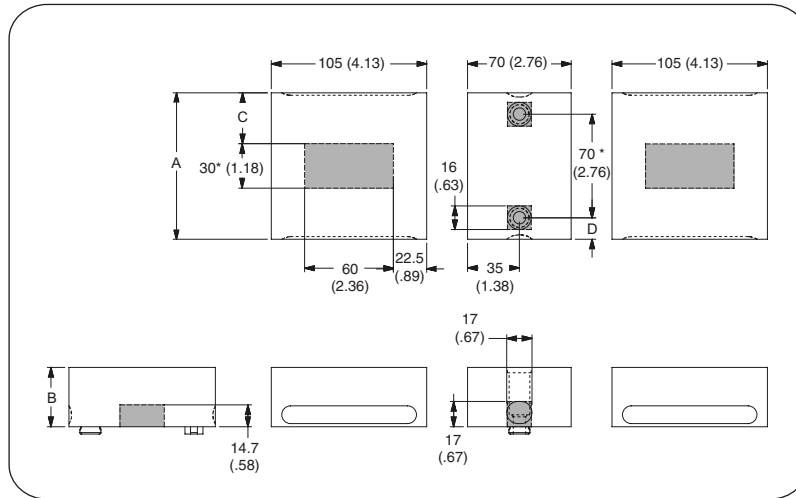


Notes

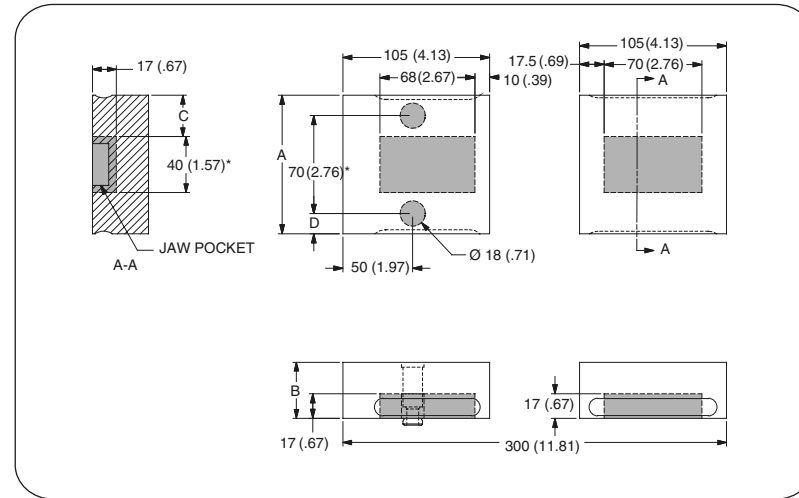
Grey or * item is included with a standard system

CHICK WORKHOLDING SOLUTIONS, INC
500 Keystone Drive • Warrendale, PA 15086 USA
Phone: (724) 772-1644 • Fax: (724) 772-1633
Toll Free: (800) 33-CHICK • (800) 332-4425
www.ChickWorkholding.com

Dual Station



Single Station



Item Number	Description	A	B	C	D
5DS1030-10-40	Standard	99 [3.90]	40 [1.57]	34.5 [1.36]	14.5 [.57]
5DS1030-10-55	High	99 [3.90]	55 [2.17]	34.5 [1.36]	14.5 [.57]
5DS1030-15-40	Wide	148 [5.83]	40 [1.57]	59 [2.32]	39 [1.54]
5DS1030-15-55	Oversized	148 [5.83]	55 [2.17]	59 [2.32]	39 [1.54]

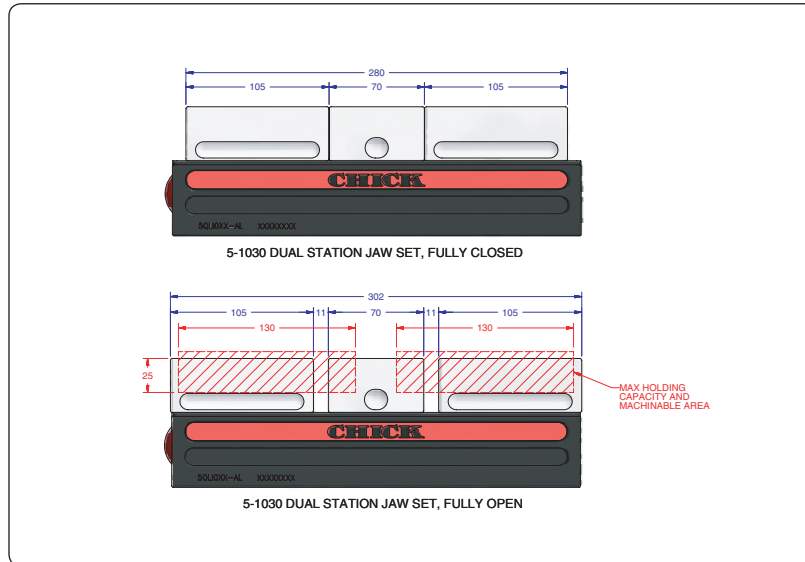
Item Number	Description	A	B	C	D
5SS1030-10-40	Standard	99 [3.90]	40 [1.57]	29.5 [1.16]	14.5 [.57]
5SS1030-10-55	High	99 [3.90]	55 [2.17]	29.5 [1.16]	14.5 [.57]
5SS1030-15-40	Wide	148 [5.83]	40 [1.57]	54 [2.13]	39 [1.54]
5SS1030-15-55	Oversized	148 [5.83]	55 [2.17]	54 [2.13]	39 [1.54]

Notes

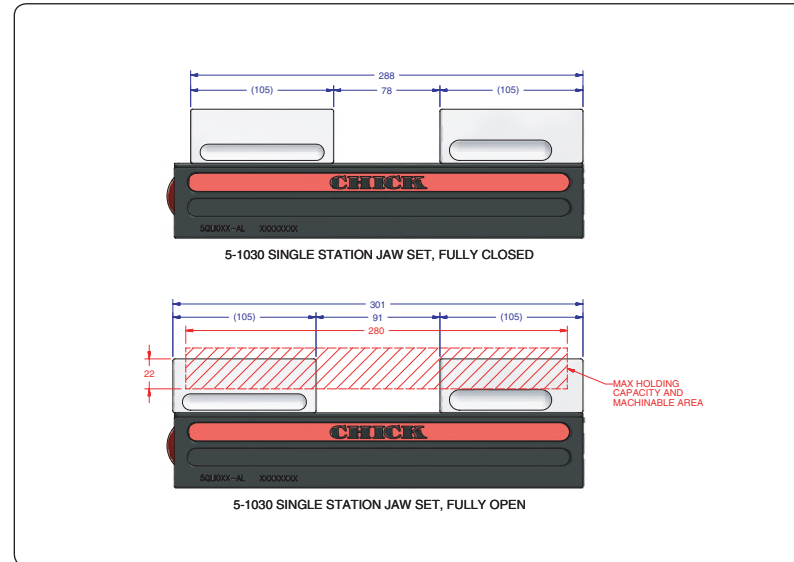
Grey area indicates no cut zone
 All dimensions are MM [IN]
 Dimensions centered on the "A" dimension.

CHICK WORKHOLDING SOLUTIONS, INC
 500 Keystone Drive • Warrendale, PA 15086 USA
 Phone: (724) 772-1644 • Fax: (724) 772-1633
 Toll Free: (800) 33-CHICK • (800) 332-4425
www.ChickWorkholding.com

Dual Station



Single Station



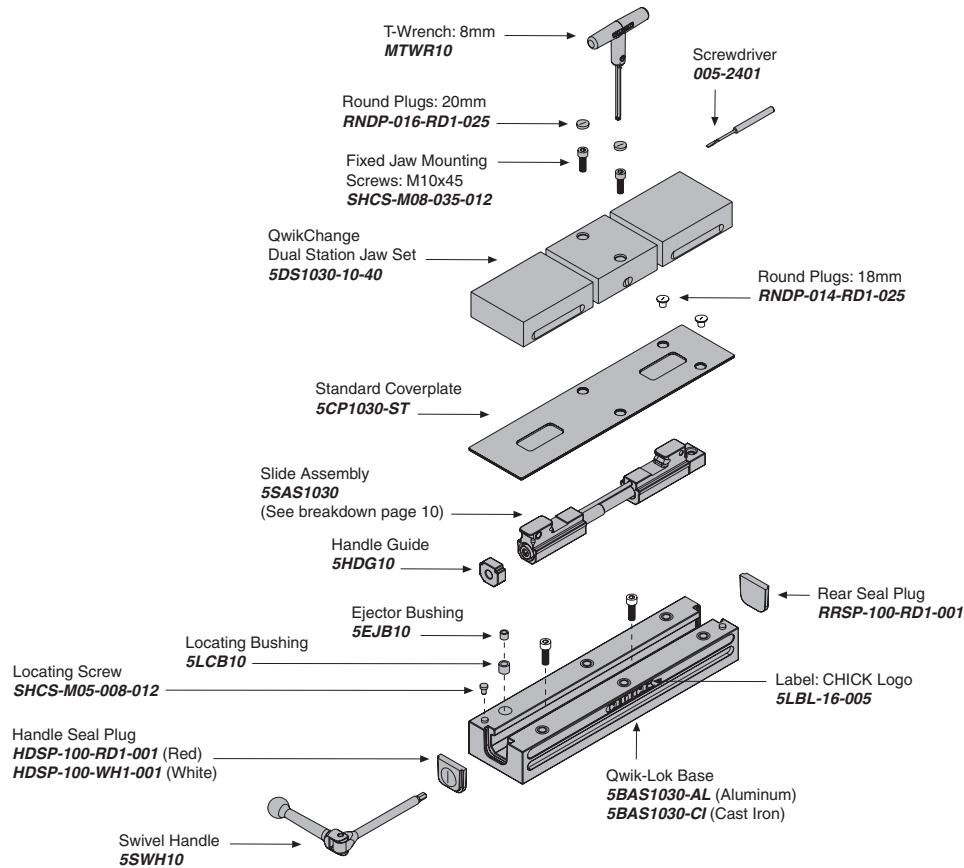
Item Number	Description	A	Jaw Width
5DS1030-10-40	Standard	26 [1.02]	99 [3.90]
5DS1030-10-55	High	41 [1.61]	99 [3.90]
5DS1030-15-40	Wide	26 [1.02]	148 [5.83]
5DS1030-15-55	Oversized	41 [1.61]	148 [5.83]

Item Number	Description	A	Jaw Width
5SS1030-10-40	Standard	26 [1.02]	99 [3.90]
5SS1030-10-55	High	41 [1.61]	99 [3.90]
5SS1030-15-40	Wide	26 [1.02]	148 [5.83]
5SS1030-15-55	Oversized	41 [1.61]	148 [5.83]

Notes

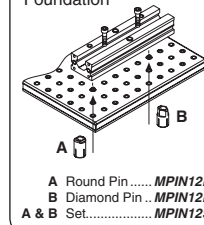
All dimensions are MM [IN]
 Additional closure is available with an Extended Travel Coverplate.
 Contact CHICK for details.

CHICK WORKHOLDING SOLUTIONS, INC
 500 Keystone Drive • Warrendale, PA 15086 USA
 Phone: (724) 772-1644 • Fax: (724) 772-1633
 Toll Free: (800) 33-CHICK • (800) 332-4425
www.ChickWorkholding.com

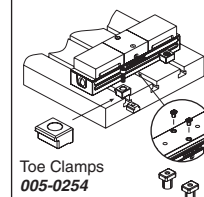


MOUNTING

Foundation

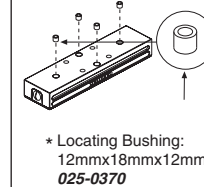


T-Slotted Table



Bolt and T-Nut
supplied by customer

Bottom of Base



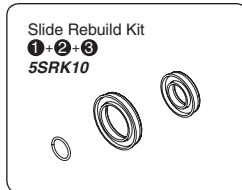
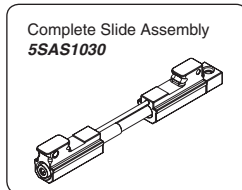
Locating Keys

Inch Size
MKE500 (1/2")
MKE562 (9/16")
MKE625 (5/8")
MKE688 (11/16")
MKE750 (3/4")
MKE812 (13/16")
Metric Size
MKE10 (10mm)
MKE12 (12mm)
MKE14X18 (14mm)
MKE16 (16mm)
MKE20 (20mm)

Notes

Grey items are included with a standard system
 For QwikChange™ Jaw accessories, see pages 4-7

CHICK WORKHOLDING SOLUTIONS, INC
 500 Keystone Drive • Warrendale, PA 15086 USA
 Phone: (724) 772-1644 • Fax: (724) 772-1633
 Toll Free: (800) 33-CHICK • (800) 332-4425
 www.ChickWorkholding.com



Notes

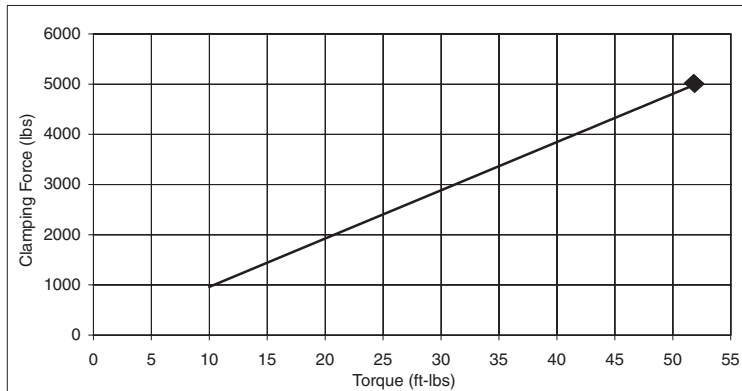
Grey items are included with a standard system

CHICK WORKHOLDING SOLUTIONS, INC
 500 Keystone Drive • Warrendale, PA 15086 USA
 Phone: (724) 772-1644 • Fax: (724) 772-1633
 Toll Free: (800) 33-CHICK • (800) 332-4425
www.ChickWorkholding.com

Pounds (lbs)

Force	=	Torque	X	Slope
lbs	=	in-lb	x	8.0
lbs	=	ft-lbs	x	96

Torque (ft-lb)	Force (lbs)
0	0
10	962
20	1923
30	2885
40	3846
50	4808
52	5000

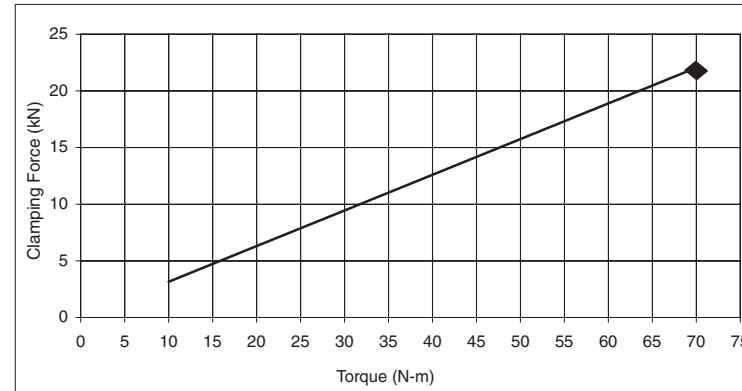


Note:  Maximum Recommended Torque. Actual results may vary.

Kilonewtons (kN)

Force	=	Torque	X	Slope
N	=	N-m	x	315
kN	=	N-m	x	0.315

Torque (N-m)	Force (kN)
0	0.0
10	3.1
20	6.3
30	9.4
40	12.6
50	15.7
60	18.9
65	20.5
70	22.0



Note:  Maximum Recommended Torque. Actual results may vary.

Notes

CHICK WORKHOLDING SOLUTIONS, INC
 500 Keystone Drive • Warrendale, PA 15086 USA
 Phone: (724) 772-1644 • Fax: (724) 772-1633
 Toll Free: (800) 33-CHICK • (800) 332-4425
www.ChickWorkholding.com