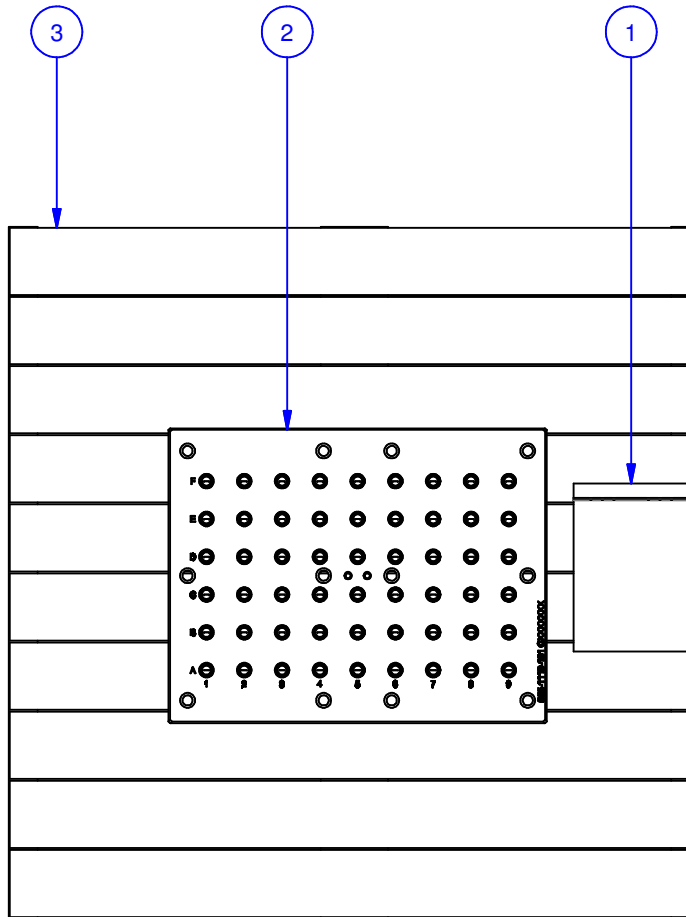
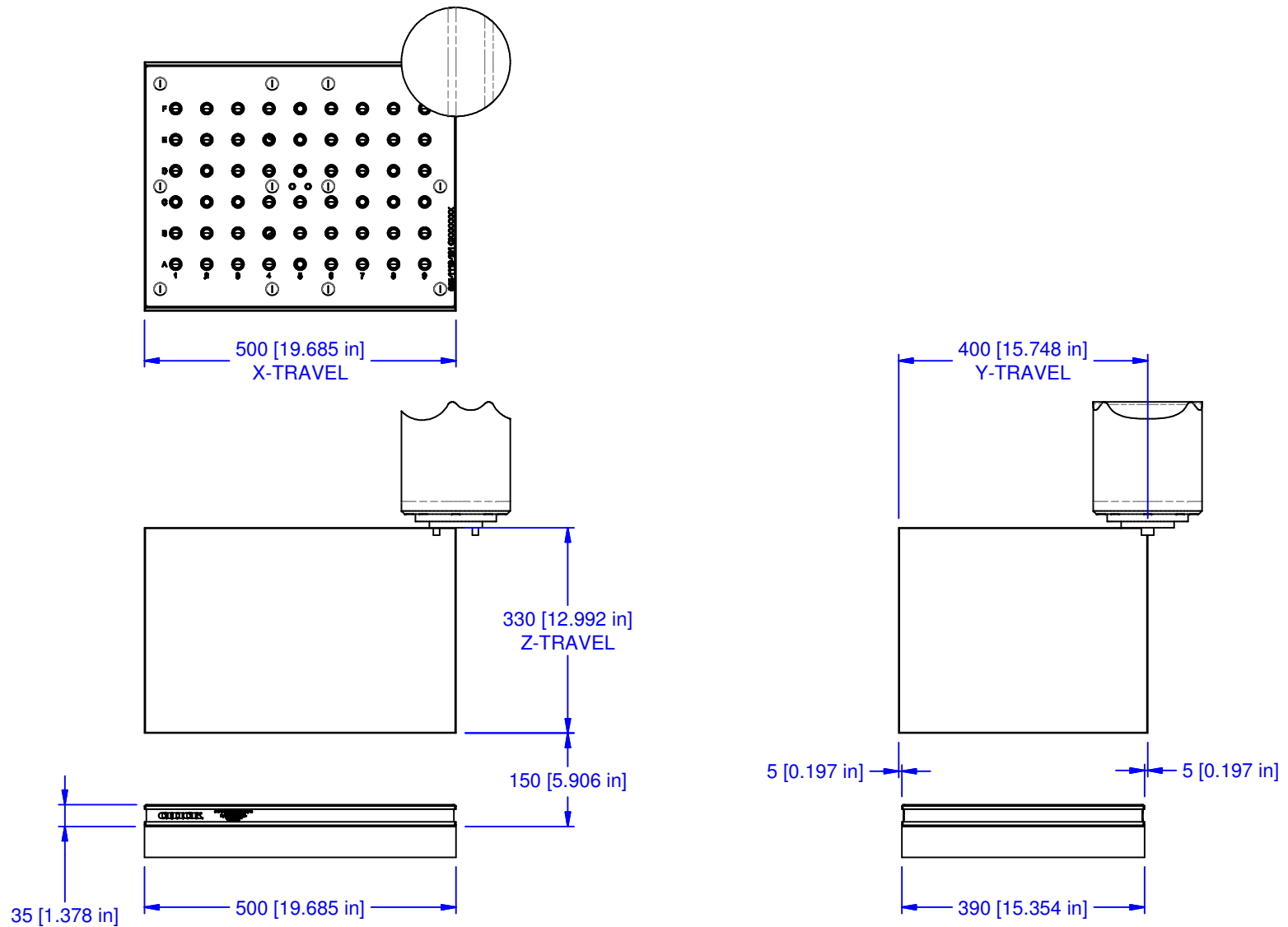


PARTS LIST						
No	QTY	PN	ITEM	TYPE	FAM	STYLE
1	1	050-2-10083	KIT	FOUNDATION MOUNTING	1/2-13 TAPPED HOLE	(12) 1/2-13 X 1.25" SHCS
2	1	055-1119-01	FOUNDATION ASSY	STANDARD GRID	ROBODRILL T-14iB / T-21iB PC2	500 X 390
3	1	990-50-001	PACKAGING	WOOD SHIPPING PALLET	36" SQUARE	NA



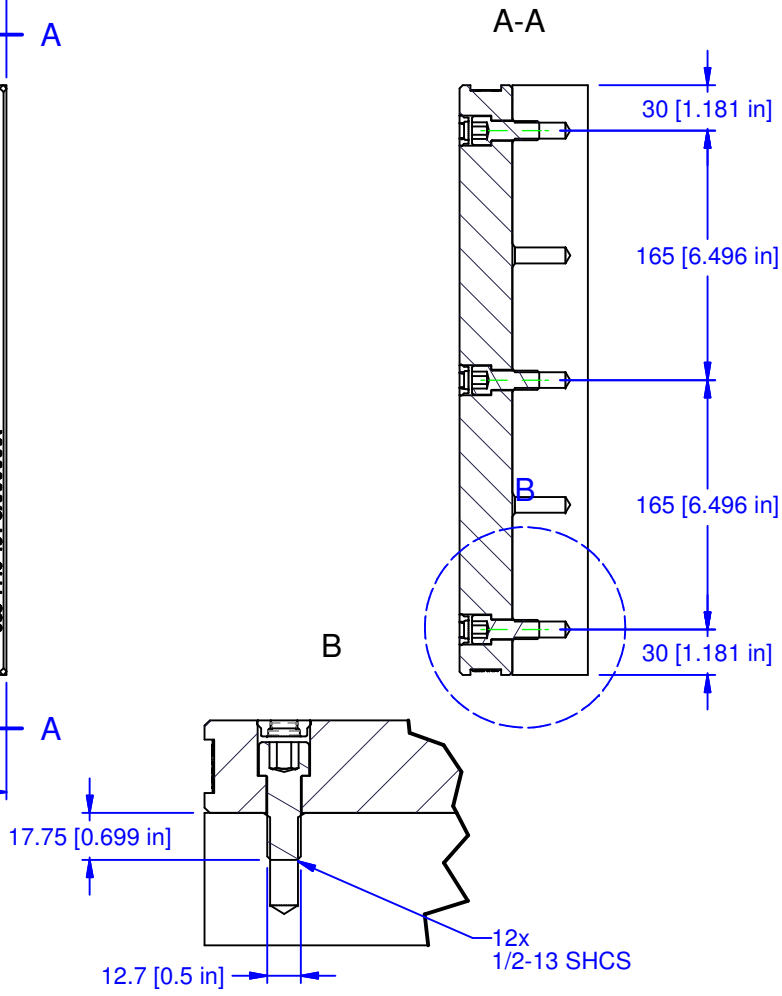
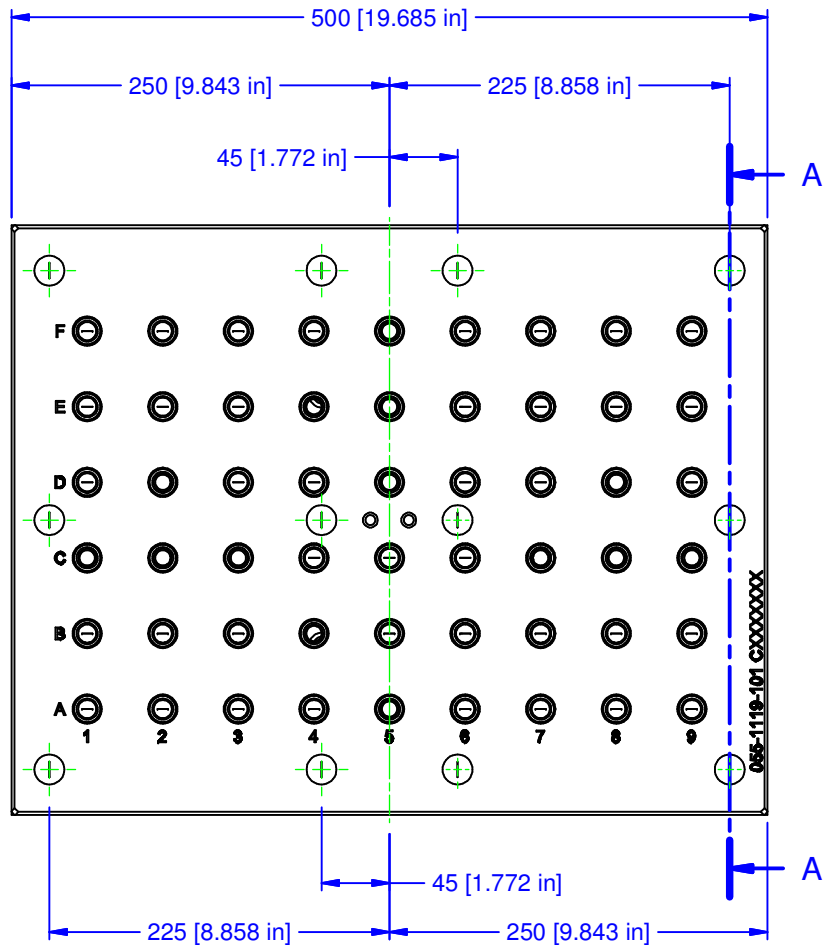
MATERIAL:	UNSPECIFIED TOLERANCES: X ±0.2 X.X ±0.1 X.XX ±0.05 ANGLES ±0.5° ALL DIMENSIONS ARE MILLIMETERS.	CHICK 500 Keystone Drive Warrendale, PA USA (800) 33-CHICK • (724) 772-1644 www.chick-workholding.com	ITEM: WORK PKG - VMC	TTK 1 OF 3 REV 10/31/2006 5VP-ROBO-00011 A1
HARDNESS: NA			TYPE: FANUC ROBODRILL T-21iB PC2	
COATING: NA			FAM: FOUNDATION ONLY	
WEIGHT: 53870 g			STYLE: 500 x 390	
COMMENTS:	UNSPECIFIED EDGES: BREAK 0.3 TO 0.8	UNSPECIFIED FILLETS: RADIUS 0.3 MAX		

Pending



MATERIAL:	UNSPECIFIED TOLERANCES: X ±0.2 X.X ±0.1 X.XX ±0.05 ANGLES ±0.5° ALL DIMENSIONS ARE MILLIMETERS.	CHICK 500 Keystone Drive Warrendale, PA USA (800) 33-CHICK • (724) 772-1644 www.chick-workholding.com	ITEM: WORK PKG - VMC				
HARDNESS: NA			TYPE: FANUC ROBOTDRILL T-21iB PC2				
COATING: NA			FAM: FOUNDATION ONLY				
WEIGHT: 53870 g			STYLE: 500 x 390				
COMMENTS:			<table border="1"> <tr> <td>TTK</td> <td>2 OF 3</td> <td rowspan="2">5VP-ROBO-00011</td> <td rowspan="2">REV A1</td> </tr> <tr> <td colspan="2">10/31/2006</td> </tr> </table>	TTK	2 OF 3	5VP-ROBO-00011	REV A1
TTK	2 OF 3	5VP-ROBO-00011	REV A1				
10/31/2006							
UNSPECIFIED EDGES: BREAK 0.3 TO 0.8							
UNSPECIFIED FILLETS: RADIUS 0.3 MAX							

Pending



MATERIAL:	
HARDNESS:	NA
COATING:	NA
WEIGHT:	53870 g
COMMENTS:	

UNSPECIFIED TOLERANCES:	
X	±0.2
X.X	±0.1
X.XX	±0.05
ANGLES	±0.5°
ALL DIMENSIONS ARE MILLIMETERS.	

CHICK 500 Keystone Drive
Warrendale, PA USA
(800) 33-CHICK • (724) 772-1644
www.chick-workholding.com

UNSPECIFIED EDGES: BREAK 0.3 TO 0.8
UNSPECIFIED FILLETS: RADIUS 0.3 MAX

ITEM:	WORK PKG - VMC		
TYPE:	FANUC ROBOTDRILL T-21iB PC2		
FAM:	FOUNDATION ONLY		
STYLE:	500 x 390		
TTK	3 OF 3	5VP-ROBO-00011	REV
10/31/2006			A1

Pending