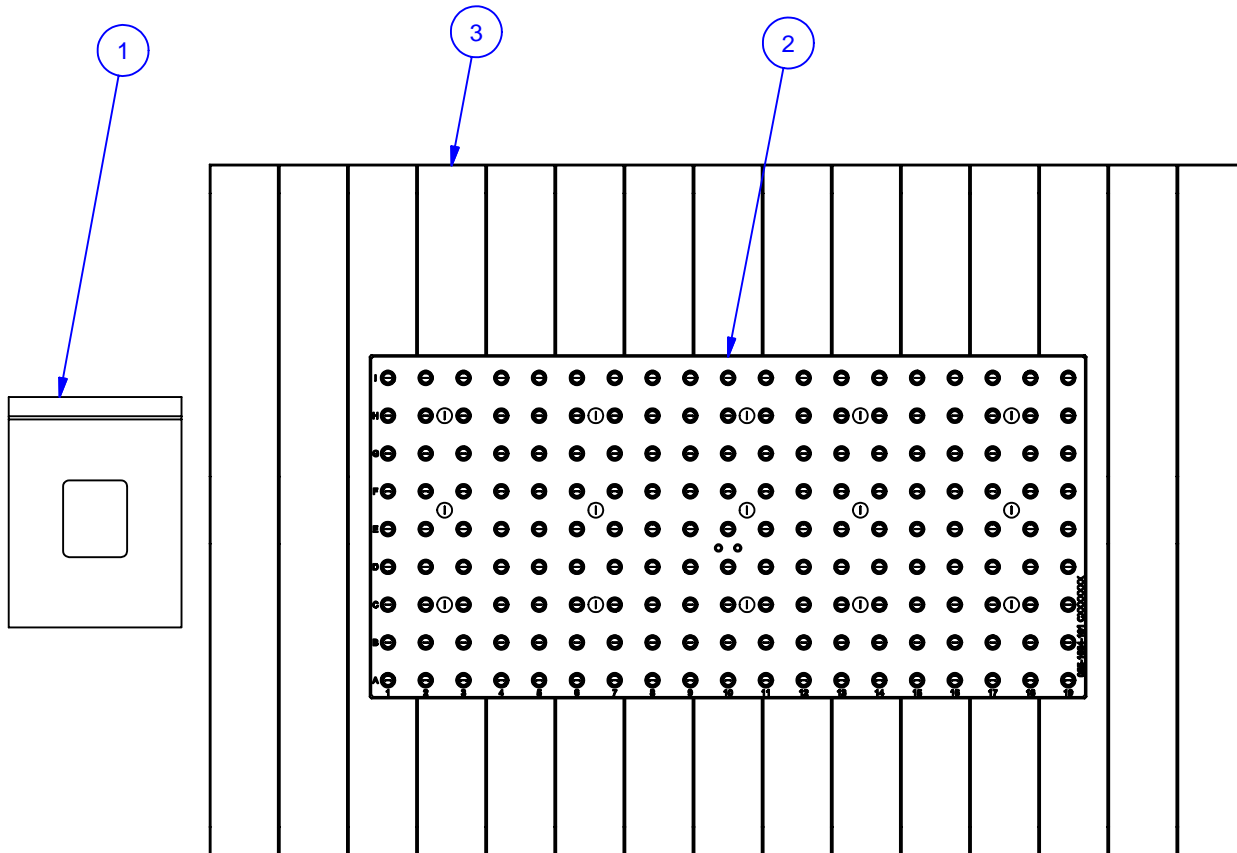

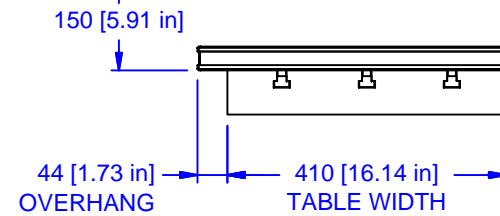
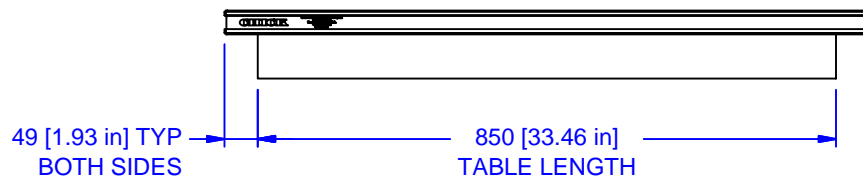
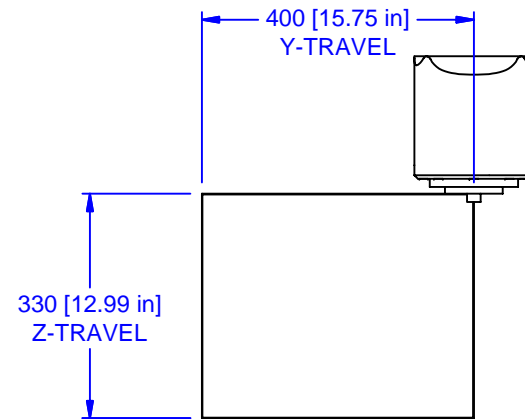
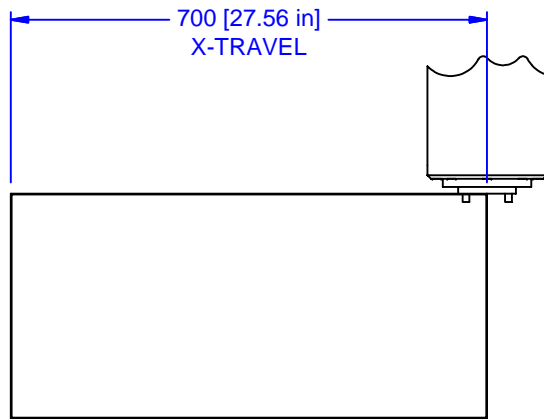
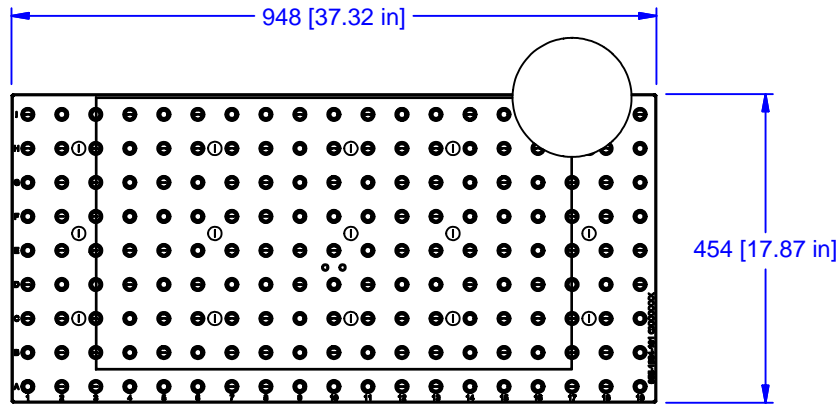


| PARTS LIST |     |             |                 |                      |                         |                    |
|------------|-----|-------------|-----------------|----------------------|-------------------------|--------------------|
| No         | QTY | PN          | ITEM            | TYPE                 | FAM                     | STYLE              |
| 1          | 1   | 050-2-10025 | KIT             | FOUNDATION MOUNTING  | 14mm T-SLOT             | (15) M12 X 35 SHCS |
| 2          | 1   | 055-1034-01 | FOUNDATION ASSY | WP STANDARD          | FANUC ROBODRILL T21-iEL | 948 X 454          |
| 3          | 1   | 990-50-002  | PACKAGING       | WOOD SHIPPING PALLET | 36" X 54"               | NA                 |



|                  |  |  |                              |                  |
|------------------|--|--|------------------------------|------------------|
| MATERIAL: NA     | UNSPECIFIED TOLERANCES:<br>X ±0.2<br>X.X ±0.1<br>X.XX ±0.05<br>ANGLES ±0.5°<br>ALL DIMENSIONS ARE MILLIMETERS. |  (800) 332-4425<br>(724) 772-1644<br><a href="http://www.ChickWorkholding.com">www.ChickWorkholding.com</a> | ITEM: WORK PKG - VMC         | REV              |
| HARDNESS: NA     |  |  | TYPE: FANUC ROBODRILL T21iEL |                  |
| COATING: NA      |  |  | FAM: FOUNDATION              | STYLE: 948 X 454 |
| WEIGHT: 127500 g |  |  | TTK                          | 1 OF 3           |
| COMMENTS:        |  |  | 10/13/2006                   |                  |

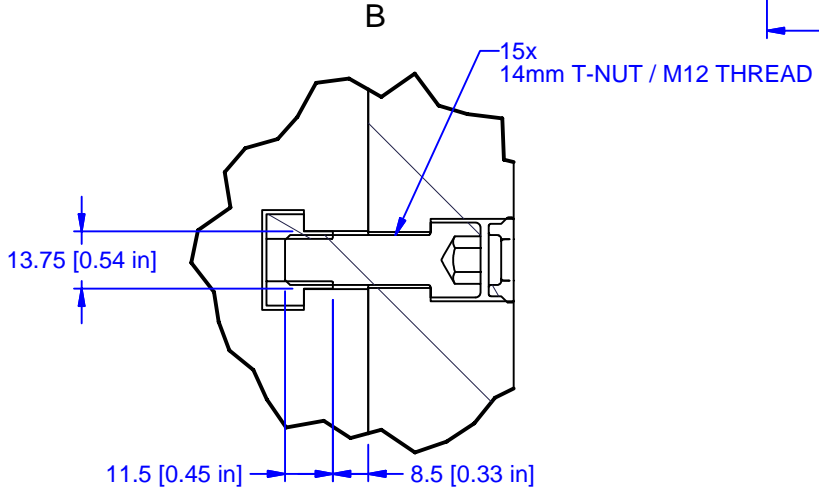
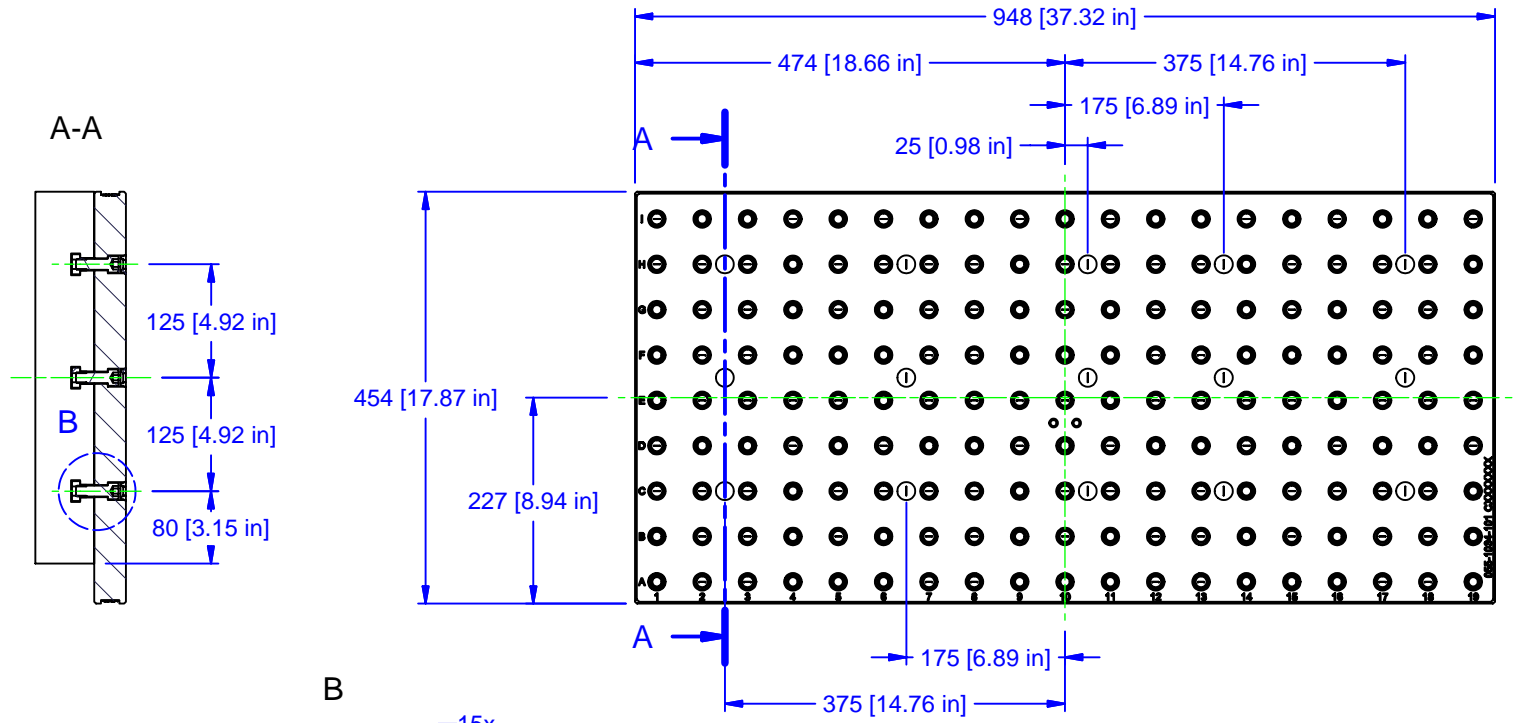


|           |          |
|-----------|----------|
| MATERIAL: | NA       |
| HARDNESS: | NA       |
| COATING:  | NA       |
| WEIGHT:   | 127500 g |
| COMMENTS: |          |

UNSPECIFIED TOLERANCES:  
 X ±0.2  
 X.X ±0.1  
 X.XX ±0.05  
 ANGLES ±0.5°  
 ALL DIMENSIONS ARE MILLIMETERS.

**CHICK** (800) 332-4425  
 (724) 772-1644  
[www.ChickWorkholding.com](http://www.ChickWorkholding.com)  
 UNSPECIFIED EDGES: BREAK 0.3 TO 0.8  
 UNSPECIFIED FILLETS: RADIUS 0.3 MAX

|            |                         |                |       |
|------------|-------------------------|----------------|-------|
| ITEM:      | WORK PKG - VMC          |                |       |
| TYPE:      | FANUC ROBOTDRILL T21iEL |                |       |
| FAM:       | FOUNDATION              |                |       |
| STYLE:     | 948 X 454               |                |       |
| TTK        | 2 OF 3                  | 5VP-ROBO-00032 | REV A |
| 10/13/2006 |                         |                |       |



|           |          |
|-----------|----------|
| MATERIAL: | NA       |
| HARDNESS: | NA       |
| COATING:  | NA       |
| WEIGHT:   | 127500 g |
| COMMENTS: |          |

UNSPECIFIED TOLERANCES:  
 X ±0.2  
 X.X ±0.1  
 X.XX ±0.05  
 ANGLES ±0.5°  
 ALL DIMENSIONS ARE MILLIMETERS.

**CHICK** (800) 332-4425  
 (724) 772-1644  
[www.ChickWorkholding.com](http://www.ChickWorkholding.com)

UNSPECIFIED EDGES: BREAK 0.3 TO 0.8  
 UNSPECIFIED FILLETS: RADIUS 0.3 MAX

|            |                         |                |       |
|------------|-------------------------|----------------|-------|
| ITEM:      | WORK PKG - VMC          |                |       |
| TYPE:      | FANUC ROBOTDRILL T21iEL |                |       |
| FAM:       | FOUNDATION              |                |       |
| STYLE:     | 948 X 454               |                |       |
| TTK        | 3 OF 3                  | SVP-ROBO-00032 | REV A |
| 10/13/2006 |                         |                |       |